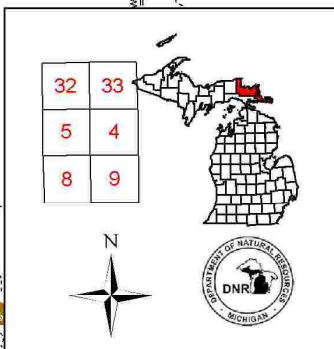


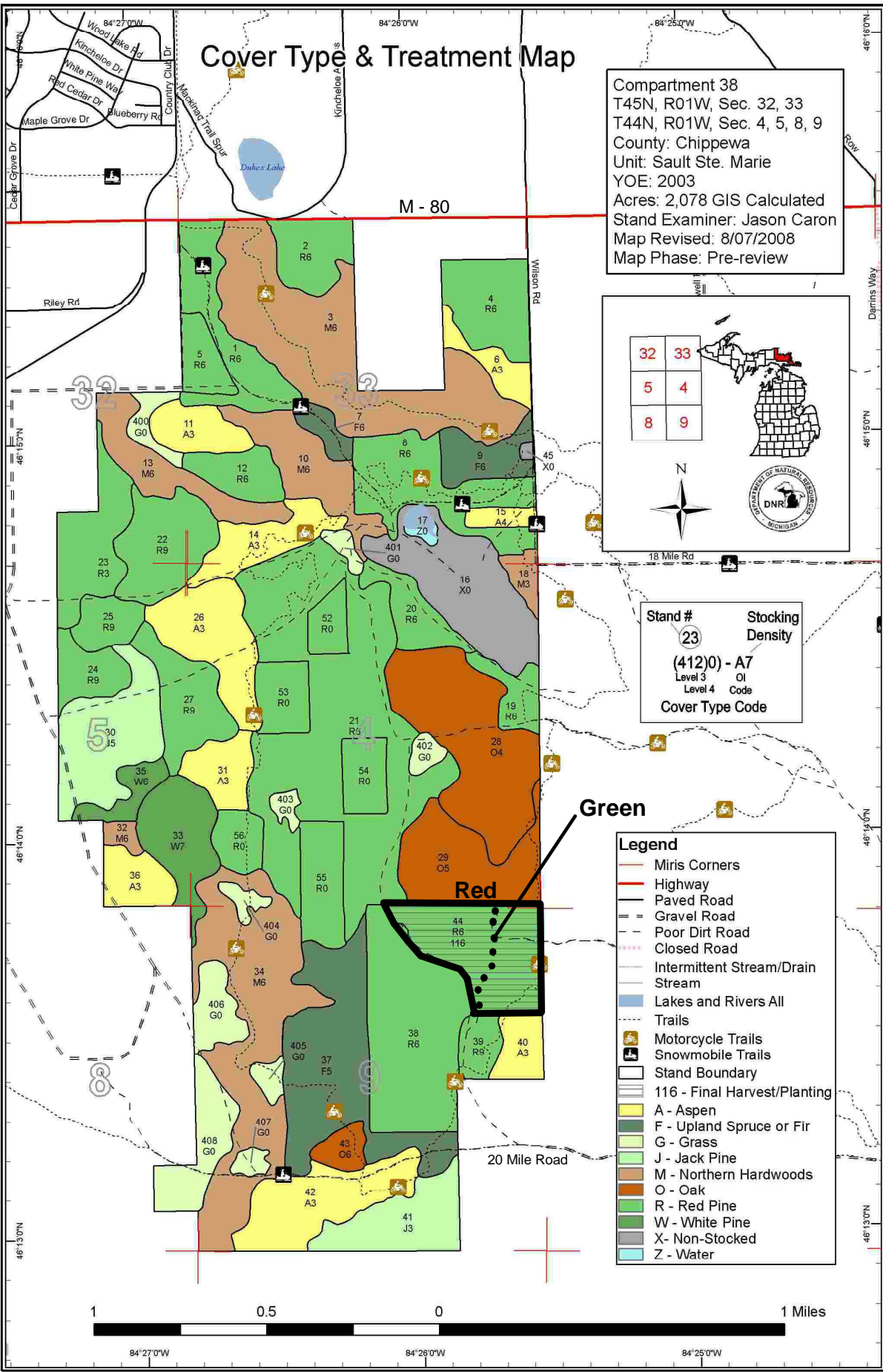
Cover Type & Treatment Map

Compartment 38
 T45N, R01W, Sec. 32, 33
 T44N, R01W, Sec. 4, 5, 8, 9
 County: Chippewa
 Unit: Sault Ste. Marie
 YOE: 2003
 Acres: 2,078 GIS Calculated
 Stand Examiner: Jason Caron
 Map Revised: 8/07/2008
 Map Phase: Pre-review



Stand # 23
 Stocking Density
 (412)0 - A7
 Level 3 OI
 Level 4 Code
 Cover Type Code

- Legend**
- Miris Corners
 - Highway
 - Paved Road
 - Gravel Road
 - Poor Dirt Road
 - Closed Road
 - Intermittent Stream/Drain
 - Stream
 - Lakes and Rivers All
 - Trails
 - Motorcycle Trails
 - Snowmobile Trails
 - Stand Boundary
 - 116 - Final Harvest/Planting
 - A - Aspen
 - F - Upland Spruce or Fir
 - G - Grass
 - J - Jack Pine
 - M - Northern Hardwoods
 - O - Oak
 - R - Red Pine
 - W - White Pine
 - X - Non-Stocked
 - Z - Water



Red

Green