



### TIMBER SALE MAP

This information provided by authority of Part 525 of Act 451, PA 1994, as amended.

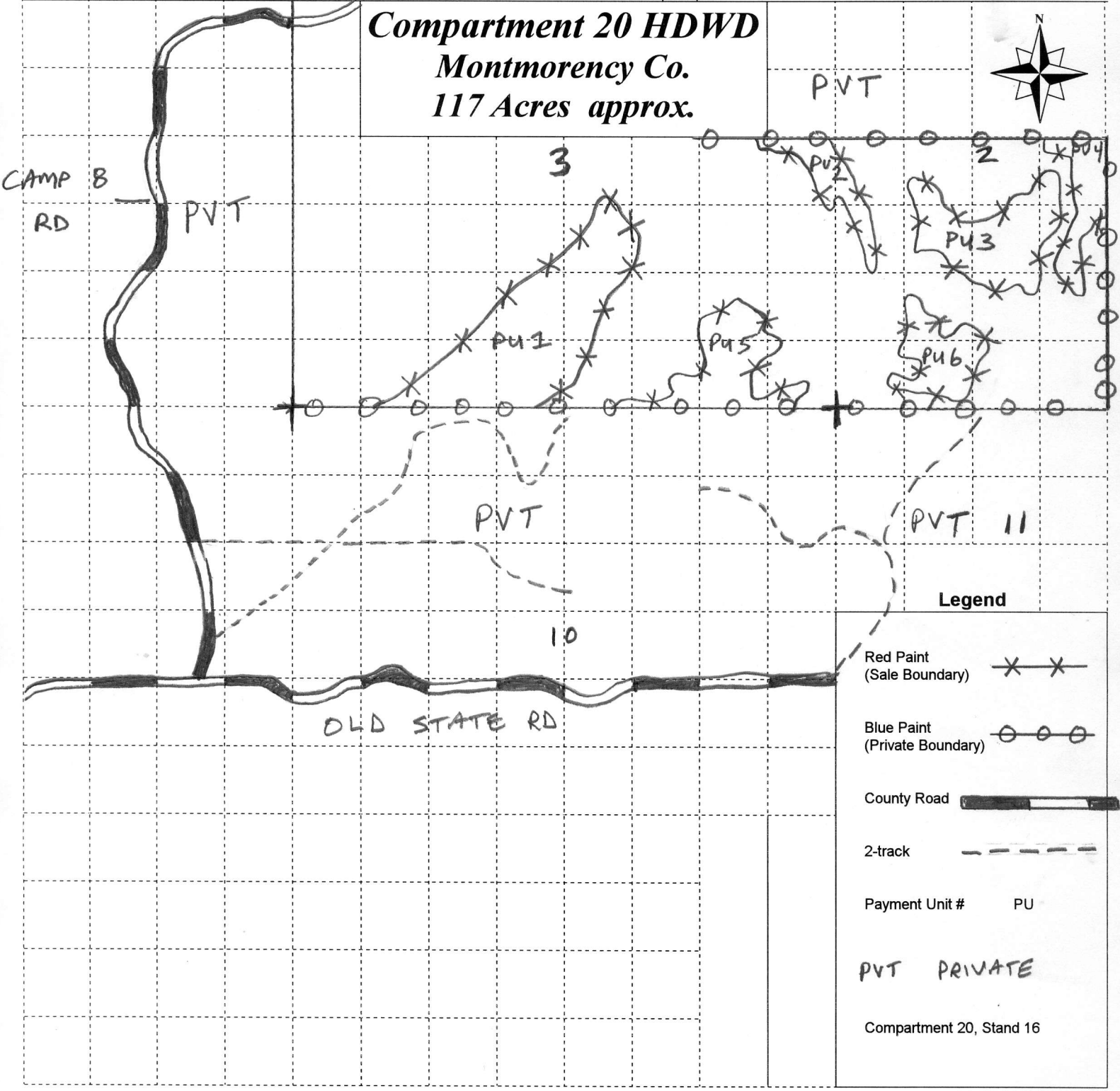
Sale Number	Year
	2009

Forest Management Unit Atlanta	County Montmorency	Mapped By Major	Date 11/13/2009	Page 1	of 1
Township 30N	Range R1E	Section(s) and Subdivision(s) Section 2: SW4 Section 3: S2	Cruised By		
			Scale:  ... 4 inch.....  = 1 mile		

Cover Type			
A = Aspen	H = Hemlock	P = Lowland Poplar	V = Bog or Marsh
B = Paper Birch	J = Jack Pine	Q = Mixed Swamp Cnfr	W = White Pine
C = Cedar	L = Lowland Brush	R = Red Pine	X = Non Stocked
E = Swamp Hdwoods	M = Mpl, Bch, Brch	S = Black Spruce	Z = Water
F = Spruce Fir	N = Marsh	T = Tamarack	
G = Grass	O = Oak	U = Upland Brush	

Density	
0 = Non Stocked	5 = Pole Timber Medium
1 = Seedling Sapling Poor	6 = Pole Timber Well
2 = Seedling Sapling Medium	7 = Saw Timber Poor
3 = Seedling Sapling Well	8 = Saw Timber Medium
4 = Pole Timber Poor	9 = Saw Timber Well

**Compartment 20 HDWD**  
**Montmorency Co.**  
**117 Acres approx.**

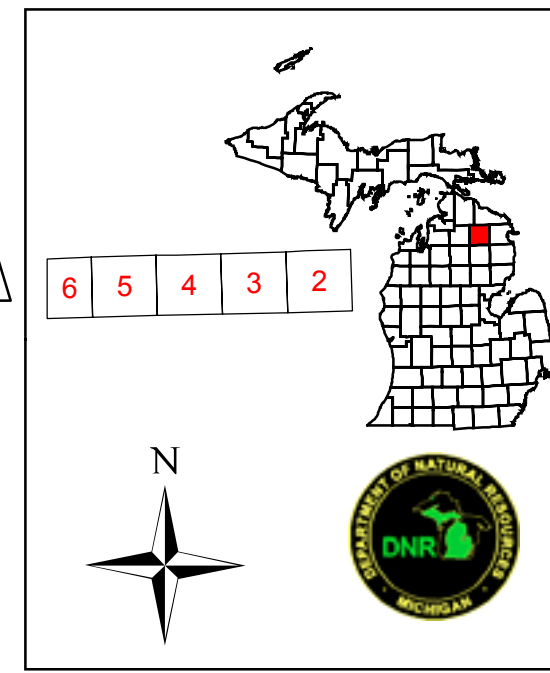


**Legend**

- Red Paint (Sale Boundary)
- Blue Paint (Private Boundary)
- County Road
- 2-track
- Payment Unit # PU
- PVT PRIVATE
- Compartment 20, Stand 16

# Field Map

Compartment 20  
T30N, R01E, Sec. 2-6  
County: Mountmorency  
Unit: Atlanta  
YOE: 2009  
Acres: 976 GIS Calculated  
Stand Examiner: Richard Barber  
Map Revised: 2/29/2008  
Map Phase: Post Review



### Legend

- Miris Corners
- Paved Road
- Intermittent Stream/Drain
- Stream
- Stands
- Single Tree Selection

#### Forest Stands

Level 3

- 411 - Northern Hardwood
- 412 - Oak Types
- 413 - Aspen Types
- 419 - Mixed Upland Deciduous
- 423 - Other Upland Conifers
- 612 - Lowland Coniferous Forest

#### Non-Forest Stands

Level 3

- 122 - Road/Parking Lot
- 310 - Herbaceous Openland
- 622 - Lowland Shrub
- 623 - Emergent Wetland

