



Michigan Department of Natural Resources – Forest, Mineral & Fire Management
TIMBER SALE MAP

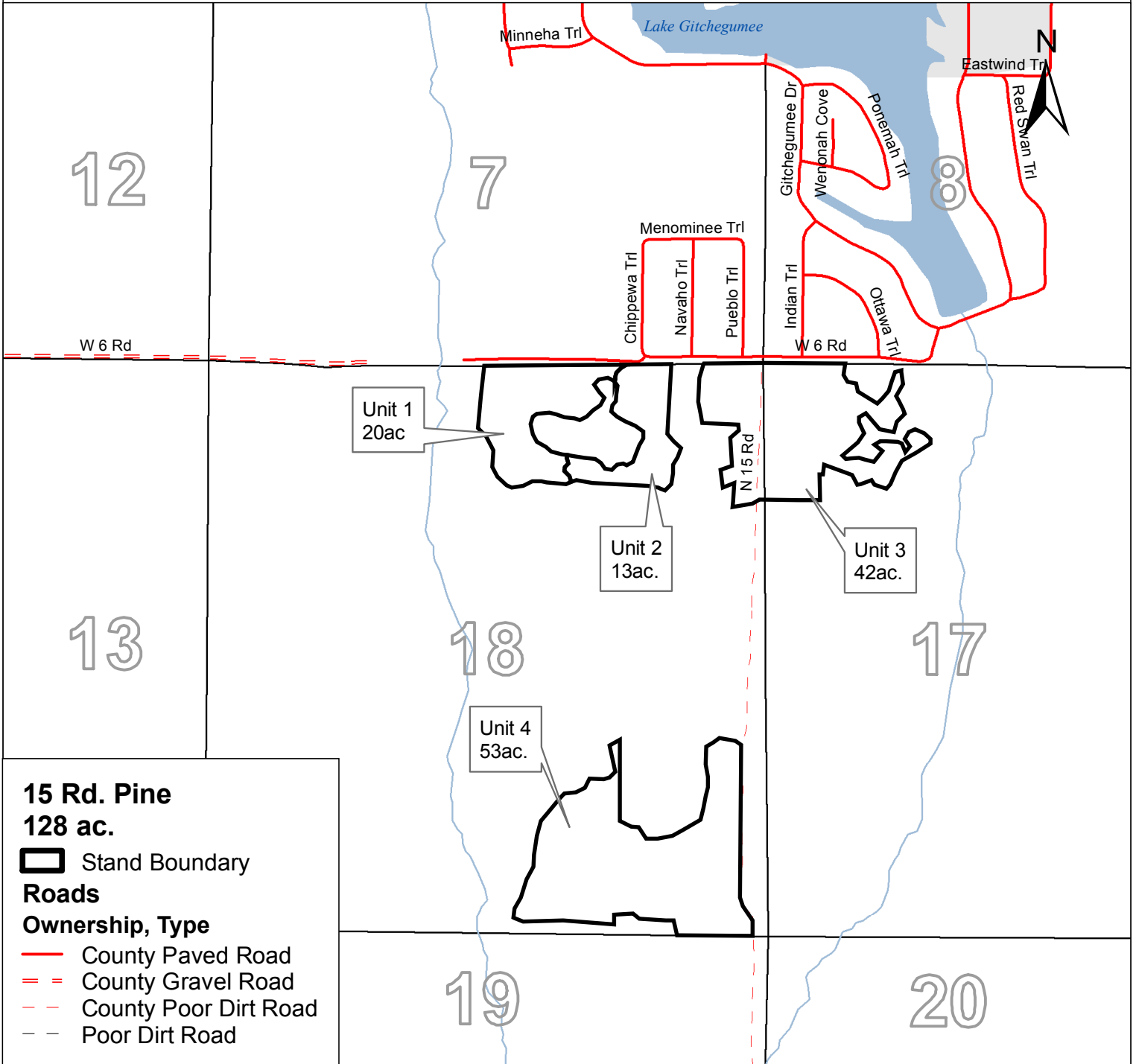
This information is provided by authority of Part 525 of Act 451, PA 1994, as amended.

| | |
|--------------|---------|
| SALE NUMBER | YEAR |
| 63-003-09-01 | 2009 |
| DATE | PAGE OF |
| 8/27/2009 | 1 1 |

| | | |
|--|-------------------|--------------------------|
| FOREST MANAGEMENT UNIT Cadillac FMU | COUNTY Wexford | MAPPED BY Jim Malloy |
| | | CRUISED BY Jim Malloy |

| | | | |
|-----------------|--------------|---|-------------------|
| TOWNSHIP 24N | RANGE 11W | SECTION(S) AND SUBDIVISION(S) Sect 18 N 1/2 NE, SE & Section 17 NWNW | Scale 1:15,840 |
|-----------------|--------------|---|-------------------|

| Cover Type | | | | Density | |
|-------------------|--------------------|----------------------|------------------|-----------------------------|------------------------|
| A = Aspen | H = Hemlock | P = Lowland Poplar | V = Bog or Marsh | 0 = Non Stocked | 5 = Pole Timber Medium |
| B = Paper Birch | J = Jack Pine | Q = Mixed Swamp Cnfr | W = White Pine | 1 = Seedling Sapling Poor | 6 = Pole Timber Well |
| C = Cedar | L = Lowland Brush | R = Red Pine | X = Non Stocked | 2 = Seedling Sapling Medium | 7 = Saw Timber Poor |
| E = Swamp Hdwoods | M = Mpl, Bch, Brch | S = Black Spruce | Z = Water | 3 = Seedling Sapling Well | 8 = Saw Timber Medium |
| F = Spruce Fir | N = Marsh | T = Tamarack | | 4 = Pole Timber Poor | 9 = Saw Timber Well |
| G = Grass | O = Oak | U = Upland Brush | | | |



15 Rd. Pine
128 ac.

Stand Boundary

Roads

Ownership, Type

- County Paved Road
- County Gravel Road
- County Poor Dirt Road
- Poor Dirt Road

