



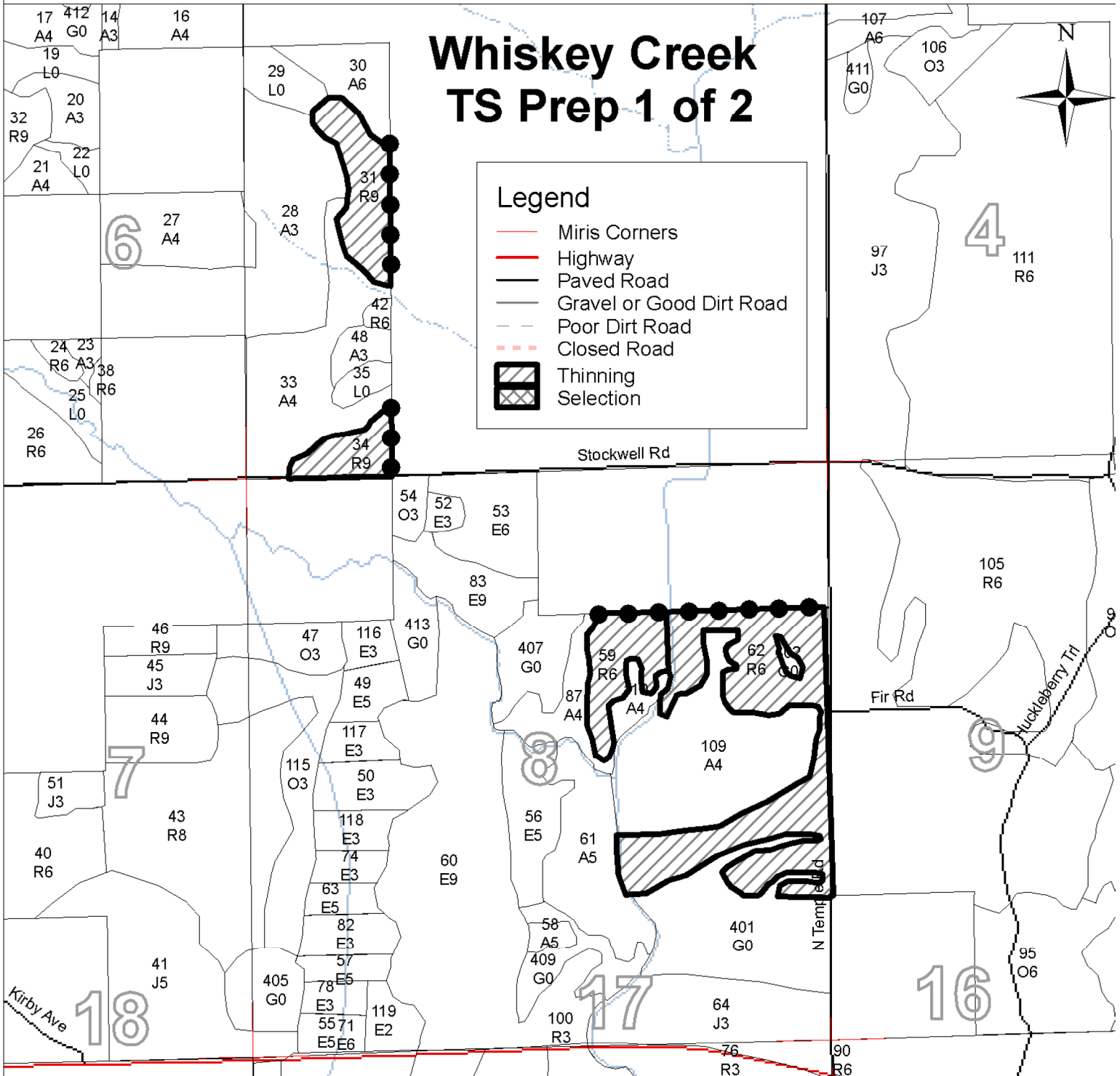
FOREST MANAGEMENT UNIT Gladwin		COUNTY Clare	MAPPED BY Throop CRUISED BY ---	DATE 11/10/09
TOWNSHIP T19N	RANGE R06W	SECTION(S) AND SUBDIVISION(S) 5, 8, 17		1:15,840

Cover Type				Density	
A = Aspen	H = Hemlock	P = Lowland Poplar	V = Bog or Marsh	0 = Non Stocked	5 = Pole Timber Medium
B = Paper Birch	J = Jack Pine	Q = Mixed Swamp Cntr	W = White Pine	1 = Seedling Sapling Poor	6 = Pole Timber Well
C = Cedar	L = Lowland Brush	R = Red Pine	X = Non Stocked	2 = Seedling Sapling Medium	7 = Saw Timber Poor
E = Swamp Hdwoods	M = Mpl, Bch, Brch	S = Black Spruce	Z = Water	3 = Seedling Sapling Well	8 = Saw Timber Medium
F = Spruce Fir	N = Marsh	T = Tamarack		4 = Pole Timber Poor	9 = Saw Timber Well
G = Grass	O = Oak	U = Upland Brush			

Whiskey Creek TS Prep 1 of 2

Legend

- Miris Corners
- Highway
- Paved Road
- Gravel or Good Dirt Road
- Poor Dirt Road
- Closed Road
- Thinning Selection



0.5 0.25 0 Miles





Michigan Department of Natural Resources - Forest, Mineral & Fire Management
TIMBER SALE MAP

This information is provided by authority of Part 525 of Act 451, PA 1994, as amended.

SALE NUMBER	YEAR
005	2010

FOREST MANAGEMENT UNIT Gladwin		COUNTY Clare	MAPPED BY Throop	DATE 11/10/09
		CRUISED BY ---		
TOWNSHIP T19N	RANGE R06W	SECTION(S) AND SUBDIVISION(S) 5, 8, 17		1:15,840

Cover Type				Density	
A = Aspen	H = Hemlock	P = Lowland Poplar	V = Bog or Marsh	0 = Non Stocked	5 = Pole Timber Medium
B = Paper Birch	J = Jack Pine	Q = Mixed Swamp Cnfr	W = White Pine	1 = Seedling Sapling Poor	6 = Pole Timber Well
C = Cedar	L = Lowland Brush	R = Red Pine	X = Non Stocked	2 = Seedling Sapling Medium	7 = Saw Timber Poor
E = Swamp Hdwoods	M = Mpl, Bch, Brch	S = Black Spruce	Z = Water	3 = Seedling Sapling Well	8 = Saw Timber Medium
F = Spruce Fir	N = Marsh	T = Tamarack		4 = Pole Timber Poor	9 = Saw Timber Well
G = Grass	O = Oak	U = Upland Brush			

