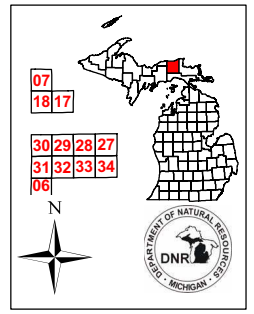


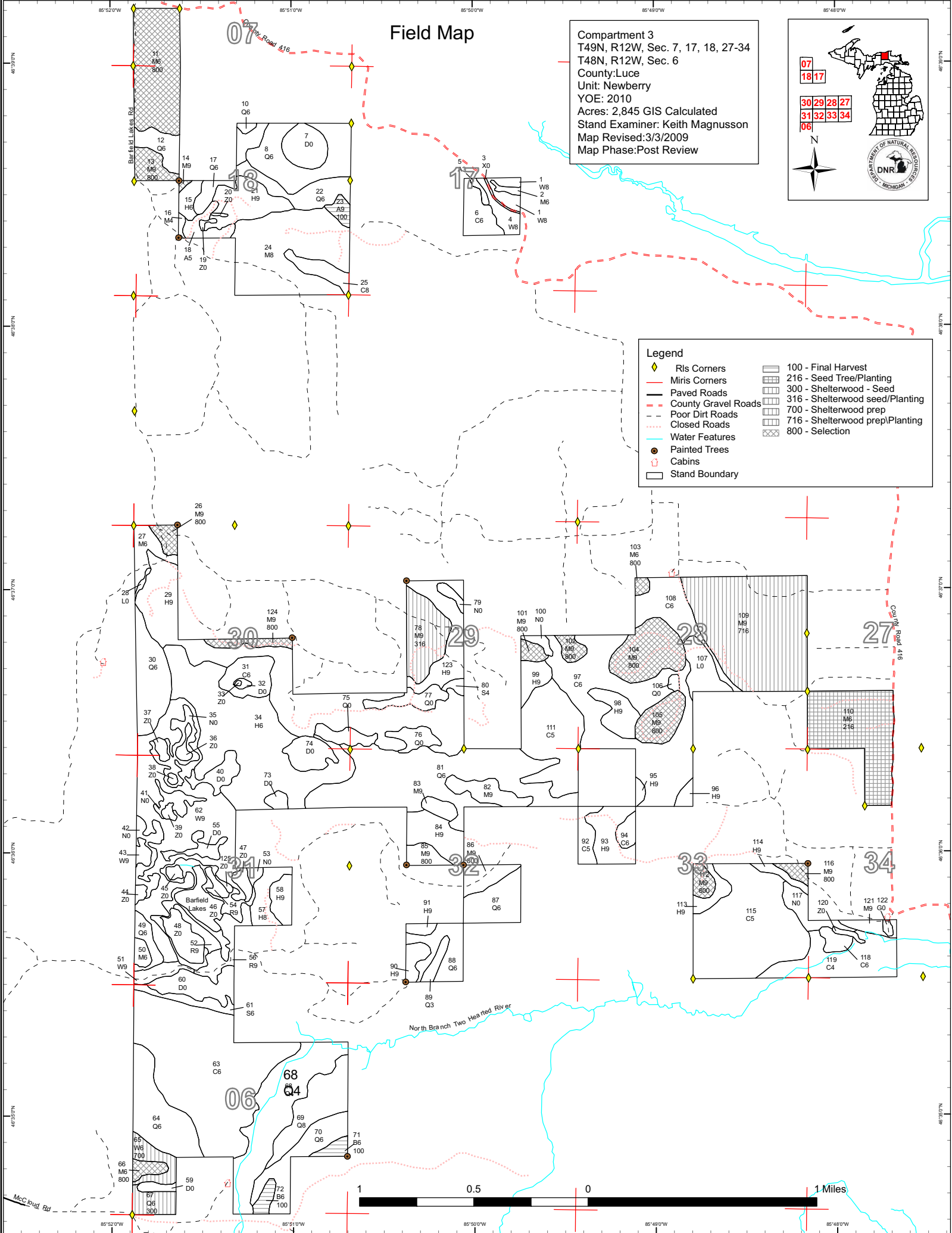
Field Map

Compartment 3
 T49N, R12W, Sec. 7, 17, 18, 27-34
 T48N, R12W, Sec. 6
 County: Luce
 Unit: Newberry
 YOE: 2010
 Acres: 2,845 GIS Calculated
 Stand Examiner: Keith Magnusson
 Map Revised: 3/3/2009
 Map Phase: Post Review



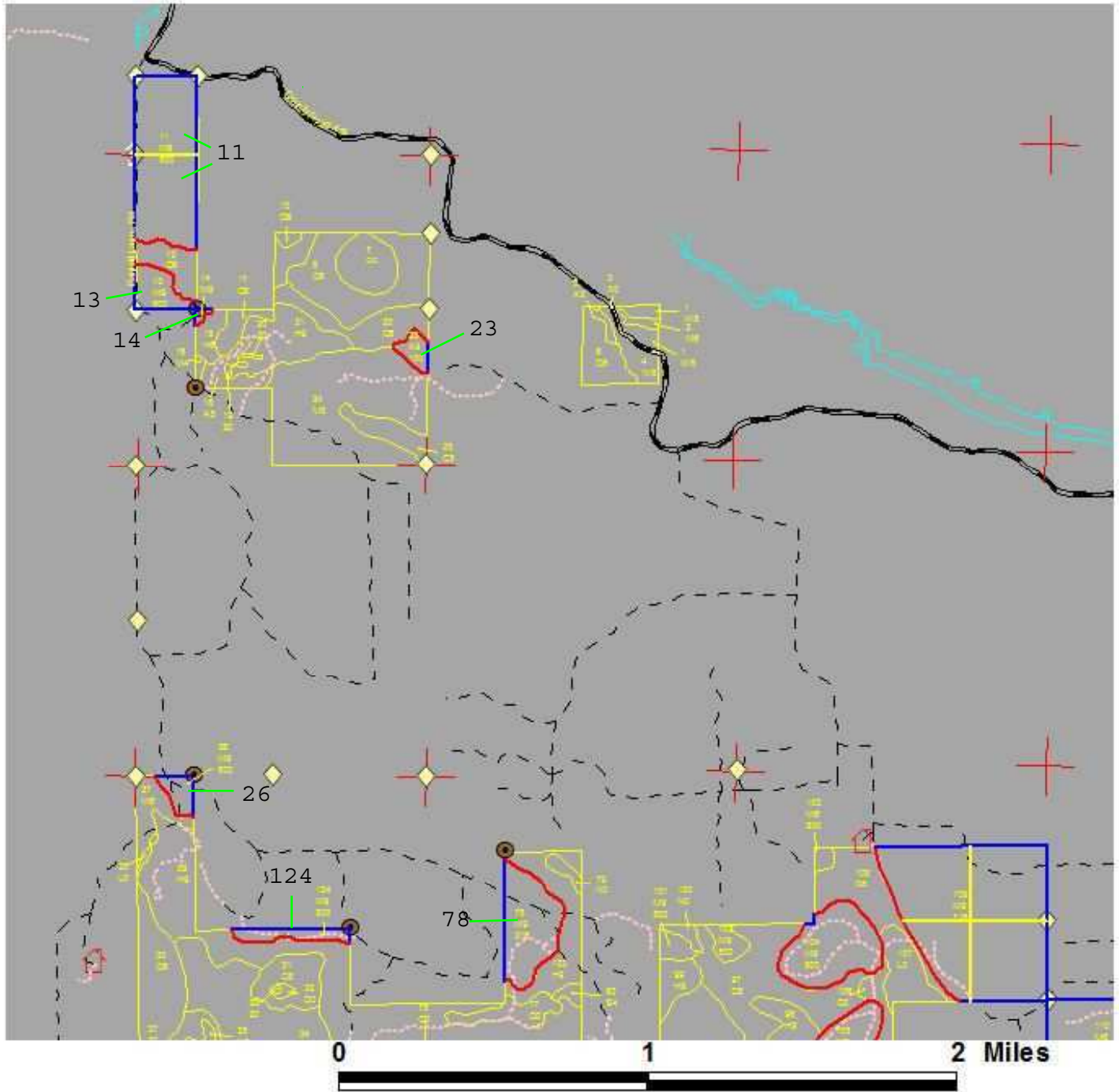
Legend

◆ Ris Corners	▨ 100 - Final Harvest
— Miris Corners	▩ 216 - Seed Tree/Planting
— Paved Roads	▨ 300 - Shelterwood - Seed
— County Gravel Roads	▨ 316 - Shelterwood seed/Planting
— Poor Dirt Roads	▨ 700 - Shelterwood prep
— Closed Roads	▨ 716 - Shelterwood prep/Planting
— Water Features	▨ 800 - Selection
● Painted Trees	
⌘ Cabins	
□ Stand Boundary	

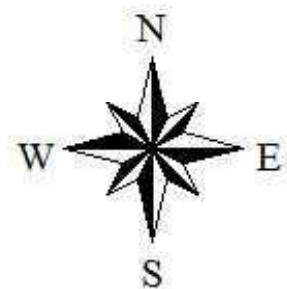


Contractor Line Work

Compartment 3 Stands 11, 13, 14, 23, 26, 78 & 124

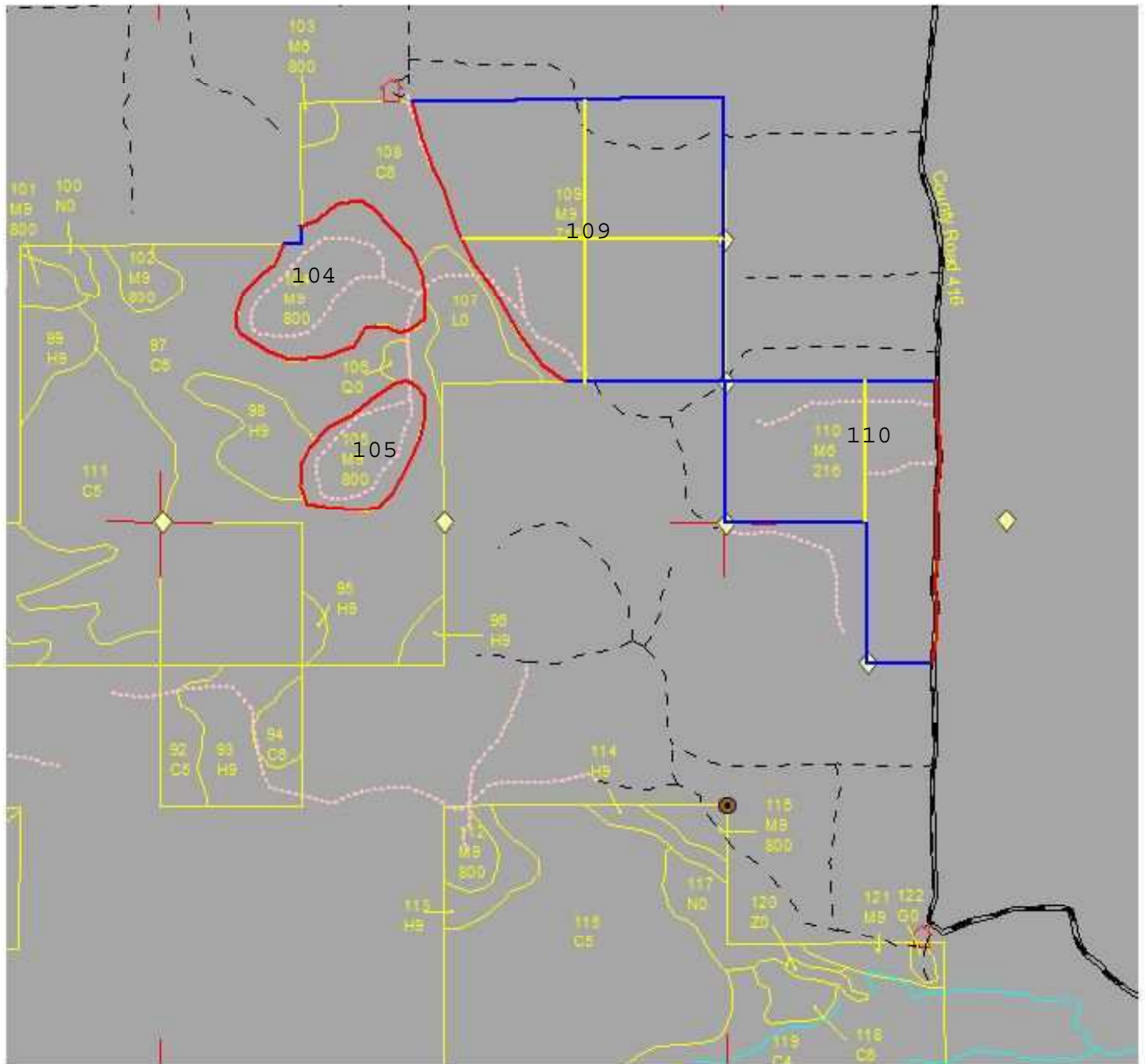


- Contractor line work.shp
 - Red Line
 - Blue Line
 - Yellow Line
- Wooden PostsSuvery corner location painted tree.shp
- RLS Corner-DNRSurvey_corner.shp
- Miris CornerNew003_miris_corners.shp
- New003_doq_roads.shp
 - Paved
 - Gravel
 - Poor Dirt
- New003_field_roads.shp
 - Closed
 - Poor Dirt
- New003_water_features.shp
- CabinsCabin.shp
- New003_stand_boun.shp



Contractor Line Work

Compartment 3 Stands 104, 105, 109, 110



- Contractor line work.shp
 - Red Line
 - Blue Line
 - Yellow Line
- Wooden PostsSuvery corner location painted tree.shp
- ◇ RLS Corner-DNR Survey_corner.shp
- Miris CornerNew003_miris_corners.shp
- New003_dog_roads.shp
 - Paved
 - Gravel
 - Poor Dirt
- New003_field_roads.shp
 - Closed
 - Poor Dirt
- New003_water_features.shp
- 🏠 CabinsCabin.shp
- New003_stand_boun.shp

