

Compartment 105
 T31N, R07E, Sec. 34, 35, 36
 County: Alpena
 Unit: Atlanta
 YOE: 2011
 Acres: 1,813 GIS Calculated
 Stand Examiner: Richard Barber
 Map Revised: 11/06/2009
 Map Phase: Post-Review

Stand #
23
 (4120) - A7
 Level 3 OI
 Level 4 Code
 Cover Type Code

Legend

- Miris Corners
- Highways
- Paved Road
- Poor Dirt Road
- Closed Road
- Intermittent Stream/Drain
- Stream
- Trails
- 🛷 Snowmobile Trails
- 🛷 Ski Trails
- 🚲 Bike Trails
- 🚶 Hiking Trails
- State Highway
- 🌊 Lakes and Rivers
- ▭ Clearcut (w/Reserves, Patch/Strip)
- ▨ Seed Tree (w/Reserves)
- ▩ Thinning (Crown, Low, Systematic)
- Mowing

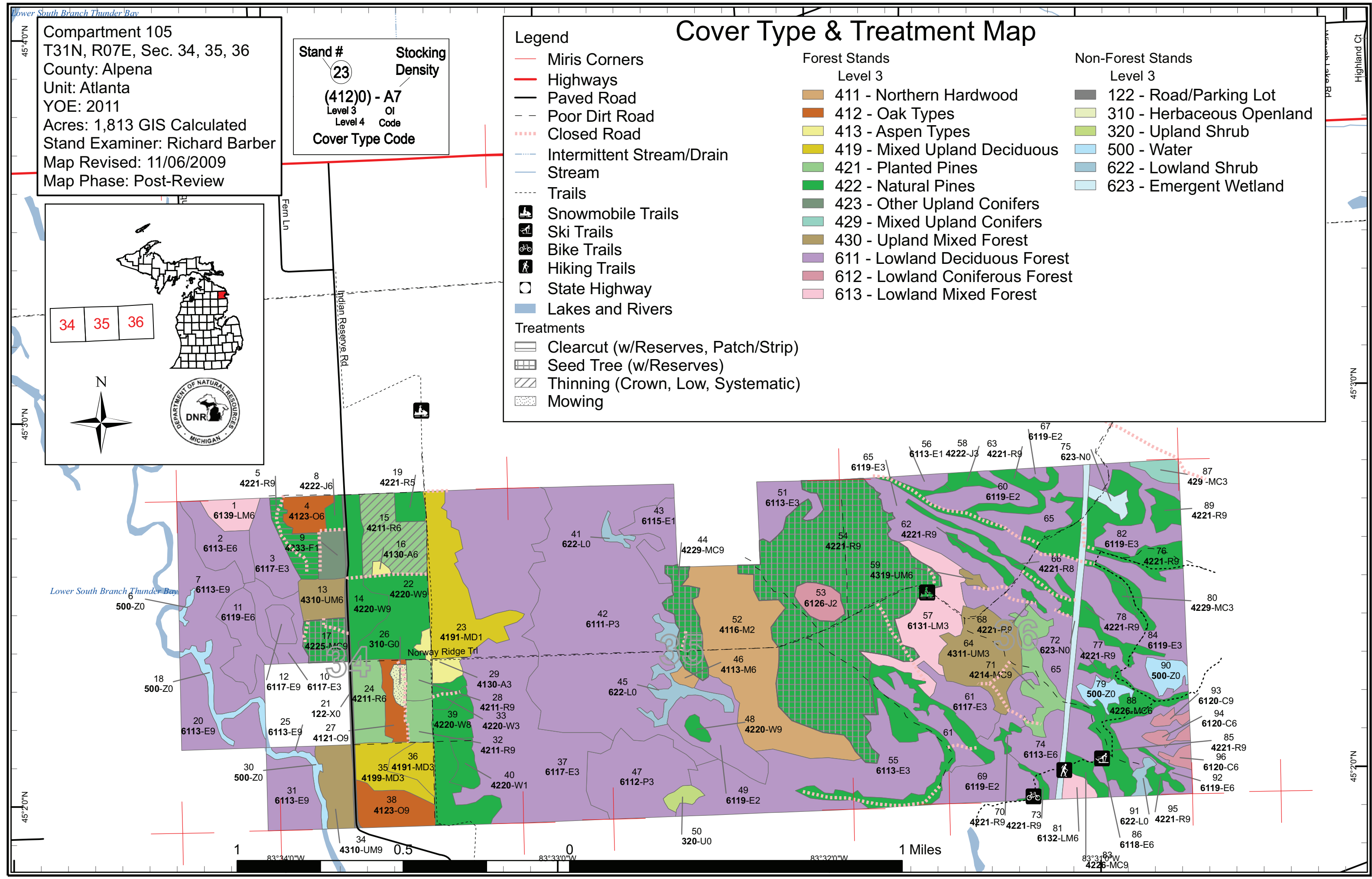
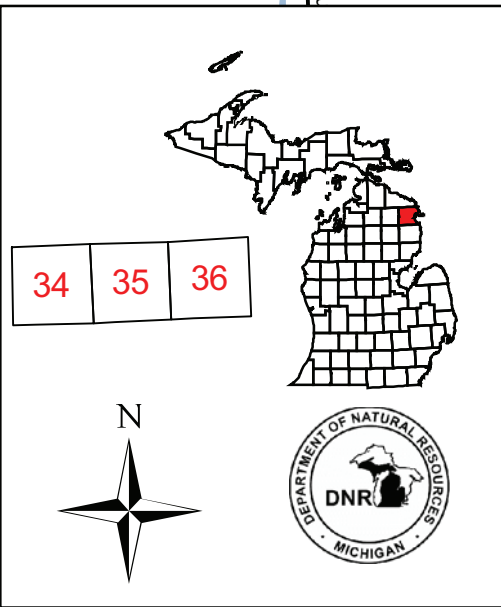
Cover Type & Treatment Map

Forest Stands

- Level 3
- 411 - Northern Hardwood
 - 412 - Oak Types
 - 413 - Aspen Types
 - 419 - Mixed Upland Deciduous
 - 421 - Planted Pines
 - 422 - Natural Pines
 - 423 - Other Upland Conifers
 - 429 - Mixed Upland Conifers
 - 430 - Upland Mixed Forest
 - 611 - Lowland Deciduous Forest
 - 612 - Lowland Coniferous Forest
 - 613 - Lowland Mixed Forest

Non-Forest Stands

- Level 3
- 122 - Road/Parking Lot
 - 310 - Herbaceous Openland
 - 320 - Upland Shrub
 - 500 - Water
 - 622 - Lowland Shrub
 - 623 - Emergent Wetland



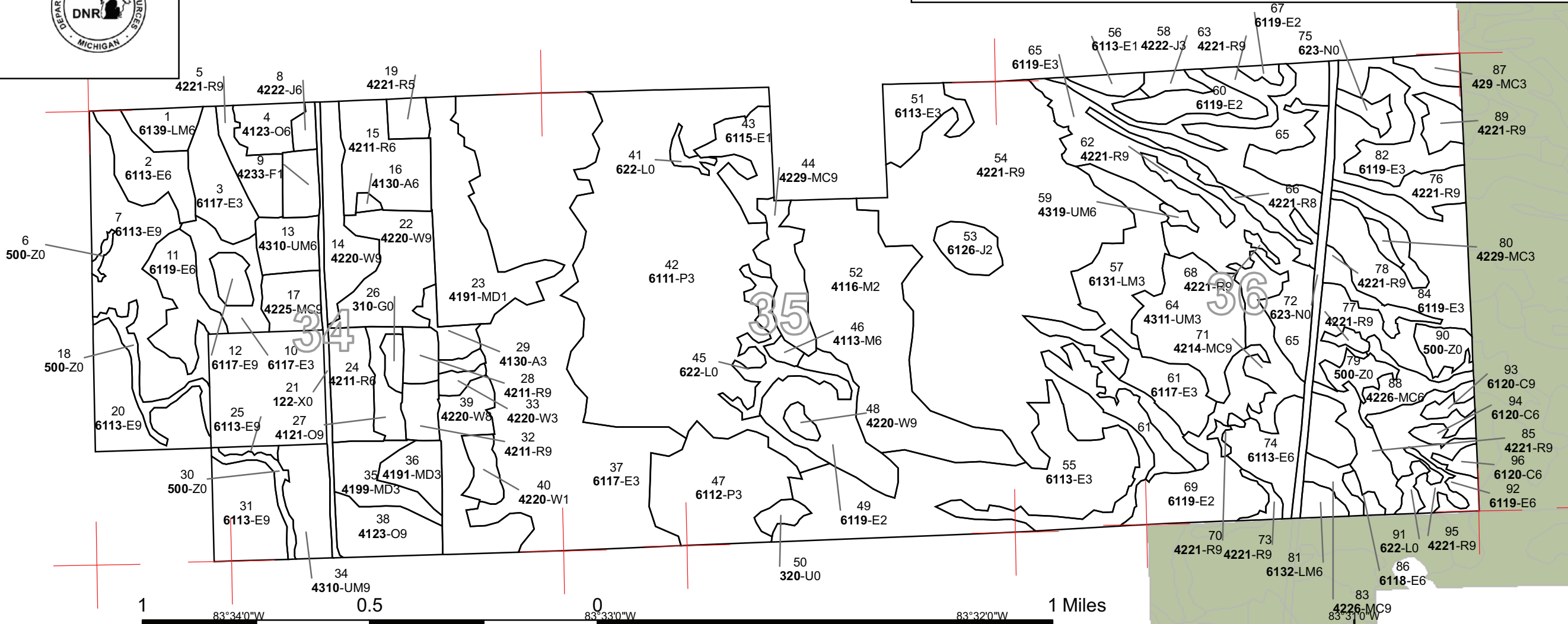
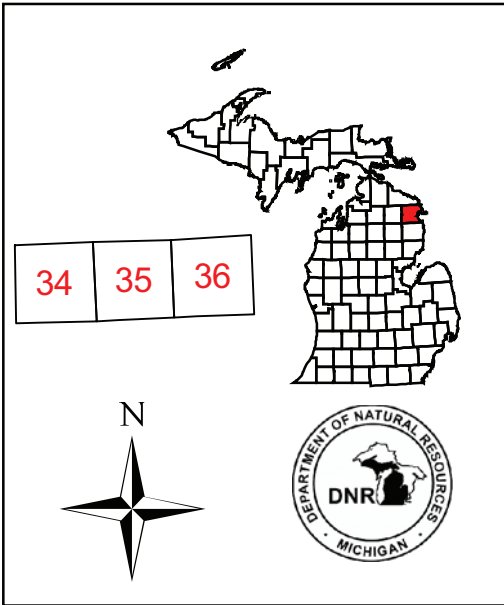
Dedicated & Proposed Special Conservation Area Map

Compartment 105
 T31N, R07E, Sec. 34, 35, 36
 County: Alpena
 Unit: Atlanta
 YOE: 2011
 Acres: 1,813 GIS Calculated
 Stand Examiner: Richard Barber
 Map Revised: 11/06/2009
 Map Phase: Post-Review

Stand # **23**
 Stacking Density
(4120) - A7
 Level 3 OI
 Level 4 Code
 Cover Type Code

Legend

- Miris Corners
- Stand Boundaries
- Dedicated Special Conservation Areas
- OI Special Conservation Areas
- Forest Stands
 - Level 3
 - 411 - Northern Hardwood
 - 412 - Oak Types
 - 413 - Aspen Types
 - 419 - Mixed Upland Deciduous
 - 421 - Planted Pines
 - 422 - Natural Pines
 - 423 - Other Upland Conifers
 - 429 - Mixed Upland Conifers
 - 430 - Upland Mixed Forest
 - 611 - Lowland Deciduous Forest
 - 612 - Lowland Coniferous Forest
 - 613 - Lowland Mixed Forest
- Non-Forest Stands
 - Level 3
 - 122 - Road/Parking Lot
 - 310 - Herbaceous Openland
 - 320 - Upland Shrub
 - 500 - Water
 - 622 - Lowland Shrub
 - 623 - Emergent Wetland



45°40'N
45°30'N
45°20'N
45°10'N

83°31'0"W

83°35'0"W 83°34'0"W 83°33'0"W 83°32'0"W

45°30'N

45°20'N