



Michigan Department of Natural Resources – Forest, Mineral & Fire Management  
**TIMBER SALE MAP**

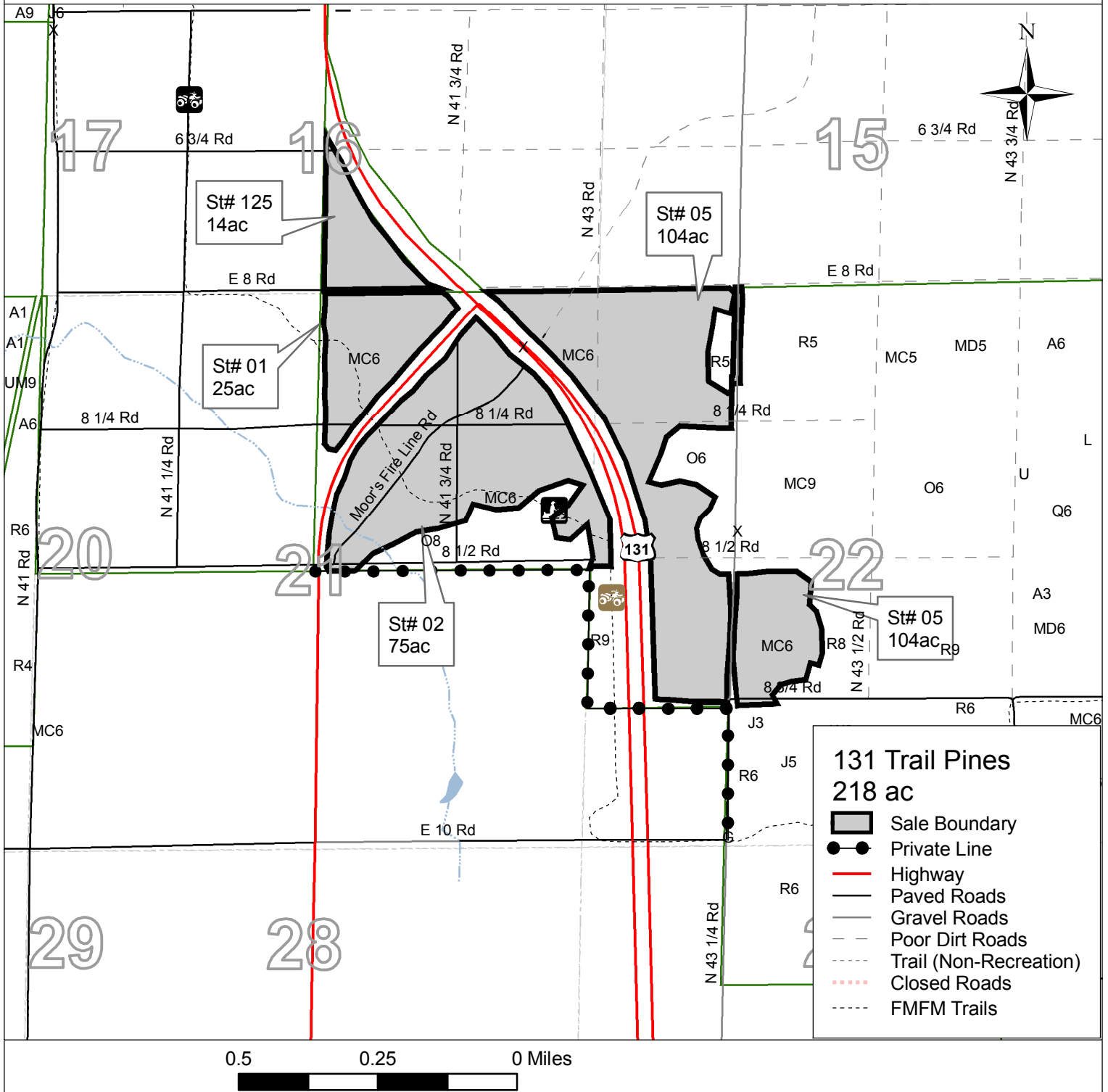
This information is provided by authority of Part 525 of Act 451, PA 1994, as amended.

SALE NUMBER	YEAR
63-002-10-01	2011
DATE	PAGE OF
10/08/10	1 1

FOREST MANAGEMENT UNIT <b>Cadillac</b>	COUNTY <b>Wexford</b>	MAPPED BY Jim Malloy
		CRUISED BY

TOWNSHIP <b>24N</b>	RANGE <b>09W</b>	SECTION(S) AND SUBDIVISION(S) Sec 16 SWSE, Sec 21 NE, Sec 22 W1/2 NW N1/2 SW	Scale <b>1:15,840</b>
------------------------	---------------------	---	--------------------------

Cover Type				Density	
A = Aspen	H = Hemlock	P = Lowland Poplar	V = Bog or Marsh	0 = Non Stocked	5 = Pole Timber Medium
B = Paper Birch	J = Jack Pine	Q = Mixed Swamp Cnfr	W = White Pine	1 = Seedling Sapling Poor	6 = Pole Timber Well
C = Cedar	L = Lowland Brush	R = Red Pine	X = Non Stocked	2 = Seedling Sapling Medium	7 = Saw Timber Poor
E = Swamp Hdwoods	M = Mpl, Bch, Brch	S = Black Spruce	Z = Water	3 = Seedling Sapling Well	8 = Saw Timber Medium
F = Spruce Fir	N = Marsh	T = Tamarack		4 = Pole Timber Poor	9 = Saw Timber Well
G = Grass	O = Oak	U = Upland Brush			



**131 Trail Pines  
218 ac**

- Sale Boundary
- Private Line
- Highway
- Paved Roads
- Gravel Roads
- Poor Dirt Roads
- Trail (Non-Recreation)
- Closed Roads
- FMFM Trails