



Michigan Department of Natural Resources – Forest, Mineral & Fire Management
TIMBER SALE MAP

This information is provided by authority of Part 525 of Act 451, PA 1994, as amended.

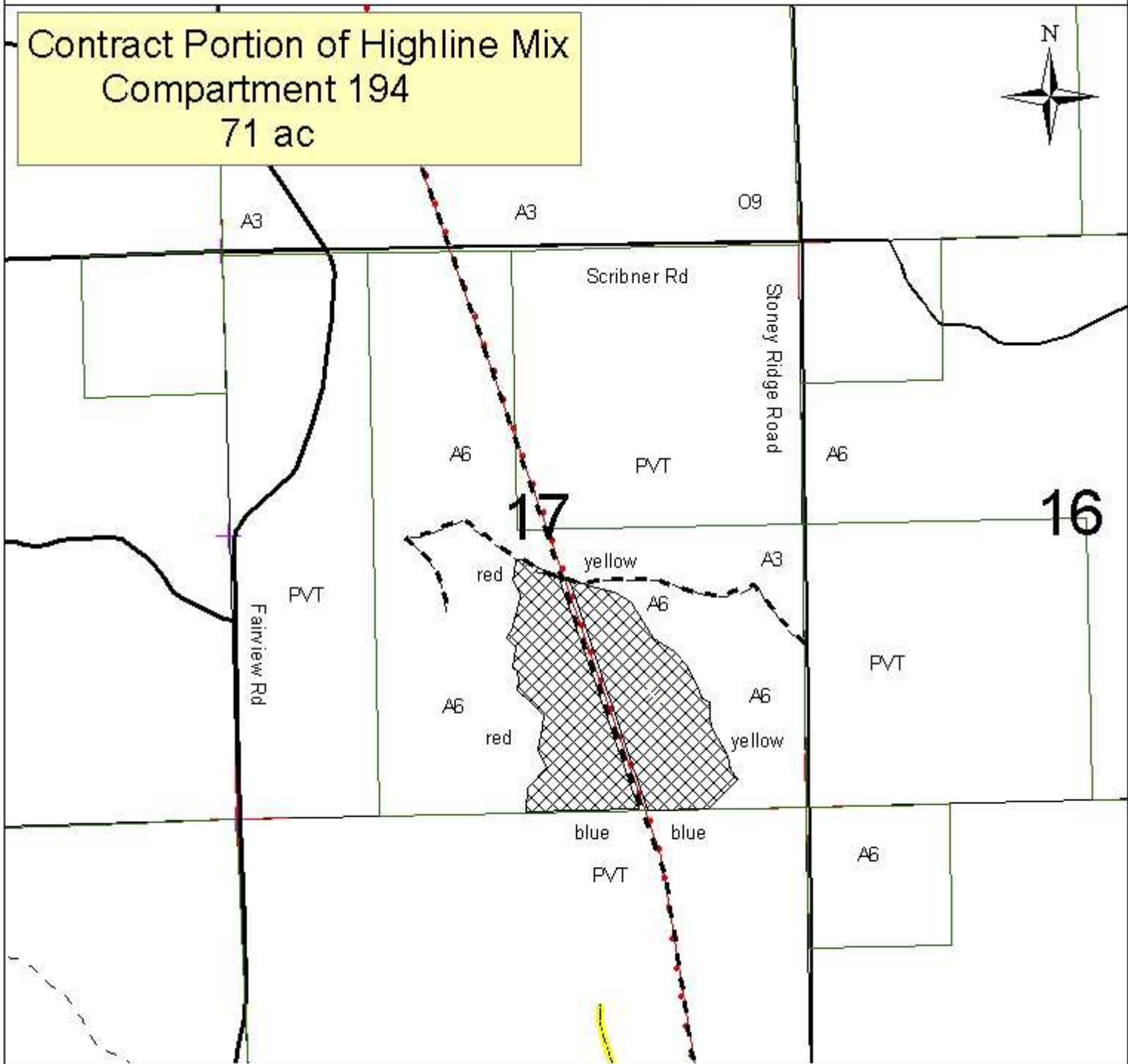
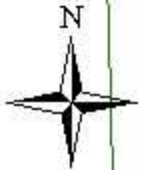
SALE NUMBER	YEAR
3	2011
DATE	PAGE OF
7/08/2010	1 1

FOREST MANAGEMENT UNIT Roscommon	COUNTY Ogemaw	MAPPED BY Jason Hartman CRUISED BY Jason Hartman
-------------------------------------	------------------	---

TOWNSHIP T23N	RANGE R2E	SECTION(S) AND SUBDIVISION(S) 17 SE	1:15,840
------------------	--------------	--	----------

Cover Type				Density	
A = Aspen	H = Hemlock	P = Lowland Poplar	V = Bog or Marsh	0 = Non Stocked	5 = Pole Timber Medium
B = Paper Birch	J = Jack Pine	Q = Mixed Swamp Cnfr	W = White Pine	1 = Seedling Sapling Poor	6 = Pole Timber Well
C = Cedar	L = Lowland Brush	R = Red Pine	X = Non Stocked	2 = Seedling Sapling Medium	7 = Saw Timber Poor
E = Swamp Hdwoods	M = Mpl, Bch, Brch	S = Black Spruce	Z = Water	3 = Seedling Sapling Well	8 = Saw Timber Medium
F = Spruce Fir	N = Marsh	T = Tamarack		4 = Pole Timber Poor	9 = Saw Timber Well
G = Grass	O = Oak	U = Upland Brush			

Contract Portion of Highline Mix
 Compartment 194
 71 ac



0.5 0.25 0 Miles

