



TIMBER SALE MAP

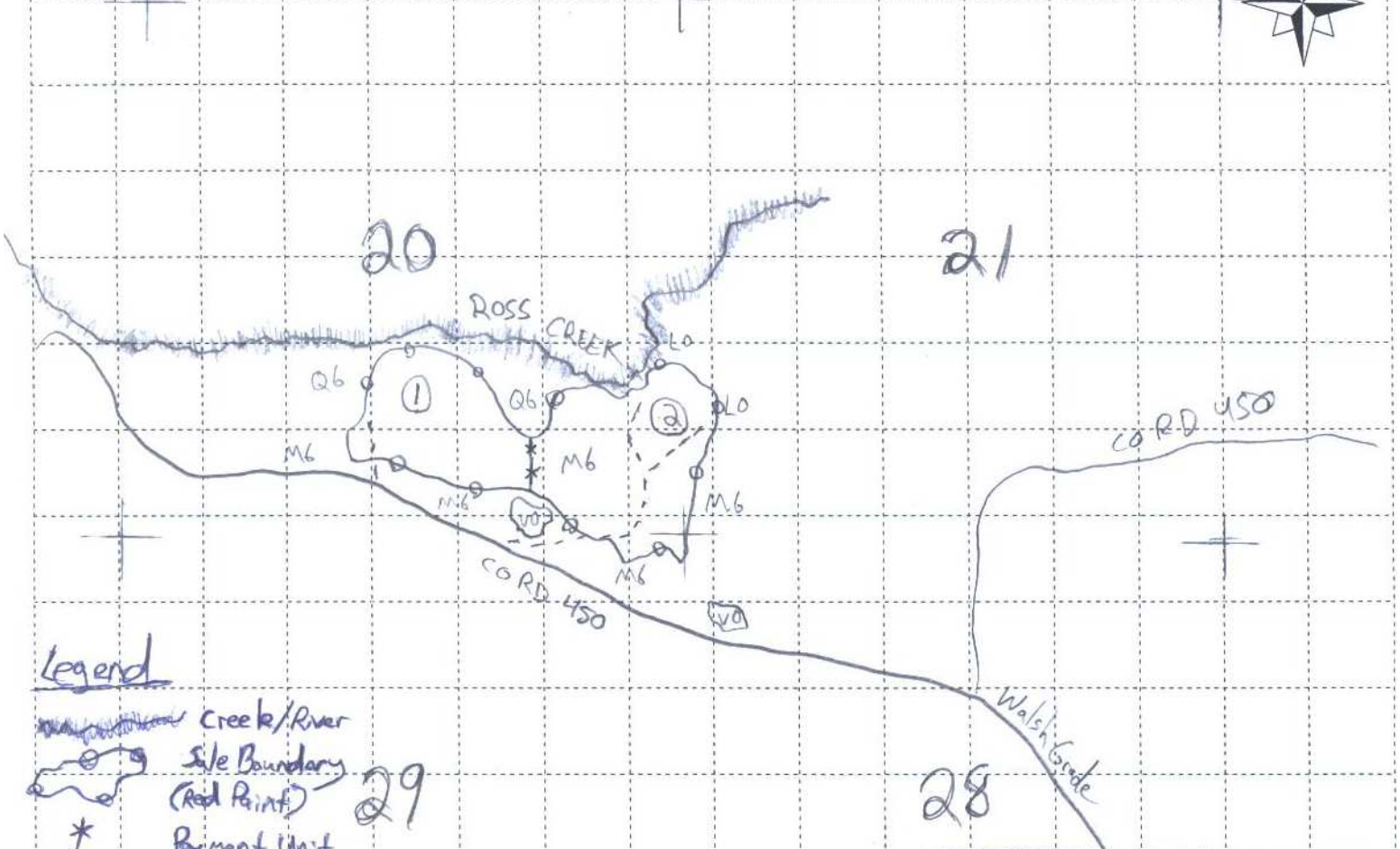
This information provided by authority of Part 525 of Act 451, PA 1994, as amended.

Sale Number	Year

Forest Management Unit <i>Shingleton</i>	County <i>Schoolcraft</i>	Mapped By <i>Jesse Bramer</i>	Date <i>9/29/2010</i>	Page of <i>1 1</i>
Township <i>47N</i>	Range <i>15W</i>	Section(s) and Subdivision(s) <i>Sec. 20-SE 1/4, E 1/2 SW 1/4; 21-W 1/2 SW 29-NENE</i>	Scale: <i>3 1/8 in. = 1 mile</i>	

Cover Type				Density	
A = Aspen	G = Grass	O = Oak	U = Upland Brush	0 = Non Stocked	5 = Pole Timber Medium
B = Paper Birch	H = Hemlock	P = Lowland Poplar	V = Bog or Marsh	1 = Seedling Sapling Poor	6 = Pole Timber Well
C = Cedar	J = Jack Pine	Q = Mixed Swamp Cnfr	W = White Pine	2 = Seedling Sapling Medium	7 = Saw Timber Poor
D = Treed Bog	L = Lowland Brush	R = Red Pine	X = Non Stocked	3 = Seedling Sapling Well	8 = Saw Timber Medium
E = Swamp Hdwoods	M = Mpl, Bch, Brch	S = Black Spruce	Z = Water	4 = Pole Timber Poor	9 = Saw Timber Well
F = Spruce Fir	N = Marsh	T = Tamarack			

Compartment 145 Contractors



Legend

- Creek/River
- Site Boundary (Red Paint)
- Payment Unit Boundary (Yellow Paint)
- Payment Unit Number
- Payment Unit Number
- Trail

