



TIMBER SALE MAP

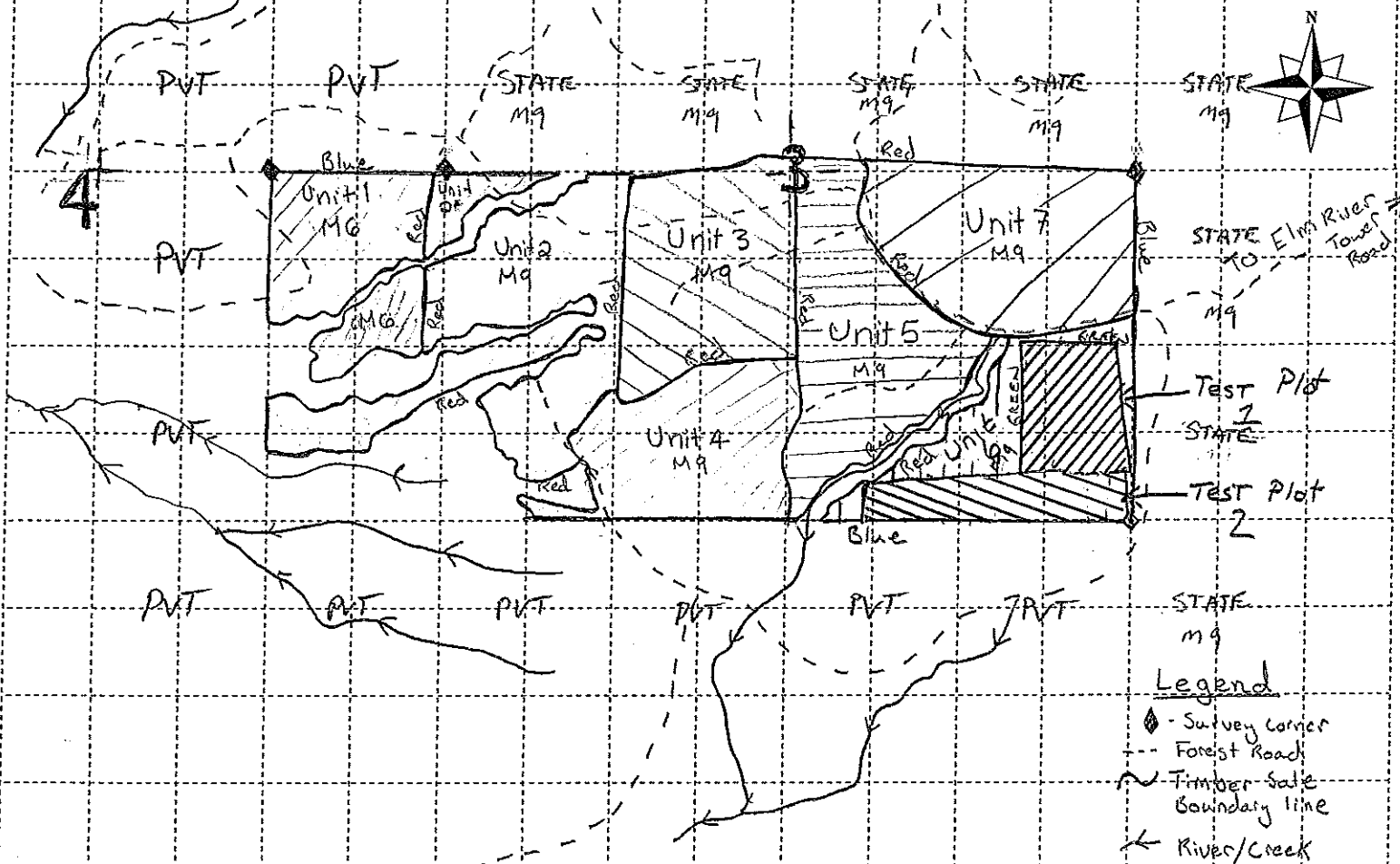
This information provided by authority of Part 525 of Act 451, PA 1994, as amended.

Sale Number	Year
11-010-11-01	2011
Date	Page of
6/23/2011	1 1
Scale: [... 4 inches.....] = 1 mile	

Forest Management Unit	County	Mapped By
Baraga	Houghton	Kentner
Township	Range	Section(s) and Subdivision(s)
52N	36W	Sec 3 - S1/2, Sec 4 - E1/2SE
		Cruised By
		Baraga Staff

Cover Type			
A = Aspen	H = Hemlock	P = Lowland Poplar	V = Bog or Marsh
B = Paper Birch	J = Jack Pine	Q = Mixed Swamp Cnfr	W = White Pine
C = Cedar	L = Lowland Brush	R = Red Pine	X = Non Stocked
E = Swamp Hdwoods	M = Mpl, Bch, Brch	S = Black Spruce	Z = Water
F = Spruce Fir	N = Marsh	T = Tamarack	
G = Grass	O = Oak	U = Upland Brush	

Density	
0 = Non Stocked	5 = Pole Timber Medium
1 = Seedling Sapling Poor	6 = Pole Timber Well
2 = Seedling Sapling Medium	7 = Saw Timber Poor
3 = Seedling Sapling Well	8 = Saw Timber Medium
4 = Pole Timber Poor	9 = Saw Timber Well



T.P. Hardwoods

342 ACRES
Houghton County

UNIT	1	2	3	4	5	6	7	TOTALS
ACRES	35	64	45	42	47	58	51	342
SAWLOGS MBF								
H MAPLE	12.1	54.8	40.9	49.8	85.3	65.4	43.9	352.2
R MAPLE	0.0	0.7	0.1	0.0	0.3	1.7	1.3	4.1
Y BIRCH	0.0	0.0	0.0	0.0	0.1	0.1	0.5	0.7
BASSWOOD	2.1	4.4	20.5	6.6	22.9	19.6	11.5	87.6
W SPRUCE	0.0	0.0	0.0	0.0	0.0	0.3	0.0	0.3
PULPWOOD CDS								
Q. ASPEN	0	4	0	0	0	0	0	4
MIXED HARDWOOD	273	434	243	200	482	320	348	2300

* Unit 6 Contains 2 test plots That will Require Special Harvest Guide lines.

Please read Sale Specific Specifications for further Detail.