



Sale Number	Year
	2012

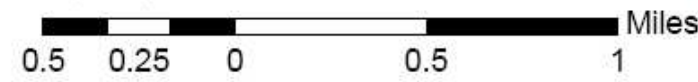
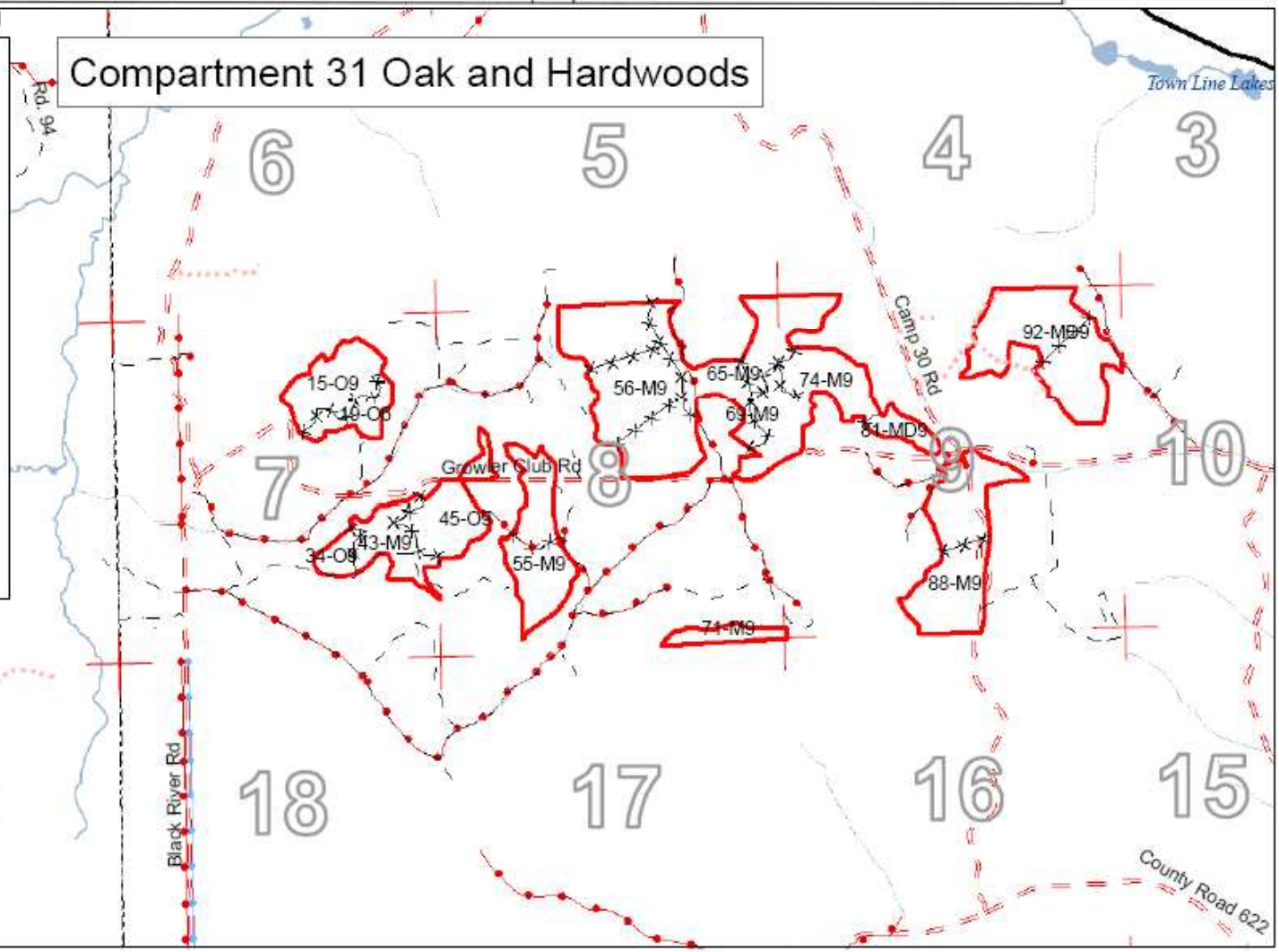
Forest Management Unit Atlanta		County Montmorency	Mapped By Chad Fate	Date 10/14/2011	Page of
Township 31N	Range 01E	Section(s) and Subdivision(s) Sections 7, 8, and 9			Scale: 1:31,680
Cover Type			Density		
A = Aspen	G = Grass	O = Oak	U = Upland Brush	0 = Non Stocked	5 = Pole Timber Medium
B = Paper Birch	H = Hemlock	P = Lowland Poplar	V = Bog or Marsh	1 = Seedling Sapling Poor	6 = Pole Timber Well
C = Cedar	J = Jack Pine	Q = Mixed Swamp Cnfr	W = White Pine	2 = Seedling Sapling Medium	7 = Saw Timber Poor
D = Treed Bog	L = Lowland Brush	R = Red Pine	X = Non Stocked	3 = Seedling Sapling Well	8 = Saw Timber Medium
E = Swamp Hdwoods	M = Mpl, Bch, Brch	S = Black Spruce	Z = Water	4 = Pole Timber Poor	9 = Saw Timber Well
F = Spruce Fir	N = Marsh	T = Tamarack			



Compartment 31 Oak and Hardwoods

Legend

- Miris Corners
- Highway
- County Paved Roads
- Paved Roads
- County Gravel Roads
- Gravel Roads
- Poor Dirt Roads
- County Poor Dirt Roads
- Trail (Non-Recreation)
- Closed Roads
- Pipeline
- Powerline
- Sale Boundaries and Unit Lines (Yellow Paint)
- Sale Boundary (Red Paint)



Compartment 31
 T31N, R01E, Sec. 7 - 9
 County: Montgomery
 Unit: Atlanta
 YO#: 2012
 Acres: 1,883 GIS Calculated
 Stand Examiner: Richard Barber
 Map Revised: 11/10/2010
 Map Phase: Post-Review

Legend

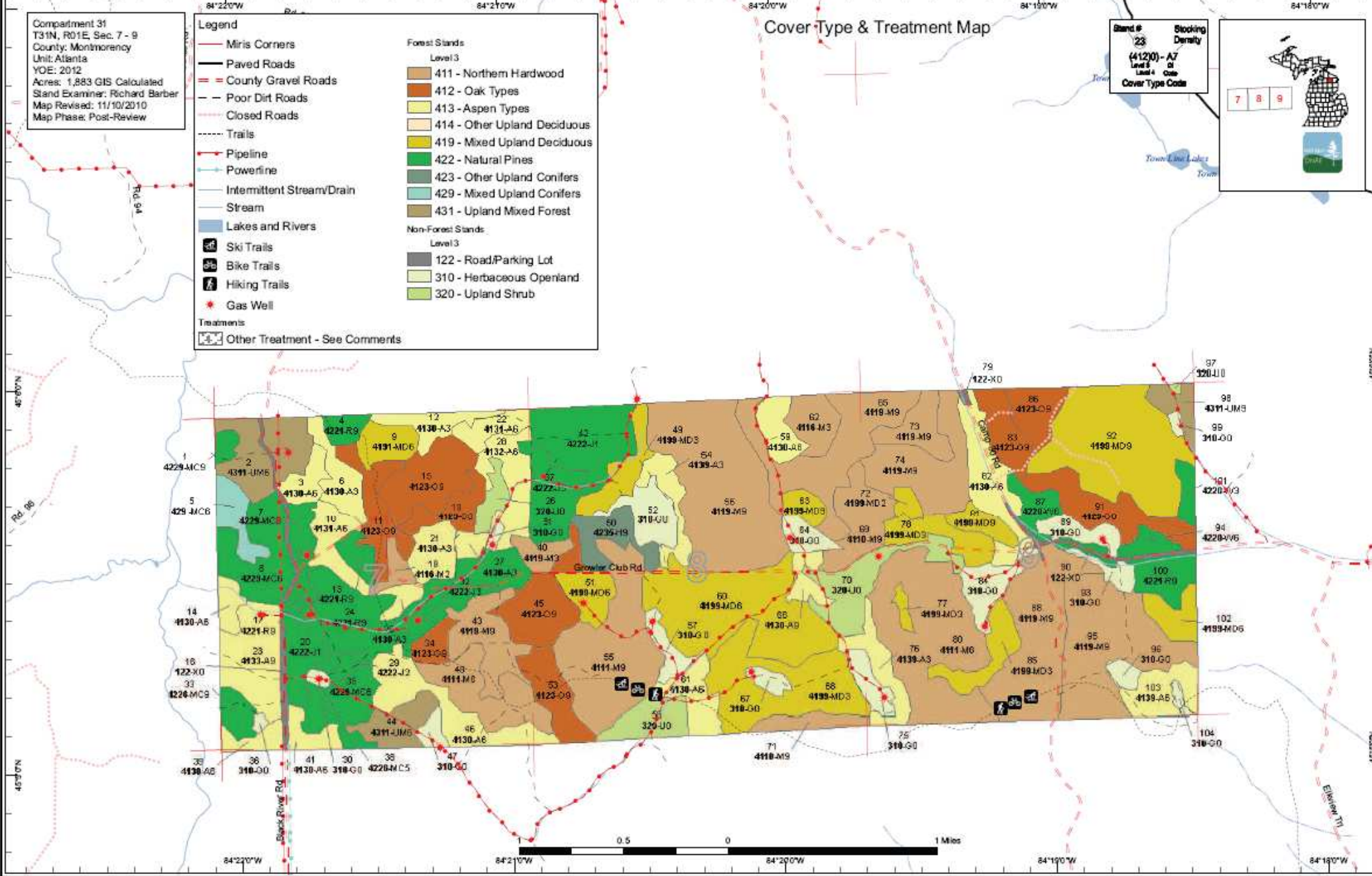
Miris Corners
 Paved Roads
 County Gravel Roads
 Poor Dirt Roads
 Closed Roads
 Trails
 Pipeline
 Intermittent Stream/Drain
 Stream
 Lakes and Rivers
 Ski Trails
 Bike Trails
 Hiking Trails
 Gas Well
 Other Treatment - See Comments

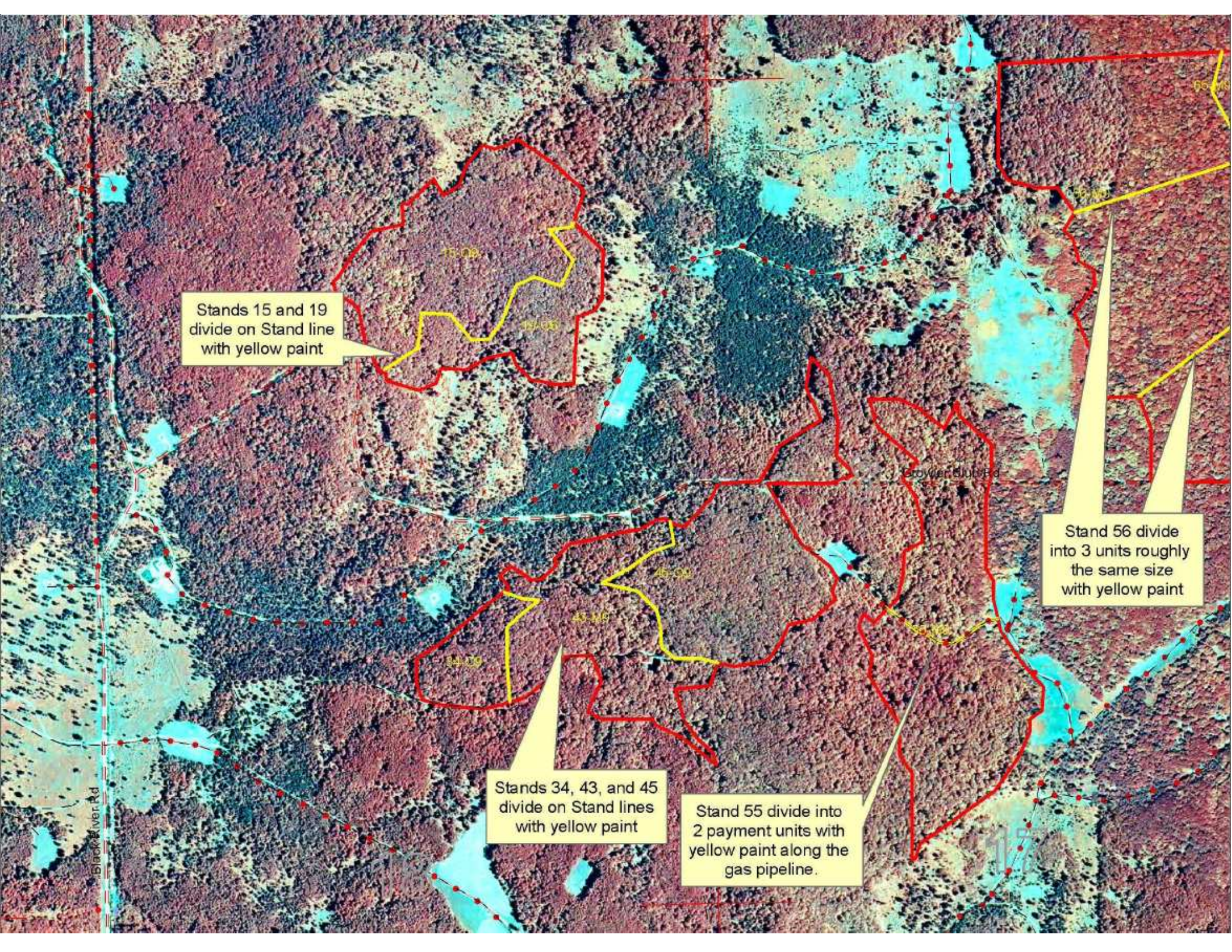
Forest Stands
 Level 3
 411 - Northern Hardwood
 412 - Oak Types
 413 - Aspen Types
 414 - Other Upland Deciduous
 419 - Mixed Upland Deciduous
 422 - Natural Pines
 423 - Other Upland Conifers
 429 - Mixed Upland Conifers
 431 - Upland Mixed Forest

Non-Forest Stands
 Level 3
 122 - Road/Parking Lot
 310 - Herbaceous Openland
 320 - Upland Shrub

Cover Type & Treatment Map

Stand #
 23
 (4120) - A7
 Level 3
 Level 4
 Cover Type Code





Stands 15 and 19 divide on Stand line with yellow paint

Stand 56 divide into 3 units roughly the same size with yellow paint

Stands 34, 43, and 45 divide on Stand lines with yellow paint

Stand 55 divide into 2 payment units with yellow paint along the gas pipeline.

Black River Rd

Boyer Club Rd

15-06

19-05

45-04

43-06

34-09

56-05

118

Stand 65 divide into 2 units roughly the same size with yellow paint

Stand 92 divide into 2 units roughly the same size with yellow paint

Stand 56 divide into 3 units roughly the same size with yellow paint

Stands 56, 65, 69, 74, 81 divide on stand lines with yellow paint

Stand 88 divide into 2 units roughly the same size with yellow paint

Stand 71 red paint only

