



TIMBER SALE MAP

63-003-12-01

2012

This information provided by authority of Part 525, 1994 PA 451, as amended.

Forest Management Unit Cadillac		County Lake	Mapped By C. Nelson	Date 10/26/2011	Page 1	of 2
Township 18N	Range 11W	Section(s) and Subdivision(s) 7: See below			1:15,840	

Cover Type

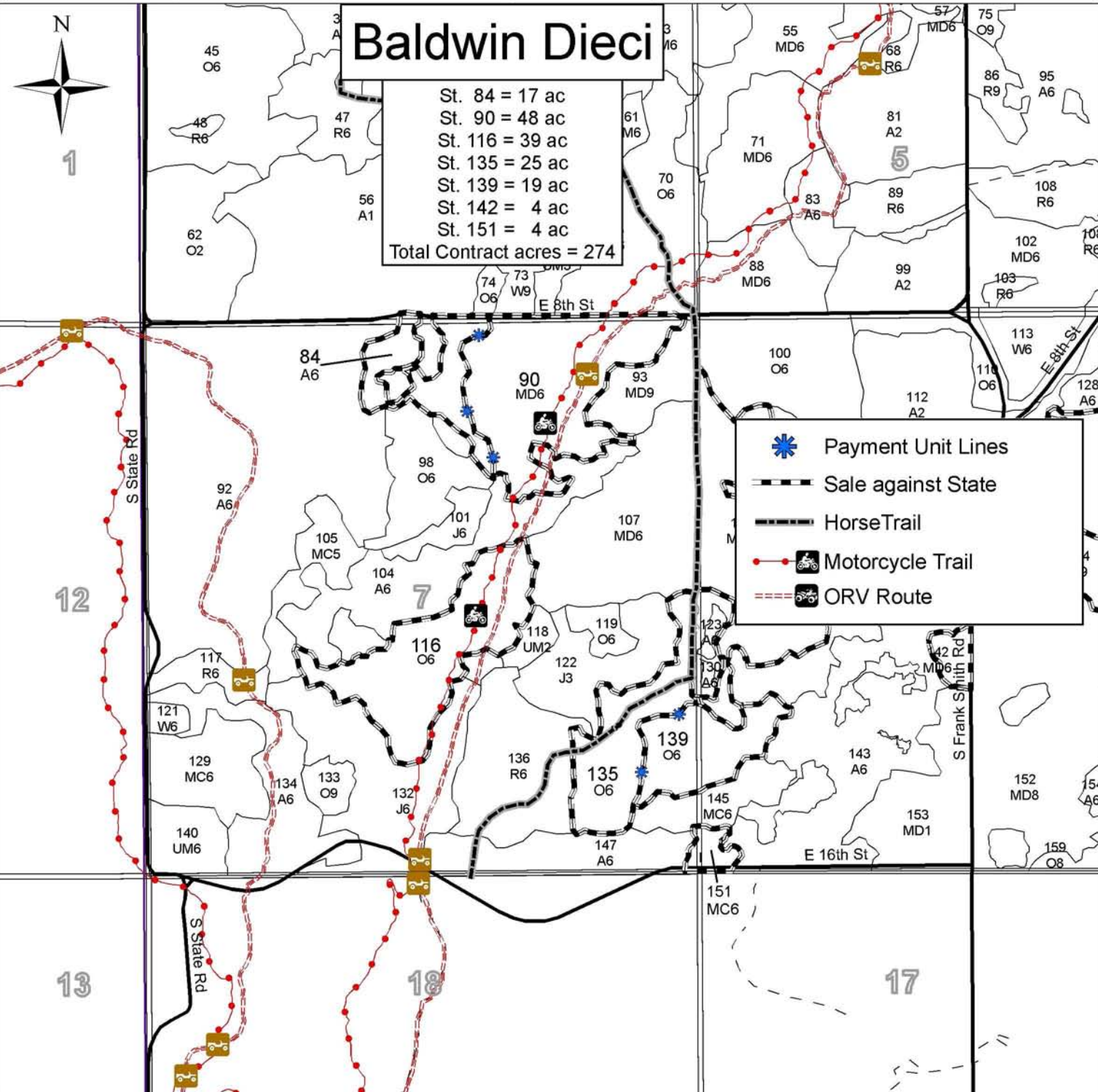
A = Aspen	G = Grass	O = Oak	U = Upland Brush
B = Paper Birch	H = Hemlock	P = Lowland Poplar	V = Bog or Marsh
C = Cedar	J = Jack Pine	Q = Mixed Swamp Cnfr	W = White Pine
D = Treed Bog	L = Lowland Brush	R = Red Pine	X = Non Stocked
E = Swamp Hdwoods	M = Mpl, Bch, Brch	S = Black Spruce	Z = Water
F = Spruce Fir	N = Marsh	T = Tamarack	

Density

0 = Non Stocked	5 = Pole Timber Medium
1 = Seedling Sapling Poor	6 = Pole Timber Well
2 = Seedling Sapling Medium	7 = Saw Timber Poor
3 = Seedling Sapling Well	8 = Saw Timber Medium
4 = Pole Timber Poor	9 = Saw Timber Well

Baldwin Dieci

St. 84 = 17 ac
 St. 90 = 48 ac
 St. 116 = 39 ac
 St. 135 = 25 ac
 St. 139 = 19 ac
 St. 142 = 4 ac
 St. 151 = 4 ac
Total Contract acres = 274



0.5 0.25 0 0.5 Miles



TIMBER SALE MAP

63-003-12-01

2012

This information provided by authority of Part 525, 1994 PA 451, as amended.

Forest Management Unit Cadillac		County Lake	Mapped By C. Nelson	Date 10/26/2011	Page 2	of 2
Township 18N	Range 11W	Section(s) and Subdivision(s) 8: See below			1:15,840	

Cover Type

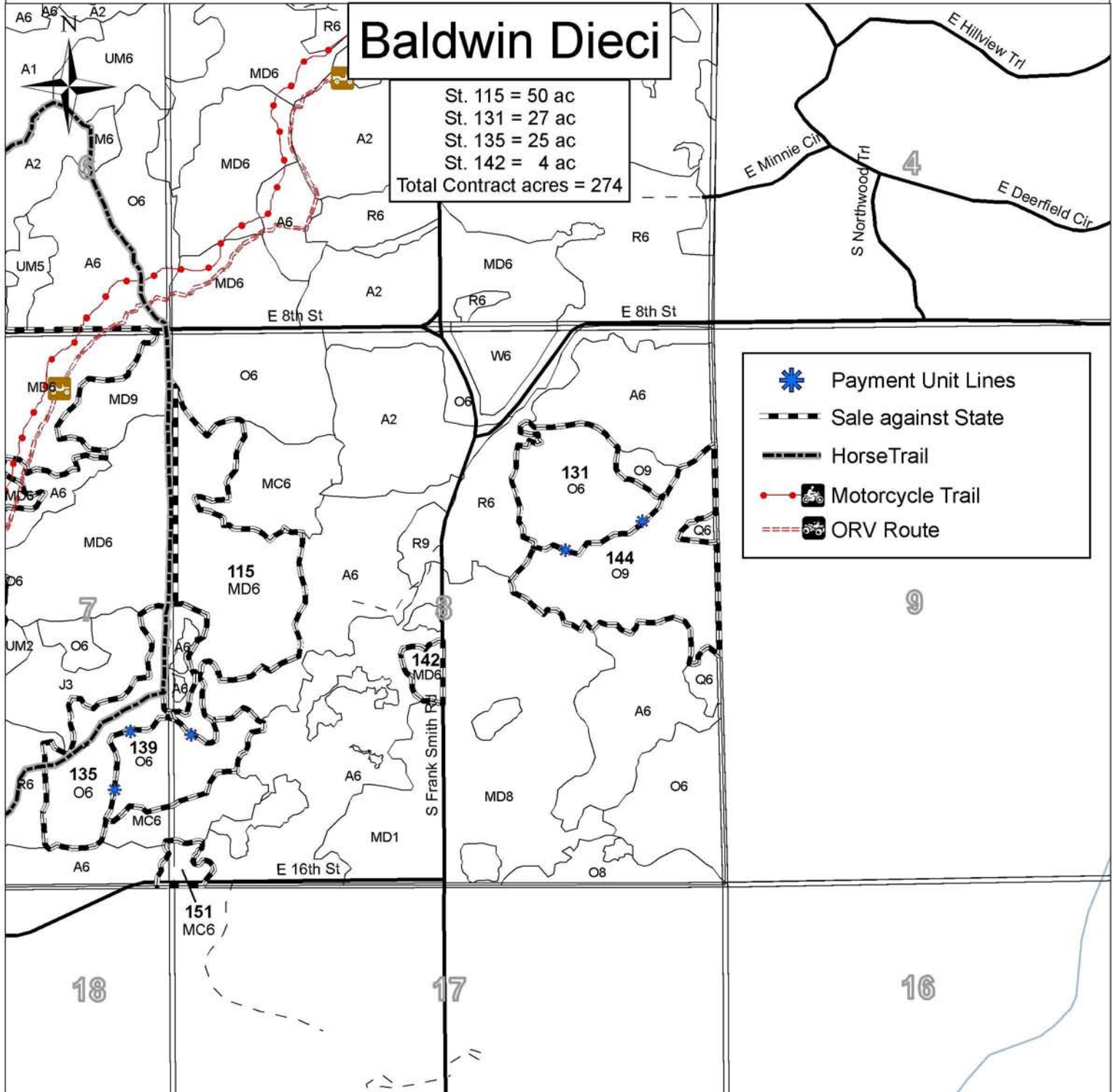
A = Aspen	G = Grass	O = Oak	U = Upland Brush
B = Paper Birch	H = Hemlock	P = Lowland Poplar	V = Bog or Marsh
C = Cedar	J = Jack Pine	Q = Mixed Swamp Cnfr	W = White Pine
D = Treed Bog	L = Lowland Brush	R = Red Pine	X = Non Stocked
E = Swamp Hdwoods	M = Mpl, Bch, Brch	S = Black Spruce	Z = Water
F = Spruce Fir	N = Marsh	T = Tamarack	

Density

0 = Non Stocked	5 = Pole Timber Medium
1 = Seedling Sapling Poor	6 = Pole Timber Well
2 = Seedling Sapling Medium	7 = Saw Timber Poor
3 = Seedling Sapling Well	8 = Saw Timber Medium
4 = Pole Timber Poor	9 = Saw Timber Well

Baldwin Dieci

St. 115 = 50 ac
 St. 131 = 27 ac
 St. 135 = 25 ac
 St. 142 = 4 ac
Total Contract acres = 274



0.5 0.25 0 0.5 Miles