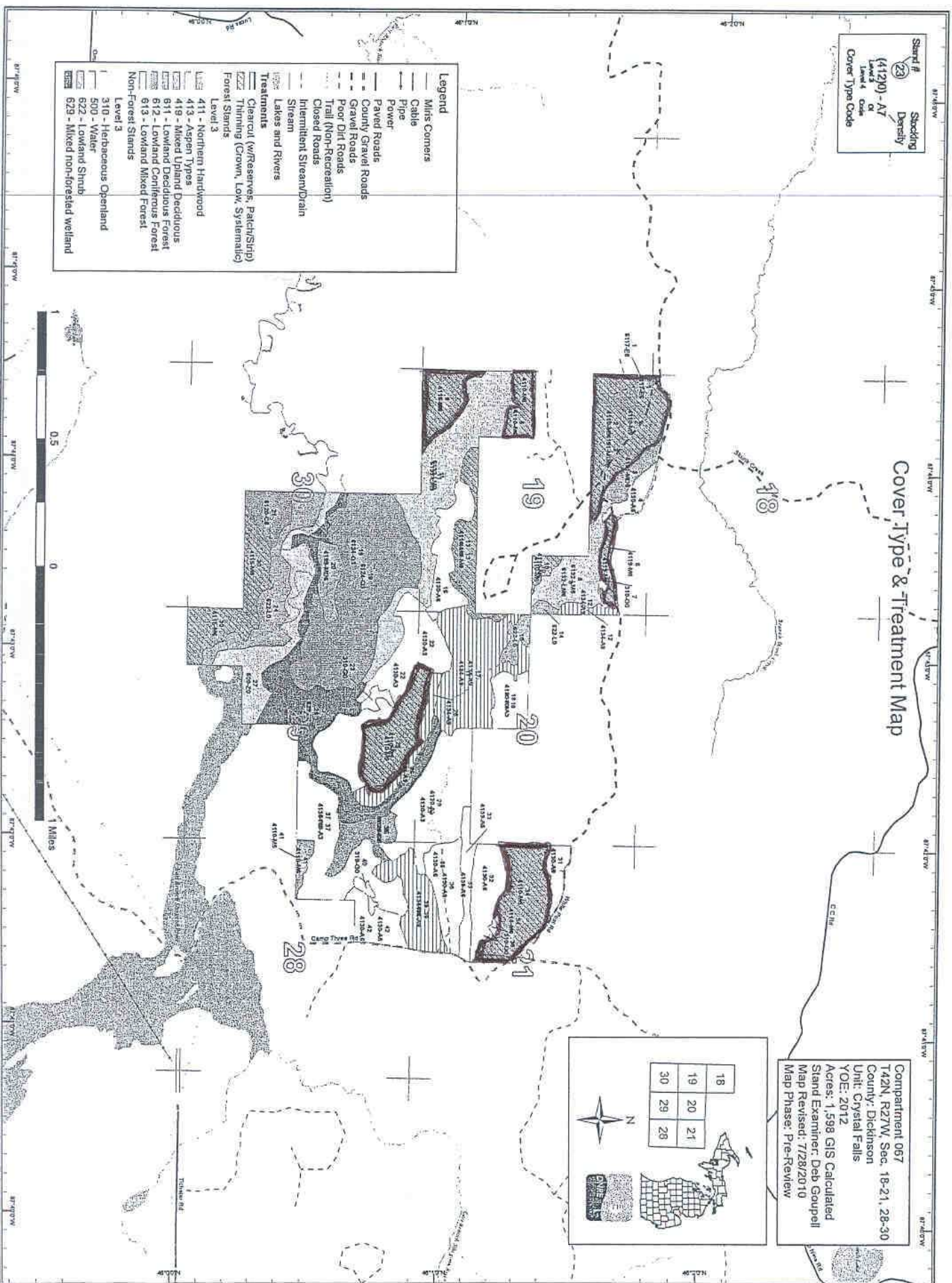


Stand # (22)
 Density (412)0 - A7
 Level 3
 Level 4 Code
 Cover Type Code

Cover Type & Treatment Map

- Legend**
- Mills Corners
 - Cable
 - Pipe
 - Power
 - Paved Roads
 - County Gravel Roads
 - Gravel Roads
 - Poor Dirt Roads
 - Trail (Non-Recreation)
 - Closed Roads
 - Intermittent Stream/Drain
 - Stream
 - Lakes and Rivers
- Treatments**
- Clearcut (w/Reserves, Patch/Strip)
 - Thinning (Crown, Low, Systematic)
 - Forest Stands
- Level 3**
- 411 - Northern Hardwood
 - 413 - Aspen Types
 - 419 - Mixed Upland Deciduous
 - 811 - Lowland Deciduous Forest
 - 812 - Lowland Coniferous Forest
 - 813 - Lowland Mixed Forest
 - Non-Forest Stands
- Level 3**
- 310 - Herbaceous Openland
 - 500 - Water
 - 622 - Lowland Shrub
 - 629 - Mixed non-forested wetland



Compass rose and north arrow.

18	20	21
19	20	21
30	29	28

Compartiment 067
 T42N, R27W, Sec. 16-21, 28-30
 County: Dickinson
 Unit: Crystal Falls
 YO#: 2012
 Acres: 1,598 GIS Calculated
 Stand Examiner: Deb Gouppell
 Map Revised: 7/28/2010
 Map Phase: Pre-Review



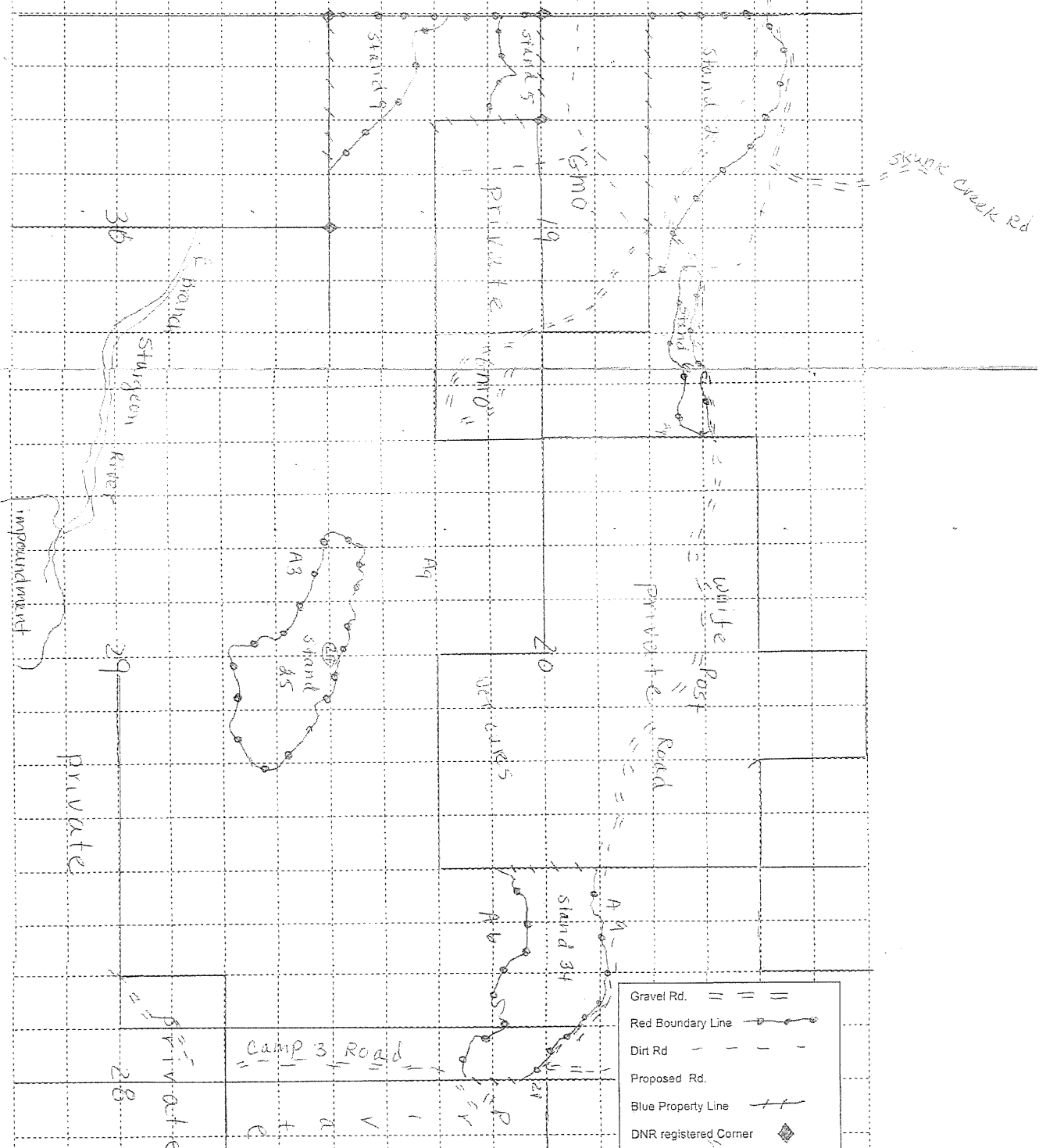
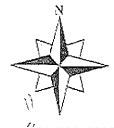
FOREST MANAGEMENT UNIT: Crystal Falls		COUNTY Dickinson	MAPPED BY Linda Lindberg	DATE 11/7/2011	PAGE 1	OF 1
TOWNSHIP 42N	Range 27W	SECTION(S) AND SUBDIVISION(S) 19, 20, 21 and 29		CRUISED BY		

Cover Type				Density		
------------	--	--	--	---------	--	--

A = Aspen	H = Hemlock	P = Lowland Poplar	V = Bog or Marsh	0 = Non Stocked	5 = Pole Timber Medium
B = Paper Birch	J = Jack Pine	Q = Mixed Swamp Cnfr	W = White Pine	1 = Seeding Sapling Poor	6 = Pole Timber Well
C = Cedar	L = Lowland Brush	R = Red Pine	X = Non Stocked	2 = Seeding Sapling Medium	7 = Saw Timber Poor
E = Swamp Hdwoods	M = Mpl, Boh, Brch	S = Black Spruce	Z = Water	3 = Seeding Sapling Well	8 = Saw Timber Medium
F = Spruce Fir	N = Marsh	T = Tamarack		4 = Pole Timber Poor	9 = Saw Timber Well
G = Grass	O = Oak	U = Upland Brush			

Comp 67 Contract
 Stand 2 Stand 5 Stand 6 Stand 9
 78 Ac. 20 Ac. 8 Ac. 34 Ac.
 Stand 25 Stand 34
 48 Ac. 63 Ac. Total Approx. Acres= 251

Hardwood marking and boundary and property line placement



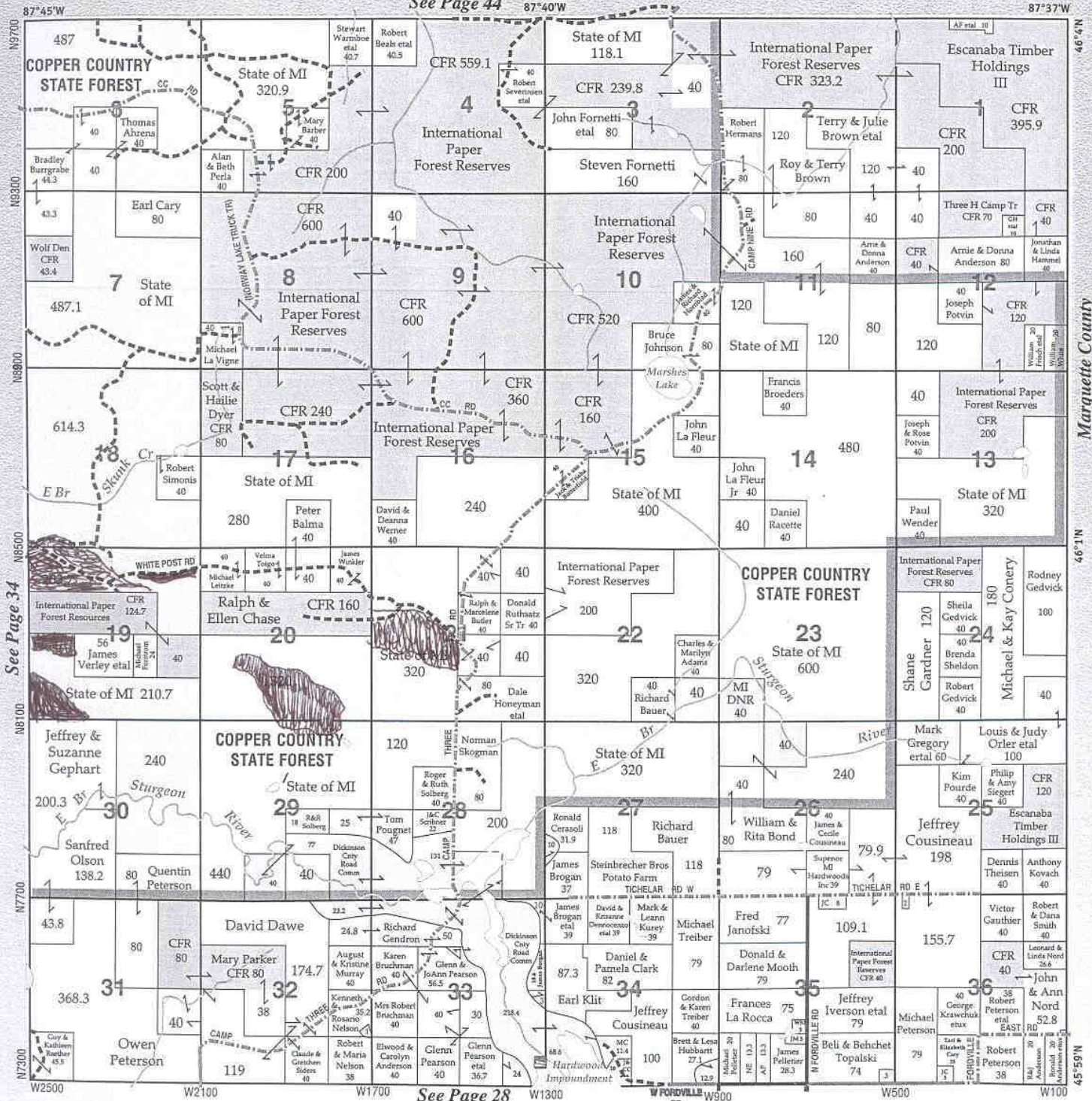


15. Breen (N)

©2006 cloud cartographics, inc. st. cloud, mn 56301

T.42N. - R.27W.

See Page 44



See Page 34

See Page 28

Marquette County

46°1'N

APPLEKAMP Land Surveying

Steve Applekamp • PLS Stuart Peterson
Michigan & Wisconsin
Boundary/Topographic Surveys

1312 Margaret ST, Iron Mountain, Michigan
(906) 776-1005

HOTFLAME GAS

Division of SEMCO ENERGY, INC.

Toll Free (800) 882-3200
Carney, MI (906) 639-2122
Iron Mtn, MI (906) 774-0276
Fax: (906) 639-2173

Toll Free (866) 309-7222
Wausaukee, WI (715) 865-5158
Fax: (715) 856-6515

Dickinson, MI