



Michigan Department of Natural Resources - Forest Management
TIMBER SALE MAP

This information provided by authority of Part 525 of Act 451, PA 1994, as amended.

SALE NUMBER	YEAR
	12
DATE	PAGE OF
2/16/12	1 1

FOREST MANAGEMENT UNIT: Crystal Falls	COUNTY Dickinson	MAPPED BY Linda Lindberg CRUISED BY Contractor	DATE 2/16/12	PAGE OF 1 1
TOWNSHIP 41N	Range 29W	SECTION(S) AND SUBDIVISION(S) 3 NWSW; 4 SESE, NWSW, SWSW, SESW, W1/2NW, NWNW 0 N1/2NW	Scale: [.....4 inches.....] = 1 mile	

Cover Type

- | | | | |
|-------------------|--------------------|----------------------|------------------|
| A = Aspen | H = Hemlock | P = Lowland Poplar | V = Bog or Marsh |
| B = Paper Birch | J = Jack Pine | Q = Mixed Swamp Cnfr | W = White Pine |
| C = Cedar | L = Lowland Brush | R = Red Pine | X = Non Stocked |
| E = Swamp Hdwoods | M = Mpl, Bch, Brch | S = Black Spruce | Z = Water |
| F = Spruce Fir | N = Marsh | T = Tamarack | |
| G = Grass | O = Oak | U = Upland Brush | |

Density

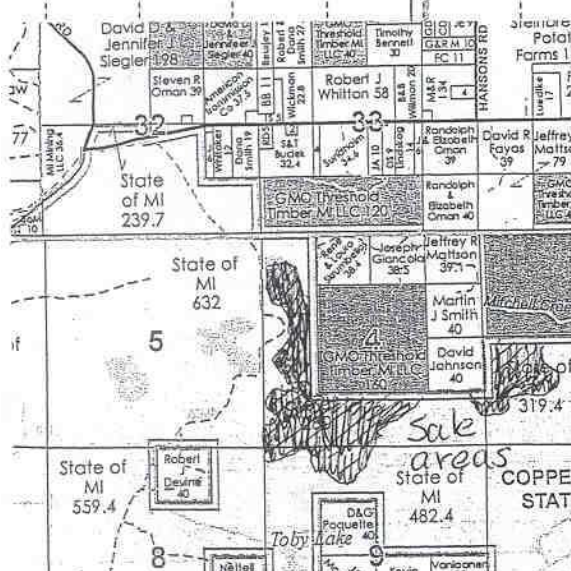
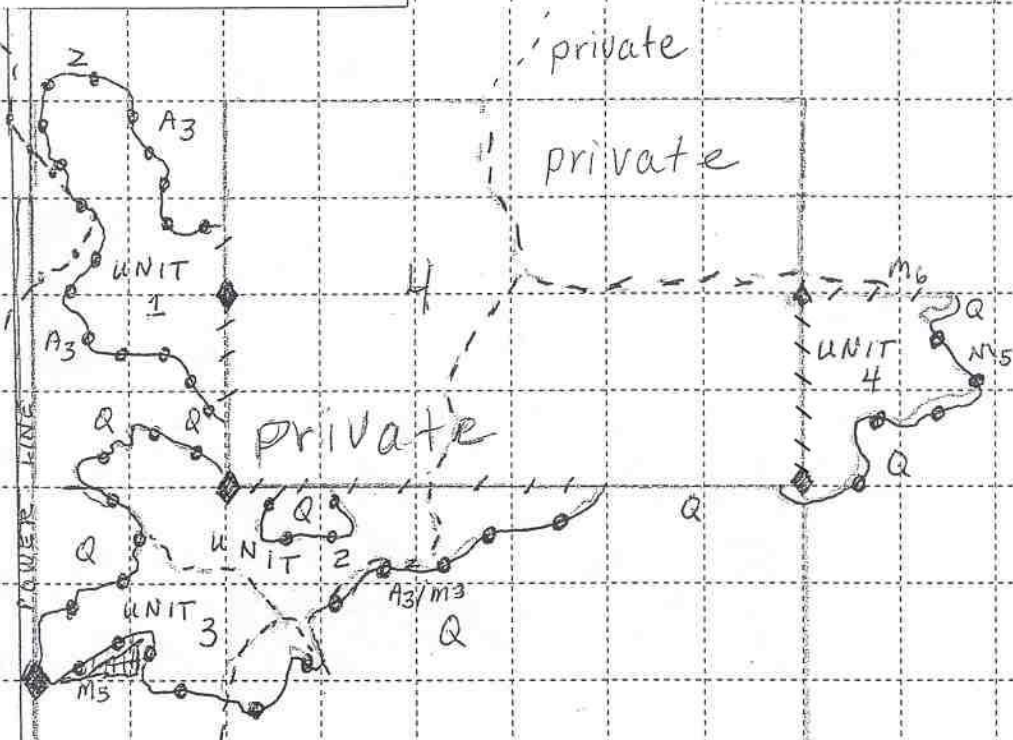
- | | |
|-----------------------------|------------------------|
| 0 = Non Stocked | 5 = Pole Timber Medium |
| 1 = Seedling Sapling Poor | 6 = Pole Timber Well |
| 2 = Seedling Sapling Medium | 7 = Saw Timber Poor |
| 3 = Seedling Sapling Well | 8 = Saw Timber Medium |
| 4 = Pole Timber Poor | 9 = Saw Timber Well |

Comp 72 Sale

Unit 1 Unit 2 Unit 3 Unit 4
 34 Acres 46 Acres 27 Acres 22 Acres
 129 Acres total Selection Harvest



To
GroveLand
mine Rd.
private
private



Logging Rd. - - - - -

DNR Corner

Red Boundary Line

Blue Property Line

Reserve Areas

Snowmobile Trail