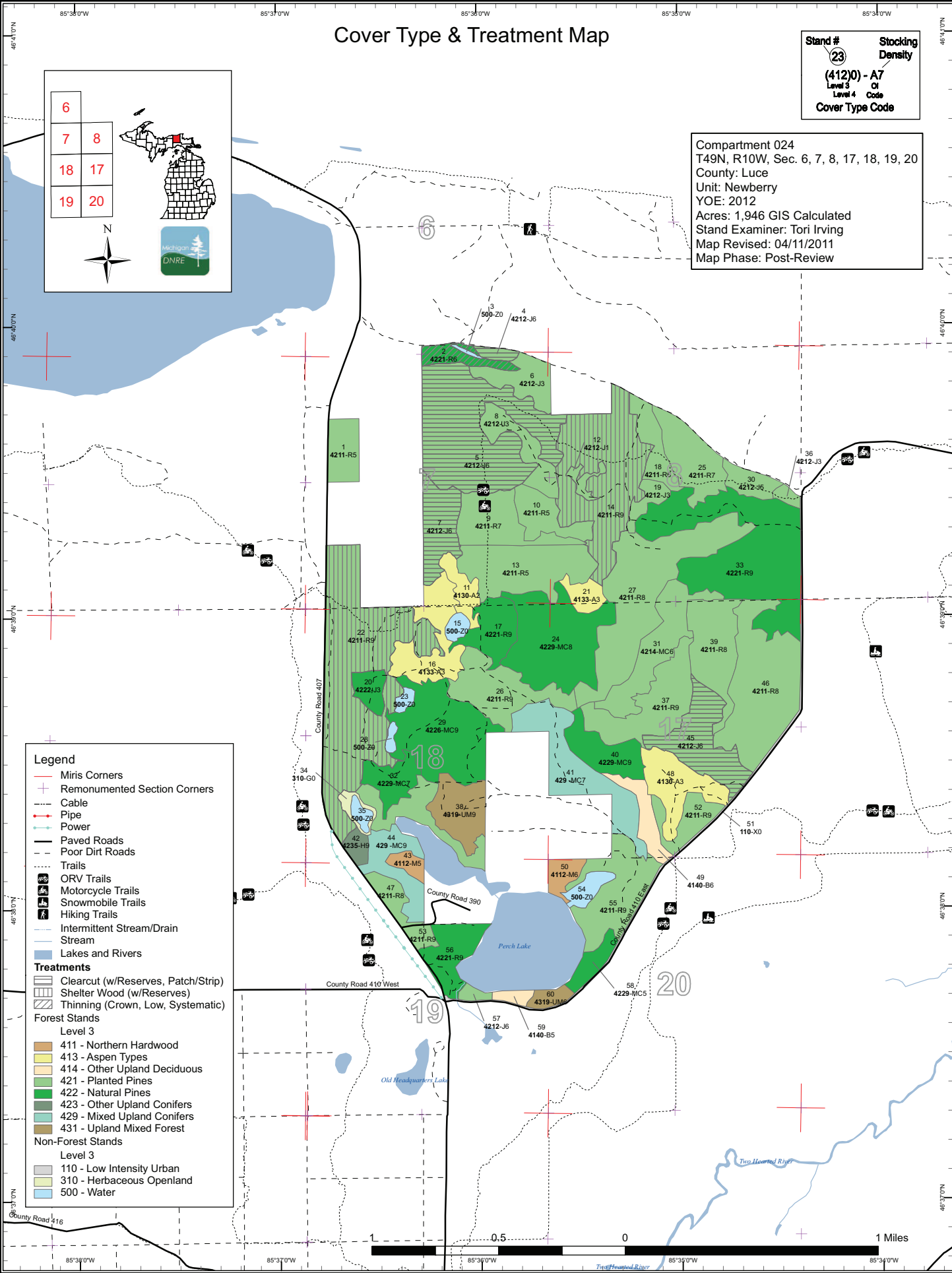
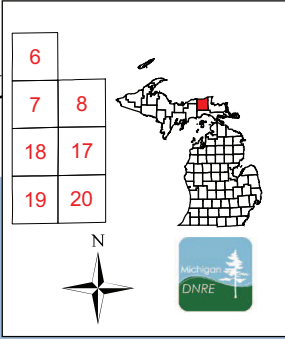


# Cover Type & Treatment Map

**Stand #**  
 (23)  
**Stocking Density**  
 (412)0 - A7  
 Level 3  
 Level 4  
**Code**  
 Cover Type Code

Compartment 024  
 T49N, R10W, Sec. 6, 7, 8, 17, 18, 19, 20  
 County: Luce  
 Unit: Newberry  
 YOY: 2012  
 Acres: 1,946 GIS Calculated  
 Stand Examiner: Tori Irving  
 Map Revised: 04/11/2011  
 Map Phase: Post-Review



**Legend**

- Miris Corners
- Remounted Section Corners
- Cable
- Pipe
- Power
- Paved Roads
- Poor Dirt Roads
- Trails
- ORV Trails
- Motorcycle Trails
- Snowmobile Trails
- Hiking Trails
- Intermittent Stream/Drain
- Stream
- Lakes and Rivers

**Treatments**

- Clearcut (w/Reserves, Patch/Strip)
- Shelter Wood (w/Reserves)
- Thinning (Crown, Low, Systematic)

**Forest Stands**

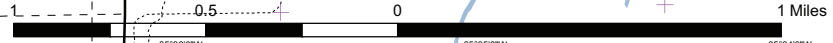
Level 3

- 411 - Northern Hardwood
- 413 - Aspen Types
- 414 - Other Upland Deciduous
- 421 - Planted Pines
- 422 - Natural Pines
- 423 - Other Upland Conifers
- 429 - Mixed Upland Conifers
- 431 - Upland Mixed Forest

**Non-Forest Stands**

Level 3

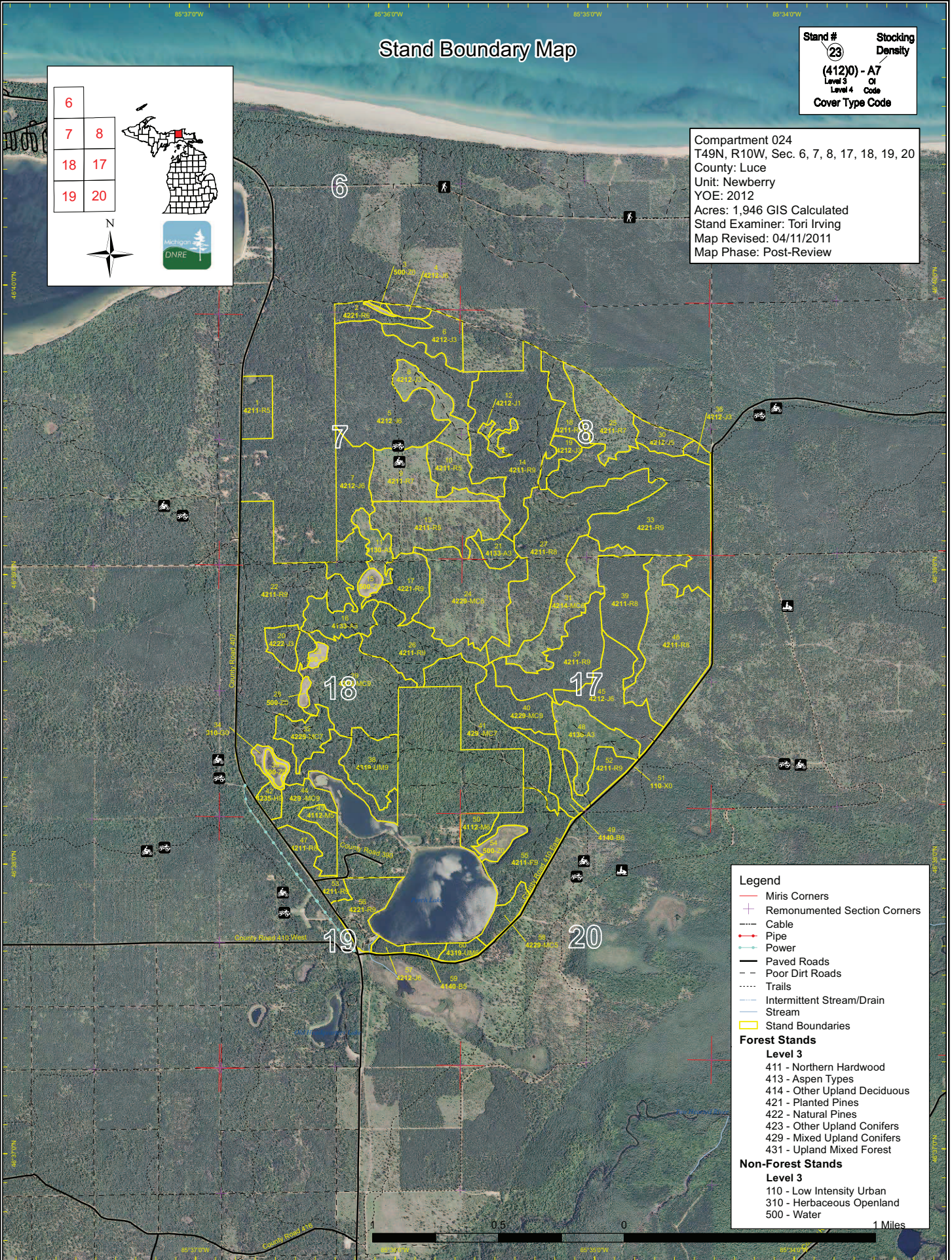
- 110 - Low Intensity Urban
- 310 - Herbaceous Openland
- 500 - Water



# Stand Boundary Map

Stand # (412)0 - A7  
 Stocking Density  
 Level 3  
 Level 4  
 Code  
 Cover Type Code

Compartment 024  
 T49N, R10W, Sec. 6, 7, 8, 17, 18, 19, 20  
 County: Luce  
 Unit: Newberry  
 YOE: 2012  
 Acres: 1,946 GIS Calculated  
 Stand Examiner: Tori Irving  
 Map Revised: 04/11/2011  
 Map Phase: Post-Review



**Legend**

- Miris Corners
- Remounted Section Corners
- Cable
- Pipe
- Power
- Paved Roads
- Poor Dirt Roads
- Trails
- Intermittent Stream/Drain
- Stream
- Stand Boundaries

**Forest Stands**

**Level 3**

- 411 - Northern Hardwood
- 413 - Aspen Types
- 414 - Other Upland Deciduous
- 421 - Planted Pines
- 422 - Natural Pines
- 423 - Other Upland Conifers
- 429 - Mixed Upland Conifers
- 431 - Upland Mixed Forest

**Non-Forest Stands**

**Level 3**

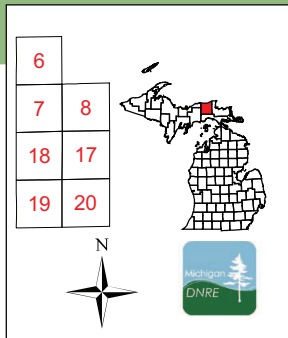
- 110 - Low Intensity Urban
- 310 - Herbaceous Openland
- 500 - Water

1 Miles

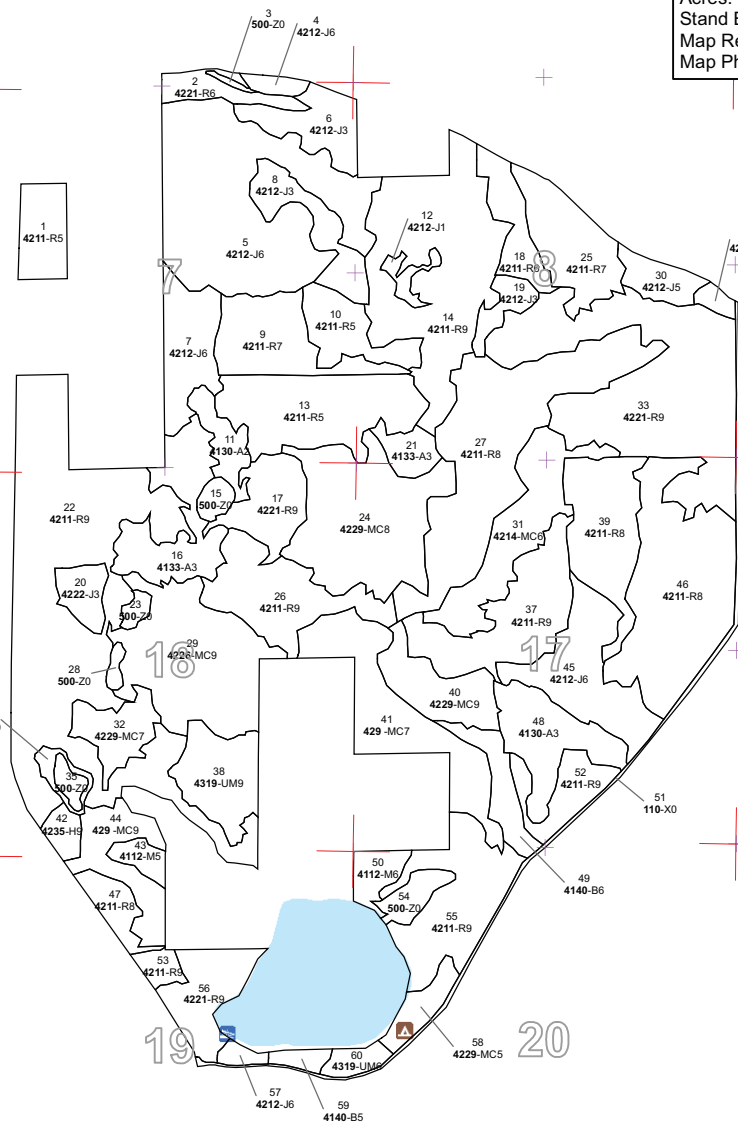
# Dedicated & Proposed Special Conservation Area Map

Stand #  
 (412)0 - A7  
 Level 3  
 Level 4  
 Cover Type Code

Stocking  
 Density  
 23  
 01  
 Code



Compartment 024  
 T49N, R10W, Sec. 6, 7, 8, 17, 18, 19, 20  
 County: Luce  
 Unit: Newberry  
 YOE: 2012  
 Acres: 1,946 GIS Calculated  
 Stand Examiner: Tori Irving  
 Map Revised: 04/11/2011  
 Map Phase: Post-Review



**Legend**

- Miris Corners
- Stand Boundaries
- Remonumented Section Corners
- Proposed Special Conservation Areas**
  - SCA - Special Conservation Area
  - SCA Removal
- Dedicated Special Conservation Areas**
  - Cold Water Lakes
  - Cold Water Streams
  - Non-Dedicated Natural Areas and National Natural Landmarks
  - Boat Access Sites
  - Campgrounds
  - Critical Coastal Habitat (Piping Plover)
  - Natural Rivers Zoning District
  - Natural Rivers Vegetative Buffer

**Forest Stands**

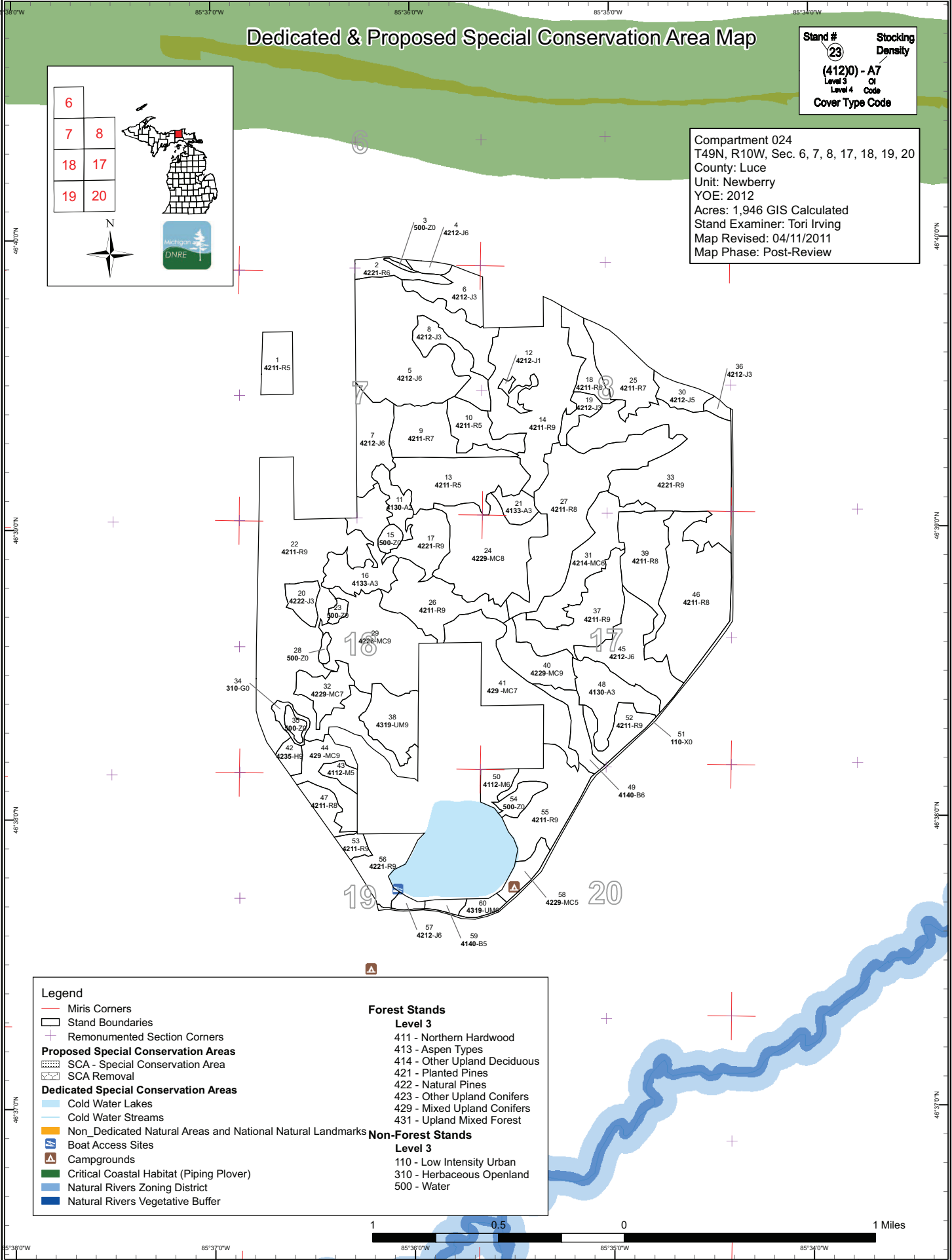
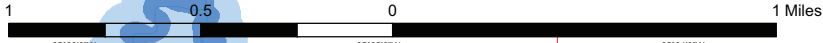
**Level 3**

- 411 - Northern Hardwood
- 413 - Aspen Types
- 414 - Other Upland Deciduous
- 421 - Planted Pines
- 422 - Natural Pines
- 423 - Other Upland Conifers
- 429 - Mixed Upland Conifers
- 431 - Upland Mixed Forest

**Non-Forest Stands**

**Level 3**

- 110 - Low Intensity Urban
- 310 - Herbaceous Openland
- 500 - Water

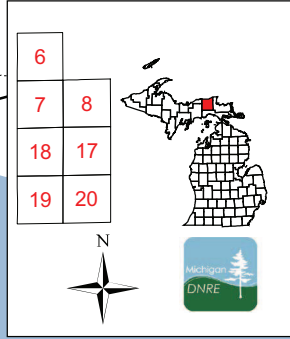


# Cover Type & Treatment Map

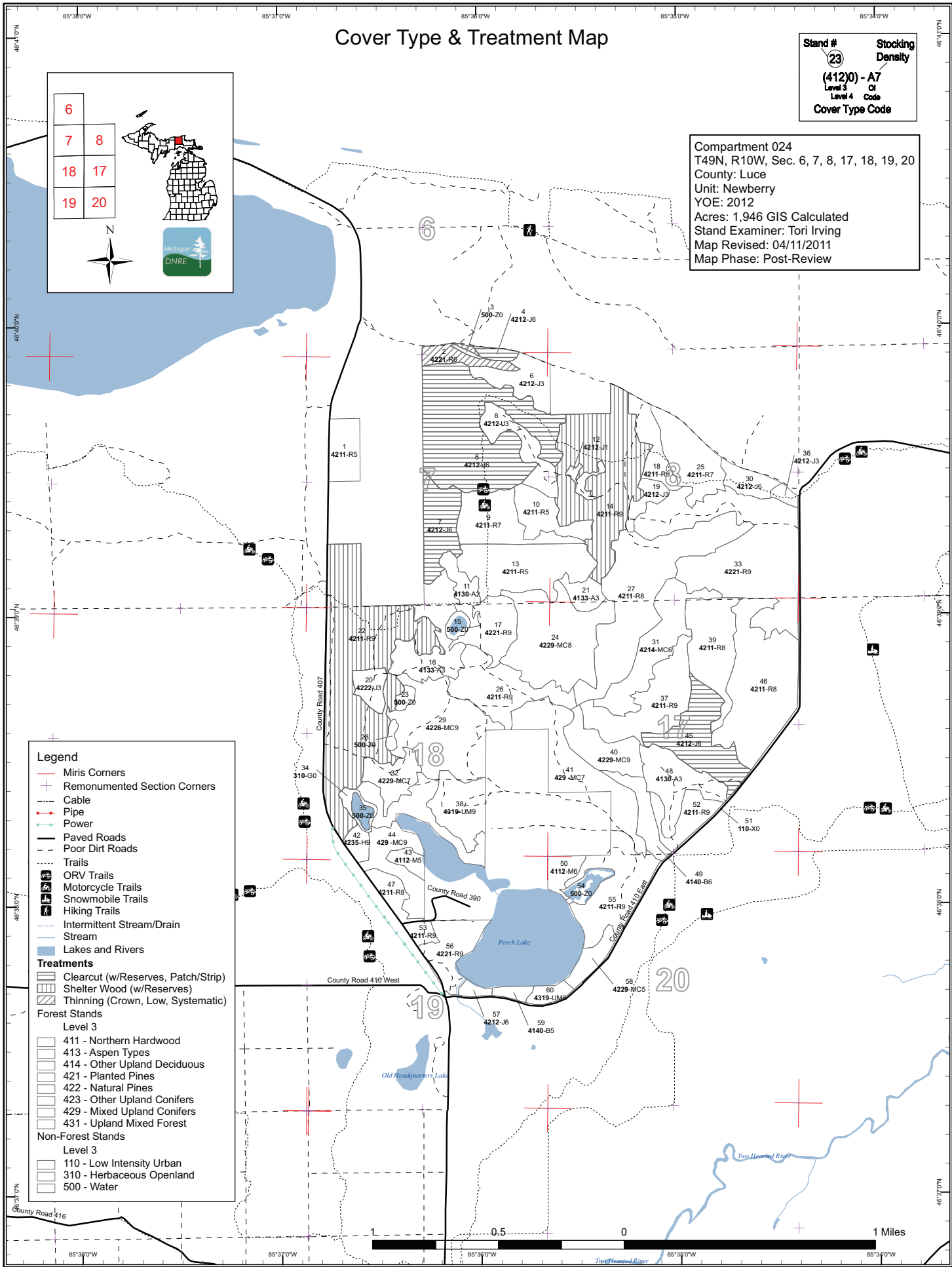
Stand #  
**(412)0** - A7  
 Level 3  
 Level 4  
 Code  
 Cover Type Code

Stocking  
 Density

Compartment 024  
 T49N, R10W, Sec. 6, 7, 8, 17, 18, 19, 20  
 County: Luce  
 Unit: Newberry  
 YOE: 2012  
 Acres: 1,946 GIS Calculated  
 Stand Examiner: Tori Irving  
 Map Revised: 04/11/2011  
 Map Phase: Post-Review



- Legend**
- Miris Corners
  - Remonumented Section Corners
  - Cable
  - Pipe
  - Power
  - Paved Roads
  - Poor Dirt Roads
  - Trails
  - ORV Trails
  - Motorcycle Trails
  - Snowmobile Trails
  - Hiking Trails
  - Intermittent Stream/Drain
  - Stream
  - Lakes and Rivers
- Treatments**
- Clearcut (w/Reserves, Patch/Strip)
  - Shelter Wood (w/Reserves)
  - Thinning (Crown, Low, Systematic)
- Forest Stands**
- Level 3
- 411 - Northern Hardwood
  - 413 - Aspen Types
  - 414 - Other Upland Deciduous
  - 421 - Planted Pines
  - 422 - Natural Pines
  - 423 - Other Upland Conifers
  - 429 - Mixed Upland Conifers
  - 431 - Upland Mixed Forest
- Non-Forest Stands**
- Level 3
- 110 - Low Intensity Urban
  - 310 - Herbaceous Openland
  - 500 - Water





# TIMBER SALE MAP

This information provided by authority of Part 525, 1994 PA 451, as amended.

42-001

12

Forest Management Unit <b>Newberry</b>		County <b>Luce</b>	Mapped By <b>Darling, Irving</b>	Date <b>10/1/11</b>	Page <b>1</b>	of <b>1</b>
Township <b>49N</b>	Range <b>8W</b>	Section(s) and Subdivision(s) <b>Sect 8 S1/2NW, NENW, SW1/4</b>				

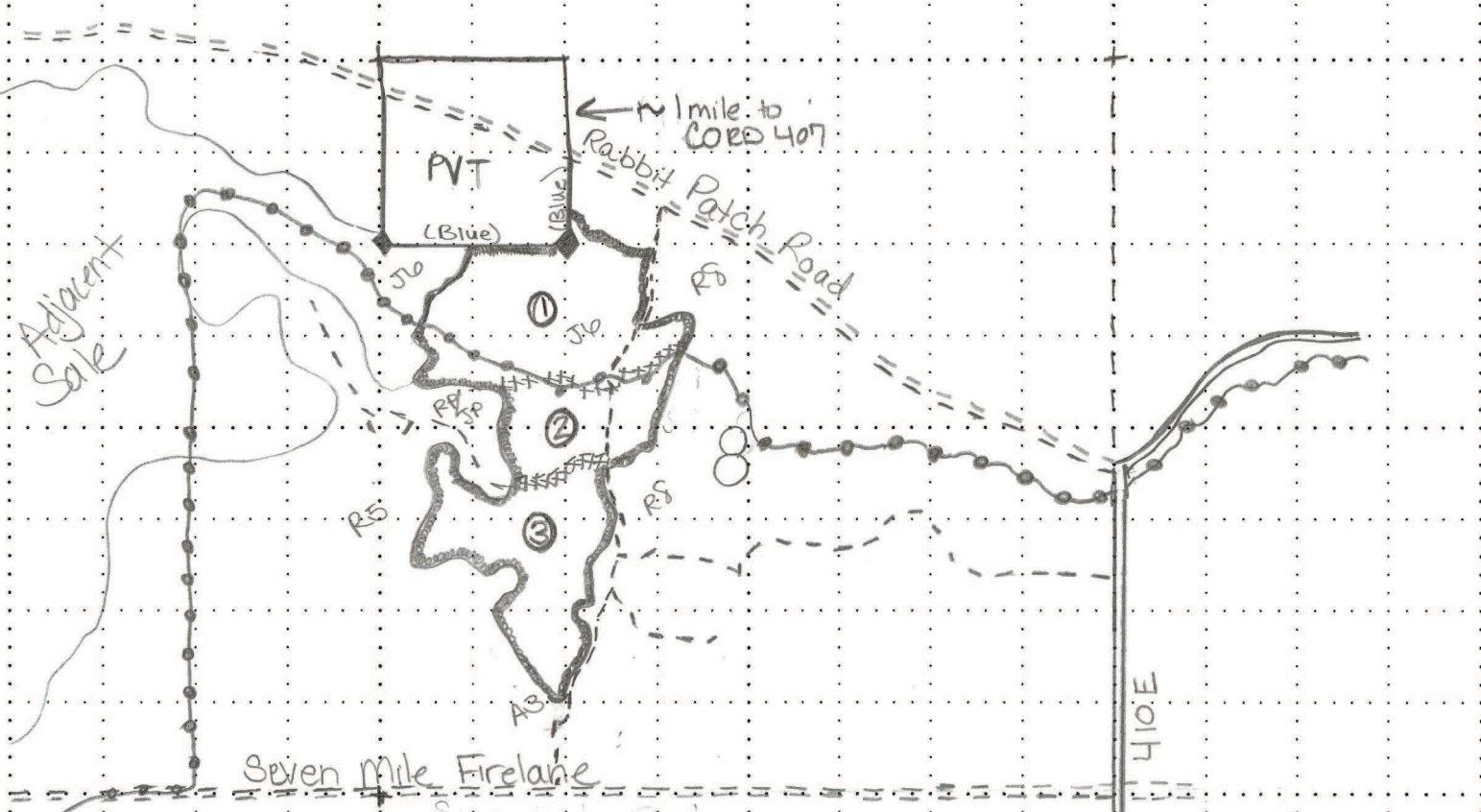
### Cover Type

A = Aspen	G = Grass	O = Oak	U = Upland Brush
B = Paper Birch	H = Hemlock	P = Lowland Poplar	V = Bog or Marsh
C = Cedar	J = Jack Pine	Q = Mixed Swamp Cnfr	W = White Pine
D = Treed Bog	L = Lowland Brush	R = Red Pine	X = Non Stocked
E = Swamp Hdwoods	M = Mpl, Bch, Brch	S = Black Spruce	Z = Water
F = Spruce Fir	N = Marsh	T = Tamarack	

### Density

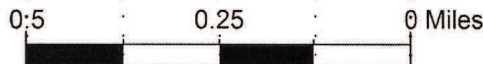
0 = Non Stocked	5 = Pole Timber Medium
1 = Seedling Sapling Poor	6 = Pole Timber Well
2 = Seedling Sapling Medium	7 = Saw Timber Poor
3 = Seedling Sapling Well	8 = Saw Timber Medium
4 = Pole Timber Poor	9 = Saw Timber Well

## BARKING DOG RED PINE 85 Acres



### LEGEND

- Sale Boundary (RED)
- Payment Unit Boundary (Green)
- ORV Trail
- Survey Corner
- Payment Unit #
- Gravel Roads
- Sand Roads
- Forest Roads



Pmt. Unit	Acres
1	38
2	16
3	31



Sale Number	Year
42-004	11

# TIMBER SALE MAP

This information provided by authority of Part 525, 1994 PA 451, as amended.

Forest Management Unit Newberry	County Luce	Mapped By Darling/Irving	Date	Page 1	of 1
Township 49N	Range 10W	Section(s) and Subdivision(s) Sect 7-SWSW Sect 18-NW 1/4, N 1/2 SW 1/4, NWNE			

Cover Type				Density	
A = Aspen	G = Grass	O = Oak	U = Upland Brush	0 = Non Stocked	5 = Pole Timber Medium
B = Paper Birch	H = Hemlock	P = Lowland Poplar	V = Bog or Marsh	1 = Seedling Sapling Poor	6 = Pole Timber Well
C = Cedar	J = Jack Pine	Q = Mixed Swamp Cnfr	W = White Pine	2 = Seedling Sapling Medium	7 = Saw Timber Poor
D = Treed Bog	L = Lowland Brush	R = Red Pine	X = Non Stocked	3 = Seedling Sapling Well	8 = Saw Timber Medium
E = Swamp Hdwoods	M = Mpl, Bch, Brch	S = Black Spruce	Z = Water	4 = Pole Timber Poor	9 = Saw Timber Well
F = Spruce Fir	N = Marsh	T = Tamarack			

Unit	Acres
1	22
2	42
3	23
4	27
5	11

