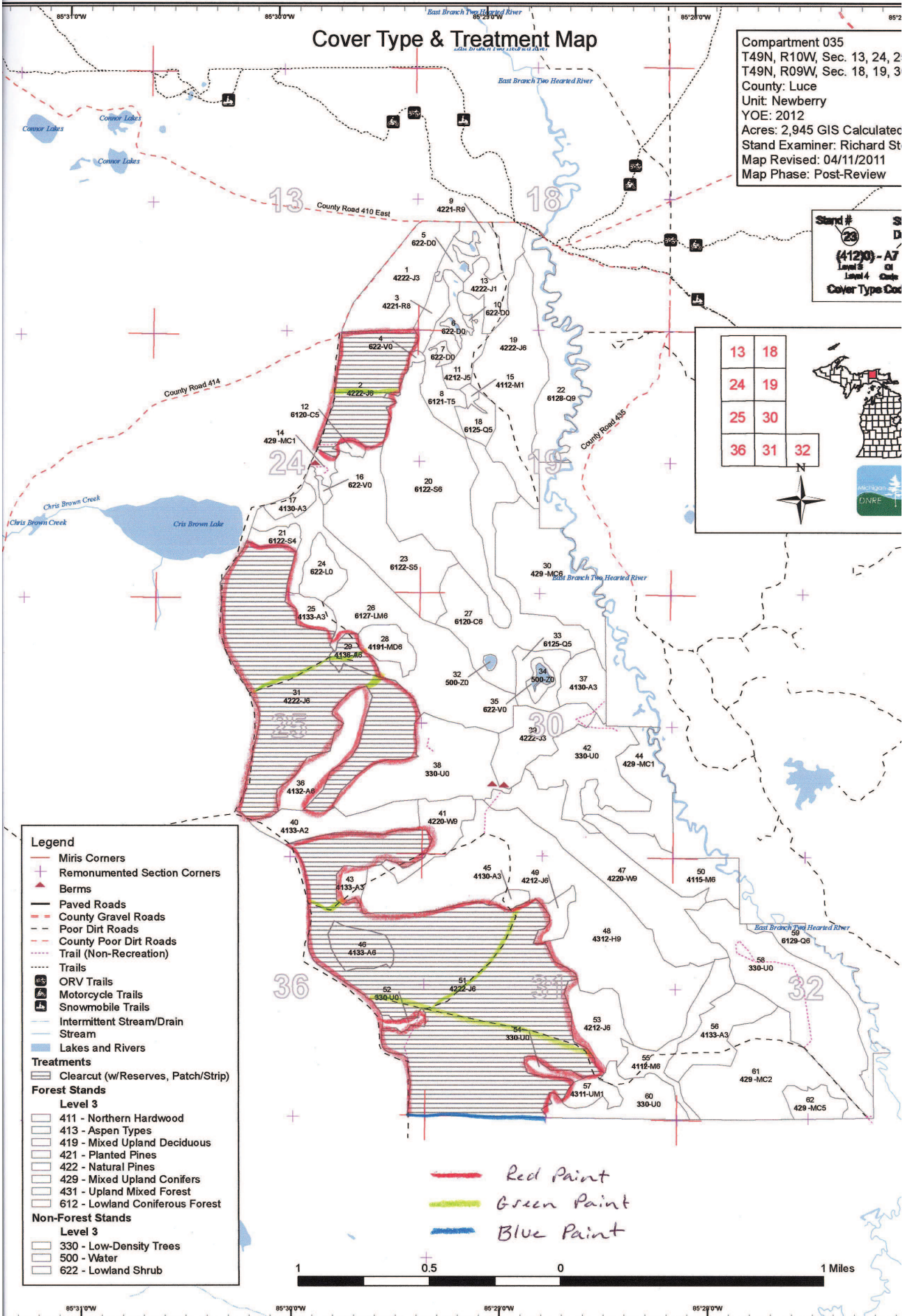


Cover Type & Treatment Map

Compartment 035
 T49N, R10W, Sec. 13, 24, 2
 T49N, R09W, Sec. 18, 19, 3
 County: Luce
 Unit: Newberry
 YOE: 2012
 Acres: 2,945 GIS Calculated
 Stand Examiner: Richard St
 Map Revised: 04/11/2011
 Map Phase: Post-Review

Stand # 20
 (4120) - A7
 Level 3
 Level 4
 Cover Type Code

| | |
|----|----|
| 13 | 18 |
| 24 | 19 |
| 25 | 30 |
| 36 | 31 |
| | 32 |



- Legend**
- Miris Corners
 - + Remonumented Section Corners
 - ▲ Berms
 - Paved Roads
 - - - County Gravel Roads
 - - - Poor Dirt Roads
 - - - County Poor Dirt Roads
 - - - Trail (Non-Recreation)
 - Trails
 - ORV Trails
 - Motorcycle Trails
 - Snowmobile Trails
 - Intermittent Stream/Drain
 - Stream
 - Lakes and Rivers
- Treatments**
- Clearcut (w/Reserves, Patch/Strip)
- Forest Stands**
- Level 3
 - 411 - Northern Hardwood
 - 413 - Aspen Types
 - 419 - Mixed Upland Deciduous
 - 421 - Planted Pines
 - 422 - Natural Pines
 - 429 - Mixed Upland Conifers
 - 431 - Upland Mixed Forest
 - 612 - Lowland Coniferous Forest
- Non-Forest Stands**
- Level 3
 - 330 - Low-Density Trees
 - 500 - Water
 - 622 - Lowland Shrub

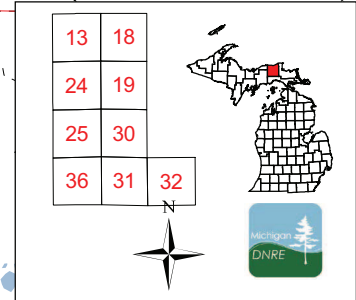
Red Paint
 Green Paint
 Blue Paint



Cover Type & Treatment Map

Compartment 035
 T49N, R10W, Sec. 13, 24, 25, 36
 T49N, R09W, Sec. 18, 19, 30-32
 County: Luce
 Unit: Newberry
 YOE: 2012
 Acres: 2,945 GIS Calculated
 Stand Examiner: Richard Stevenson
 Map Revised: 04/11/2011
 Map Phase: Post-Review

Stand #
 (23)
 Stocking
 Density
 (4120) - A7
 Level 3
 Level 4
 Code
 Cover Type Code



Legend

- Miris Corners
- Remonumented Section Corners
- Berms
- Paved Roads
- County Gravel Roads
- Poor Dirt Roads
- County Poor Dirt Roads
- Trail (Non-Recreation)
- Trails
- ORV Trails
- Motorcycle Trails
- Snowmobile Trails
- Intermittent Stream/Drain
- Stream
- Lakes and Rivers

Treatments

- Clearcut (w/Reserves, Patch/Strip)

Forest Stands

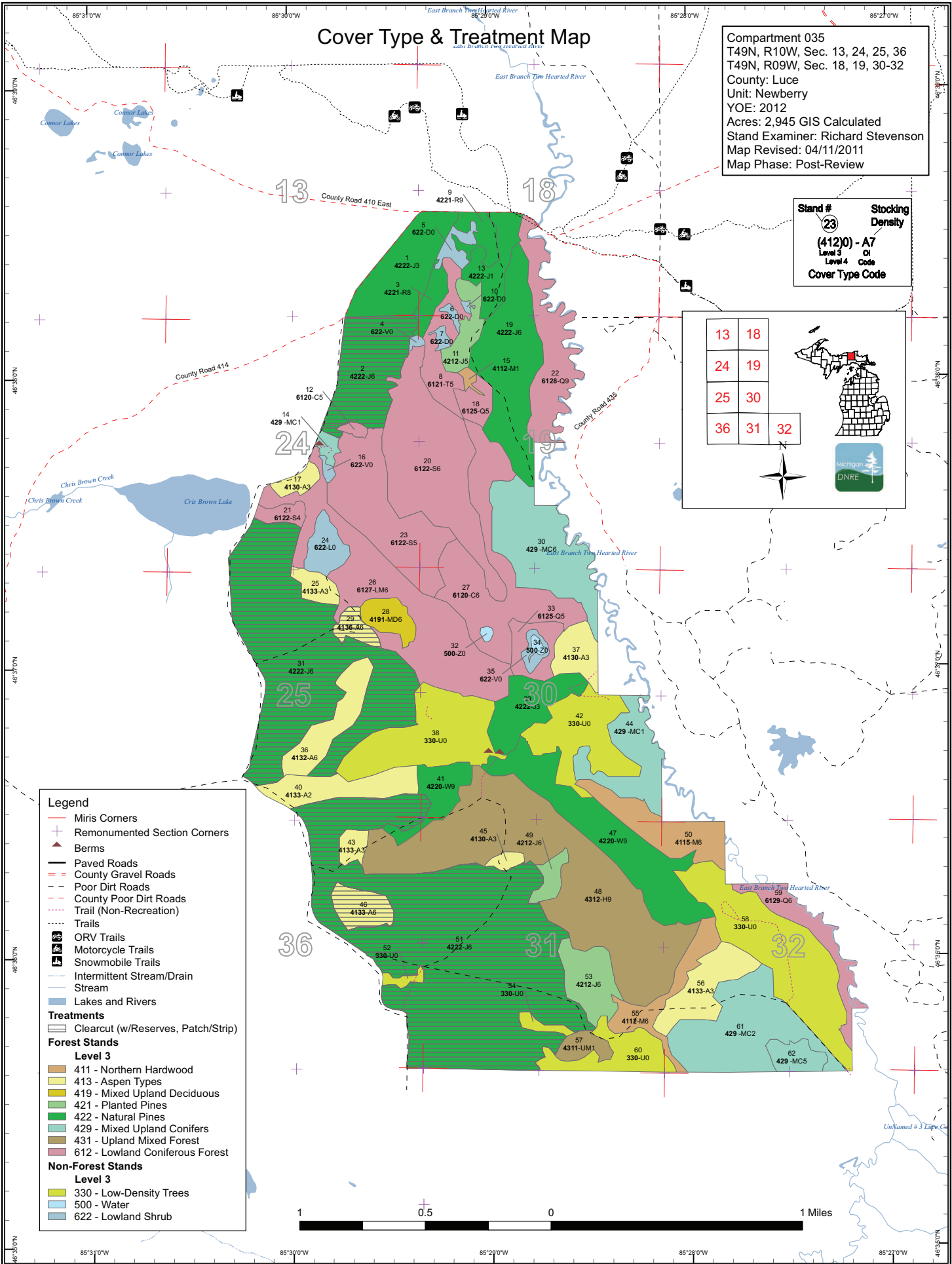
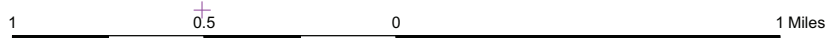
Level 3

- 411 - Northern Hardwood
- 413 - Aspen Types
- 419 - Mixed Upland Deciduous
- 421 - Planted Pines
- 422 - Natural Pines
- 429 - Mixed Upland Conifers
- 431 - Upland Mixed Forest
- 612 - Lowland Coniferous Forest

Non-Forest Stands

Level 3

- 330 - Low-Density Trees
- 500 - Water
- 622 - Lowland Shrub



Stand Boundary Map

Compartment 035
 T49N, R10W, Sec. 13, 24, 25, 36
 T49N, R09W, Sec. 18, 19, 30-32
 County: Luce
 Unit: Newberry
 YOE: 2012
 Acres: 2,945 GIS Calculated
 Stand Examiner: Richard Stevenson
 Map Revised: 04/11/2011
 Map Phase: Post-Review

Stand #
 23
Stocking Density
 (4120) - A7
Level 3
 Level 4
Code
Cover Type Code

| | |
|----|----|
| 13 | 18 |
| 24 | 19 |
| 25 | 30 |
| 36 | 31 |
| | 32 |



Legend

- Miris Corners
- + Remonumented Section Corners
- + Berms
- Paved Roads
- - - County Gravel Roads
- - - Poor Dirt Roads
- - - County Poor Dirt Roads
- - - Trail (Non-Recreation)
- - - Trails
- ORV Trails
- Motorcycle Trails
- Snowmobile Trails
- Intermittent Stream/Drain
- Stream
- Stand boundaries

Forest Stands

- Level 3**
- 411 - Northern Hardwood
 - 413 - Aspen Types
 - 419 - Mixed Upland Deciduous
 - 421 - Planted Pines
 - 422 - Natural Pines
 - 429 - Mixed Upland Conifers
 - 431 - Upland Mixed Forest
 - 612 - Lowland Coniferous Forest

Non-Forest Stands

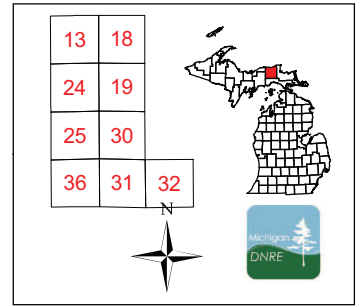
- Level 3**
- 330 - Low-Density Trees
 - 500 - Water
 - 622 - Lowland Shrub

0.5 0 1 Miles

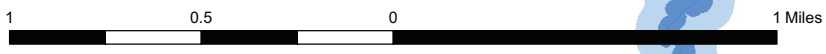
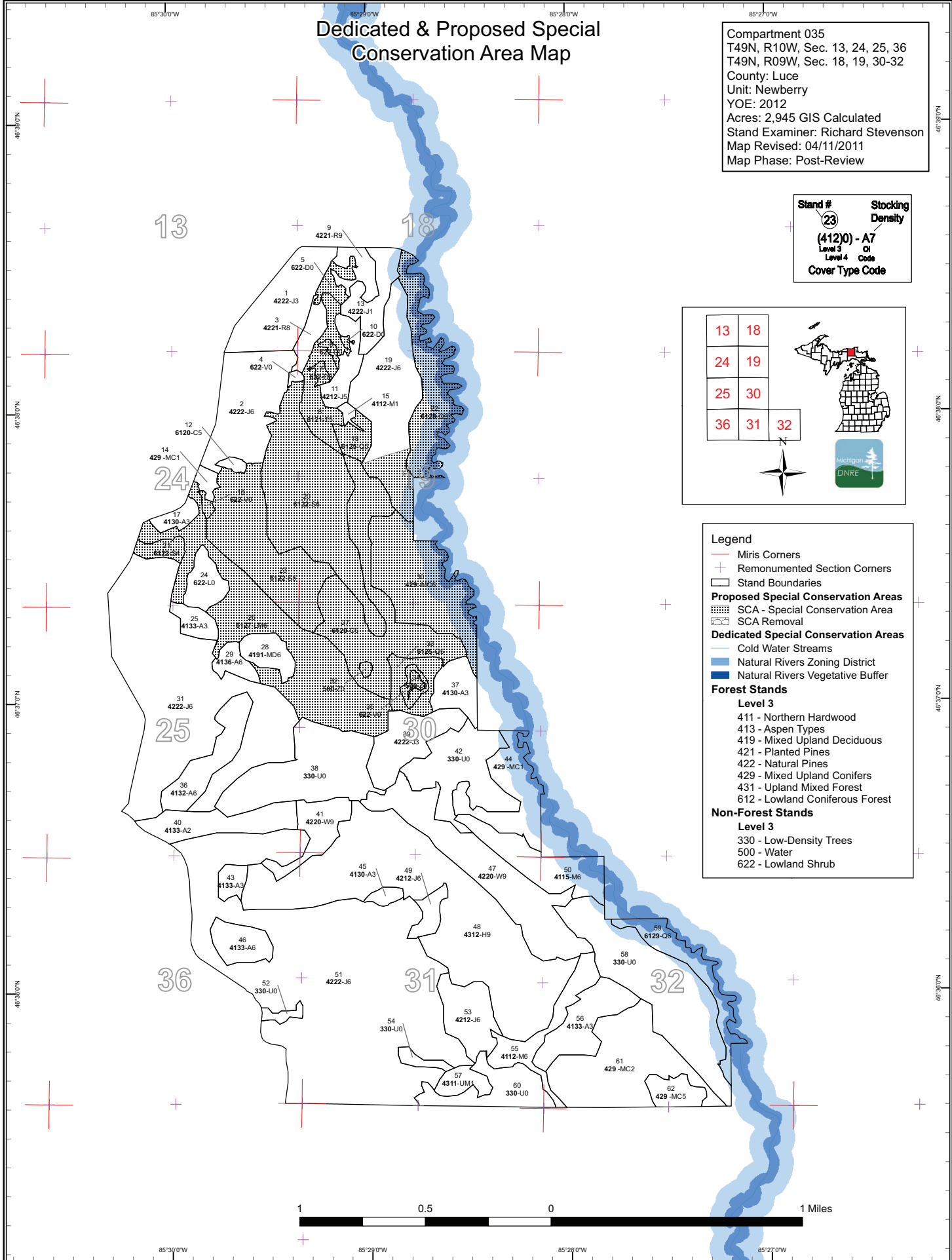
Dedicated & Proposed Special Conservation Area Map

Compartment 035
 T49N, R10W, Sec. 13, 24, 25, 36
 T49N, R09W, Sec. 18, 19, 30-32
 County: Luce
 Unit: Newberry
 YOE: 2012
 Acres: 2,945 GIS Calculated
 Stand Examiner: Richard Stevenson
 Map Revised: 04/11/2011
 Map Phase: Post-Review

Stand # Stocking Density
 (23) (412)0) - A7
 Level 3 Of
 Level 4 Code
 Cover Type Code



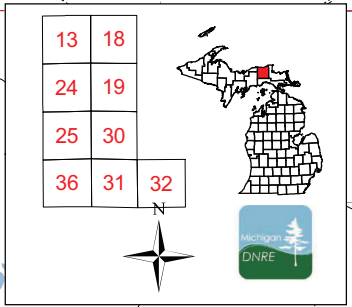
- Legend**
- Miris Corners
 - + Remonumented Section Corners
 - Stand Boundaries
 - Proposed Special Conservation Areas**
 - ▨ SCA - Special Conservation Area
 - ▩ SCA Removal
 - Dedicated Special Conservation Areas**
 - Cold Water Streams
 - Natural Rivers Zoning District
 - Natural Rivers Vegetative Buffer
 - Forest Stands**
 - Level 3**
 - 411 - Northern Hardwood
 - 413 - Aspen Types
 - 419 - Mixed Upland Deciduous
 - 421 - Planted Pines
 - 422 - Natural Pines
 - 429 - Mixed Upland Conifers
 - 431 - Upland Mixed Forest
 - 612 - Lowland Coniferous Forest
 - Non-Forest Stands**
 - Level 3**
 - 330 - Low-Density Trees
 - 500 - Water
 - 622 - Lowland Shrub



Cover Type & Treatment Map

Compartment 035
 T49N, R10W, Sec. 13, 24, 25, 36
 T49N, R09W, Sec. 18, 19, 30-32
 County: Luce
 Unit: Newberry
 YOE: 2012
 Acres: 2,945 GIS Calculated
 Stand Examiner: Richard Stevenson
 Map Revised: 04/11/2011
 Map Phase: Post-Review

Stand #
 23
Stocking Density
 (412)0 - A7
 Level 3
 Level 4
Cover Type Code



- Legend**
- Miris Corners
 - + Remonumented Section Corners
 - Berms
 - Paved Roads
 - - - County Gravel Roads
 - - - Poor Dirt Roads
 - - - County Poor Dirt Roads
 - - - Trail (Non-Recreation)
 - Trails
 - ORV Trails
 - Motorcycle Trails
 - Snowmobile Trails
 - Intermittent Stream/Drain
 - Stream
 - Lakes and Rivers
- Treatments**
- Clearcut (w/Reserves, Patch/Strip)
- Forest Stands**
- Level 3**
- 411 - Northern Hardwood
 - 413 - Aspen Types
 - 419 - Mixed Upland Deciduous
 - 421 - Planted Pines
 - 422 - Natural Pines
 - 429 - Mixed Upland Conifers
 - 431 - Upland Mixed Forest
 - 612 - Lowland Coniferous Forest
- Non-Forest Stands**
- Level 3**
- 330 - Low-Density Trees
 - 500 - Water
 - 622 - Lowland Shrub

