

TIMBER SALE MAP

This information provided by authority of Part 525 of Act 451, PA 1994, as amended.

Sale Number	Year
73-001-13-01	2013

Forest Management Unit	County	Marked & Cruised By	Date	Page of
GLADWIN UNIT	CLARE	Mapped By T. GALLAGHER	09/24/2012	1 2
Township	Range	Section(s) and Subdivision(s)	Timber Sale Administrator: Tim Gallagher	
T20N	R03W	SECTION: 18, 19, 30 & 33, SUBDIVISIONS: Various.	Scale: [...1 inch.....] = 1/4 mile	

Cover Type

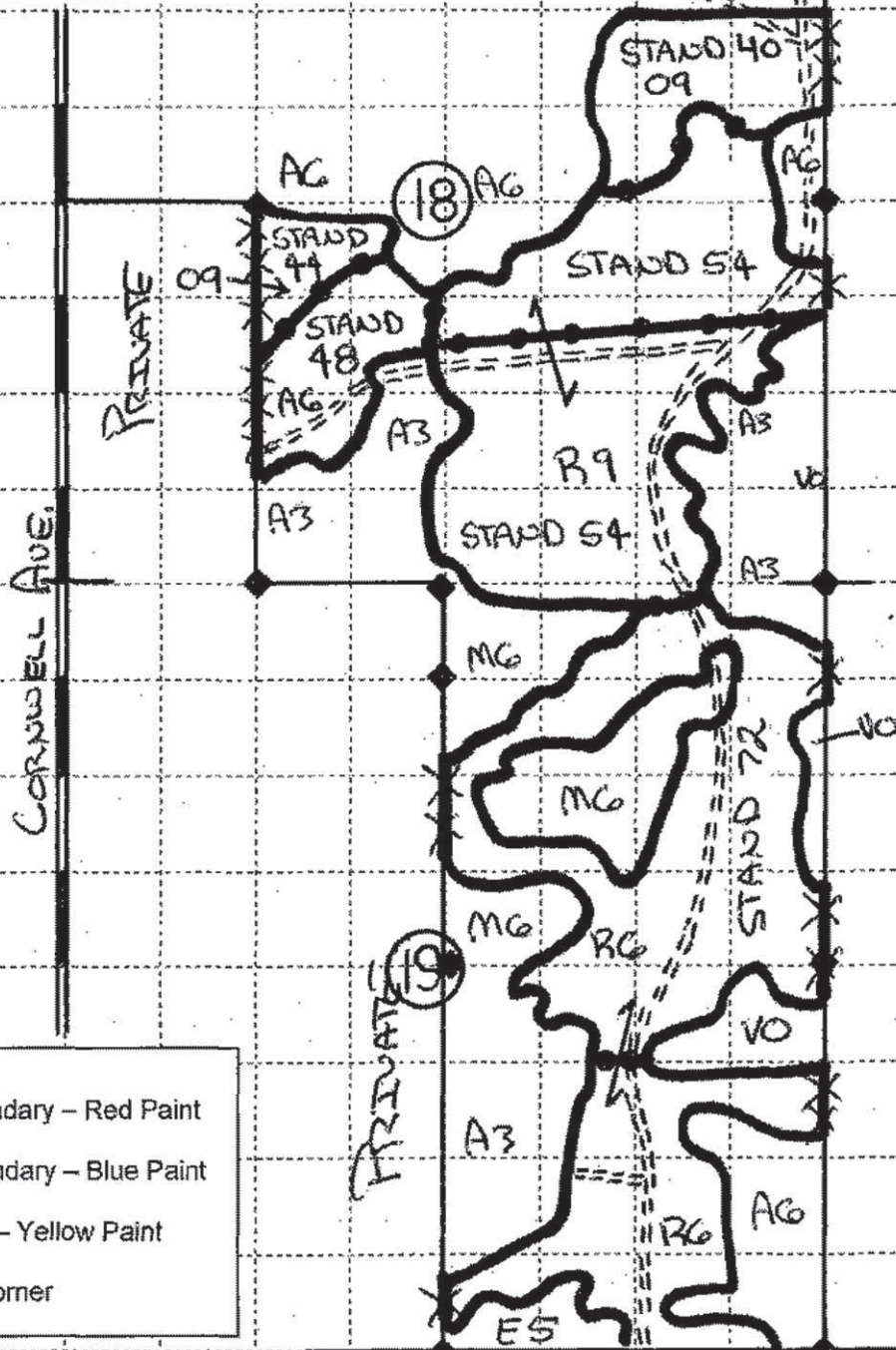
A = Aspen	G = Grass	O = Oak	U = Upland Brush
B = Paper Birch	H = Hemlock	P = Lowland Poplar	V = Bog or Marsh
C = Cedar	J = Jack Pine	Q = Mixed Swamp Cnfr	W = White Pine
D = Tread Bog	L = Lowland Brush	R = Red Pine	X = Non Stocked
E = Swamp Hdwoods	M = Mpl, Bch, Brch	S = Black Spruce	Z = Water
F = Spruce Fir	N = Marsh	T = Tamarack	

Density

0 = Non Stocked	6 = Pole Timber Medium
1 = Seedling Sapling Poor	7 = Saw Timber Poor
2 = Seedling Sapling Medium	8 = Saw Timber Medium
3 = Seedling Sapling Well	9 = Saw Timber Well
4 = Pole Timber Poor	

CORNWELL HARVEST:

Clare County - Acres: 529.79 (estimate)
Compartment 2



OI ACRES:
(Estimate)

Stand 40 - 32.0
Stand 44 - 11.9
Stand 48 - 26.8
Stand 54 - 131.3
Stand 72 - 160.4
Stand 79 - 13.4
Stand 97 - 81.8
Stand 101 - 72.1

KEY:

- Sale Boundary - Red Paint
- Sale Boundary - Blue Paint
- Unit Line - Yellow Paint
- Survey Corner



TIMBER SALE MAP

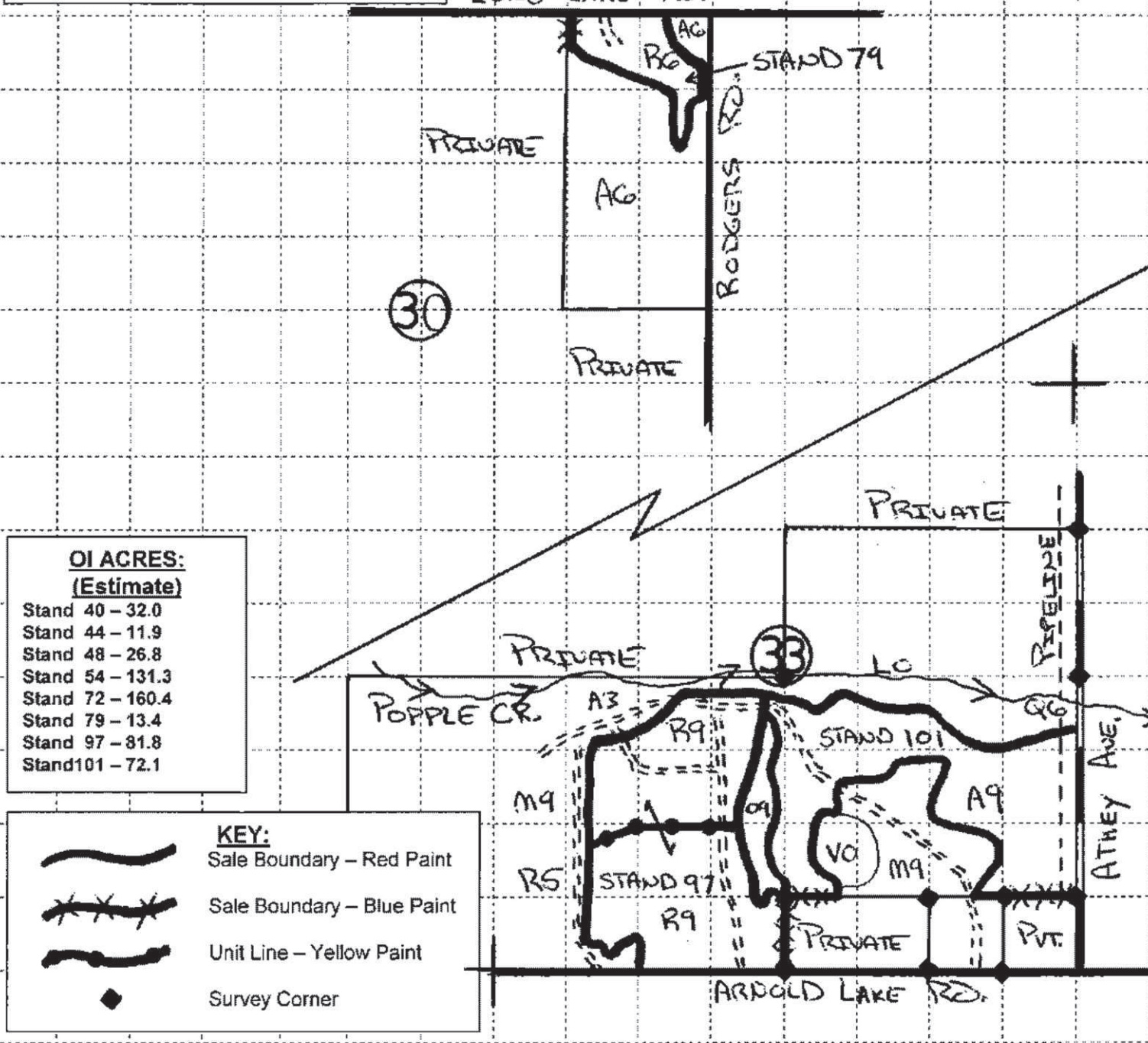
This information provided by authority of Part 525 of Act 451, PA 1904, as amended.

Sale Number	Year
73-001-13-01	2013

Forest Management Unit GLADWIN UNIT	County CLARE	Marked & Cruised By Mapped By T. GALLAGHER	Date 09/24/2012	Page of 2 2
Township T20N	Range R03W	Section(s) and Subdivision(s) SECTION: 18, 19, 30 & 33. SUBDIVISIONS: Various.	Timber Sale Administrator: Tim Gallagher Scale: [1 inch.....] = 1/4 mile	

Cover Type				Density	
A = Aspen	G = Grass	O = Oak	U = Upland Brush	0 = Non Stocked	5 = Pole Timber Medium
B = Paper Birch	H = Hemlock	P = Lowland Poplar	V = Bog or Marsh	1 = Seedling Sapling Poor	6 = Pole Timber Well
C = Cedar	J = Jack Pine	Q = Mixed Swamp Cnfr	W = White Pine	2 = Seedling Sapling Medium	7 = Saw Timber Poor
D = Tread Bog	L = Lowland Brush	R = Red Pine	X = Non Stocked	3 = Seedling Sapling Well	8 = Saw Timber Medium
E = Swamp Hdwoods	M = Mpl, Bch, Brch	S = Black Spruce	Z = Water	4 = Pole Timber Poor	9 = Saw Timber Well
F = Spruce Fir	N = Marsh	T = Tamarack			

CORNWELL HARVEST:
Clare County - Acres: 529.79 (estimate)
Compartment 2



OI ACRES:
(Estimate)

Stand 40 - 32.0
Stand 44 - 11.9
Stand 48 - 26.8
Stand 54 - 131.3
Stand 72 - 160.4
Stand 79 - 13.4
Stand 97 - 81.8
Stand 101 - 72.1

KEY:

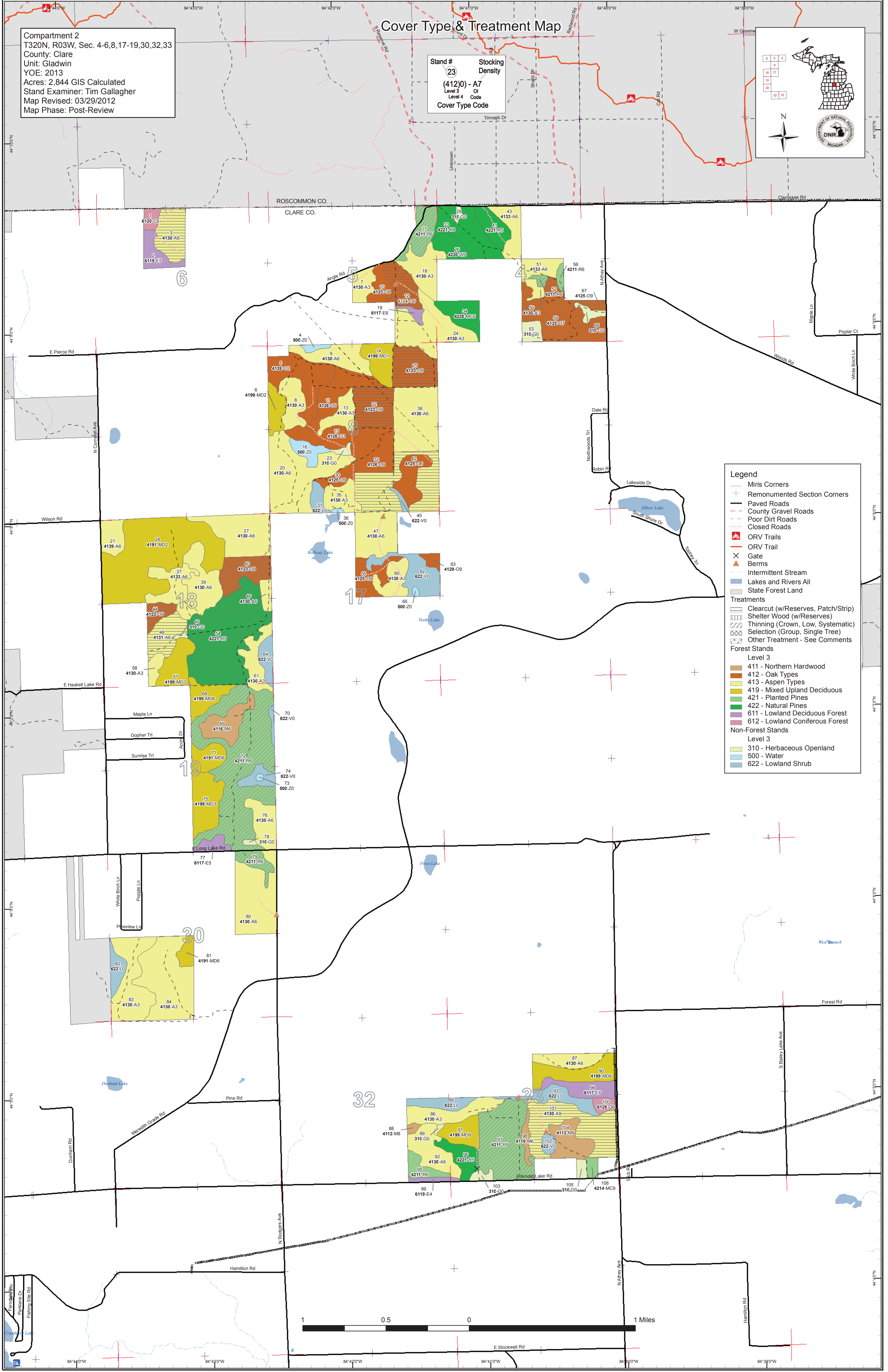
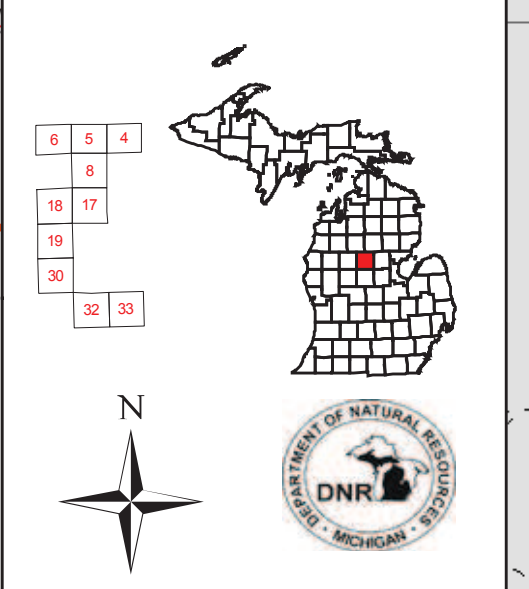
	Sale Boundary - Red Paint
	Sale Boundary - Blue Paint
	Unit Line - Yellow Paint
	Survey Corner

Cover Type & Treatment Map

Compartment 2
 T320N, R03W, Sec. 4-6,8,17-19,30,32,33
 County: Clare
 Unit: Gladwin
 YOY: 2013
 Acres: 2,844 GIS Calculated
 Stand Examiner: Tim Gallagher
 Map Revised: 03/29/2012
 Map Phase: Post-Review

Stand #
 (412)0 - A7
 Level 3
 Level 4
 Cover Type
 Code

Stocking
 Density



Legend

- Miris Corners
- Remounted Section Corners
- Paved Roads
- County Gravel Roads
- Poor Dirt Roads
- Closed Roads
- ORV Trails
- ORV Trail
- Gate
- Berms
- Intermittent Stream
- Lakes and Rivers All
- State Forest Land

Treatments

- Clearcut (w/Reserves, Patch/Strip)
- Shelter Wood (w/Reserves)
- Thinning (Crown, Low, Systematic)
- Selection (Group, Single Tree)
- Other Treatment - See Comments

Forest Stands

Level 3

- 411 - Northern Hardwood
- 412 - Oak Types
- 413 - Aspen Types
- 419 - Mixed Upland Deciduous
- 421 - Planted Pines
- 422 - Natural Pines
- 611 - Lowland Deciduous Forest
- 612 - Lowland Coniferous Forest

Non-Forest Stands

Level 3

- 310 - Herbaceous Openland
- 500 - Water
- 622 - Lowland Shrub



Ferndale Ln
 Parklane Dr
 Fishing Site Rd

84°40'0"W 84°40'0"W 84°40'0"W 84°40'0"W 84°40'0"W