



# TIMBER SALE MAP

003

2013

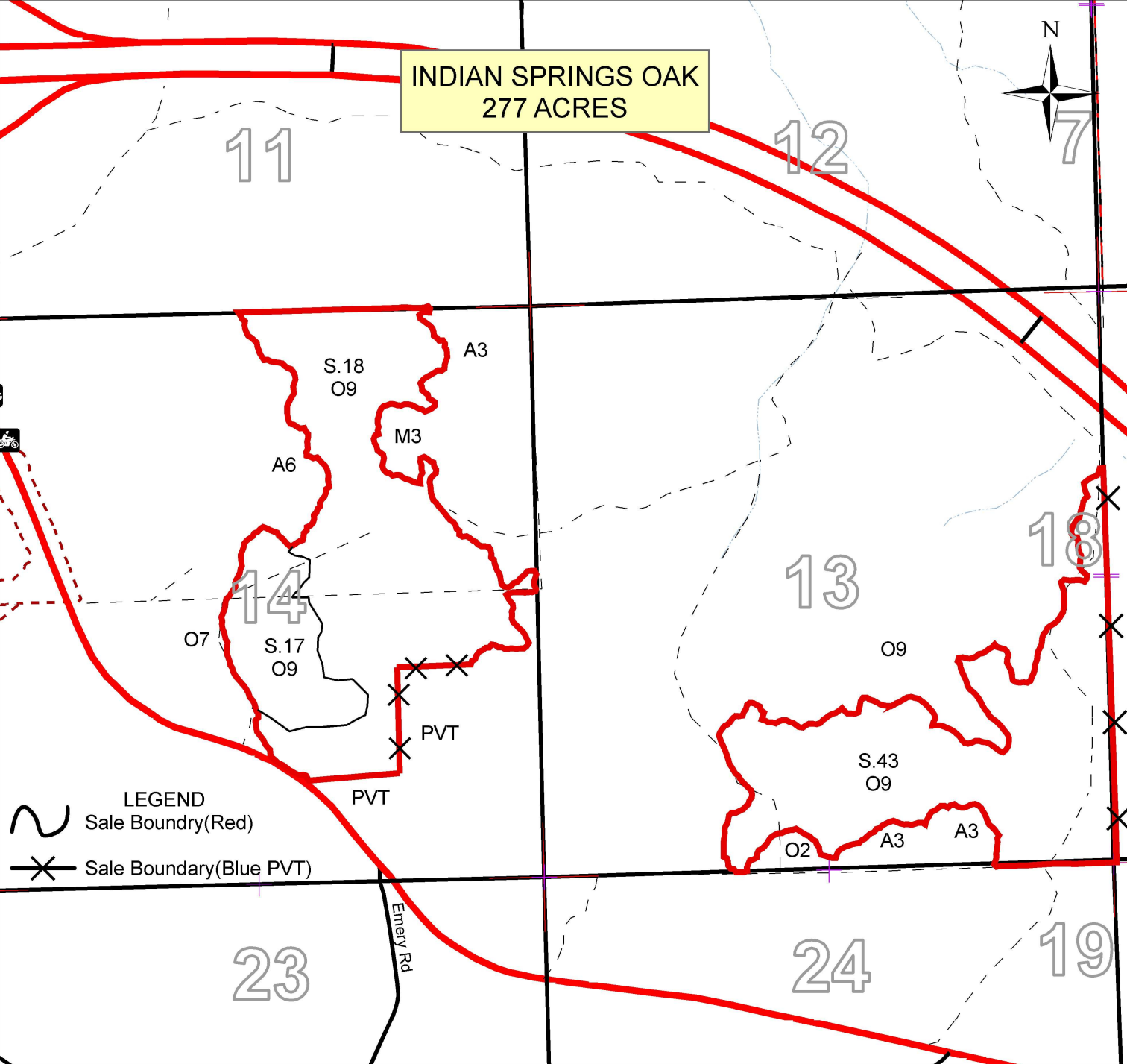
*This information provided by authority of Part 525, 1994 PA 451, as amended.*

Forest Management Unit <b>Roscommon</b>	County <b>Roscommon</b>	Mapped By <b>Lewicki</b>	Date <b>11/28/12</b>	Page <b>1</b>	of <b>1</b>
Township <b>T22N</b>	Range <b>R01W</b>	Cruised By <b>Lewicki</b>	Section(s) and Subdivision(s) <b>S.13-SE;E1/2SW;SENE S.14-NE;W1/2SE;NESE;NESW</b>		

1:15,840

Cover Type				Density		
A = Aspen	G = Grass	O = Oak	U = Upland Brush	0 = Non Stocked	5 = Pole Timber Medium	
B = Paper Birch	H = Hemlock	P = Lowland Poplar	V = Bog or Marsh	1 = Seedling Sapling Poor	6 = Pole Timber Well	
C = Cedar	J = Jack Pine	Q = Mixed Swamp Cnfr	W = White Pine	2 = Seedling Sapling Medium	7 = Saw Timber Poor	
D = Treed Bog	L = Lowland Brush	R = Red Pine	X = Non Stocked	3 = Seedling Sapling Well	8 = Saw Timber Medium	
E = Swamp Hdwoods	M = Mpl, Bch, Brch	S = Black Spruce	Z = Water	4 = Pole Timber Poor	9 = Saw Timber Well	
F = Spruce Fir	N = Marsh	T = Tamarack				

**INDIAN SPRINGS OAK  
277 ACRES**



**LEGEND**  
 Sale Boundry(Red)  
 Sale Boundary(Blue PVT)

