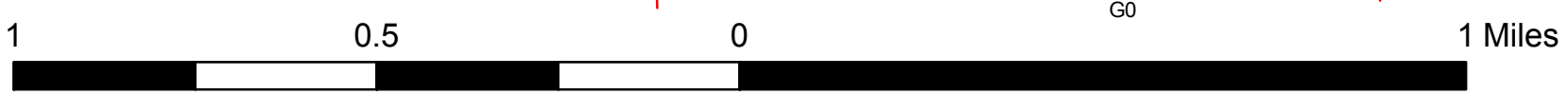
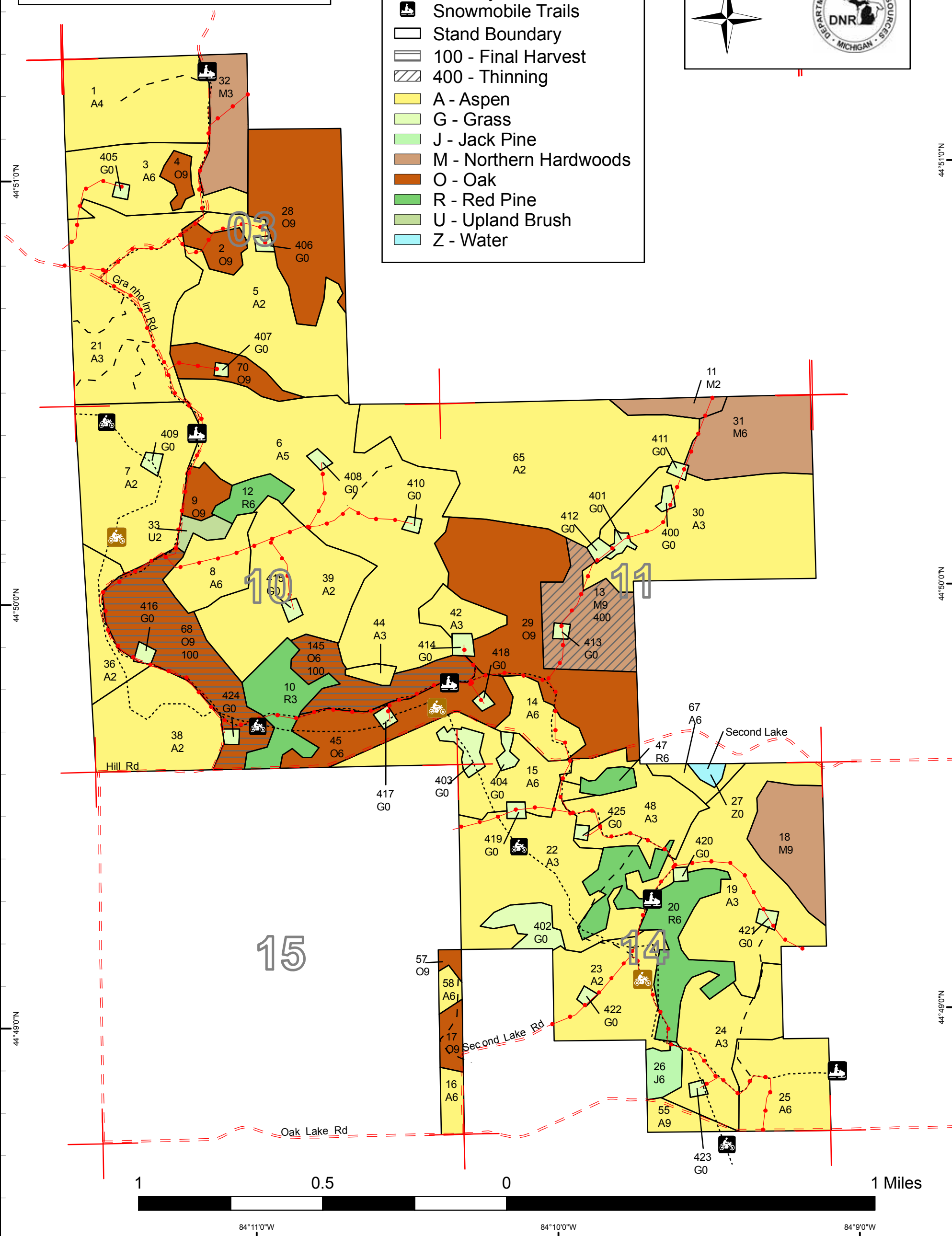
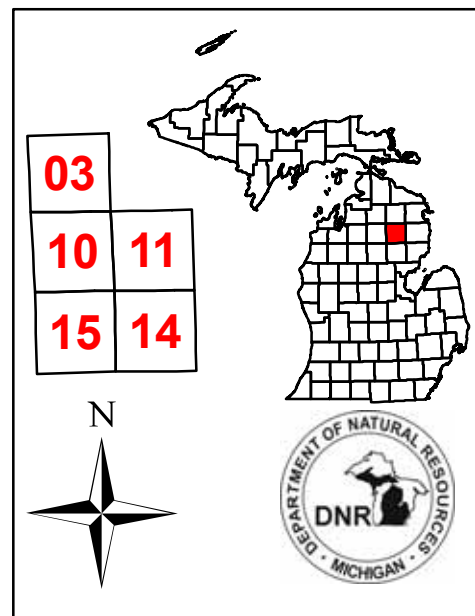


Covertypes & Treatment Map

Compartment 25
 T28N, R02E, Sec. 03, 10, 11, 14, 15
 County: Oscoda
 Unit: Grayling
 YOE: 2011
 Acres: 2,038 GIS Calculated
 Stand Examiner: Lucas Merrick
 Map Revised: 12/17/2009
 Map Phase: Post-review

Legend

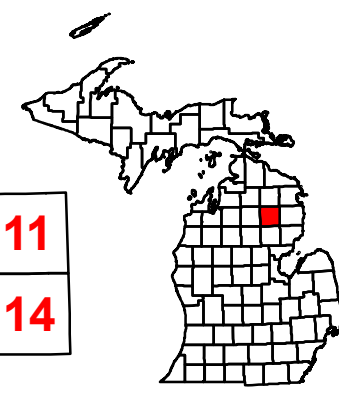
- Miris Corners
- - County Gravel Roads
- - Poor Dirt Roads
- Pipelines
- Trails
- MCCCT Trails
- Motorcycle Trails
- Snowmobile Trails
- Stand Boundary
- 100 - Final Harvest
- 400 - Thinning
- A - Aspen
- G - Grass
- J - Jack Pine
- M - Northern Hardwoods
- O - Oak
- R - Red Pine
- U - Upland Brush
- Z - Water





Stand Boundary Map

Compartment 25
 T28N, R02E, Sec. 03, 10, 11, 14, 15
 County: Oscoda
 Unit: Grayling
 YOE: 2011
 Acres: 2,038 GIS Calculated
 Stand Examiner: Lucas Merrick
 Map Revised: 12/17/2009
 Map Phase: Post-review




03	
10	11
15	14

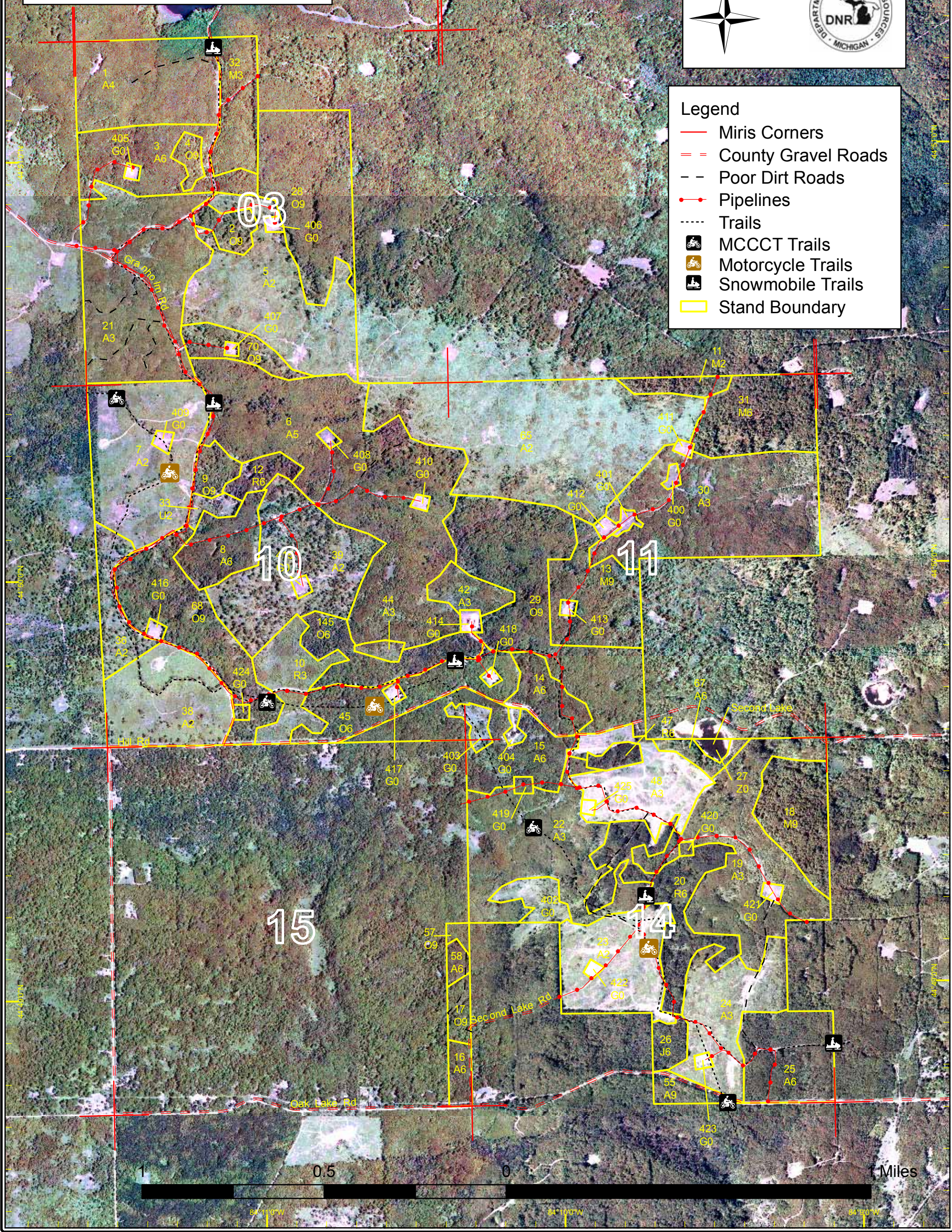


N

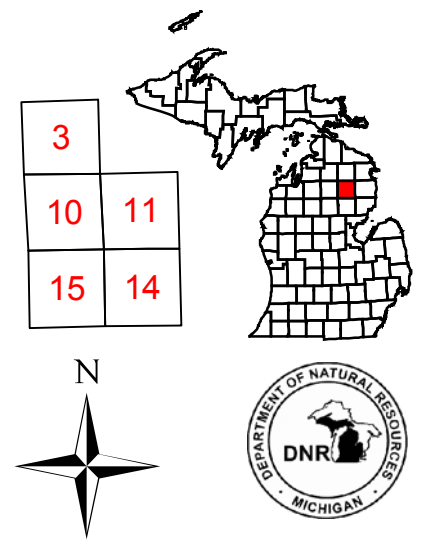
Legend

- Miris Corners
- = County Gravel Roads
- - Poor Dirt Roads
- Pipelines
- - - Trails
-  MCCCT Trails
-  Motorcycle Trails
-  Snowmobile Trails
- Stand Boundary



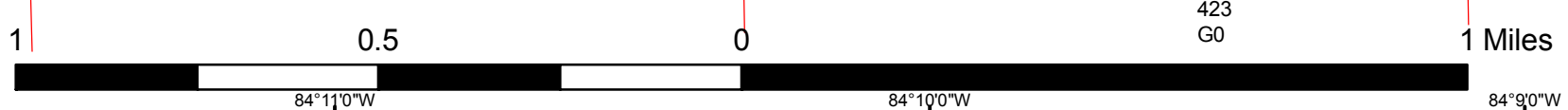
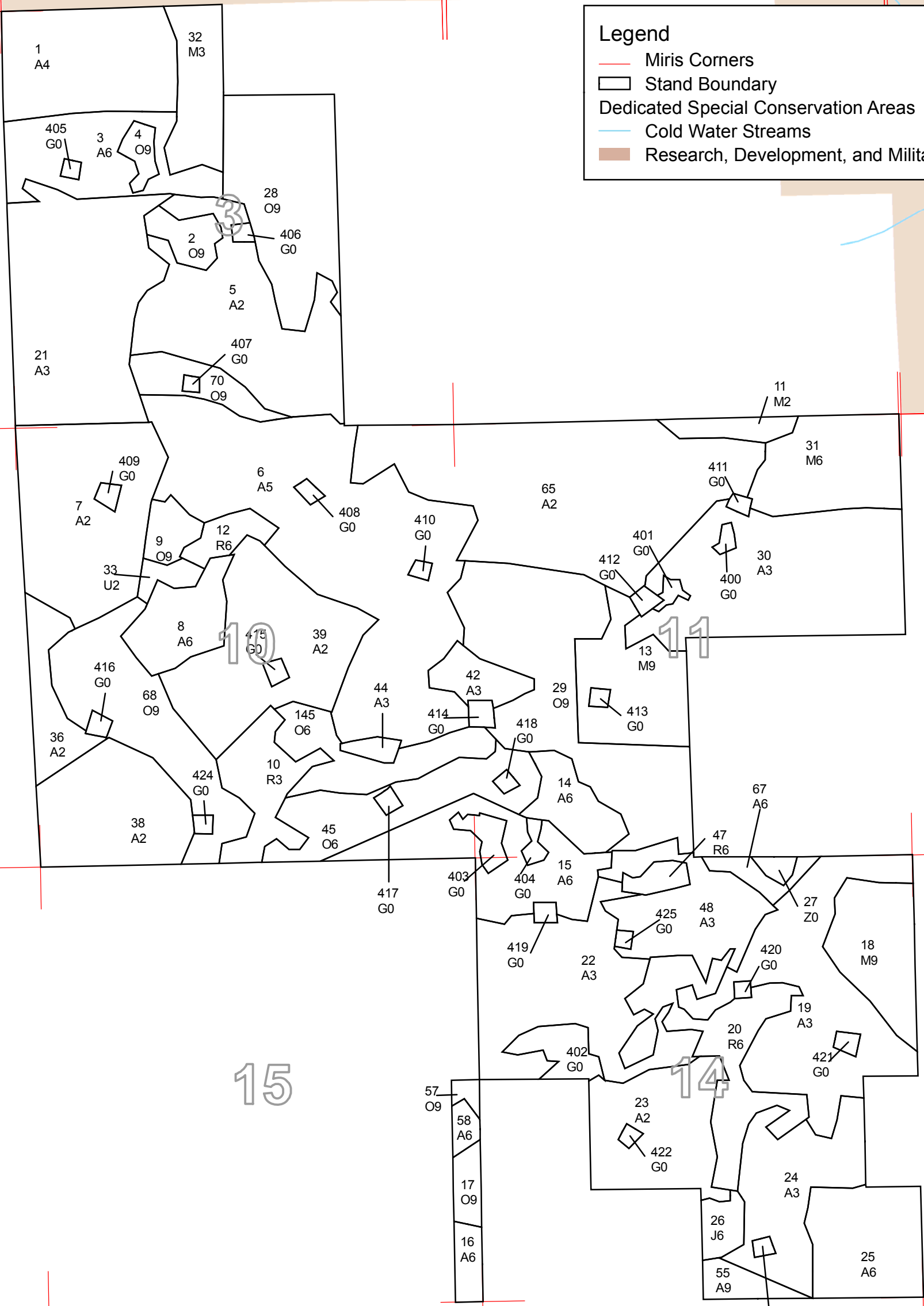
Dedicated & Proposed Special Conservation Area Map

Compartment 25
 T28N, R02E, Sec. 03, 10, 11, 14, 15
 County: Oscoda
 Unit: Grayling
 YOE: 2011
 Acres: 2,038 GIS Calculated
 Stand Examiner: Lucas Merrick
 Map Revised: 12/17/2009
 Map Phase: Post-review



Legend

- Miris Corners
- Stand Boundary
- Dedicated Special Conservation Areas
- Cold Water Streams
- Research, Development, and Military Lands





DEDICATED CONSERVATION AREA DETAILS

* This is a list of Dedicated Biodiversity Areas for this compartment along with a 1/4 mile buffer surrounding the compartment. Refer to Dedicated Conservation Area Map for areas that the below listed Conservation Areas are located.

ERA = Ecological Reference Area
HCVA = High Conservation Value Area
SCA = Special Conservation Area

Conservation Area	Type	Description
SCA	Archaeological Site	An aquatic or terrestrial area of the State that contains physical remains of human occupation. These are sites of cultural and historical significance that may occur upon terrestrial areas and Great Lakes bottomlands. They include thousands of Native American settlements and burial sites, as well as French and British outposts, nineteenth century logging camps, mines and homesteads. Beneath the waters of the Great Lakes, there are shipwrecks and other remains documenting the maritime trade. Such sites may be identified by Natural heritage data from the State Historic Preservation Office. Proposed treatments in this compartment will be implemented in such a manner as to maintain the integrity of these sites. Due to the sensitive nature of this information, no further detail about location is available.
SCA	Research and Military Areas	These areas provide facilities and lands specifically dedicated for research, or other purposes. They include the 5,847 acre Forest Fire Experiment Station, the 12,000 acre Houghton Lake Wildlife Research Area, the Beaver Islands Archipelago Wildlife Research Area (that includes most of Garden Island, all of High and Hog Islands, all state owned land on Beaver, South Fox and North Fox Islands), the Cusino Wildlife Research Area, the 3,000 acre Hunt Creek Fisheries Research Station, the 125 acre Wyman Nursery, and over 144,000 acres of Military Lands.