



**Gwinn Forest Management Unit
Compartment Review Presentation
Compartment 37 Entry Year: 2011
Compartment Acreage: 1163 County: Marquette**

Revision Date: 8/13/2009

Stand Examiner: John M. Koski

Legal Description: T45N R26W, Sec. 20,29,32, Marquette County

RMU (if applicable):

Management Goals: Strive to perpetuate the component of maple, aspen, and dry mesic conifers where they now occur.

Soil and Topography: Ranges from level swamps and wetland drainages to upland ridges.

Ownership Patterns, Development, and Land Use in and Around the Compartment: Private ownership around the lakes, but state land located on all sides. Bass Lake State Forest Campground located in Sec. 29.

Unique, Natural Features:

Archeological, Historical, and Cultural Features: none

Special Management Designations or Considerations

Watershed and Fisheries Considerations:

Wildlife Habitat Considerations:

Mineral Resource and Development Concerns and/or Restrictions: Surface sediments consist of coarse-textured till. The glacial drift thickness varies between 100 and 200 feet. The Precambrian Archean Granite/Gneiss subcrops below the glacial drift. These rocks could have potential as dimension stone. A gravel pit is located one mile to the east and there should be potential on the uplands. Abandoned iron mines

are located six miles to the east. Most of this Compartment was previously leased for metallic exploration. There is no economic oil and gas production in the UP.

Vehicle Access: Very good to all of the compartment via blacktop, gravel and two track roads. Bass Lake Motorcycle Trail runs through Sec. 32.

Survey Needs: none

Recreational Facilities and Opportunities: Camping, fishing, hunting, cycling

Fire Protection: Within the Gwinn Unit protection area.

Additional Compartment Information:

- **The following 5 reports from the Operations Inventory System (OIPC) are attached:**
 - ◆ **Cover Type by Age Class**
 - ◆ **Cover Type by Management Objective**
 - ◆ **Compartment Volume Summary**
 - ◆ **Proposed Treatments – No Limiting Factors**
 - ◆ **Proposed Treatments – With Limiting Factors**

- **The following information is displayed, where pertinent, on the attached compartment maps:**
 - ◆ **Base feature information, stand numbers, cover types**
 - ◆ **Proposed treatments**
 - ◆ **Proposed road access system**
 - ◆ **Suggested potential old growth**

8/31/2009 1:43:38 PM

Michigan Department of Natural Resources - Operations Inventory System
Individual Compartment Report

ESCANABA RIVER STATE FOREST

GWINN FOREST MGT UNIT

MARQUETTE COUNTY

COMPARTMENT: 37

Table 3

(acres shown in boxes)

STAND AGE CLASS

COVER TYPE	Not Coded	0-9	10-19	20-29	30-39	40-49	50-59	60-69	70-79	80-89	90-99	100-109	110-119	120-129	130-139	140-149	150-159	All Aged	Total
Aspen		118	53	177	106			44	36	1									535
Black Spruce									28			14							42
Bog or Marsh	86																		86
Grass	38																		38
Lowlnd Brush	3																		3
Mx Swmp Cnfr									30			29							59
Non Stocked	3																		3
Paper Birch								17	5										22
Red Pine			17															216	233
Spruce Fir					1														1
Upland Brush	12																		12
Upland Hdwds																		103	103
Water	9																		9
White Pine									20										20
Total	151	118	70	177	107			61	119	1		43						319	1163

8/31/2009 1:43:58 PM

Michigan Department of Natural Resources - Operations Inventory System
Individual Compartment Report

ESCANABA RIVER STATE FOREST

GWINN FOREST MGT UNIT

MARQUETTE COUNTY

COMPARTMENT: 37

Table 3A

(acres shown in boxes)

MANAGEMENT OBJECTIVE TYPE

COVER TYPE	A	S	V	C	G	H	J	I	L	P	N	Q	X	O	B	R	K	Y	F	E	T	D	U	M	Z	W	Total	
A Aspen	535																										535	
S Black Spruce		42																									42	
V Bog or Marsh			86																								86	
G Grass					38																						38	
L Lowlnd Brush									3																		3	
Q Mx Swmp Cnfr												59															59	
X Non Stocked													3														3	
B Paper Birch	17														5												22	
R Red Pine																233											233	
F Spruce Fir																			1								1	
U Upland Brush																								12			12	
M Upland Hdwds																								103			103	
Z Water																									9		9	
W White Pine																										20	20	
Total	552	42	86		38				3			59	3		5	233			1					12	103	9	20	1163

ESCANABA RIVER STATE FOREST

GWINN FOREST MGT UNIT

MARQUETTE COUNTY

COMPARTMENT: **37**

Table 10 - COMPARTMENT VOLUME SUMMARY - ALL STANDS

COMPARTMENT SUMMARY			
TOTAL VOLUME		CUT VOLUME	
Hardwood	6398 Cds	Hardwood	1332 Cds
Hardwood	62 Mbf	Softwood	464 Cds
Softwood	3646 Cds	Softwood	16 Mbf
Softwood	2024 Mbf	Sum CutVol	1828 Cds
Sum TotVol	14216 Cds		
Total Cmpt Acres		Acres Proposed For Cut.....	
1163		85	

GWINN FOREST MGT UNIT

**Proposed Treatments
With NO Limiting Factors**

Compartment: 37

Entry Year: 2011

Stand	Cover Type	Acres	Age	Site Index	Mgt Obj	Condition	Method Cut	Harvest Priority	Cultural Need	FDF Status
17	B6	17	65	68	aspen (upland)	mature	shelterwood-seed	2	planting	
comnts Fmd : B4A4M4, Cut with stand 16 this treatment period. 20 years ago when we did inventory, we decided to leave the stand uncut, for aesthetics along the Charlie Lakes Road, the white birch looked real nice. Now we should cut the stand, because a lot of the birch is dying, and looks bad. For residual after the cut, clumps of live white birch will be left, along with the black and white spruce, red and white pine. A buffer will be left around the V-type that is located within the birch stand. If the birch and aspen do not come back well after the harvest, then it will be planted with white pine seedlings.										
24	A6	14	69	65	aspen (upland)	mature	final harvest	2		
comnts Fmd : A6F4M4, Poor quality aspen of variable age, scattered large pine. Cut every thing but the red and white pine. When the sale is in progress, AVOID crossing the motorcycle trail as much as possible with roads or skid trails.										
26	A6	17	69	65	aspen (upland)	mature	final harvest	2		
comnts Fmd : A6F4M4, quite a variety of species mixed in with the aspen, cut everything except the red and white pine. When the sale is in progress MINIMIZE crossings of the motorcycle trail, with roads or skid trails.										
42	A6	10	65	68	aspen (upland)	mature	final harvest	2		
comnts Fmd : Cut this tp. Save the red and white pine, some spruce and a few big aspen.										
403	G0	4		70	grass	nonstocked		0	opening maintenance	
410	G0	1		67	grass	nonstocked		0	opening maintenance	
411	G0	1		67	grass	nonstocked		0	opening maintenance	
412	G0	1		67	grass	nonstocked		0	opening maintenance	

Total Acres..... 65

GWINN FOREST MGT UNIT

**Proposed Treatments
With Limiting Factors**

Compartment: 37

Entry Year: 2011

Stand	Cover Type	Acres	Age	Site Index	Mgt Obj	Condition	Method Cut	Harvest Priority	Cultural Need	FDI Status
16	A6	27	65	68	aspen (upland)	mature	final harvest	3		

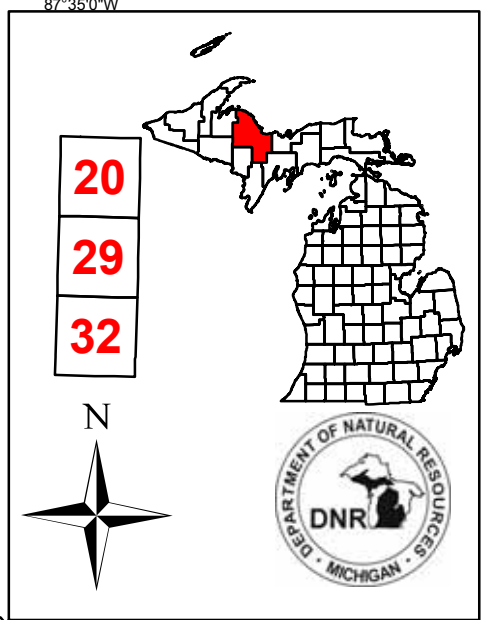
TREATMENT LIMITING FACTORS: Delayed treatment for age/size class diversity

comnts Fmd : Cut this treatment period. Save pine and oak, white spruce, and some large aspen.

Total Acres..... 27

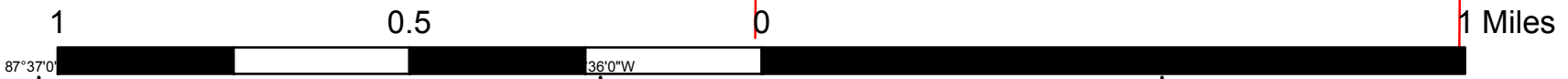
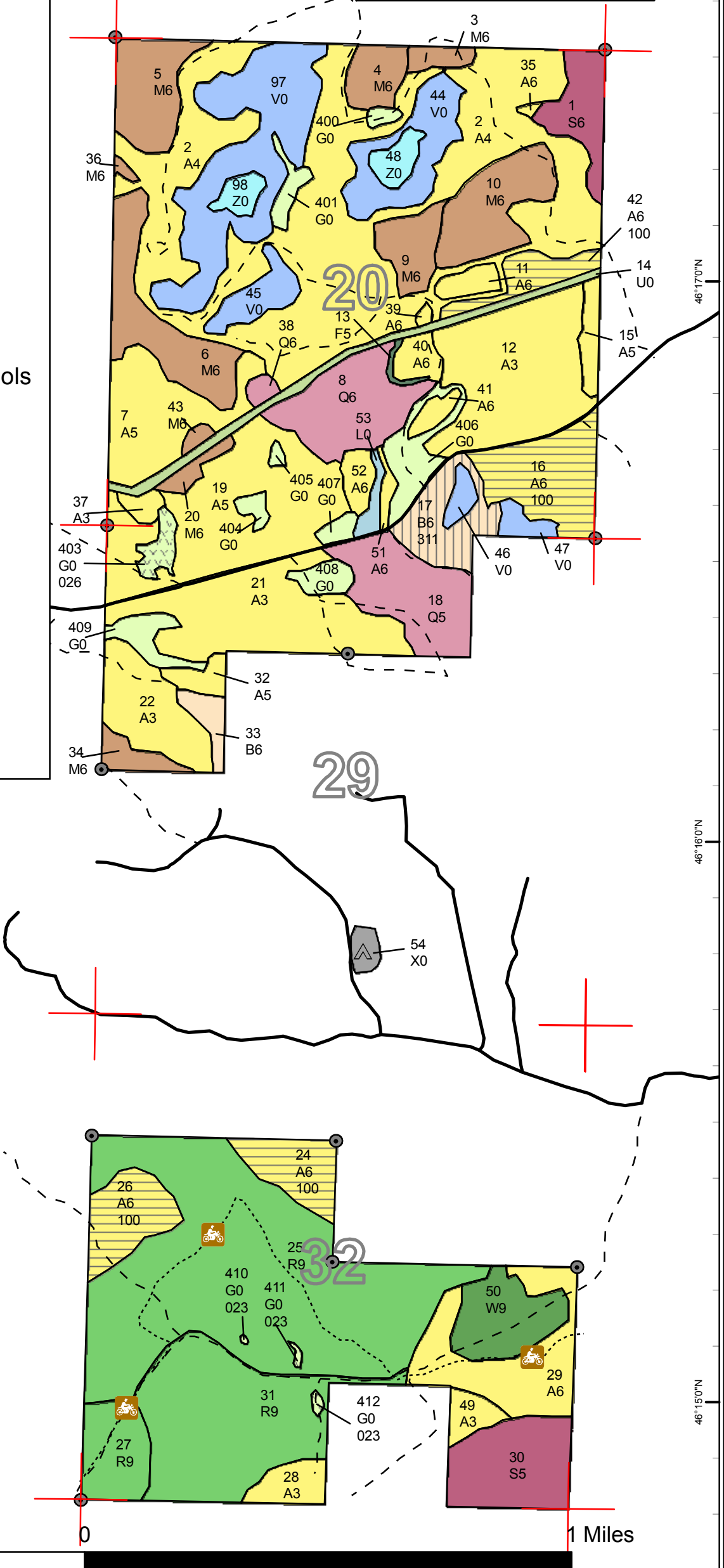
Covertypes & Treatment Map

Compartment 37
 T45N, R26W, Sec. 20, 29, 32
 County: Marquette
 Unit: Gwinn
 YOE: 2011
 Acres: 1,163 GIS Calculated
 Stand Examiner: John Koski
 Map Revised: 8/14/2009
 Map Phase: Pre-review



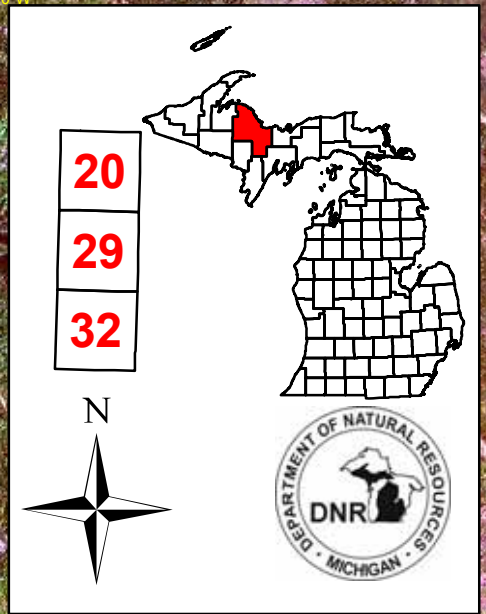
Legend

- Miris Corner
- Paved Roads
- Poor Dirt Roads
- Trails
- Water Feature
- △ Campgrounds
- Iron Pipe
- 🏍️ Motorcycle Trails
- Stand Boundary
- ▨ 023 - Opening Maintenance/Direct Seeding
- ▩ 026 - Opening Maintenance
- ▧ 100 - Final Harvest
- ▨ 311 - Shelterwood - Seed/Planting/Hand Tools
- A - Aspen
- B - Paper Birch
- F - Upland Spruce or Fir
- G - Grass
- L - Lowland Brush
- M - Northern Hardwoods
- Q - Mixed Swamp Conifers
- R - Red Pine
- S - Black Spruce Swamp
- U - Upland Brush
- V - Bog or Muskeg
- W - White Pine
- X - Non-Stocked
- Z - Water



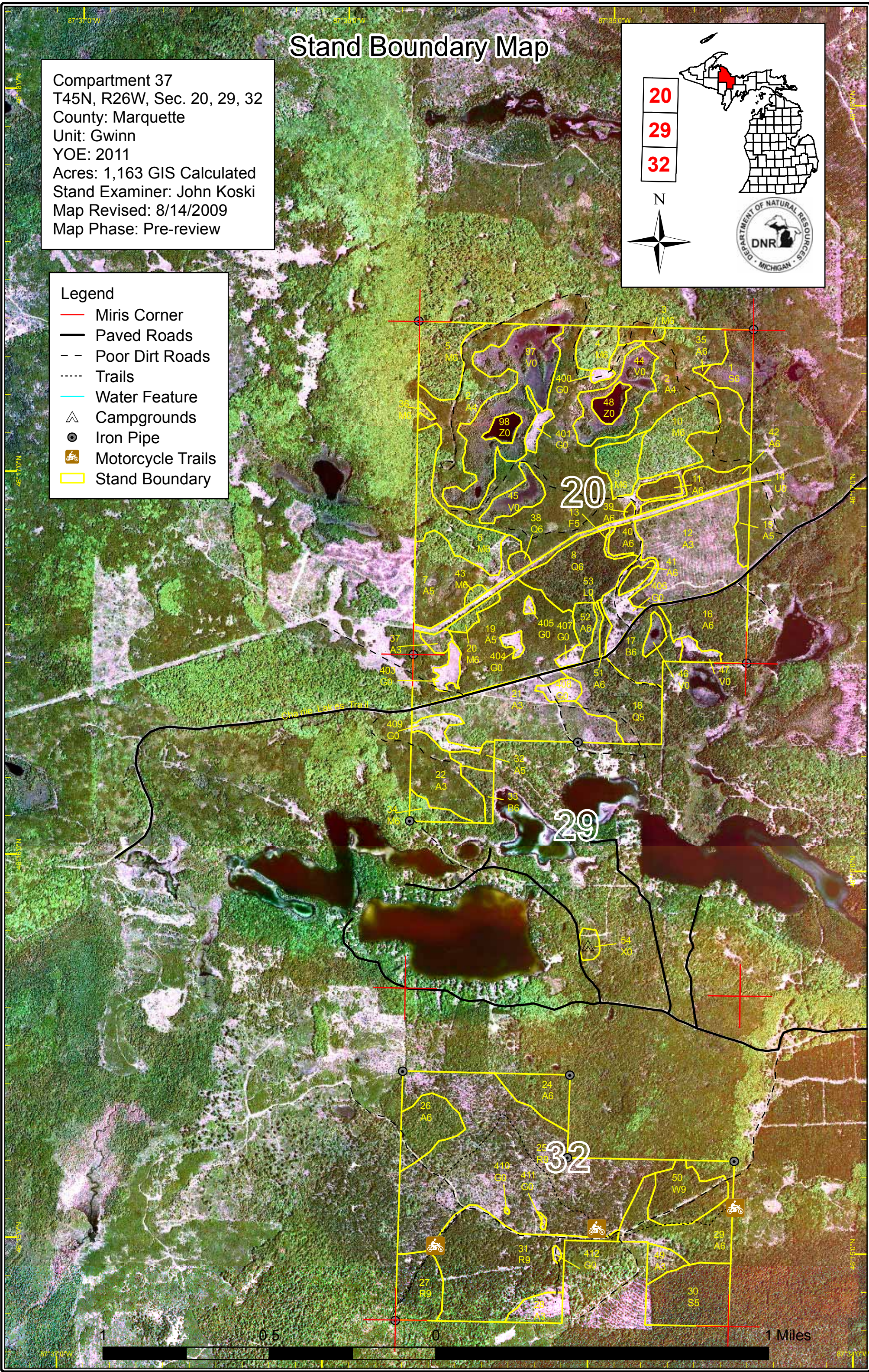
Stand Boundary Map

Compartment 37
 T45N, R26W, Sec. 20, 29, 32
 County: Marquette
 Unit: Gwinn
 YOE: 2011
 Acres: 1,163 GIS Calculated
 Stand Examiner: John Koski
 Map Revised: 8/14/2009
 Map Phase: Pre-review




Legend

- Miris Corner
- Paved Roads
- - Poor Dirt Roads
- ⋯ Trails
- Water Feature
- Campgrounds
- Iron Pipe
- Motorcycle Trails
- Stand Boundary





Dedicated & Proposed Special Conservation Area Map

Compartment 37
 T45N, R26W, Sec. 20, 29, 32
 County: Marquette
 Unit: Gwinn
 YOE: 2011
 Acres: 1,163 GIS Calculated
 Stand Examiner: John Koski
 Map Revised: 8/14/2009
 Map Phase: Pre-review







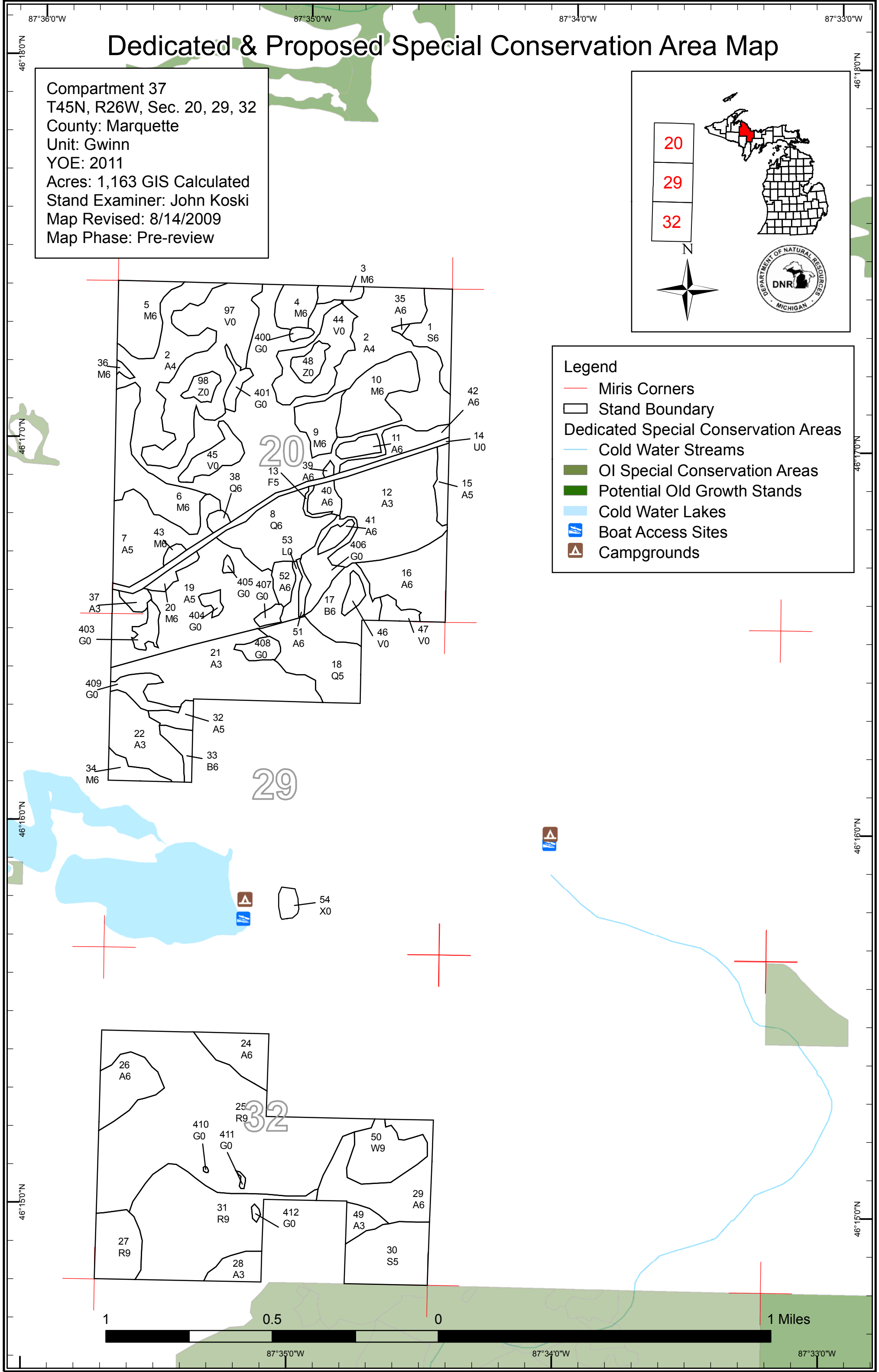
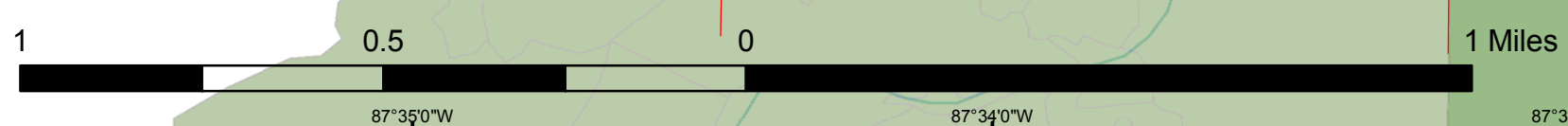
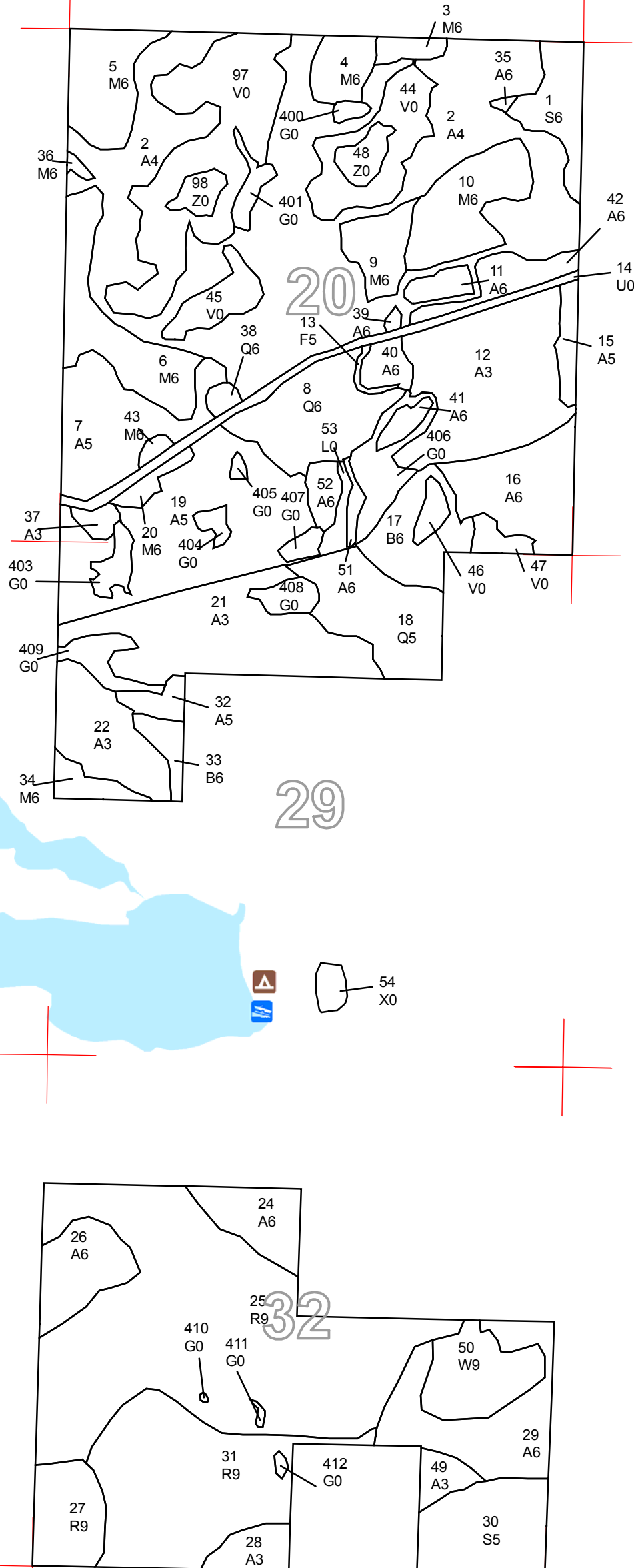
20
29
32

N

Legend

-  Miris Corners
-  Stand Boundary
- Dedicated Special Conservation Areas**
-  Cold Water Streams
-  Old Special Conservation Areas
-  Potential Old Growth Stands
-  Cold Water Lakes
-  Boat Access Sites
-  Campgrounds





DEDICATED CONSERVATION AREA DETAILS

* This is a list of Dedicated Biodiversity Areas for this compartment along with a 1/4 mile buffer surrounding the compartment. Refer to Dedicated Conservation Area Map for areas that the below listed Conservation Areas are located.

ERA = Ecological Reference Area
HCVA = High Conservation Value Area
SCA = Special Conservation Area

Conservation Area	Type	Description
SCA	Archaeological Site	An aquatic or terrestrial area of the State that contains physical remains of human occupation. These are sites of cultural and historical significance that may occur upon terrestrial areas and Great Lakes bottomlands. They include thousands of Native American settlements and burial sites, as well as French and British outposts, nineteenth century logging camps, mines and homesteads. Beneath the waters of the Great Lakes, there are shipwrecks and other remains documenting the maritime trade. Such sites may be identified by Natural heritage data from the State Historic Preservation Office. Proposed treatments in this compartment will be implemented in such a manner as to maintain the integrity of these sites. Due to the sensitive nature of this information, no further detail about location is available.
SCA	Cold Water Lake	A coldwater lake has temperature and dissolved oxygen conditions that allow naturally-reproduced or stocked trout populations and those of other coldwater fish species to persist from year to year. Suitable conditions for coldwater fishes may occur in Michigan lakes if they are relatively deep, have substantial groundwater inflows, or are located in colder (northern) areas of the state. Such lakes are established by Director's action and designated as trout resources by Fisheries Order 200.
SCA	Cold Water Stream	A coldwater stream has temperature and dissolved oxygen conditions that allow naturally-reproduced or stocked trout populations and those of other coldwater fish species (e.g., slimy sculpin) to persist from year to year. Coldwater streams in Michigan typically provide these conditions due to substantial contributions of groundwater to their stream flows. Such streams are established by Director's action and designated as trout resources by Fisheries Order 210.
SCA	Potential Old Growth Areas	This category contains stands were identified for a broad range of reasons and were coded in the OI database as stand condition 8 as potential old growth (POG). Approximately 310,000 acres have been identified through the Operations Inventory (OI)/Compartment Review process. For stands in Year of Entry 2008 and forward, potential old growth is managed for the identified objective until it is: 1) vetted through the Biodiversity Conservation Planning Process (BCPP) and given a specific designation and objective (as an ERA, HCVA, or other type of SCA) and is released from the potential old growth designation; or 2) it is released from the potential old growth designation via the Compartment Review process.