



**Gwinn Forest Management Unit
Compartment Review Presentation
Compartment #241 Entry Year: 2011
Compartment Acreage: 1269 County: Marquette**

Revision Date: 8/25/2009

Stand Examiner: Dean Wilson

Legal Description: T45N-R28W, sections 30, 31.

RMU (if applicable): N\A

Management Goals: Mixed use.

Soil and Topography: Soils range from muck and peat in the lowlands to fine to coarser sands in the uplands. The lowlands are level and the uplands are rolling to slightly hilly.

Ownership Patterns, Development, and Land Use in and Around the Compartment: State land surrounds most of this compartment with the exception of the north west side where it is bordered by small non-industrial ownership. The area is used heavily for active and passive recreation.

Unique, Natural Features: Johnson Lake and the Flat Rock Creek are located in this compartment.

Archeological, Historical, and Cultural Features: Impacts from the early 1900's pine logging days occur in this compartment in the form of old rail road grades and forest openings.

Special Management Designations or Considerations: There are some SCA designations mainly along the Flat Rock Creek.

Watershed and Fisheries Considerations: Protecting the water courses.

Wildlife Habitat Considerations: Maintaining oak for mast production.

Mineral Resource and Development Concerns and/or Restrictions: Surface sediments consist of medium and coarse-textured till. There is insufficient data to determine the glacial drift thickness. The Precambrian Archean Granite/Gneiss subcrops below the glacial drift. The Granite/Gneiss could be used as dimension stone and a rock quarry is located in Section 19. Sand and gravel pits are located in this area and there should be some potential. The abandoned Republic iron mine is located ten miles to the northwest. This Compartment was not previously leased for metallic exploration, but State land to the east was previously leased. There is no economic oil and gas production in the UP.

Vehicle Access: Is good to and internally for this compartment.

Survey Needs: None

Recreational Facilities and Opportunities: Used primarily for passive recreation.

Fire Protection: Moderate.

Additional Compartment Information: Several attempts to regenerate white birch in this compartment have failed. The established red pine plantations in the south portion of the area are doing well.

- **The following 5 reports from the Operations Inventory System (OIPC) are attached:**
 - ◆ **Cover Type by Age Class**
 - ◆ **Cover Type by Management Objective**
 - ◆ **Compartment Volume Summary**
 - ◆ **Proposed Treatments – No Limiting Factors**
 - ◆ **Proposed Treatments – With Limiting Factors**

- **The following information is displayed, where pertinent, on the attached compartment maps:**
 - ◆ **Base feature information, stand numbers, cover types**
 - ◆ **Proposed treatments**
 - ◆ **Proposed road access system**
 - ◆ **Suggested potential old growth**

8/31/2009 2:34:28 PM

Michigan Department of Natural Resources - Operations Inventory System
Individual Compartment Report

ESCANABA RIVER STATE FOREST

GWINN FOREST MGT UNIT

MARQUETTE COUNTY

COMPARTMENT: 241

Table 3

(acres shown in boxes)

STAND AGE CLASS

COVER TYPE	Not Coded	0-9	10-19	20-29	30-39	40-49	50-59	60-69	70-79	80-89	90-99	100-109	110-119	120-129	130-139	140-149	150-159	All Aged	Total
Aspen		139	84	256	113			3	68										663
Black Spruce																		45	45
Bog or Marsh	13																		13
Grass	41																		41
Jack Pine				6															6
Mx Swmp Cnfr																		87	87
Oak																		13	13
Paper Birch									89										89
Red Pine			92	55					4									66	217
Spruce Fir								39		8								23	70
Treed Bog	2																		2
Upland Hdwds																		2	2
Water	6																		6
White Pine																		15	15
Total	62	139	176	317	113			42	161	8								251	1269

8/31/2009 2:34:31 PM

Michigan Department of Natural Resources - Operations Inventory System
Individual Compartment Report

ESCANABA RIVER STATE FOREST

GWINN FOREST MGT UNIT

MARQUETTE COUNTY

COMPARTMENT: 241

Table 3A

(acres shown in boxes)

MANAGEMENT OBJECTIVE TYPE

COVER TYPE	A	S	V	C	G	H	J	I	L	P	N	Q	X	O	B	R	K	Y	F	E	T	D	U	M	Z	W	Total
A Aspen	663																										663
S Black Spruce		45																									45
V Bog or Marsh			13																								13
G Grass					41																						41
J Jack Pine							6																				6
Q Mx Swmp Cnfr												87															87
O Oak														13													13
B Paper Birch	45														44												89
R Red Pine															217												217
F Spruce Fir																			70								70
D Treed Bog																						2					2
M Upland Hdwds																								2			2
Z Water																									6		6
W White Pine																										15	15
Total	708	45	13		41		6					87		13	44	217			70			2		2	6	15	1269

ESCANABA RIVER STATE FOREST

GWINN FOREST MGT UNIT

MARQUETTE COUNTY

COMPARTMENT: **241**

Table 10 - COMPARTMENT VOLUME SUMMARY - ALL STANDS

COMPARTMENT SUMMARY			
TOTAL VOLUME		CUT VOLUME	
Hardwood	5250 Cds	Hardwood	3848 Cds
Hardwood	75 Mbf	Softwood	410 Cds
Softwood	3687 Cds	Softwood	56 Mbf
Softwood	739 Mbf	Sum CutVol	4370 Cds
Sum TotVol	10565 Cds		
Total Cmpt Acres		Acres Proposed For Cut.....	
1269		183	

GWINN FOREST MGT UNIT

**Proposed Treatments
With NO Limiting Factors**

Compartment: 241 Entry Year: 2011

Stand	Cover Type	Acres	Age	Site Index	Mgt Obj	Condition	Method Cut	Harvest Priority	Cultural Need	FDI Status
1	A6	3	74	55	aspen (upland)	mature	final harvest	6		
comnts Fmd : Stand under contract: TS#112-07-01.										
7	A6	33	74	59	aspen (upland)	mature	final harvest	1		
comnts Fmd : Leave all conifers within 300 feet of the Flat Rock Creek. Retain red and white pine.										
8	F6	8	79	47	spruce-fir (uplands- including upland black spruce)	mature	seed tree	1		
comnts Fmd : Mostly drained with some smaller localities of Q inclusions. An L inclusion occurs in the north part of stand. Treat the uplands and exclude the wet spots..										
Wld : No treatment to occur over wetland soils, DFC mirrors the current composition of the stand.-KCS										
19	B6	32	73	59	aspen (upland)	mature	final harvest	1		
comnts Fmd : Harvest all aspen, white birch, maple, spruce-fir, leave all other species.										
Wld : A fair representation of good quality oak exists in this stand as well as a red pine seed source, the stand will be harvested per Dean's prescription while retaining some birch clumps for a seed source. The stand will be anchor chained to foster oak and red pine regeneration even though aspen BA is 10-20 square feet. An MO of B is not practical but perhaps anchor chaining will prompt some regeneration. Future MO should be A with a hopeful R and O component of higher stem densities than current. -KCS										
20	W9	15		60	white pine	unevenaged	shelterwood-seed	1		
Wld : Dean and I agreed anchor chaining would eliminate the usual delay in regeneration caused by heavy duff in this Rubicon sand and inadequate exposure of the seed bed. Anchor chain with an MO of W and an understory partially represented by R, F and J. -KCS										
21	A6	18	73	59	aspen (upland)	mature	final harvest	1		
comnts Fmd : Wide ranging species composition, mainly aspen and/or white birch. Harvest aspen, white birch, maple and spruce-fir, leave other species.										
33	A6	3	73	59	aspen (upland)	mature	final harvest	1		
comnts Fmd : Harvest only the aspen, white birch, and maple.										
38	B6	13	73	59	aspen (upland)	mature	seed tree	1		
comnts Fmd : Harvest only aspen, white birch, maple, and spruce-fir. Mark for retention some white birch and spruce-fir.										
Wld : Considered anchor chaining this stand but there is much advanced regeneration which will be released by the harvest, a diverse stand should result from the prescription. Compare regeneration in this stand to those that are anchor chained during subsequent entry year, was anchor chaining cost effective? KCS										
48	A6	5	73	59	aspen (upland)	mature	final harvest	1		
comnts Fmd : Harvest only aspen, white birch, and maple.										
52	B6	44	73	55	paper birch	mature	seed tree	1		
comnts Fmd : Harvest only white birch, aspen, and maple. Mark birch seed trees. Will plant red (75%) and white (25%) pines post harvest to augment regeneration.										
Wld : The stand will be harvested per Dean's prescription while retaining a portion of birch clumps for a seed source and then anchor chained to foster prompt and diverse regeneration. An MO of B is not practical but perhaps anchor chaining will prompt some regeneration.										
57	A6	3	73	55	aspen (upland)	mature	final harvest	1		
comnts Fmd : Harvest only aspen, white birch, and maple.										
59	A5	3	65	55	aspen (upland)	mature	final harvest	2		
comnts Fmd : Cut with adjacent State timber stand to the east in Cmpt 240.										
Total Acres.....		180								

GWINN FOREST MGT UNIT

**Proposed Treatments
With Limiting Factors**

Compartment: 241

Entry Year: 2011

Stand	Cover Type	Acres	Age	Site Index	Mgt Obj	Condition	Method Cut	Harvest Priority	Cultural Need	FDI Status
3	A6	3	74	59	aspen (upland)	mature	final harvest	3		

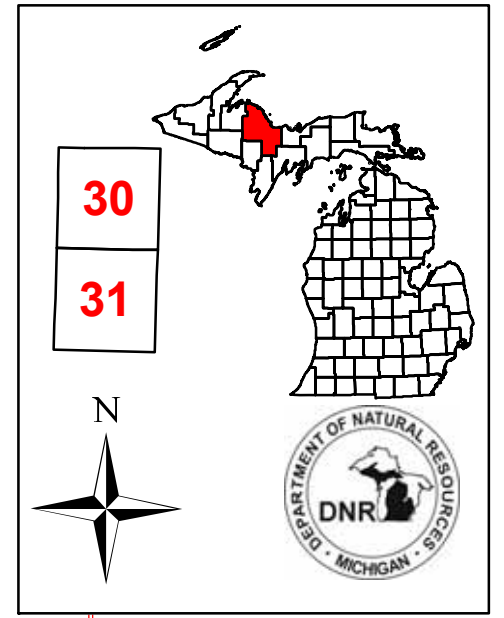
TREATMENT LIMITING FACTORS: Inadequate volume due to small acreage

comnts Fmd : Small out of the way stand that is providing den tree and snag wildlife habitat.

Total Acres..... 3

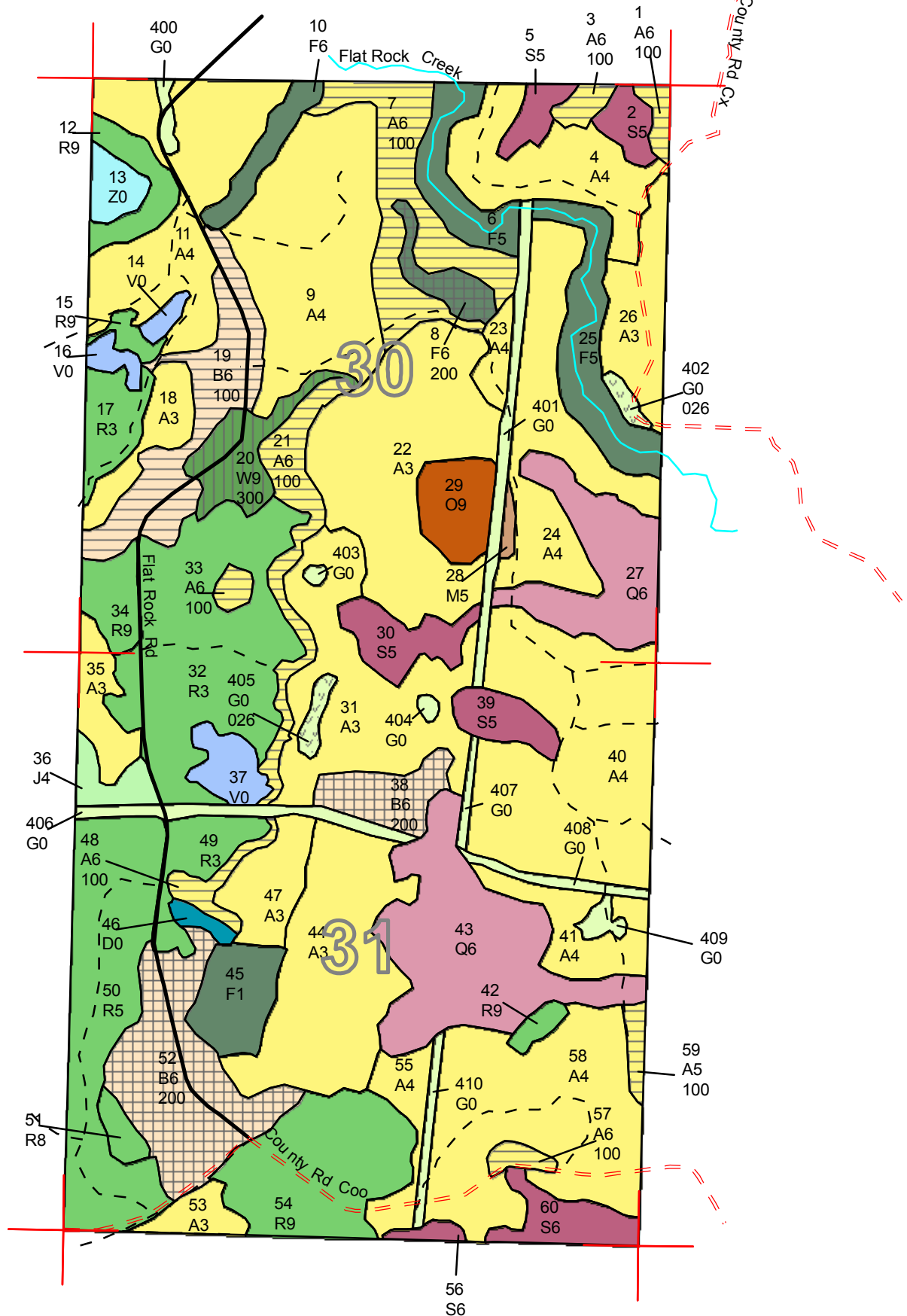
Covertypes & Treatment Map

Compartment 241
 T45N, R28W, Sec. 30, 31
 County: Marquette
 Unit: Gwinn
 YOE: 2011
 Acres: 1,269 GIS Calculated
 Stand Examiner: Dean Wilson
 Map Revised: 5/11/2009
 Map Phase: Pre-review



Legend

- Miris Corners
- - - County Paved Roads
- Paved Roads
- - - Poor Dirt Roads
- Water Features
- Stand Boundary
- 026 - Opening Maintenance
- 100 - Final Harvest
- 200 - Seed Tree
- 300 - Shelterwood - Seed
- A - Aspen
- B - Paper Birch
- D - Treed Bog
- F - Upland Spruce or Fir
- G - Grass
- J - Jack Pine
- M - Northern Hardwoods
- O - Oak
- Q - Mixed Swamp Conifers
- R - Red Pine
- S - Black Spruce Swamp
- V - Bog or Muskeg
- W - White Pine
- Z - Water



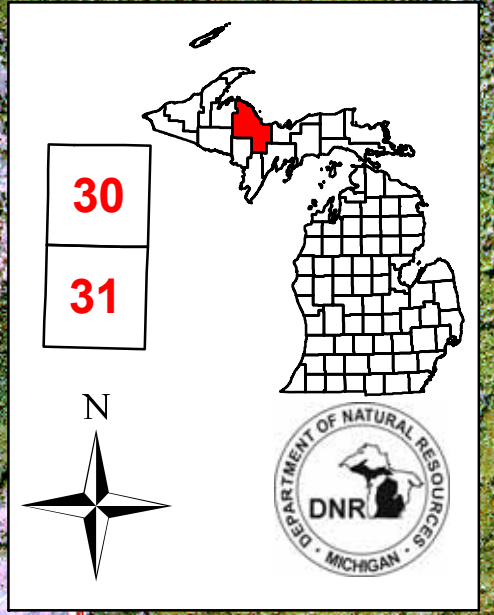
87°53'0"W 87°52'0"W 87°51'0"W 87°50'0"W

46°17'0"N
46°16'0"N
46°15'0"N

87°50'0"W
87°51'0"W
87°52'0"W
87°53'0"W

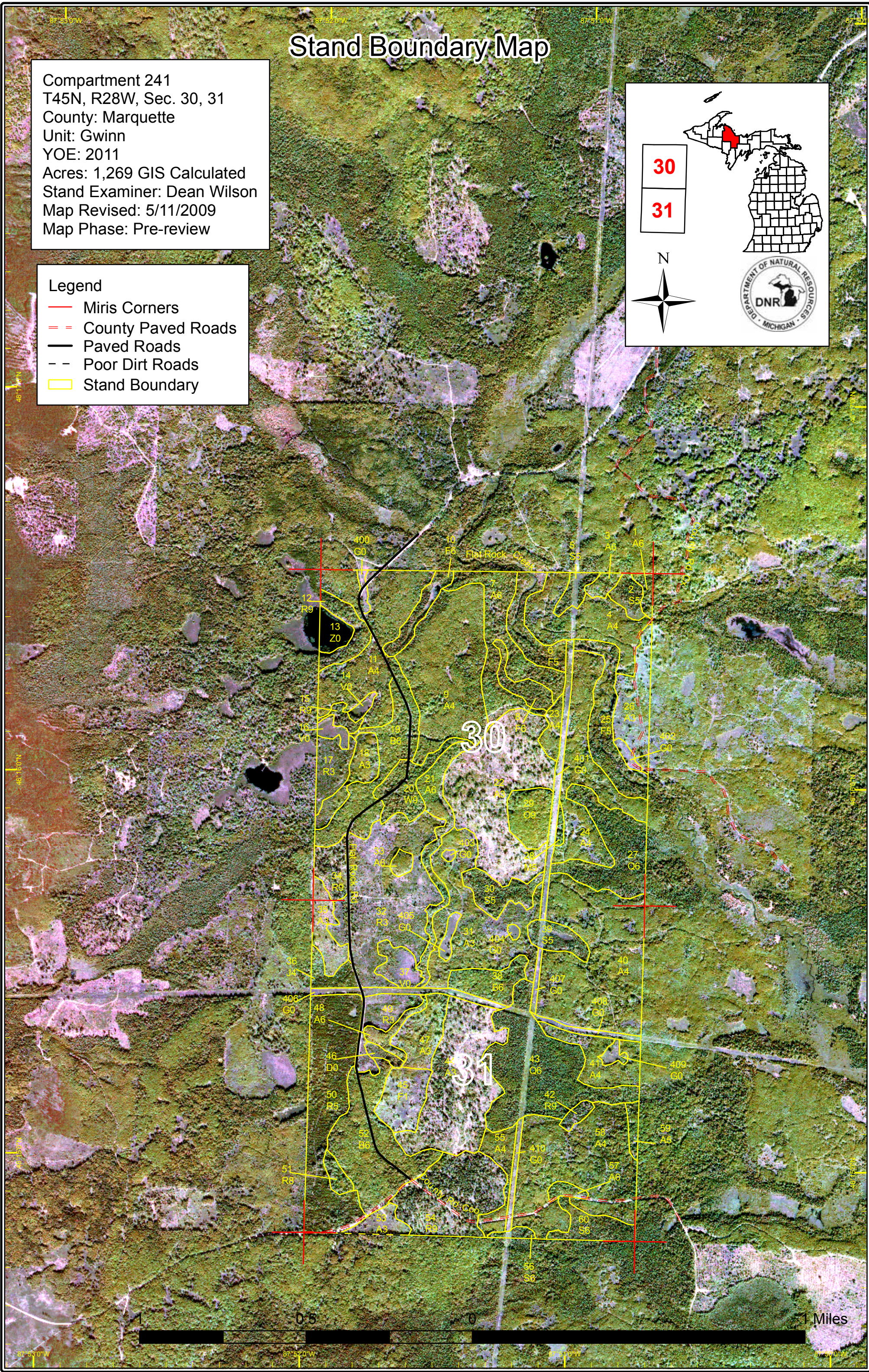
Stand Boundary Map

Compartment 241
T45N, R28W, Sec. 30, 31
County: Marquette
Unit: Gwinn
YOE: 2011
Acres: 1,269 GIS Calculated
Stand Examiner: Dean Wilson
Map Revised: 5/11/2009
Map Phase: Pre-review



Legend

- Miris Corners
- == County Paved Roads
- Paved Roads
- - Poor Dirt Roads
- Stand Boundary





DEDICATED CONSERVATION AREA DETAILS

* This is a list of Dedicated Biodiversity Areas for this compartment along with a 1/4 mile buffer surrounding the compartment. Refer to Dedicated Conservation Area Map for areas that the below listed Conservation Areas are located.

ERA = Ecological Reference Area
 HCVA = High Conservation Value Area
 SCA = Special Conservation Area

Conservation Area	Type	Description
SCA	Potential Old Growth Areas	This category contains stands were identified for a broad range of reasons and were coded in the OI database as stand condition 8 as potential old growth (POG). Approximately 310,000 acres have been identified through the Operations Inventory (OI)/Compartment Review process. For stands in Year of Entry 2008 and forward, potential old growth is managed for the identified objective until it is: 1) vetted through the Biodiversity Conservation Planning Process (BCPP) and given a specific designation and objective (as an ERA, HCVA, or other type of SCA) and is released from the potential old growth designation; or 2) it is released from the potential old growth designation via the Compartment Review process.