



**Gwinn Forest Management Unit
Compartment Review Presentation
Compartment 281 Entry Year: 2011
Compartment Acreage: 1081 County: Marquette**

Revision Date: 8/25/09

Stand Examiner: Dean Wilson

Legal Description: T46N-R24W, sections 13, 23, 25, 31, 32, 34.

RMU (if applicable):

Management Goals: Habitat/Vegetative

Soil and Topography: Uplands are sandy loam to loam soils with rolling to hilly topography. The lowlands are level and have soils consisting of various organics.

Ownership Patterns, Development, and Land Use in and Around the Compartment: This compartment consists of six satellite State ownerships ranging from 440 to 40 acres in size. Surrounding ownerships are mostly non-industrial private forest land owners. Primary land use is forest production and passive recreation.

Unique, Natural Features: The bulk of this compartment consists of higher quality northern hardwoods. Big Trout, Sporely, and Silver Lakes are managed trout fisheries and are bordered by State land in this tract. Cold water trout streams and rivers being the Sheen Creek, East and West Branches of the Chocolay and the Chocolay River occur in this compartment.

Archeological, Historical, and Cultural Features: None noted.

Special Management Designations or Considerations: Two public access\boat launch sites, one each on Sporely and Big Trout Lakes are heavily used by the public.

Watershed and Fisheries Considerations: Watershed protection and erosion prevention are important on the tract.

Wildlife Habitat Considerations: Much of this compartment consists of scattered parcels of state owned land. Many of the stands bordering lakes and rivers are classified as Special Conservation Areas (SCA) to protect riparian and wildlife corridors, and provide climax forest conditions for wildlife and aesthetics. Northern hardwood stands that are proposed for selective harvests are also being prescribed for underplanting hemlock and/or white pine to restore historic diversity to those sites.

Mineral Resource and Development Concerns and/or Restrictions: Surface sediments consist of an end moraine of coarse-textured till and minor glacial outwash sand & gravel and postglacial alluvium. The glacial drift thickness varies between 50 and 100 feet. The Precambrian Jacobsville Sandstone and Archean

Granite/Gneiss subcrop below the glacial drift. The Jacobsville was used as a building stone and the granite/gneiss could be used as a dimension stone. A gravel pit is located in Section 23 and there should be potential. Abandoned iron mines are located three miles to the southwest. Section 31 was previously leased for metallic exploration. There is no economic oil and gas production in the UP.

Vehicle Access: Is generally good to and around this compartment with a few exceptions involving crossing private property and terrain limitations.

Survey Needs: None this entry.

Recreational Facilities and Opportunities: The Lakes are well developed with access sites. Passive recreational use is heavy in this area.

Fire Protection: Low to moderate.

Additional Compartment Information:

- **The following 5 reports from the Operations Inventory System (OIPC) are attached:**
 - ◆ **Cover Type by Age Class**
 - ◆ **Cover Type by Management Objective**
 - ◆ **Compartment Volume Summary**
 - ◆ **Proposed Treatments – No Limiting Factors**
 - ◆ **Proposed Treatments – With Limiting Factors**

- **The following information is displayed, where pertinent, on the attached compartment maps:**
 - ◆ **Base feature information, stand numbers, cover types**
 - ◆ **Proposed treatments**
 - ◆ **Proposed road access system**
 - ◆ **Suggested potential old growth**

8/31/2009 2:49:14 PM

Michigan Department of Natural Resources - Operations Inventory System
Individual Compartment Report

ESCANABA RIVER STATE FOREST

GWINN FOREST MGT UNIT

MARQUETTE COUNTY

COMPARTMENT: 281

Table 3

(acres shown in boxes)

STAND AGE CLASS

COVER TYPE	Not Coded	0-9	10-19	20-29	30-39	40-49	50-59	60-69	70-79	80-89	90-99	100-109	110-119	120-129	130-139	140-149	150-159	All Aged	Total
Aspen		90	37		6				7										140
Black Spruce																		29	29
Bog or Marsh	7																		7
Grass	6																		6
Hemlock																		8	8
LowInd Brush	6																	6	12
Marsh	2																		2
Mx Swmp Cnfr																		24	24
Non Stocked	8																		8
Oak																		20	20
Spruce Fir									29									18	47
Swamp Hrdwds																		19	19
Upland Hdwds				5					5	4								727	741
Water	18																		18
Total	47	90	37	5	6				41	4								851	1081

8/31/2009 2:49:18 PM

Michigan Department of Natural Resources - Operations Inventory System
Individual Compartment Report

ESCANABA RIVER STATE FOREST

GWINN FOREST MGT UNIT

MARQUETTE COUNTY

COMPARTMENT: 281

Table 3A

(acres shown in boxes)

MANAGEMENT OBJECTIVE TYPE

COVER TYPE	A	S	V	C	G	H	J	I	L	P	N	Q	X	O	B	R	K	Y	F	E	T	D	U	M	Z	W	Total
A Aspen	140																										140
S Black Spruce		29																									29
V Bog or Marsh			7																								7
G Grass					6																						6
H Hemlock						8																					8
L Lowlnd Brush									12																		12
N Marsh											2																2
Q Mx Swmp Cnfr												24															24
X Non Stocked					2								6														8
O Oak														20													20
F Spruce Fir																			47								47
E Swamp Hrdwds																				19							19
M Upland Hdwds																								741			741
Z Water																									18		18
Total	140	29	7		8	8			12		2	24	6	20					47	19				741	18		1081

ESCANABA RIVER STATE FOREST

GWINN FOREST MGT UNIT

MARQUETTE COUNTY

COMPARTMENT: **281**

Table 10 - COMPARTMENT VOLUME SUMMARY - ALL STANDS

COMPARTMENT SUMMARY			
TOTAL VOLUME		CUT VOLUME	
Hardwood	8836 Cds	Hardwood	744 Cds
Hardwood	2395 Mbf	Hardwood	72 Mbf
Softwood	1725 Cds	Softwood	60 Cds
Softwood	121 Mbf	Sum CutVol	948 Cds
Sum TotVol	15593 Cds		
Total Cmpnt Acres		Acres Proposed For Cut.....	119
1081			

GWINN FOREST MGT UNIT

**Proposed Treatments
With NO Limiting Factors**

Compartment: 281 Entry Year: 2011

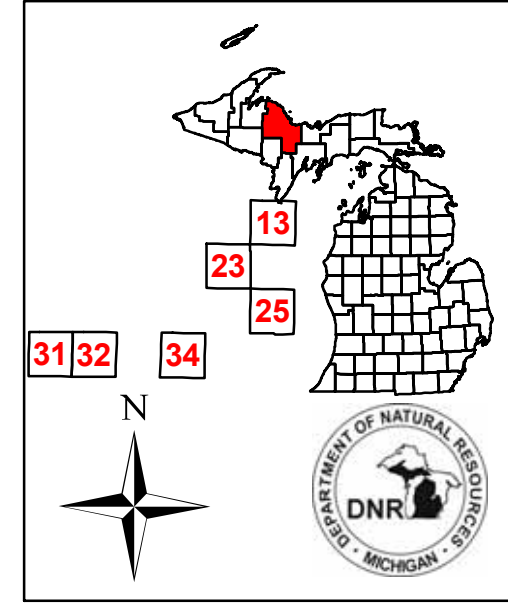
Stand	Cover Type	Acres	Age	Site Index	Mgt Obj	Condition	Method Cut	Harvest Priority	Cultural Need	FDF Status
44	M6	29		60	northern hardwood	unevenaged	selection	1		
comnts Fmd : Stand ranges widely in quality and composition with white birch inclusions. Conduct individual tree selection in quality areas and larger group selections (up to 2 acre patch cuts) to encourage oak and white birch regeneration. Wld : Cut no Hemlock, White Pine, Cedar, Red Pine, or Oak if it exists in this stand. Plant hemlock/white pine mix post harvest.										
55	X0	2		45	grass	nonstocked		0	planting	
comnts Fmd : Sand pit developed by the Marquette County Road Commission. Needs reclamation. Hand plant 2-0 jack pine.										
402	G0	2		56	grass	nonstocked		0	opening maintenance	

Total Acres..... 33

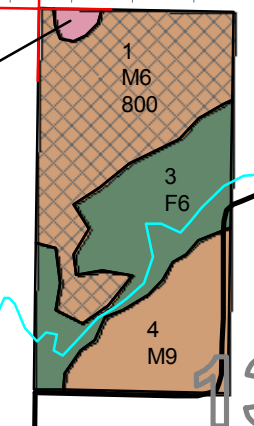
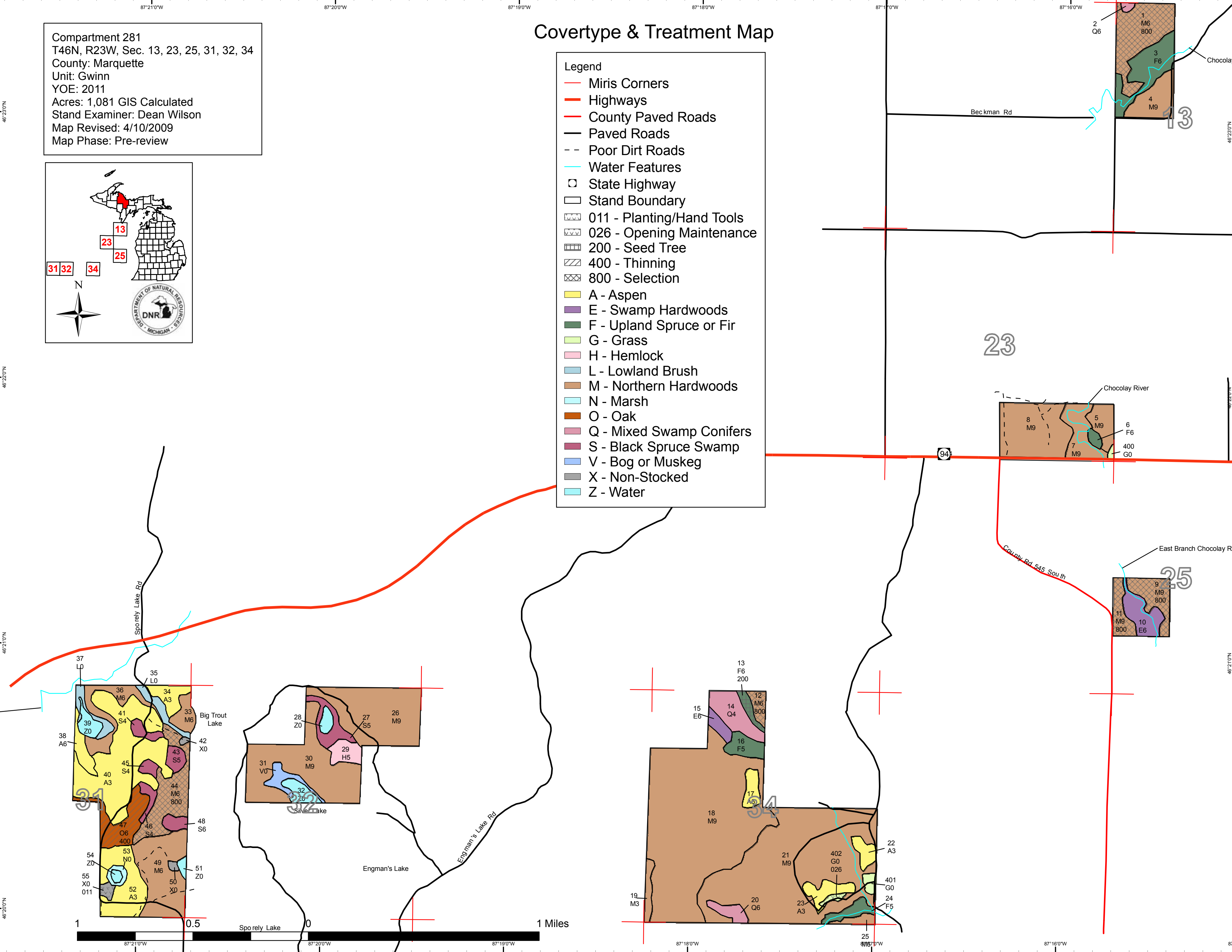
Stand	Cover Type	Acres	Age	Site Index	Mgt Obj	Condition	Method Cut	Harvest Priority	Cultural Need	FDF Status
1	M6	36		60	northern hardwood	unevenaged	selection	3		
TREATMENT LIMITING FACTORS: Adjacent landowner denies access										
comnts Fmd : Need access across private land. Pockets of blow down from the storm of 7\21\02.										
Wld : If harvest occurs, WLD would like to underplant hemlock and white pine to increase diversity for wildlife.										
9	M9	15		60	northern hardwood	unevenaged	selection	1		
TREATMENT LIMITING FACTORS: Neighbor										
comnts Fmd : Permission to access this stand across the neighbor's property should be able to be obtained.										
Wld : Cut no hemlock, cedar, or white pine.										
11	M9	10		60	northern hardwood	unevenaged	selection	1		
TREATMENT LIMITING FACTORS: Adjacent landowner denies access										
comnts Fmd : Private land ownership has changed-may be able to get permission to use road. A significant portion of this stand is inoperable due to land form. Retain all cedar, hemlock, and white pine.										
Wld :										
12	M6	5	72	60	northern hardwood	immature	selection	1		
TREATMENT LIMITING FACTORS: Road needed (resources not presently available)										
comnts Fmd : May be able to get access to stand from adjacent landowner who has a road up to the property line.										
Wld : To be underplanted with hemlock post harvest.										
13	F6	4	72	55	spruce-fir (uplands- including upland black spruce)	mature	seed tree	1		
TREATMENT LIMITING FACTORS: Road needed (resources not presently available)										
comnts Fmd : Harvest with stand 12 if access can be obtained.										
47	O6	20		58	oak	unevenaged	thinning	1		
TREATMENT LIMITING FACTORS: Other special wildlife habitat consideration (desc. In comments)										
comnts Fmd : Maintain a BA of 80 to 90 sq. ft.. Retain all white birch.										
Wld : Encourage acorn production by opening up canopy around larger oak trees as to allow them to increase crown size. Cut no white pine, hemlock, or cedar if it exists in this stand.										
Total Acres.....		90								

Compartment 281
 T46N, R23W, Sec. 13, 23, 25, 31, 32, 34
 County: Marquette
 Unit: Gwinn
 YOY: 2011
 Acres: 1,081 GIS Calculated
 Stand Examiner: Dean Wilson
 Map Revised: 4/10/2009
 Map Phase: Pre-review

Covertypes & Treatment Map

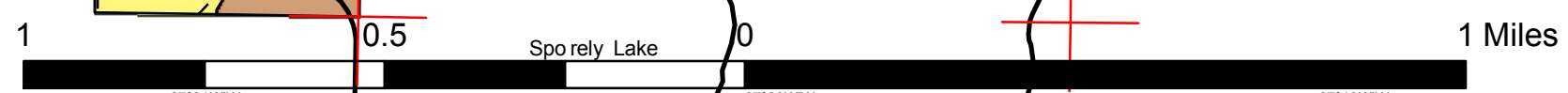


- Legend**
- Miris Corners
 - Highways
 - County Paved Roads
 - Paved Roads
 - - Poor Dirt Roads
 - Water Features
 - State Highway
 - Stand Boundary
 - ▨ 011 - Planting/Hand Tools
 - ▨ 026 - Opening Maintenance
 - ▨ 200 - Seed Tree
 - ▨ 400 - Thinning
 - ▨ 800 - Selection
 - A - Aspen
 - E - Swamp Hardwoods
 - F - Upland Spruce or Fir
 - G - Grass
 - H - Hemlock
 - L - Lowland Brush
 - M - Northern Hardwoods
 - N - Marsh
 - O - Oak
 - Q - Mixed Swamp Conifers
 - S - Black Spruce Swamp
 - V - Bog or Muskeg
 - X - Non-Stocked
 - Z - Water



23

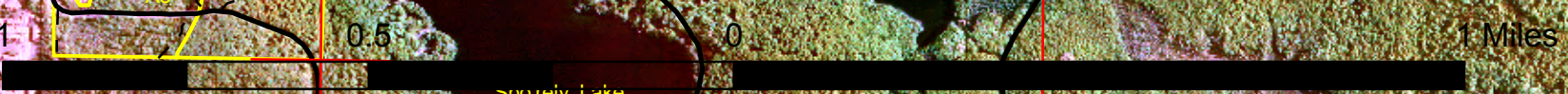
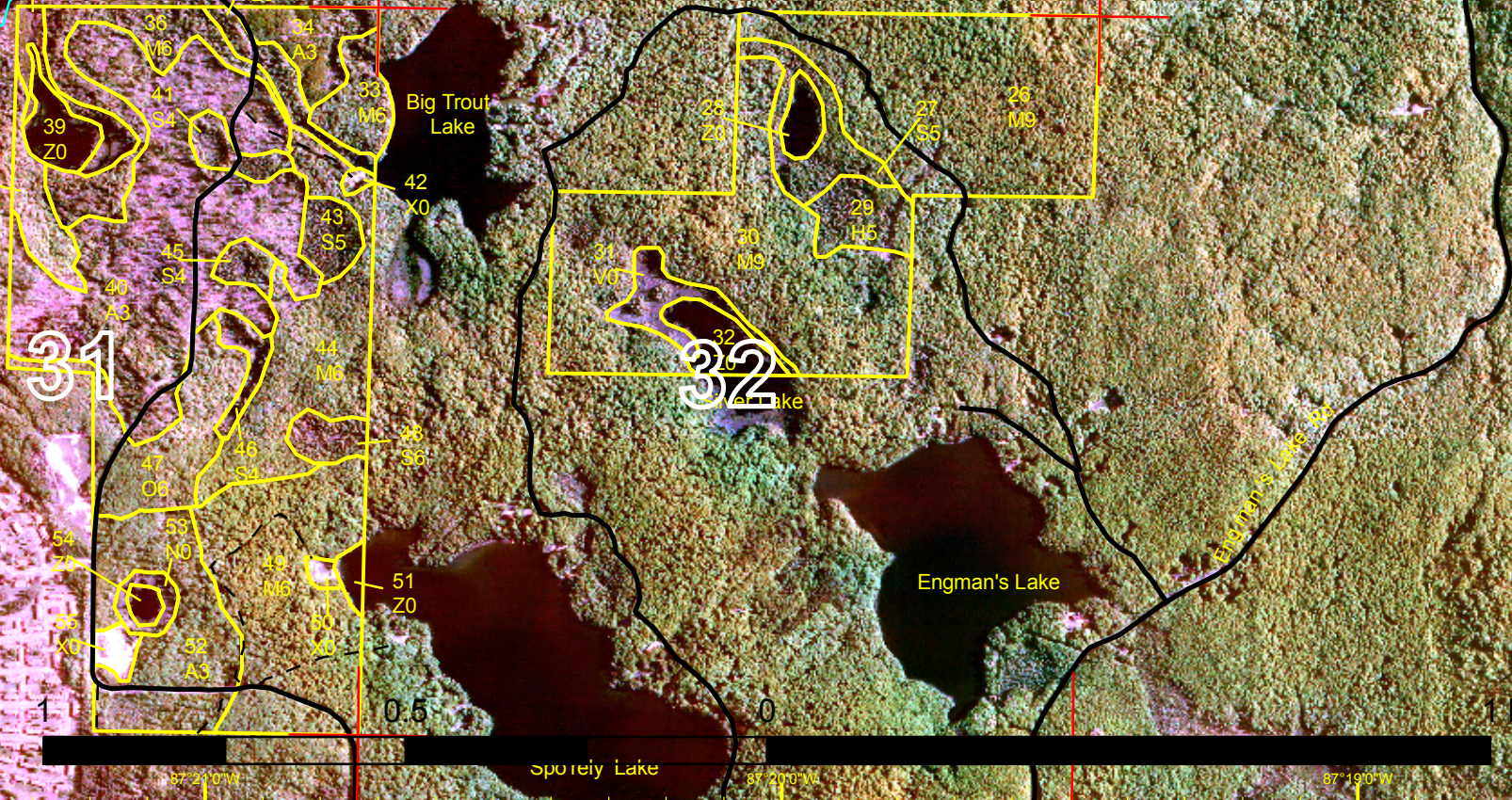
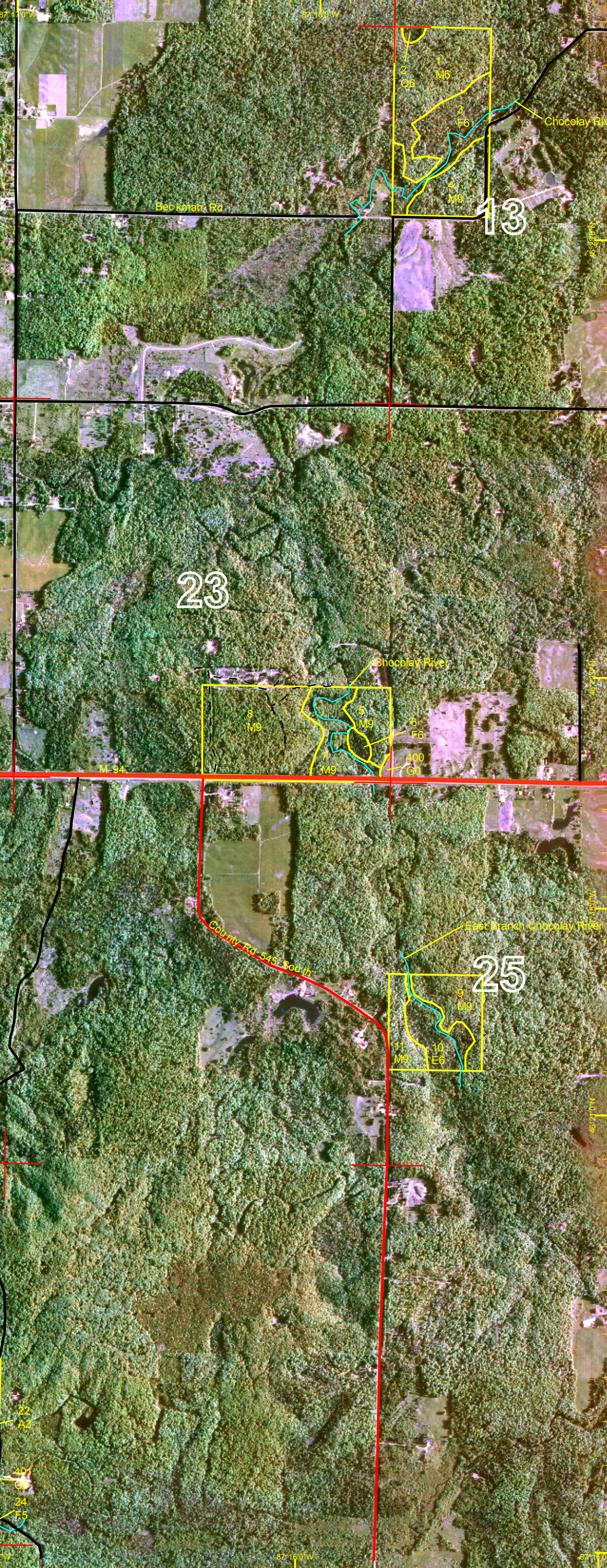
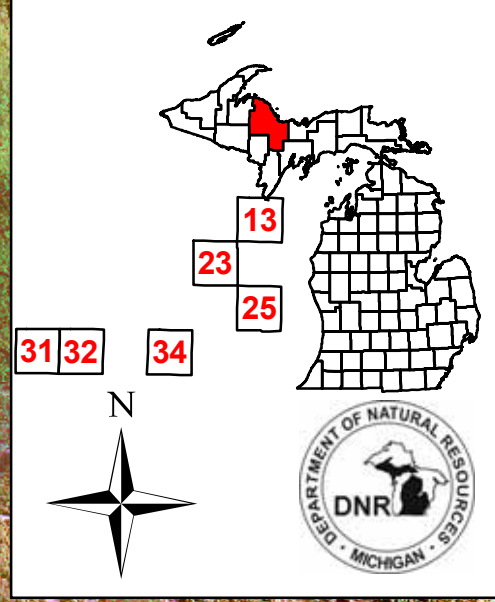
25



Compartment 281
T46N, R23W, Sec. 13, 23, 25, 31, 32, 34
County: Marquette
Unit: Gwinn
YOE: 2011
Acres: 1,081 GIS Calculated
Stand Examiner: Dean Wilson
Map Revised: 4/10/2009
Map Phase: Pre-review

Stand Boundary Map

- Legend
- Miris Corners
 - Highways
 - County Paved Roads
 - Paved Roads
 - Poor Dirt Roads
 - Water Features
 - State Highway
 - Stand Boundary

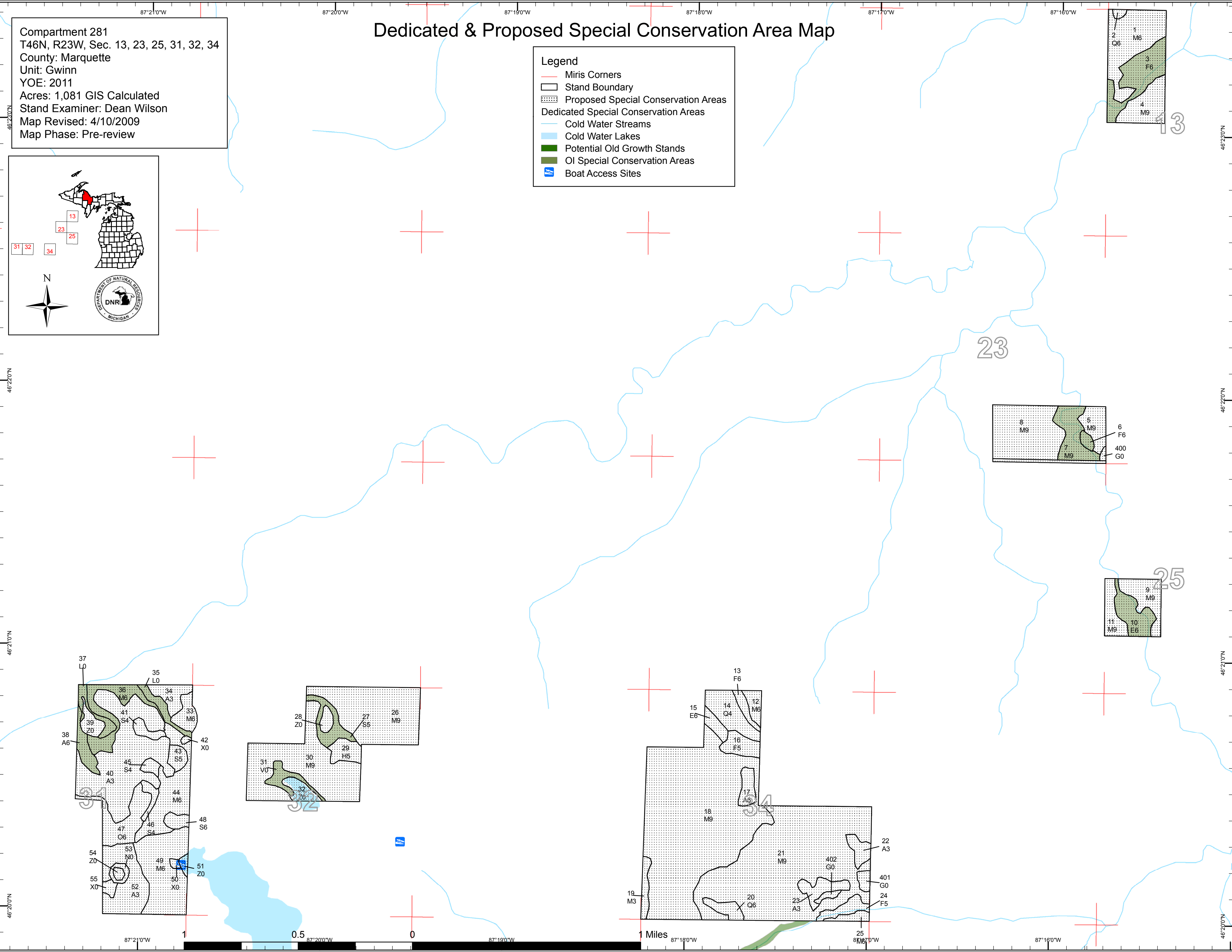


Dedicated & Proposed Special Conservation Area Map

Compartment 281
 T46N, R23W, Sec. 13, 23, 25, 31, 32, 34
 County: Marquette
 Unit: Gwinn
 YOE: 2011
 Acres: 1,081 GIS Calculated
 Stand Examiner: Dean Wilson
 Map Revised: 4/10/2009
 Map Phase: Pre-review

Legend

- Miris Corners
- Stand Boundary
- Proposed Special Conservation Areas
- Dedicated Special Conservation Areas**
- Cold Water Streams
- Cold Water Lakes
- Potential Old Growth Stands
- Old Growth Special Conservation Areas
- Boat Access Sites





DEDICATED CONSERVATION AREA DETAILS

* This is a list of Dedicated Biodiversity Areas for this compartment along with a 1/4 mile buffer surrounding the compartment. Refer to Dedicated Conservation Area Map for areas that the below listed Conservation Areas are located.

ERA = Ecological Reference Area
 HCVA = High Conservation Value Area
 SCA = Special Conservation Area

Conservation Area	Type	Description
SCA	Cold Water Lake	A coldwater lake has temperature and dissolved oxygen conditions that allow naturally-reproduced or stocked trout populations and those of other coldwater fish species to persist from year to year. Suitable conditions for coldwater fishes may occur in Michigan lakes if they are relatively deep, have substantial groundwater inflows, or are located in colder (northern) areas of the state. Such lakes are established by Director's action and designated as trout resources by Fisheries Order 200.
SCA	Cold Water Stream	A coldwater stream has temperature and dissolved oxygen conditions that allow naturally-reproduced or stocked trout populations and those of other coldwater fish species (e.g., slimy sculpin) to persist from year to year. Coldwater streams in Michigan typically provide these conditions due to substantial contributions of groundwater to their stream flows. Such streams are established by Director's action and designated as trout resources by Fisheries Order 210.
SCA	Concentrated Recreation Area	Facilities that are designed and maintained for routine or heavy recreational use, including State Parks, State Forest campgrounds, motorized and non-motorized trails, trailheads, staging areas and public access sites.
SCA	Potential Old Growth Areas	This category contains stands were identified for a broad range of reasons and were coded in the OI database as stand condition 8 as potential old growth (POG). Approximately 310,000 acres have been identified through the Operations Inventory (OI)/Compartment Review process. For stands in Year of Entry 2008 and forward, potential old growth is managed for the identified objective until it is: 1) vetted through the Biodiversity Conservation Planning Process (BCPP) and given a specific designation and objective (as an ERA, HCVA, or other type of SCA) and is released from the potential old growth designation; or 2) it is released from the potential old growth designation via the Compartment Review process.