



Compartment Review Presentation

Traverse City Forest Management Unit

Compartment 61163

Entry Year 2024

Acreage: 1,692

County Kalkaska

Management Area: Boardman Plains

Stand Examiner: Paul Roell

Legal Description:

Sections 7-11 & 14-15, T27N-R7W

Identified Planning Goals:

Vegetation management in the Boardman Plains management area will provide forest products; maintain or enhance wildlife habitat; protect areas of unique character including the Boardman River (a designated natural river) and the Sand Lakes Quiet Area (a designated high conservation value area), threatened, endangered and special concern species; and provide for forest-based recreational uses. Timber management objectives for this planning period include improving the age-class structure of aspen; increasing regeneration of oak; working toward balancing the red pine age-class structure; continuing emphasis on managing the northern hardwood resource for stand quality, age, and species diversity; wildlife values; and continued production of wood products. Wildlife habitat management objectives include perpetuating early-successional communities for species adapted to young forests for hunting and other wildlife-related recreation opportunity. Expected challenges within this 10-year planning period include: increased recreational pressure; increased oil and gas development; an increased wildland/urban interface; a need to restore oak/pine barrens communities; invasive plant control; and the conversion of poor oak sites to mixed pine/oak sites.

Soil and topography:

Soils range from Rubicon sand to Kalkaska Loamy Sand. This compartment has very little topography but management will be difficult in some of the wetter areas and really sandy areas.

Ownership Patterns, Development, and Land Use in and Around the Compartment:

The compartment is the transition of the Village of Kalkaska to the adjacent State land. Development and expansion of the area is exerting pressure on state land. There is some oil & gas activity within the compartment.

Unique Natural Features:

Potential for Kirtland's warbler and prairie warbler in young jack pine and upland brush, great blue heron rookery, wood turtle, eastern massasauga, and little brown bat.

Archeological, Historical, and Cultural Features:

2004 Comments: None Listed

Special Management Designations or Considerations:

There is Natural River Considerations for the North Branch of the Boardman River.

Watershed and Fisheries Considerations:

2004 Fisheries comments: The Little Rapid River, the North Branch of the Boardman River, and several inland lakes are located within Compartment 163. At one time Log Lake was stocked annually with rainbow trout by Fisheries Division. The Little Rapid River and the North Branch of the Boardman River are Designated Trout Streams with naturally reproducing populations of brook and brown trout.

Wildlife Habitat Considerations:

This compartment is adjacent to the city of Kalkaska and has been managed for mixed use with an emphasis on maintaining a variety of cover types and age classes for game and non-game wildlife. This emphasis coincides well with the fire driven dynamics of the dominant local Land Type Associations (LTA). Two large tracts of pitted outwash plain enter this compartment from the north and west. These outwash plains show a history of wildfires and less frequently, windfalls. Consequently, in the past a variety of forest types and age classes were found, including: the entire spectrum of conifer dominated forests, jack pine and oak/pine savannas, to northern hardwoods in "fire shadow" areas. This area should continue to be managed to perpetuate a variety of forest types and successional stages related to a fire prone community. Timber prescriptions should be designed to incorporate live leave trees, leave islands, and snags to mimic a wildfire. Some stands that fall in the "fire shadow" of streams and wetlands could be allowed to succeed to later successional species to add diversity of the area. Cuts in this community type should be designed to leave standing dead timber and scattered leave trees/islands for a component of structural diversity in regenerating stands of timber. This type of habitat mosaic supports wildlife species such as black bear, white-tailed deer, wild turkeys, pine warblers, northern goshawks, and

box turtles. Several upland brush types and grassy openings have been prescribed for burning to promote existing native warm season grasses.

A flat, excessively drained outwash plain makes up part of the State land in this compartment. Cuts that abut wetlands and/or drainages should incorporate a tree length buffer. The buffer will provide cavity trees, downed logs, an influx of nutrients, as well as shade for maintaining microhabitat conditions along these riparian habitats. Existing coniferous wetlands and lowland hardwoods should be managed toward later successional communities. Declining alder and willow stands should be cut during winter to stimulate regeneration of these lowland shrubs. Conifer dominated wetlands and lowland shrub swamps, in association with dry upland inclusions, provide habitat for white-tailed deer, snowshoe hare, bobcat, woodcock, evening grosbeaks, and massasauga rattlesnakes.

One final landtype exists within this compartment on state land, a narrow outwash channel. This glacial landform consists of channels of poorly drained peats and mucks with steep valley walls and often incorporates a stream or river, in this case a branch of the Rapid River. Pre-settlement vegetation was a mix of coniferous and hardwood swamps with inclusions of upland conifers. No cuts have been proposed this entry period and consideration should be given to letting stands on this LTA naturally succeed. However, small patch cuts could be conducted that would mimic the occasional fire or wind throw that occurred in this community type. Wildlife species that may potentially be found here include bobcats, deer, northern saw-whet owls, and wood turtles near larger streams.

Mineral Resource and Development Concerns and/or Restrictions

The nearest active sand/gravel pit is about three miles north. There is potential for sand and gravel within the compartment, but any surface mining would need to avoid oil & gas infrastructure and could be further inhibited by wetlands. The compartment is within the Silurian reef trend and several successful wells have been drilled in and around the compartment; some are still producing. There may be potential for additional reef discoveries beneath the compartment as well as potential for gas storage. Most of the State-owned mineral rights in the compartment are currently leased and held by production. There is no known metallic mineral potential in this part of the state.

Vehicle Access:

There are numerous forest roads and county roads throughout the compartment that provide plenty of access. Some of the forest roads are poor quality but are still navigable with a 4-wheel drive vehicle.

Survey Needs:

None needed at this time.

Recreational Facilities and Opportunities:

This compartment contains a variety of recreational trails. The non-motorized trails include the North Country Scenic Trail, and the Shore to Shore Equestrian trail. The motorized recreational trails include the Leetsville ORV Trail, and the Michigan Cross Country Cycle Trail (MCCCT). Trail protection specifications relevant to the specific type of trail should be used within stands being treated. Communication between the forester, and the appropriate recreation staff is needed to coordinate timber harvest activities impacting the Shore to Shore equestrian trail. Winter cuts are preferred when adjacent to all recreational trails to reduce user conflicts.

Fire Protection:

Since the compartment is close to the Kalkaska Field Office, fire response times are minimal. Just a few red pine stands scattered throughout the compartment are the only real concern, plus most have good access along main roads.

Additional Compartment Information:

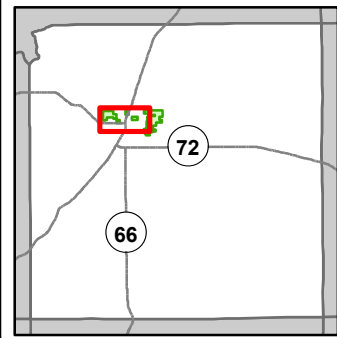
The following reports from the Inventory are attached:

- Total Acres by Cover Type and Age Class**
- Cover Type by Harvest Method**
- Proposed Treatments – No Limiting Factors**
- Proposed Treatments – With Limiting Factors**
- Stand Details (Forested and Nonforested)**
- Dedicated and Proposed Special Conservation Areas**
- Site Condition Details**

The following information is displayed, where pertinent, on the attached compartment maps:

- Base feature information, stand boundaries, cover types, and numbers**
- Proposed treatments**
- Site condition boundaries**
- Details on the road access system**

Special Conservation Areas



Compartment: 163
 T27N R07W Sec. 7-15
 County: Kalkaska
 Unit: Traverse City
 Mgmt Area: Boardman Plains
 YOE: 2024
 Acres: 1692.5 GIS Calculated
 Examiner: Paul Roell
 Map Revised: 10/17/2022
 Map Phase: Post Review

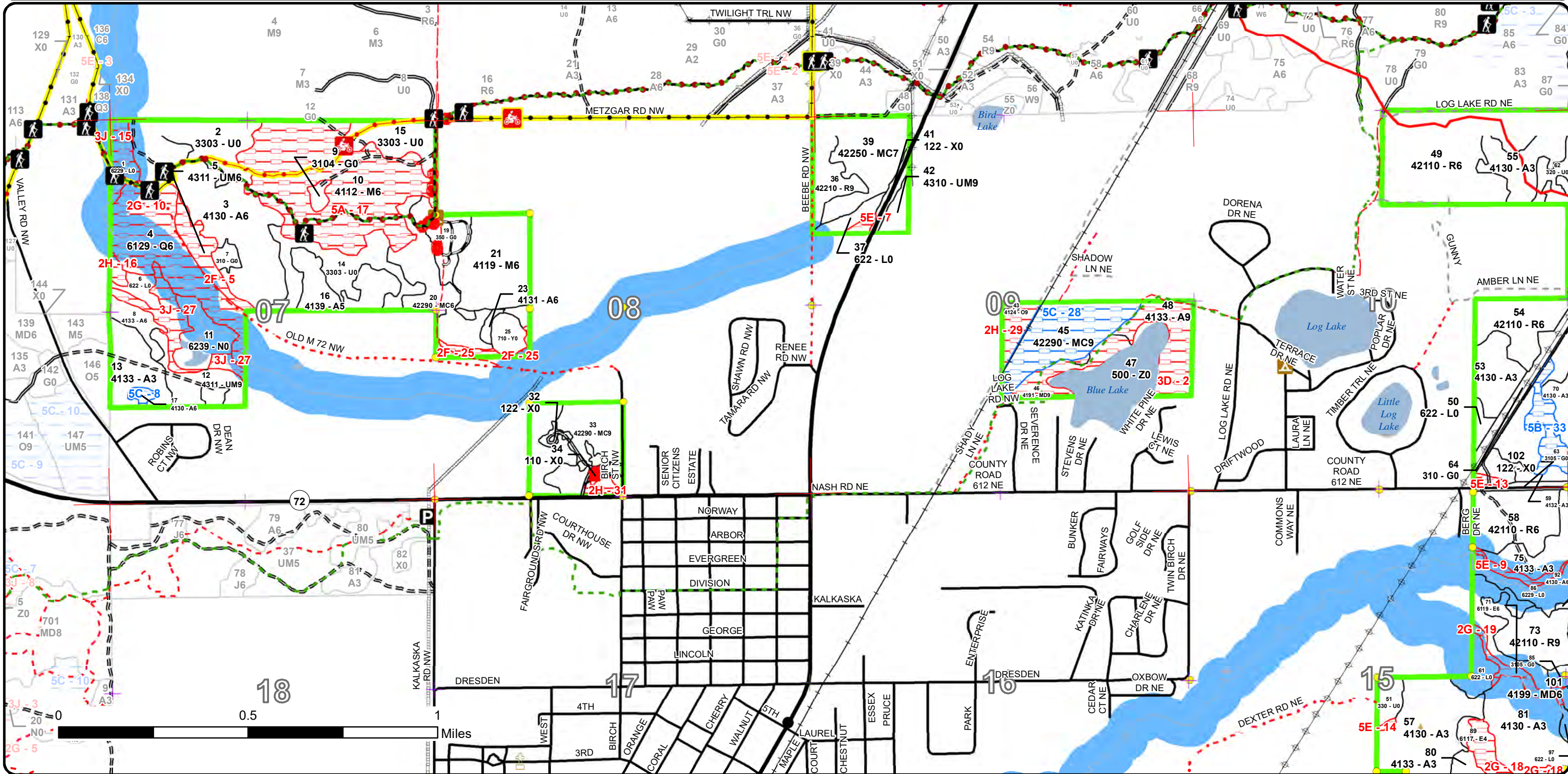
- Miris Corners
- Remonumented Section Corners
- Survey Grade Corners
- Counties
- DNR - Primary Forest Road
- DNR - Secondary Forest Road
- == DNR - Forest Access Route
- Federal / State Highway
- Federal / State / County - Paved Road
- County - Gravel Road
- County - Dirt Road (Seasonal)
- Private - Dirt / Gravel Road
- Active Railroads
- Hiking Trails

- Horse Trails
- Motorcycle Trails (DNR License)
- MCCCT Trails
- Designated Hiking Trails
- Designated Bicycle Trails
- Designated Equestrian Trails
- Designated Multi-Use Trails
- ORV License
- ORV License & Trail Permit
- Designated ATV Trails
- Michigan Cross Country Cycle Trail (MCCCT)
- Cabin

- ▲ Berms
- ▲ Campground
- City
- P Parking Lot
- Sign
- Lake/Pond
- Perennial River
- Lakes and Rivers
- Pipeline
- Powerline
- Compartment Boundary
- Available w/ Constraints
- 5B: Maintain for regeneration purposes

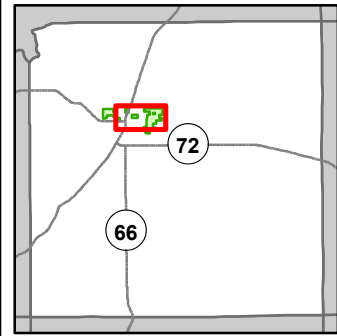
- 5C: Delay treatment for age/size class diversity or exceptional site quality
- Unavailable
- 2F: Too steep
- 2G: Too wet (sensitive soils, does not include access issues)
- 2H: Blocked by physical obstacle (e.g. upland stand in a lowland area)
- 3D: Recreational / Scenic values
- 3J: Water quality / BMPs (stream, river, or lake)
- 5A: Not able to obtain desirable regeneration
- 5E: Long-Term Retention
- Stand Boundaries

- Cold Water Streams
- High Priority Trout Stream Buffer



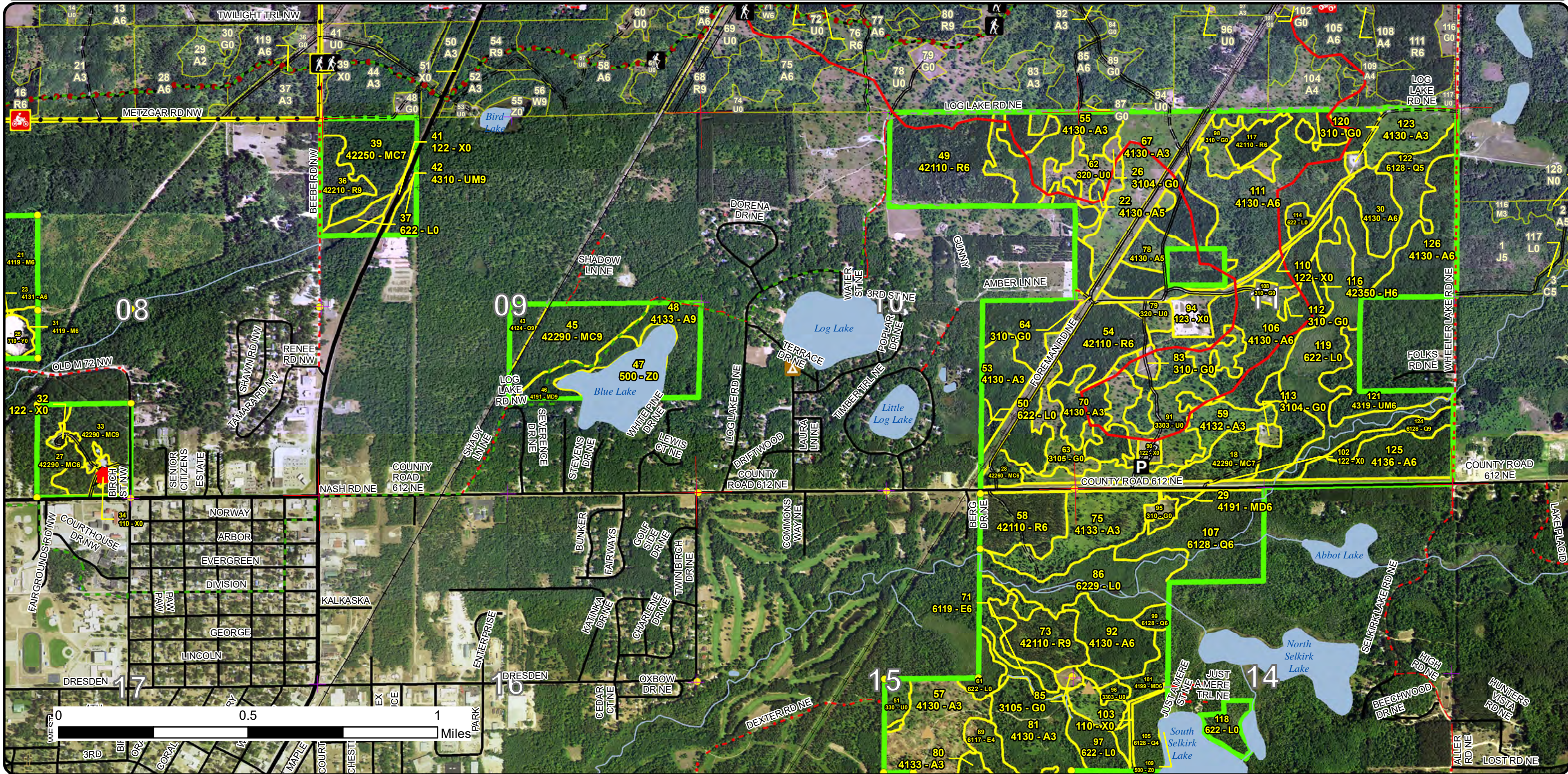
Stand Boundary Map

Compartment: 163
 T27N R07W Sec. 7-15
 County: Kalkaska
 Unit: Traverse City
 Mgmt Area: Boardman Plains
 YOE: 2024
 Acres: 1692.5 GIS Calculated
 Examiner: Paul Roell
 Map Revised: 10/17/2022
 Map Phase: Post Review



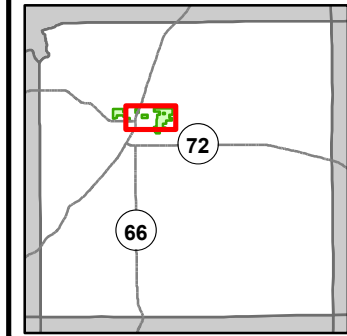
- Miris Corners
- + Remonumented Section Corners
- Survey Grade Corners
- Counties
- DNR - Secondary Forest Road
- DNR - Forest Access Route
- Federal / State Highway
- Federal / State / County - Paved Road
- County - Gravel Road
- County - Dirt Road (Seasonal)
- Private - Dirt / Gravel Road
- Active Railroads
- Hiking Trails
- Horse Trails
- MCCCT Trails
- Designated Hiking Trails
- Designated Equestrian Trails
- Designated Multi-Use Trails
- ORV License
- Designated ATV Trails
- Michigan Cross Country Cycle Trail (MCCCT)
- ▲ Cabin
- ▲ Berms
- ▲ Campground
- City

- P Parking Lot
- Lake/Pond
- Perennial River
- Lakes and Rivers
- Pipeline
- Powerline
- Compartment Boundary
- Stand Boundaries
- 411 - Northern Hardwood
- 412 - Oak Types
- 413 - Aspen
- 419 - Mixed Upland Deciduous
- 421 - Planted Pines
- 422 - Natural Pines
- 423 - Other Upland Conifers
- 430 - Upland Mixed Forest
- 611 - Lowland Deciduous Forest
- 612 - Lowland Coniferous Forest
- 110 - Low Intensity Urban
- 122 - Roads/Parking Lot
- 123 - Other High Intensity Urban
- 310 - Herbaceous Openland
- 320 - Upland Shrub
- 330 - Low Density Trees
- 500 - Water
- 622 - Lowland Shrub
- 710 - Sand/Soil

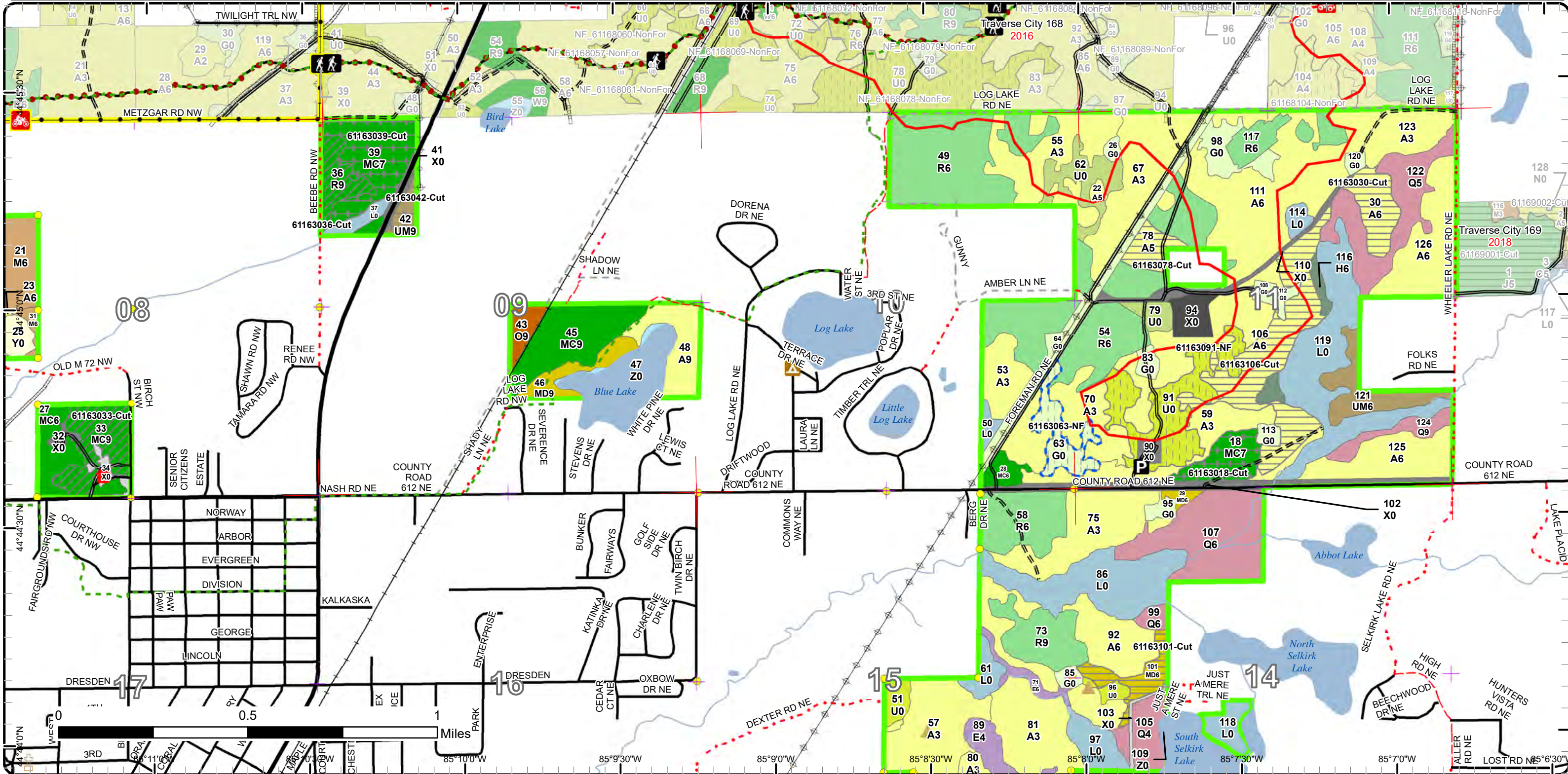


Cover Type & Treatments Map

Compartment: 163
 T27N R07W Sec. 7-15
 County: Kalkaska
 Unit: Traverse City
 Mgmt Area: Boardman Plains
 YOE: 2024
 Acres: 1692.5 GIS Calculated
 Examiner: Paul Roell
 Map Revised: 10/17/2022
 Map Phase: Post Review

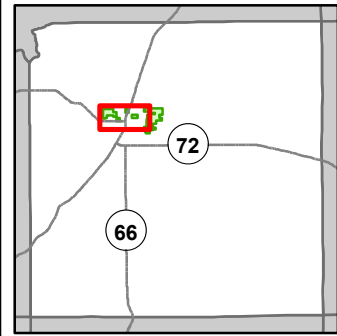


- Miris Corners
- Remonumented Section Corners
- Survey Grade Corners
- Counties
- DNR - Secondary Forest Road
- DNR - Forest Access Route
- Federal / State Highway
- Federal / State / County - Paved Road
- County - Gravel Road
- County - Dirt Road (Seasonal)
- Private - Dirt / Gravel Road
- Active Railroads
- Hiking Trails
- Horse Trails
- MCCCT Trails
- Designated Hiking Trails
- Designated Equestrian Trails
- Designated Multi-Use Trails
- ORV License
- Designated ATV Trails
- Michigan Cross Country Cycle Trail (MCCCT)
- Cabin
- Berms
- Campground
- City
- Parking Lot
- Lake/Pond
- Perennial River
- Lakes and Rivers
- Pipeline
- Powerline
- Compartment Boundary
- Treatments with Site Conditions
- Clearcut (w/Reserves)
- Harvest, Overstory Removal
- Thinning (Crown, Low, Systematic)
- Opening Maintenance
- 411 - Northern Hardwood
- 412 - Oak Types
- 413 - Aspen
- 419 - Mixed Upland Deciduous
- 421 - Planted Pines
- 422 - Natural Pines
- 423 - Other Upland Conifers
- 430 - Upland Mixed Forest
- 611 - Lowland Deciduous Forest
- 612 - Lowland Coniferous Forest
- 110 - Low Intensity Urban
- 122 - Roads/Parking Lot
- 123 - Other High Intensity Urban
- 310 - Herbaceous Openland
- 320 - Upland Shrub
- 330 - Low Density Trees
- 500 - Water
- 622 - Lowland Shrub
- 710 - Sand/Soil



Stand Boundary Map

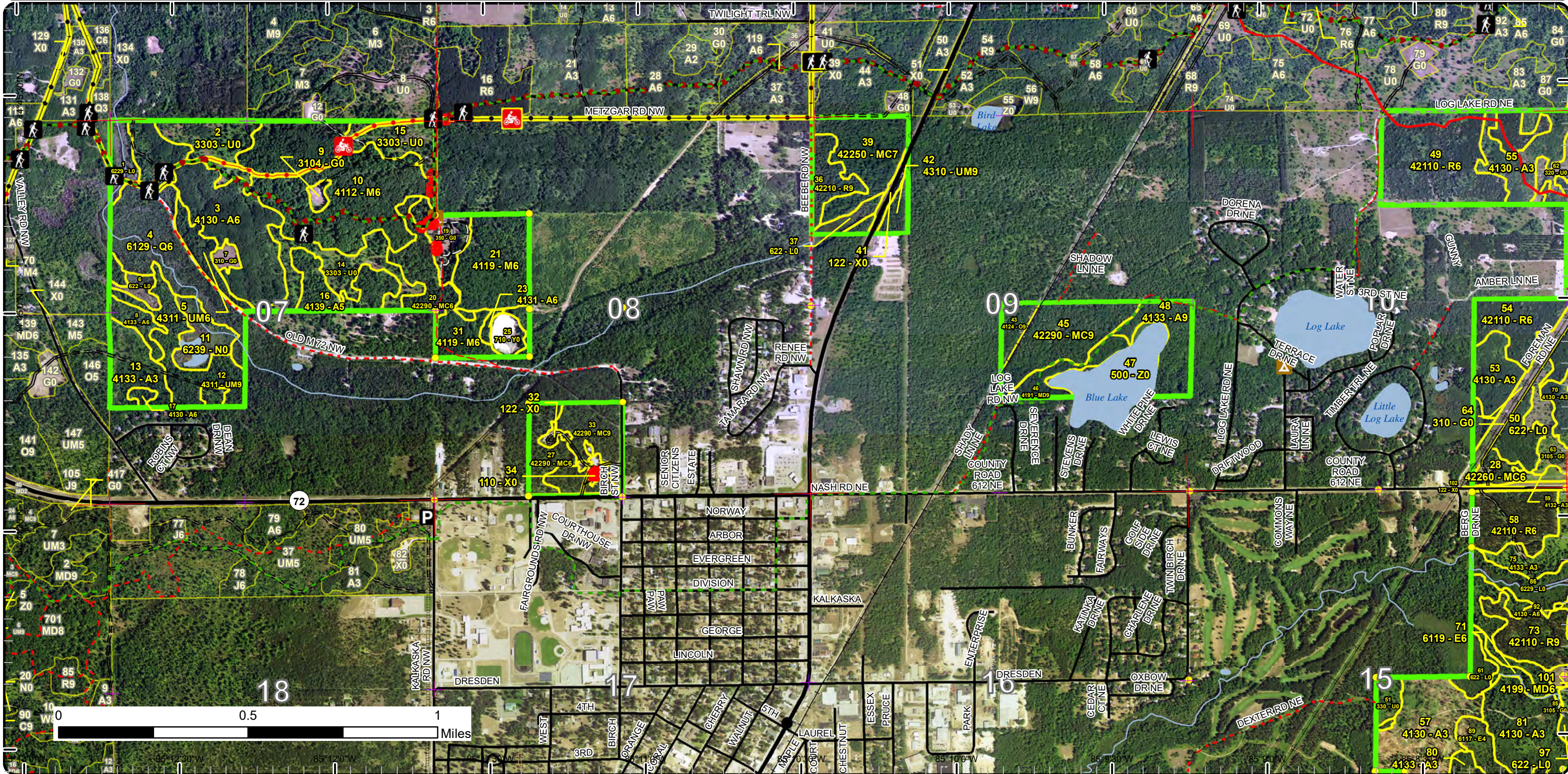
Compartment: 163
 T27N R07W Sec. 7-15
 County: Kalkaska
 Unit: Traverse City
 Mgmt Area: Boardman Plains
 YOE: 2024
 Acres: 1692.5 GIS Calculated
 Examiner: Paul Roell
 Map Revised: 10/17/2022
 Map Phase: Post Review



- Miris Corners
- + Remonumented Section Corners
- Survey Grade Corners
- Counties
- DNR - Primary Forest Road
- DNR - Secondary Forest Road
- DNR - Forest Access Route
- Federal / State Highway
- Federal / State / County - Paved Road
- County - Gravel Road
- County - Dirt Road (Seasonal)
- Private - Dirt / Gravel Road
- Active Railroads
- Hiking Trails
- Horse Trails
- Motorcycle Trails (DNR License)
- MCCCT Trails
- Designated Hiking Trails
- Designated Bicycle Trails
- Designated Equestrian Trails
- Designated Multi-Use Trails
- ORV License
- ORV License & Trail Permit
- Designated ATV Trails
- Michigan Cross Country Cycle Trail (MCCCT)
- Cabin

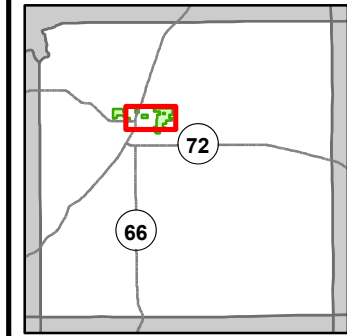
- ▲ Berms
- ▲ Campground
- City
- P Parking Lot
- Sign
- Lake/Pond
- Perennial River
- Lakes and Rivers
- Pipeline
- Powerline
- Compartment Boundary
- Stand Boundaries
- 411 - Northern Hardwood
- 412 - Oak Types

- 413 - Aspen
- 419 - Mixed Upland Deciduous
- 421 - Planted Pines
- 422 - Natural Pines
- 430 - Upland Mixed Forest
- 611 - Lowland Deciduous Forest
- 612 - Lowland Coniferous Forest
- 110 - Low Intensity Urban
- 122 - Roads/Parking Lot
- 310 - Herbaceous Openland
- 320 - Upland Shrub
- 330 - Low Density Trees
- 350 - Parks/Golf Courses
- 500 - Water
- 622 - Lowland Shrub
- 623 - Emergent Wetland
- 710 - Sand/Soil



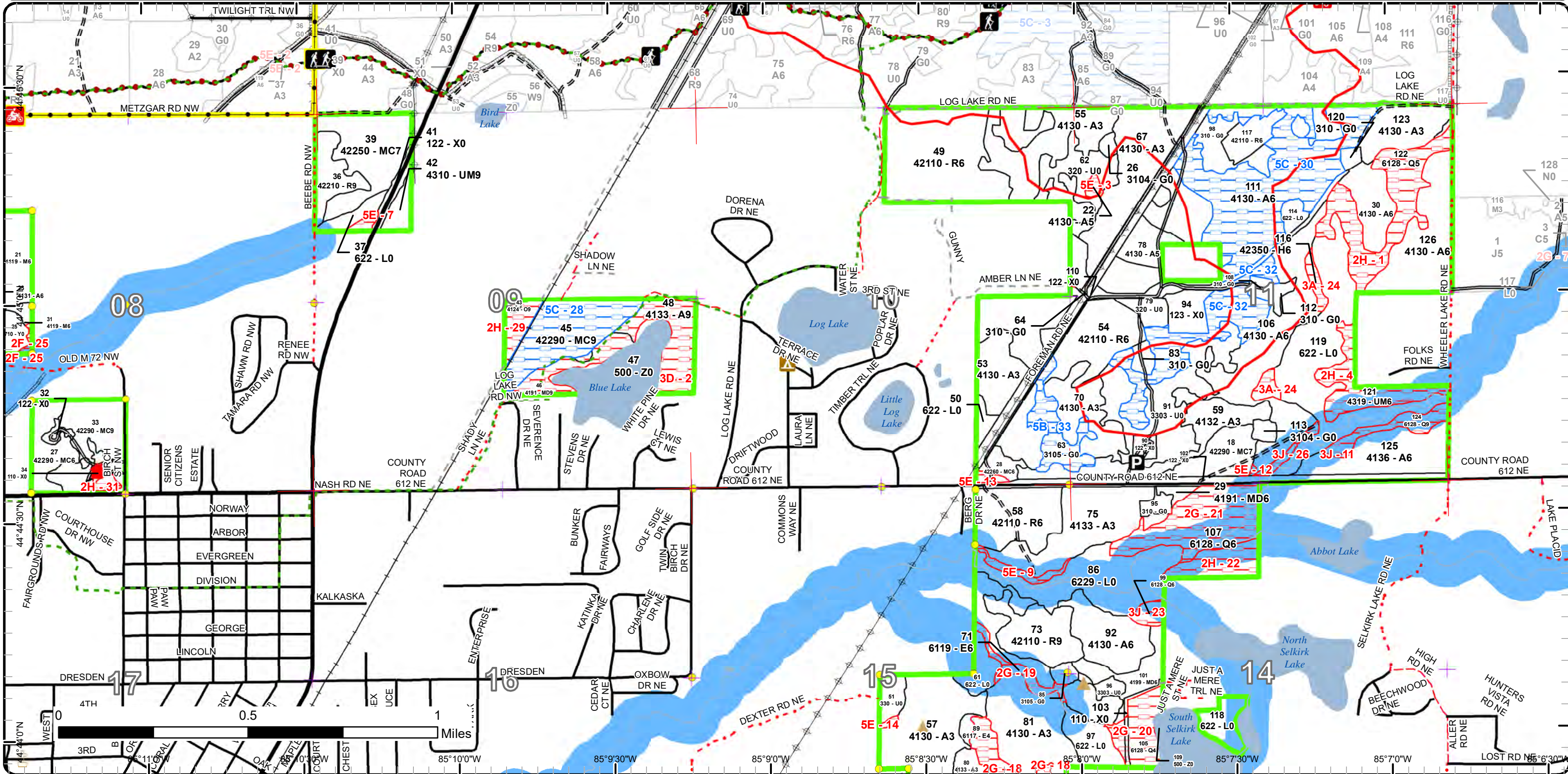
Special Conservation Areas

Compartment: 163
 T27N R07W Sec. 7-15
 County: Kalkaska
 Unit: Traverse City
 Mgmt Area: Boardman Plains
 YOE: 2024
 Acres: 1692.5 GIS Calculated
 Examiner: Paul Roell
 Map Revised: 10/17/2022
 Map Phase: Post Review



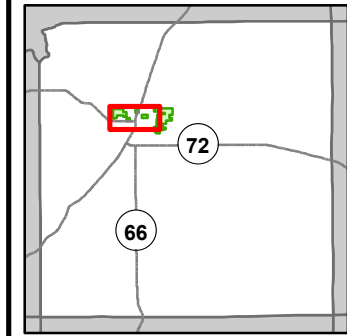
- Miris Corners
- + Remonumented Section Corners
- Survey Grade Corners
- Counties
- DNR - Secondary Forest Road
- DNR - Forest Access Route
- Federal / State Highway
- Federal / State / County - Paved Road
- County - Gravel Road
- County - Dirt Road (Seasonal)
- Private - Dirt / Gravel Road
- Active Railroads
- Hiking Trails
- Horse Trails
- MCCCT Trails
- Designated Hiking Trails
- Designated Equestrian Trails
- Designated Multi-Use Trails
- ORV License
- Designated ATV Trails
- Michigan Cross Country Cycle Trail (MCCCT)
- ▲ Cabin
- ▲ Berms
- ▲ Campground
- City

- P Parking Lot
- Lake/Pond
- Perennial River
- Lakes and Rivers
- Pipeline
- Powerline
- Compartment Boundary
- Available w/ Constraints
- 5B: Maintain for regeneration purposes
- 5C: Delay treatment for age/size class diversity or exceptional site quality
- Unavailable
- 2F: Too steep
- 2G: Too wet (sensitive soils, does not include access issues)
- 2H: Blocked by physical obstacle (e.g. upland stand in a lowland area)
- 3A: Conservation Values incompatible with harvest at this time
- 3D: Recreational / Scenic values
- 3J: Water quality / BMPs (stream, river, or lake)
- 5E: Long-Term Retention
- Stand Boundaries
- Cold Water Streams
- High Priority Trout Stream Buffer

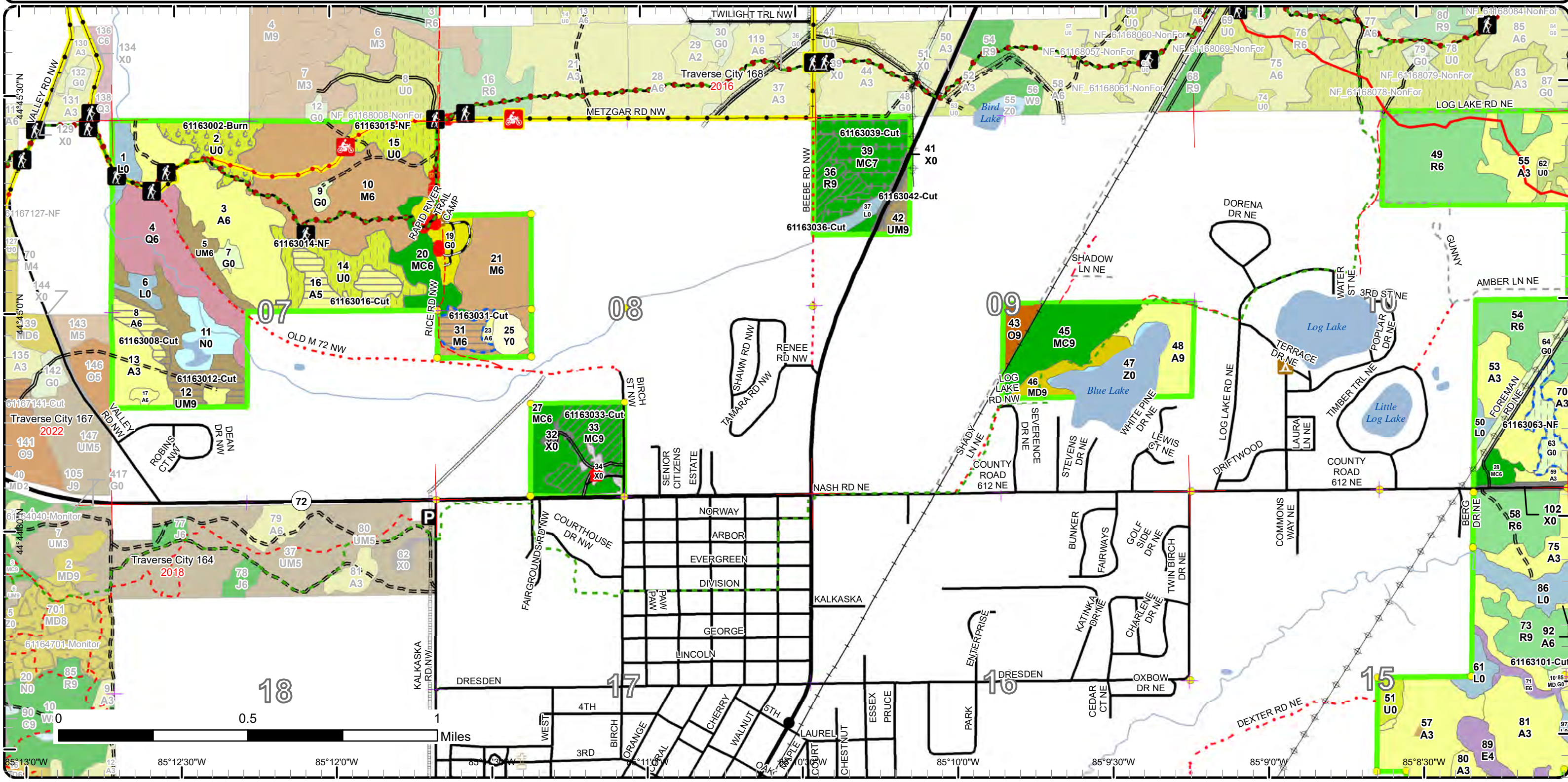


Cover Type & Treatments Map

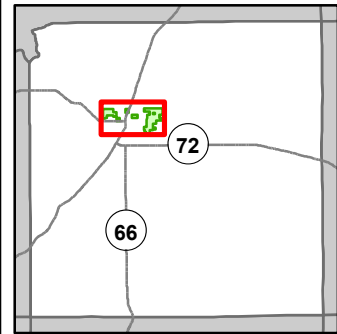
Compartment: 163
 T27N R07W Sec. 7-15
 County: Kalkaska
 Unit: Traverse City
 Mgmt Area: Boardman Plains
 YOE: 2024
 Acres: 1692.5 GIS Calculated
 Examiner: Paul Roell
 Map Revised: 10/17/2022
 Map Phase: Post Review



- | | | | | |
|---|--|---|---|--|
| <ul style="list-style-type: none"> — Miris Corners — Remonumented Section Corners ● Survey Grade Corners --- Counties — DNR - Primary Forest Road — DNR - Secondary Forest Road == DNR - Forest Access Route — Federal / State Highway — Federal / State / County - Paved Road - - - County - Gravel Road - - - County - Dirt Road (Seasonal) - - - Private - Dirt / Gravel Road — Active Railroads — Hiking Trails | <ul style="list-style-type: none"> — Horse Trails — Motorcycle Trails (DNR License) — MCCCT Trails — Designated Hiking Trails — Designated Bicycle Trails — Designated Equestrian Trails — Designated Multi-Use Trails — ORV License — ORV License & Trail Permit — Designated ATV Trails — Michigan Cross Country Cycle Trail (MCCCT) — Cabin | <ul style="list-style-type: none"> ▲ Berms ▲ Campground ● City P Parking Lot ● Sign — Lake/Pond — Perennial River — Lakes and Rivers — Pipeline — Powerline — Compartment Boundary — Treatments with Site Conditions — Clearcut (w/Reserves) — Harvest, Overstory Removal | <ul style="list-style-type: none"> — Prescribed Burn — Thinning (Crown, Low, Systematic) — Opening Maintenance — 411 - Northern Hardwood — 412 - Oak Types — 413 - Aspen — 419 - Mixed Upland Deciduous — 421 - Planted Pines — 422 - Natural Pines — 430 - Upland Mixed Forest — 611 - Lowland Deciduous Forest — 612 - Lowland Coniferous Forest — 110 - Low Intensity Urban — 122 - Roads/Parking Lot — 310 - Herbaceous Openland | <ul style="list-style-type: none"> — 320 - Upland Shrub — 330 - Low Density Trees — 350 - Parks/Golf Courses — 500 - Water — 622 - Lowland Shrub — 623 - Emergent Wetland — 710 - Sand/Soil |
|---|--|---|---|--|

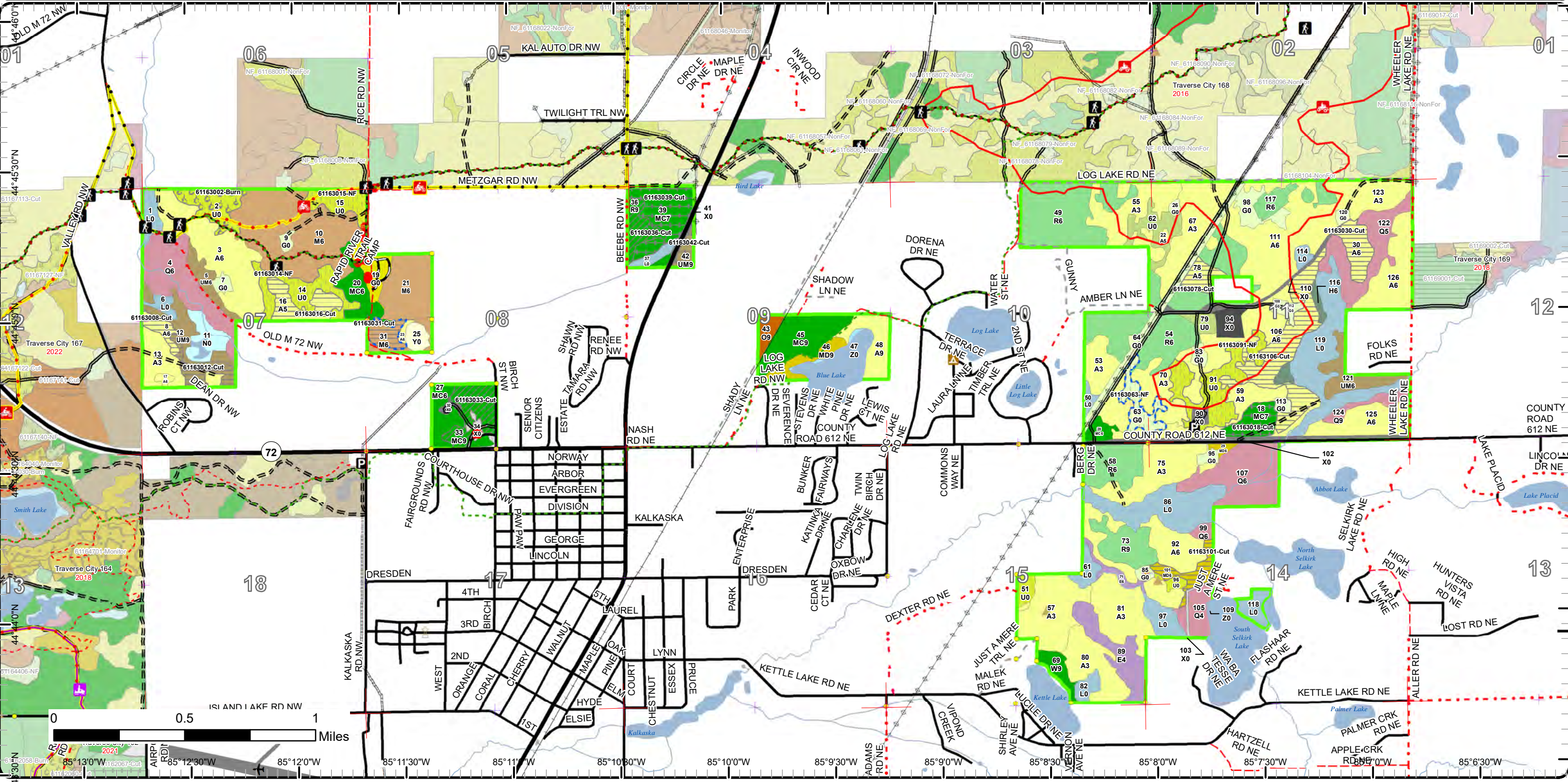


Cover Type & Treatments Map



Compartment: 163
 T27N R07W Sec. 7-15
 County: Kalkaska
 Unit: Traverse City
 Mgmt Area: Boardman Plains
 YOE: 2024
 Acres: 1692.5 GIS Calculated
 Examiner: Paul Roell
 Map Revised: 10/17/2022
 Map Phase: Post Review

- Miris Corners
- + Remonumented Section Corners
- Survey Grade Corners
- Counties
- DNR - Primary Forest Road
- DNR - Secondary Forest Road
- DNR - Forest Access Route
- Federal / State Highway
- Federal / State / County - Paved Road
- County - Gravel Road
- County - Dirt Road (Seasonal)
- Private - Dirt / Gravel Road
- Active Railroads
- Hiking Trails
- Horse Trails
- Motorcycle Trails (DNR License)
- MCCCT Trails
- ORV Trails
- Snowmobile Trails
- Designated Hiking Trails
- Designated Bicycle Trails
- Designated Equestrian Trails
- Designated Multi-Use Trails
- ORV License
- ORV License & Trail Permit
- Designated ATV Trails
- Designated Snowmobile Trails
- Michigan Cross Country Cycle Trail (MCCCT)
- ▲ Cabin
- ▲ Berms
- ▲ Campground
- ▲ Cemetery
- City
- P Parking Lot
- Sign
- Lake/Pond
- Perennial River
- Lakes and Rivers
- Pipeline
- Powerline
- Airports
- Compartment Boundary
- Treatments with Site Conditions
- Clearcut (w/Reserves)
- Harvest, Overstory Removal
- Prescribed Burn
- Thinning (Crown, Low, Systematic)
- Opening Maintenance
- 411 - Northern Hardwood
- 412 - Oak Types
- 413 - Aspen
- 419 - Mixed Upland Deciduous
- 421 - Planted Pines
- 422 - Natural Pines
- 423 - Other Upland Conifers
- 430 - Upland Mixed Forest
- 611 - Lowland Deciduous Forest
- 612 - Lowland Coniferous Forest
- 110 - Low Intensity Urban
- 122 - Roads/Parking Lot
- 123 - Other High Intensity Urban
- 310 - Herbaceous Openland
- 320 - Upland Shrub
- 330 - Low Density Trees
- 350 - Parks/Golf Courses
- 500 - Water
- 622 - Lowland Shrub
- 623 - Emergent Wetland
- 710 - Sand/Soil



Report 1 – Total Acres by Cover Type and Age Class



Age Class

	Non-Forest	0-9	10-19	20-29	30-39	40-49	50-59	60-69	70-79	80-89	90-99	100-109	110-119	120-129	130-139	140-149	150+	Uneven-Aged	Total
Aspen	0	140	85	41	83	71	178	6	19	0	0	0	0	0	0	0	0	0	621
Hemlock	0	0	0	0	0	0	0	0	0	0	5	0	0	0	0	0	0	0	5
Herbaceous Openland	76	0	0	0	0	0	0	0	0	0	0	0	0	0	0	0	0	0	76
Low-Density Trees	92	0	0	0	0	0	0	0	0	0	0	0	0	0	0	0	0	0	91
Lowland Conifers	0	0	0	0	0	0	12	32	0	38	47	0	0	0	0	0	0	0	129
Lowland Deciduous	0	0	0	0	0	0	23	5	0	0	0	0	0	0	0	0	0	0	27
Lowland Shrub	133	0	0	0	0	0	0	0	0	0	0	0	0	0	0	0	0	0	133
Marsh	12	0	0	0	0	0	0	0	0	0	0	0	0	0	0	0	0	0	12
Mixed Upland Deciduous	0	0	0	0	0	0	2	10	0	9	0	0	0	0	0	0	0	0	21
Natural Mixed Pines	0	0	0	0	12	0	0	13	97	0	0	0	0	0	0	0	0	0	122
Northern Hardwood	0	0	0	0	0	0	0	29	13	74	0	0	0	0	0	0	0	0	115
Oak	0	0	0	0	0	0	0	0	0	0	6	0	0	0	0	0	0	0	6
Red Pine	0	0	0	128	0	0	22	19	11	0	0	0	0	0	0	0	0	0	180
Sand, Soil	5	0	0	0	0	0	0	0	0	0	0	0	0	0	0	0	0	0	5
Upland Mixed Forest	0	0	0	0	0	0	9	0	16	30	0	0	0	0	0	0	0	0	55
Upland Shrub	18	0	0	0	0	0	0	0	0	0	0	0	0	0	0	0	0	0	18
Urban	46	0	0	0	0	0	0	0	0	0	0	0	0	0	0	0	0	0	46
Water	21	0	0	0	0	0	0	0	0	0	0	0	0	0	0	0	0	0	21
White Pine	0	0	0	0	0	0	0	0	0	0	8	0	0	0	0	0	0	0	8
Total	403	140	85	169	95	71	246	114	156	151	66	0	0	0	0	0	0	0	1691



Report 2 – Treatment Summary

Traverse City Mgt. Unit
Year of Entry: 2024

Acres of Harvest

Compartment 163
Total Compartment Acres: 1,692

Commercial Harvest - 180
Harvests with Site Condition - 8
Next Step Harvest - 0
Habitat Cut - 0

Cover Type by Harvest Method

	Clearcut	Selection	Patch Clearcut	Seed Tree	Shelterwood	Thinning	Overstory Removal	Salvage	Other	Total Acres
Aspen	85	0	0	0	0	0	0	0	0	85
Mixed Upland Deciduous	10	0	0	0	0	0	0	0	0	10
Natural Mixed Pines	0	0	0	0	0	20	39	0	0	58
Northern Hardwood	8	0	0	0	0	0	0	0	0	8
Red Pine	0	0	0	0	0	11	0	0	0	11
Upland Mixed Forest	12	0	0	0	0	0	5	0	0	16
Total	114	0	0	0	0	30	44	0	0	188

Proposed and Next Step Treatments by Method

	Harvest	Site Prep	Planting	Seeding	Burning	Pesticide	Monitoring	Other	Non-Forest Mgt.	Total Acres
Current	188	0	0	0	17	0	0	0	80	284
Next Step	0	0	0	0	36	0	114	0	17	167
Total	188	0	0	0	53	0	114	0	97	451



S t a n d	Treatment Name	Acres	Stand CoverType	Size Density	Stand Age	BA Range	Treatment Type	Treatment Method	Cover Type Objective	Age Structure	Habitat Cut
-----------------------	-------------------	-------	--------------------	-----------------	--------------	-------------	-------------------	---------------------	-------------------------	------------------	----------------

Approved Treatments:

2	61163002-Burn	17.2	3303 - Mixed Low Density Trees	Nonstocked			Burn	Opening	3205 - Mixed Upland Shrub		No
<p><u>Prescription Specs:</u> Burn on a rotational basis. The goal of prescribed burning is to restore and/or maintain a grassland/barrens ecosystem. The timing and frequency of the burns will be based on current needs of restoration such as reducing woody encroachment or promoting grasses versus forbs. Remove exotics as needed by herbiciding or other methods. Maintain as needed with mowing, seeding of native grasses and forbs, planting native mast bearing shrubs or trees, burning, or removal of woody encroachment.</p> <p><u>Next Step Treatments:</u> NonForestMgt, Other - Specify</p> <p><u>Acceptable Regen:</u></p> <p><u>Other Comment:</u></p> <p><u>Site Condition</u></p> <p><u>Proposed Start Date:</u> 10/1 /2023</p>											
8	61163008-Cut	6.0	4133 - Aspen, Mixed Pine	Poletimber Well	65	1-50	Harvest	Clearcut	413 - Aspen	Even-Aged	No
<p><u>Prescription Specs:</u> Cut all trees 4 inches in diameter and larger. Mark some scattered pine and white oaks to leave for diversity and visual concerns. No retention to maximize regeneration of the small stand with high deer browse pressure.</p> <p><u>Next Step Treatments:</u> Monitoring, Natural Regen (Re-Inventory)</p> <p><u>Acceptable Regen:</u> aspen, red maple and mixed conifer</p> <p><u>Other Comment:</u></p> <p><u>Site Condition</u></p> <p><u>Proposed Start Date:</u> 10/1 /2023</p>											
12	61163012-Cut	11.5	4311 - Pine, Aspen Mix	Sawtimber Well	86	111-140	Harvest	Clearcut with Retention	413 - Aspen	Even-Aged	No
<p><u>Prescription Specs:</u> Cut all trees 4 inches and larger leave tree mark or designated some pines and oak for diversity and visual concerns. Area retention will be covered by the adjacent uncut portion of the stand.</p> <p><u>Next Step Treatments:</u> Monitoring, Natural Regen (Re-Inventory)</p> <p><u>Acceptable Regen:</u> aspen, red maple and mixed conifer</p> <p><u>Other Comment:</u></p> <p><u>Site Condition</u></p> <p><u>Proposed Start Date:</u> 10/1 /2023</p>											



S
t
a
n
d

Treatment Name	Acres	Stand CoverType	Size Density	Stand Age	BA Range	Treatment Type	Treatment Method	Cover Type Objective	Age Structure	Habitat Cut
----------------	-------	-----------------	--------------	-----------	----------	----------------	------------------	----------------------	---------------	-------------

14	61163014-NF	21.3	3303 - Mixed Low Density Trees	Nonstocked			NonForestMgt	Brush Cutting	3205 - Mixed Upland Shrub	No
<p><u>Prescription</u> Hand fell or brush hog some trees to maintain opening and create some coarse woody debris. Leave scattered mast producing trees and shrubs and/or conifers for wildlife food and cover. Leave stumps to rot to provide future food source for insectivores, etc. Maintain as needed with mowing, seeding of native grasses and forbs, burning, or removal of woody encroachment.</p> <p><u>Specs:</u></p> <p><u>Next Step</u> Burn, Opening</p> <p><u>Treatments:</u></p> <p><u>Acceptable Regen:</u></p> <p><u>Other Comment:</u></p> <p><u>Site Condition</u></p> <p><u>Proposed Start Date:</u> 10/1 /2023</p>										

15	61163015-NF	14.3	3303 - Mixed Low Density Trees	Nonstocked		Immature	NonForestMgt	Brush Cutting	3205 - Mixed Upland Shrub	No
<p><u>Prescription</u> Hand fell or brush hog some trees to maintain opening and create some coarse woody debris. Leave scattered mast producing trees and shrubs and/or conifers for wildlife food and cover. Leave stumps to rot to provide future food source for insectivores, etc. Maintain as needed with mowing, seeding of native grasses and forbs, burning, or removal of woody encroachment.</p> <p><u>Specs:</u></p> <p><u>Next Step</u> Burn, Opening</p> <p><u>Treatments:</u></p> <p><u>Acceptable Regen:</u></p> <p><u>Other Comment:</u></p> <p><u>Site Condition</u></p> <p><u>Proposed Start Date:</u> 10/1 /2023</p>										

16	61163016-Cut	15.7	4139 - Aspen, Mixed Deciduous	Poetimber Medium	55	1-50	Harvest	Clearcut with Retention	413 - Aspen	Even-Aged	No
<p><u>Prescription</u> Cut all trees 4 inches and larger leave tree mark or designated some pines and oak for diversity and visual concerns. Area retention required.</p> <p><u>Specs:</u></p> <p><u>Next Step</u> Monitoring, Natural Regen (Re-Inventory)</p> <p><u>Treatments:</u></p> <p><u>Acceptable Regen:</u> aspen, red maple, oaks and possible some conifer</p> <p><u>Other Comment:</u></p> <p><u>Site Condition</u></p> <p><u>Proposed Start Date:</u> 10/1 /2023</p>											

18	61163018-Cut	12.9	42290 - Natural Mixed Pine	Sawtimber Poor	65	51-80	Harvest	Overstory Removal	413 - Aspen	Even-Aged	No
<p><u>Prescription</u> Cut all trees 4 inches and larger leave tree mark or designated some pines and oak for diversity and visual concerns.</p> <p><u>Specs:</u></p> <p><u>Next Step</u></p> <p><u>Treatments:</u></p> <p><u>Acceptable Regen:</u></p> <p><u>Other Comment:</u></p> <p><u>Site Condition</u></p> <p><u>Proposed Start Date:</u> 10/1 /2023</p>											



S
t
a
n
d

Treatment Name	Acres	Stand CoverType	Size Density	Stand Age	BA Range	Treatment Type	Treatment Method	Cover Type Objective	Age Structure	Habitat Cut
----------------	-------	-----------------	--------------	-----------	----------	----------------	------------------	----------------------	---------------	-------------

30	61163030-Cut	12.9	4130 - Aspen	Poletimber Well	55	81-110	Harvest	Clearcut with Retention	413 - Aspen	Even-Aged	No
-----------	---------------------	------	--------------	-----------------	----	--------	---------	-------------------------	-------------	-----------	----

Prescription Cut all trees 2 inches and larger leave tree mark or designated some pines and oak for diversity and visual concerns. Minimal area retention
Specs: required. Require a winter harvest because of wet access.

Next Step Monitoring, Natural Regen (Re-Inventory)
Treatments:

Acceptable aspen, red maple and mixed conifers.
Regen:

Other
Comment:

Site Condition

Proposed Start Date: 10/1 /2023

31	61163031-Cut	7.7	4119 - Mixed Northern Hardwoods	Poletimber Well	76	81-110	Harvest	Clearcut with Retention	4139 - Aspen, Mixed Deciduous	Even-Aged	No
-----------	---------------------	-----	---------------------------------	-----------------	----	--------	---------	-------------------------	-------------------------------	-----------	----

Prescription Cut all trees 4 inches and larger leave tree mark or designated some pines and oak for diversity and visual concerns.
Specs:

Next Step Monitoring, Natural Regen (Re-Inventory)
Treatments:

Acceptable aspen, oak, red maple and mixed soft wood.
Regen:

Other
Comment:

Site Condition Too Steep

Proposed Start Date: 10/1 /2023

33	61163033-Cut	19.5	42290 - Natural Mixed Pine	Sawtimber Well	76	141-170	Harvest	Crown Thinning	429 - Mixed Upland Conifers	Even-Aged	No
-----------	---------------------	------	----------------------------	----------------	----	---------	---------	----------------	-----------------------------	-----------	----

Prescription Thin stand down to 100-120 square feet of residual basal area. Mark suppressed and poorest formed trees first then target trees that are
Specs: economical mature. Harvest area is around the Kalkaska DNR and Michigan State Police office building. Extra trees may be harvested or slash management may be required by facility managers

Next Step
Treatments:

Acceptable
Regen:

Other
Comment:

Site Condition

Proposed Start Date: 10/1 /2023

36	61163036-Cut	10.6	42210 - Natural Red Pine	Sawtimber Well	74	141-170	Harvest	Crown Thinning	4221 - Natural Red Pine	Even-Aged	No
-----------	---------------------	------	--------------------------	----------------	----	---------	---------	----------------	-------------------------	-----------	----

Prescription Thin stand down to 100-120 square feet of residual basal area. Mark suppressed and poorest formed trees first then target trees that are
Specs: economical mature.

Next Step
Treatments:

Acceptable
Regen:

Other
Comment:

Site Condition

Proposed Start Date: 10/1 /2023



S
t
a
n
d

Treatment Name	Acres	Stand CoverType	Size Density	Stand Age	BA Range	Treatment Type	Treatment Method	Cover Type Objective	Age Structure	Habitat Cut
----------------	-------	-----------------	--------------	-----------	----------	----------------	------------------	----------------------	---------------	-------------

39	61163039-Cut	26.0	42250 - Pine, Oak	Sawtimber Poor	74	1-50	Harvest	Overstory Removal	413 - Aspen	Even-Aged	No
-----------	---------------------	------	-------------------	-------------------	----	------	---------	----------------------	-------------	-----------	----

Prescription Cut all overstory trees left from the previous harvest in 2005. Mark to leave some scattered large pine and leave all hemlock.
Specs:

Next Step
Treatments:

Acceptable
Regen:

Other
Comment:

Site Condition

Proposed Start Date: 10/1 /2023

42	61163042-Cut	4.6	4310 - Pine, Oak Mix	Sawtimber Well	80	171- 200	Harvest	Overstory Removal	4133 - Aspen, Mixed Pine	Even-Aged	No
-----------	---------------------	-----	-------------------------	-------------------	----	-------------	---------	----------------------	-----------------------------	-----------	----

Prescription cut all trees 6 inches and larger in diameter and mark a few larger diameters to leave. Protect the established pine understory.
Specs:

Next Step
Treatments:

Acceptable aspen mixed oak and release pine that is established
Regen:

Other
Comment:

Site Condition

Proposed Start Date: 10/1 /2023

63	61163063-NF	12.4	3105 - Mixed Upland Herbaceous	Nonstocked			NonForestMgt	Brush Cutting	3205 - Mixed Upland Shrub		No
-----------	--------------------	------	-----------------------------------	------------	--	--	--------------	---------------	------------------------------	--	----

Prescription Would be nice to brush hog around select leave trees and/or patches but terrain is pretty bumpy. If unable to brush hog, selectively hand fell woody encroachment to maintain upland brush/grassland community. Leave scattered mast producing trees and shrubs and/or conifers for wildlife food and cover.
Specs: Could plant site appropriate native shrubs and/or mast producing trees for wildlife food and cover. Fertilize plantings and protect with wire cages or tubex.

Next Step
Treatments:

Acceptable
Regen:

Other
Comment:

Site Condition Shelterwood/Seed Source

Proposed Start Date: 10/1 /2023



S
t
a
n
d

Treatment Name	Acres	Stand CoverType	Size Density	Stand Age	BA Range	Treatment Type	Treatment Method	Cover Type Objective	Age Structure	Habitat Cut
----------------	-------	-----------------	--------------	-----------	----------	----------------	------------------	----------------------	---------------	-------------

78	61163078-Cut	7.8	4130 - Aspen	Poletimber Medium	51	51-80	Harvest	Clearcut	413 - Aspen	Even-Aged	No
-----------	---------------------	-----	--------------	----------------------	----	-------	---------	----------	-------------	-----------	----

Prescription Cut all trees 4 inches and larger leave tree mark or designated some pines and oak for diversity and visual concerns. No retention required
Specs: to maximize regeneration.

Next Step Monitoring, Natural Regen (Re-Inventory)
Treatments:

Acceptable aspen, red maple, cherry and mixed conifer
Regen:

Other
Comment:

Site Condition

Proposed Start Date: 10/1 /2023

91	61163091-NF	31.6	3303 - Mixed Low Density Trees	Nonstocked			NonForestMgt	Brush Cutting	3205 - Mixed Upland Shrub		No
-----------	--------------------	------	-----------------------------------	------------	--	--	--------------	---------------	------------------------------	--	----

Prescription Would be nice to brush hog around select leave trees and/or patches but terrain is pretty bumpy. If unable to brush hog, selectively hand fell
Specs: woody encroachment to maintain upland brush/grassland community. Leave scattered mast producing trees and shrubs and/or conifers for wildlife food and cover.
Could plant site appropriate native shrubs and/or mast producing trees for wildlife food and cover. Fertilize plantings and protect with wire cages or tubex.

Next Step
Treatments:

Acceptable
Regen:

Other
Comment:

Site Condition

Proposed Start Date: 10/1 /2023

101	61163101-Cut	9.9	4199 - Other Mixed Upland Deciduous	Poletimber Well	60	51-80	Harvest	Clearcut with Retention	413 - Aspen	Even-Aged	No
------------	---------------------	-----	--	--------------------	----	-------	---------	----------------------------	-------------	-----------	----

Prescription Cut all trees 2 inches and larger leave tree mark or designated some pines and oak for diversity and visual concerns. Area retention
Specs: required.

Next Step Monitoring, Natural Regen (Re-Inventory)
Treatments:

Acceptable aspen, red maple, oaks and mixed pine.
Regen:

Other
Comment:

Site Condition

Proposed Start Date: 10/1 /2023



S
t
a
n
d

Treatment Name	Acres	Stand CoverType	Size Density	Stand Age	BA Range	Treatment Type	Treatment Method	Cover Type Objective	Age Structure	Habitat Cut
----------------	-------	-----------------	--------------	-----------	----------	----------------	------------------	----------------------	---------------	-------------

106 61163106-Cut	42.4	4130 - Aspen	Poletimber Well	55	81-110	Harvest	Clearcut with Retention	413 - Aspen	Even-Aged	No
------------------	------	--------------	-----------------	----	--------	---------	-------------------------	-------------	-----------	----

Prescription Cut all trees 2 inches and larger leave tree mark or designated some pines and oak for diversity and visual concerns. Area retention required. Sign and Protect the rec trail during the harvest

Next Step Monitoring, Natural Regen (Re-Inventory)

Treatments:

Acceptable Regen: aspen, red maple, oak, cherry and mixed pine

Other Comment:

Site Condition

Proposed Start Date: 10/1 /2023

Total Treatment Acreage Proposed: 284.3

Report 4 – Site Conditions

Traverse City Mgt. Unit
Paul Roell : Examiner

Compartment: 163
Year of Entry: 2024

Availability for Management

Total Acres	Acres Available	Acres With Condition	Acres Not Available
622	504	96	22

Dominant Site Conditions

	Total Acres	Acres Available	Acres With Condition	Acres Not Available	Dominant Site Conditions										
					5B	5C	2F	2G	2H	3A	3D	3J	5A	5E	
622	504	96	22		Aspen		96		0			17	2		2
5	0	0	5		Hemlock						5				
76	63	12	0		Herbaceous Openland	12									
92	92	0	0		Low-Density Trees										
130	0	0	129		Lowland Conifers				79	39			11		
27	2	0	26		Lowland Deciduous				26						
133	122	0	11		Lowland Shrub				0				8		3
12	12	0	0		Marsh										
21	12	0	9		Mixed Upland Deciduous							9			
122	90	27	5		Natural Mixed Pines		27			2		0			3
115	37	0	78		Northern Hardwood			4							74
6	0	0	6		Oak					6					
180	180	0	0		Red Pine										
5	5	0	0		Sand, Soil										
54	16	0	38		Upland Mixed Forest			9	0	18			12		
18	18	0	0		Upland Shrub										
46	45	0	1		Urban				1						
21	21	0	0		Water										
8	4	0	4		White Pine								4		
1,693	1,223	136	333		Total Forested Acres	12	124	13	106	65	5	27	36	74	8
	72%	8%	20%		Relative Percent										

**Due to limitations in the current Site Conditions Analysis tool, all nonforested acres are considered available. Future development will enable analysis of nonforested types.*

Site No.	Dominant Site Cond	Dominant Site Availability	Dominant Site Condition	Acres	Other Site Condition	Other Site Condition	Other Site Condition	Other Site Condition
1	Unavailable		2H: Blocked by physical obstacle (e.g. upland stand in a lowland area)	29	5C: Delay treatment for age/size class diversity or exceptional site quality	Unspecified	Unspecified	Unspecified
Comments: 								

Report 4 – Site Conditions

Traverse City Mgt. Unit

Paul Roell : Examiner

Compartment: 163

Year of Entry: 2024

2	Unavailable	3D: Recreational / Scenic values	27	3J: Water quality / BMPs (stream, river, or lake)	Unspecified	Unspecified	Unspecified
Comments:							
3	Unavailable	5E: Long-Term Retention	1	Unspecified	Unspecified	Unspecified	Unspecified
Comments:							
4	Unavailable	2H: Blocked by physical obstacle (e.g. upland stand in a lowland area)	16	Unspecified	Unspecified	Unspecified	Unspecified
Comments: Either need access through upland private property or bridge and road across lowland. Unknown length.							
5	Unavailable	2F: Too steep	9	Unspecified	Unspecified	Unspecified	Unspecified
Comments:							
6	Unavailable	3J: Water quality / BMPs (stream, river, or lake)	4	Unspecified	Unspecified	Unspecified	Unspecified
Comments:							
7	Unavailable	5E: Long-Term Retention	1	Unspecified	Unspecified	Unspecified	Unspecified
Comments: retention for the overstory removal of the parent stand 39							
8	Available	5C: Delay treatment for age/size class diversity or exceptional site quality	2	Unspecified	Unspecified	Unspecified	Unspecified
Comments:							

Report 4 – Site Conditions

Traverse City Mgt. Unit

Paul Roell : Examiner

Compartment: 163

Year of Entry: 2024

9	Unavailable	5E: Long-Term Retention	3	Unspecified	Unspecified	Unspecified	Unspecified
Comments:							
10	Unavailable	2G: Too wet (sensitive soils, does not include access issues)	38	Unspecified	Unspecified	Unspecified	Unspecified
Comments:							
11	Unavailable	3J: Water quality / BMPs (stream, river, or lake)	8	Unspecified	Unspecified	Unspecified	Unspecified
Comments:							
12	Unavailable	5E: Long-Term Retention	0	Unspecified	Unspecified	Unspecified	Unspecified
Comments:							
13	Unavailable	5E: Long-Term Retention	1	Unspecified	Unspecified	Unspecified	Unspecified
Comments:							
14	Unavailable	5E: Long-Term Retention	1	Unspecified	Unspecified	Unspecified	Unspecified
Comments:							
15	Unavailable	3J: Water quality / BMPs (stream, river, or lake)	8	Unspecified	Unspecified	Unspecified	Unspecified
Comments:							

Report 4 – Site Conditions

Traverse City Mgt. Unit

Paul Roell : Examiner

Compartment: 163

Year of Entry: 2024

16	Unavailable	2H: Blocked by physical obstacle (e.g. upland stand in a lowland area)	2	Unspecified	Unspecified	Unspecified	Unspecified
Comments:							
17	Unavailable	5A: Not able to obtain desirable regeneration	74	Unspecified	Unspecified	Unspecified	Unspecified
Comments:							
18	Unavailable	2G: Too wet (sensitive soils, does not include access issues)	21	Unspecified	Unspecified	Unspecified	Unspecified
Comments:							
19	Unavailable	2G: Too wet (sensitive soils, does not include access issues)	5	Unspecified	Unspecified	Unspecified	Unspecified
Comments:							
20	Unavailable	2G: Too wet (sensitive soils, does not include access issues)	13	Unspecified	Unspecified	Unspecified	Unspecified
Comments:							
21	Unavailable	2G: Too wet (sensitive soils, does not include access issues)	29	Unspecified	Unspecified	Unspecified	Unspecified
Comments:							

Report 4 – Site Conditions

Traverse City Mgt. Unit

Paul Roell : Examiner

Compartment: 163

Year of Entry: 2024

22	Unavailable	2H: Blocked by physical obstacle (e.g. upland stand in a lowland area)	11	2G: Too wet (sensitive soils, does not include access issues)	Unspecified	Unspecified	Unspecified
Comments:							
23	Unavailable	3J: Water quality / BMPs (stream, river, or lake)	3	Unspecified	Unspecified	Unspecified	Unspecified
Comments:							
24	Unavailable	3A: Conservation Values incompatible with harvest at this time	5	Unspecified	Unspecified	Unspecified	Unspecified
Comments: Unusual hemlock stand.							
25	Unavailable	2F: Too steep	4	Unspecified	Unspecified	Unspecified	Unspecified
Comments:							
26	Unavailable	3J: Water quality / BMPs (stream, river, or lake)	2	Unspecified	Unspecified	Unspecified	Unspecified
Comments:							
27	Unavailable	3J: Water quality / BMPs (stream, river, or lake)	12	Unspecified	Unspecified	Unspecified	Unspecified
Comments:							

Report 4 – Site Conditions

Traverse City Mgt. Unit

Paul Roell : Examiner

Compartment: 163

Year of Entry: 2024

28	Available	5C: Delay treatment for age/size class diversity or exceptional site quality	27	Unspecified	Unspecified	Unspecified	Unspecified
Comments:							
29	Unavailable	2H: Blocked by physical obstacle (e.g. upland stand in a lowland area)	6	Unspecified	Unspecified	Unspecified	Unspecified
Comments:							
30	Available	5C: Delay treatment for age/size class diversity or exceptional site quality	66	Unspecified	Unspecified	Unspecified	Unspecified
Comments:							
31	Unavailable	2H: Blocked by physical obstacle (e.g. upland stand in a lowland area)	2	Unspecified	Unspecified	Unspecified	Unspecified
Comments:							
32	Available	5C: Delay treatment for age/size class diversity or exceptional site quality	29	Unspecified	Unspecified	Unspecified	Unspecified
Comments:							
33	Available	5B: Maintain for regeneration purposes	12	Unspecified	Unspecified	Unspecified	Unspecified
Comments: See locked comments.							

Mgt. Unit

Compartment: #Type!

Year of Entry:



Report 5 – PROPOSED SPECIAL CONSERVATION AREA* (SCA) DETAILS

* This is a partial list of SCAs for this compartment. Not included are those areas identified under other Department initiatives (Natural Rivers, Deer Wintering Areas, etc.). Those will be identified in separate, future map and report products.

SCA Name	SCA Category	Detail Type	Recommendation	Acres
----------	--------------	-------------	----------------	-------

Comments



Report 6 – EXISTING SPECIAL CONSERVATION AREA DETAILS

* This is a list of SCA's for this compartment along with a 1/4 mile buffer surrounding the compartment. Refer to the Special Conservation Area Map for locations of the below listed Conservation Areas.

ERA = Ecological Reference Area
HCVA = High Conservation Value Area
SCA = Special Conservation Area

Conservation Area	Type	Description
SCA	Cold Water Stream	A coldwater stream has temperature and dissolved oxygen conditions that allow naturally-reproduced or stocked trout populations and those of other coldwater fish species (e.g., slimy sculpin) to persist from year to year. Coldwater streams in Michigan typically provide these conditions due to substantial contributions of groundwater to their stream flows. Such streams are established by Director's action and designated as trout resources by Fisheries Order 210.
SCA	Riparian Area	A transitional area between aquatic and terrestrial ecosystems in which the terrestrial ecosystem influences the aquatic ecosystem and vice-versa. Because of the unique conditions adjacent to lakes, streams and open water wetlands, riparian areas harbor a high diversity of plants and wildlife. Riparian communities are ecologically and socially significant in their effects on water quality and quantity, as well as aesthetics, habitat, bank stability, timber production, and their contribution to overall biodiversity.



Stand	Level 4 Cover Type	Size Density	Acres	Stand Age	BA Range	Managed Site	General Comments																																																		
1	6229 - Mixed lowland shrub	Nonstocked	7.6		Immature	No	Flooding area, wet soils. Some blow down, areas of stand were salvaged. Areas of the stand are filling in with red maple, cedar, aspen, white pine and balsam fir. A lot of stand dead trees and tag alder also present.																																																		
2	3303 - Mixed Low Density Trees	Nonstocked	17.2			No	scattered cherry and white pine																																																		
3	4130 - Aspen	Poletimber Well	50.2	31	81-110	N/A	More pine in the western portion of the stand some was cleaned up in a salvage harvest in 1999																																																		
		<table border="1"> <thead> <tr> <th>Canopy Species</th> <th>% Cover</th> <th>Size Class</th> <th>DBH</th> <th>Age</th> </tr> </thead> <tbody> <tr> <td>Bigtooth Aspen</td> <td>75</td> <td>Pole</td> <td>6</td> <td>31</td> </tr> <tr> <td>Balsam Fir</td> <td>5</td> <td>Sapling/Pole</td> <td>4</td> <td></td> </tr> <tr> <td>White Pine</td> <td>5</td> <td>Pole</td> <td>6</td> <td></td> </tr> <tr> <td>Red Oak</td> <td>5</td> <td>Sapling/Pole</td> <td>4</td> <td></td> </tr> <tr> <td>Red Maple</td> <td>10</td> <td>Sapling/Pole</td> <td>4</td> <td></td> </tr> </tbody> </table>			Canopy Species	% Cover	Size Class	DBH	Age	Bigtooth Aspen	75	Pole	6	31	Balsam Fir	5	Sapling/Pole	4		White Pine	5	Pole	6		Red Oak	5	Sapling/Pole	4		Red Maple	10	Sapling/Pole	4		<table border="1"> <thead> <tr> <th>Sub-Canopy Species</th> <th>Density</th> <th>Avg. Height</th> <th>Size</th> </tr> </thead> <tbody> <tr> <td>Balsam Fir</td> <td>Medium</td> <td>5 - 10 feet</td> <td>Sapling</td> </tr> </tbody> </table>		Sub-Canopy Species	Density	Avg. Height	Size	Balsam Fir	Medium	5 - 10 feet	Sapling													
Canopy Species	% Cover	Size Class	DBH	Age																																																					
Bigtooth Aspen	75	Pole	6	31																																																					
Balsam Fir	5	Sapling/Pole	4																																																						
White Pine	5	Pole	6																																																						
Red Oak	5	Sapling/Pole	4																																																						
Red Maple	10	Sapling/Pole	4																																																						
Sub-Canopy Species	Density	Avg. Height	Size																																																						
Balsam Fir	Medium	5 - 10 feet	Sapling																																																						
4	6129 - Mixed Coniferous Lowland Forest	Poletimber Well	38.1	89	81-110	N/A	Mixed lowland conifer stand consisting mainly of cedar, balsam fir and occasional spruce. Some red maple, white pine, paper birch and there are spring feed drainages throughout																																																		
		<table border="1"> <thead> <tr> <th>Canopy Species</th> <th>% Cover</th> <th>Size Class</th> <th>DBH</th> <th>Age</th> </tr> </thead> <tbody> <tr> <td>Tamarack</td> <td>6</td> <td>Pole</td> <td>8</td> <td></td> </tr> <tr> <td>Northern White Cedar</td> <td>40</td> <td>Pole/Log</td> <td>8</td> <td>89</td> </tr> <tr> <td>White Spruce</td> <td>15</td> <td>Pole</td> <td>8</td> <td></td> </tr> <tr> <td>Balsam Fir</td> <td>25</td> <td>Pole/Sapling</td> <td>6</td> <td></td> </tr> <tr> <td>Paper Birch</td> <td>4</td> <td>Pole</td> <td>7</td> <td></td> </tr> <tr> <td>Red Maple</td> <td>5</td> <td>Pole</td> <td>8</td> <td></td> </tr> <tr> <td>White Pine</td> <td>5</td> <td>Log/Pole/XLog</td> <td>10</td> <td></td> </tr> </tbody> </table>			Canopy Species	% Cover	Size Class	DBH	Age	Tamarack	6	Pole	8		Northern White Cedar	40	Pole/Log	8	89	White Spruce	15	Pole	8		Balsam Fir	25	Pole/Sapling	6		Paper Birch	4	Pole	7		Red Maple	5	Pole	8		White Pine	5	Log/Pole/XLog	10		<table border="1"> <thead> <tr> <th>Sub-Canopy Species</th> <th>Density</th> <th>Avg. Height</th> <th>Size</th> </tr> </thead> <tbody> <tr> <td>Balsam Fir</td> <td>High</td> <td>5 - 10 feet</td> <td>Sapling</td> </tr> </tbody> </table>		Sub-Canopy Species	Density	Avg. Height	Size	Balsam Fir	High	5 - 10 feet	Sapling			
Canopy Species	% Cover	Size Class	DBH	Age																																																					
Tamarack	6	Pole	8																																																						
Northern White Cedar	40	Pole/Log	8	89																																																					
White Spruce	15	Pole	8																																																						
Balsam Fir	25	Pole/Sapling	6																																																						
Paper Birch	4	Pole	7																																																						
Red Maple	5	Pole	8																																																						
White Pine	5	Log/Pole/XLog	10																																																						
Sub-Canopy Species	Density	Avg. Height	Size																																																						
Balsam Fir	High	5 - 10 feet	Sapling																																																						
5	4311 - Pine, Aspen Mix	Poletimber Well	8.8	58	81-110	N/A	Has a flowing spring and the shore to shore horse trail in this stand																																																		
		<table border="1"> <thead> <tr> <th>Canopy Species</th> <th>% Cover</th> <th>Size Class</th> <th>DBH</th> <th>Age</th> </tr> </thead> <tbody> <tr> <td>Red Oak</td> <td>5</td> <td>Pole</td> <td>8</td> <td></td> </tr> <tr> <td>Bigtooth Aspen</td> <td>45</td> <td>Log/Pole</td> <td>10</td> <td>58</td> </tr> <tr> <td>Balsam Fir</td> <td>20</td> <td>Pole</td> <td>6</td> <td></td> </tr> <tr> <td>White Pine</td> <td>10</td> <td>Log/Pole</td> <td>10</td> <td></td> </tr> <tr> <td>Red Pine</td> <td>5</td> <td>Log/Pole</td> <td>10</td> <td></td> </tr> <tr> <td>Jack Pine</td> <td>15</td> <td>Pole</td> <td>8</td> <td></td> </tr> </tbody> </table>			Canopy Species	% Cover	Size Class	DBH	Age	Red Oak	5	Pole	8		Bigtooth Aspen	45	Log/Pole	10	58	Balsam Fir	20	Pole	6		White Pine	10	Log/Pole	10		Red Pine	5	Log/Pole	10		Jack Pine	15	Pole	8		<table border="1"> <thead> <tr> <th>Sub-Canopy Species</th> <th>Density</th> <th>Avg. Height</th> <th>Size</th> </tr> </thead> <tbody> <tr> <td>Balsam Fir</td> <td>Medium</td> <td>10 - 20 feet</td> <td>Sapling</td> </tr> <tr> <td>Jack Pine</td> <td>Low</td> <td>5 - 10 feet</td> <td>Sapling</td> </tr> <tr> <td>White Pine</td> <td>Low</td> <td>5 - 10 feet</td> <td>Sapling</td> </tr> </tbody> </table>		Sub-Canopy Species	Density	Avg. Height	Size	Balsam Fir	Medium	10 - 20 feet	Sapling	Jack Pine	Low	5 - 10 feet	Sapling	White Pine	Low	5 - 10 feet	Sapling
Canopy Species	% Cover	Size Class	DBH	Age																																																					
Red Oak	5	Pole	8																																																						
Bigtooth Aspen	45	Log/Pole	10	58																																																					
Balsam Fir	20	Pole	6																																																						
White Pine	10	Log/Pole	10																																																						
Red Pine	5	Log/Pole	10																																																						
Jack Pine	15	Pole	8																																																						
Sub-Canopy Species	Density	Avg. Height	Size																																																						
Balsam Fir	Medium	10 - 20 feet	Sapling																																																						
Jack Pine	Low	5 - 10 feet	Sapling																																																						
White Pine	Low	5 - 10 feet	Sapling																																																						
6	622 - Lowland Shrub	Nonstocked	3.9			No	Stand is a wet area, most likely resulting from beaver activity on a small feeder creek. Dead standing cedar and spruce can be found throughout.																																																		
7	310 - Herbaceous Openland	Nonstocked	2.6			No	Old gas well/landing site.																																																		



Stand	Level 4 Cover Type	Size Density	Acres	Stand Age	BA Range	Managed Site	General Comments																																																			
8	4133 - Aspen, Mixed Pine	Poletimber Well	6.0	65	1-50	N/A	Red maple, aspen and jack pine dominant with some balsam fir and scattered white and red pine.																																																			
<table border="1"> <thead> <tr> <th>Canopy Species</th> <th>% Cover</th> <th>Size Class</th> <th>DBH</th> <th>Age</th> </tr> </thead> <tbody> <tr> <td>Red Oak</td> <td>5</td> <td>Log/Pole</td> <td>10</td> <td></td> </tr> <tr> <td>Red Pine</td> <td>5</td> <td>Log/Pole</td> <td>10</td> <td></td> </tr> <tr> <td>Balsam Fir</td> <td>5</td> <td>Pole</td> <td>6</td> <td></td> </tr> <tr> <td>Red Maple</td> <td>20</td> <td>Pole/Log</td> <td>8</td> <td></td> </tr> <tr> <td>Jack Pine</td> <td>15</td> <td>Pole/Log</td> <td>8</td> <td></td> </tr> <tr> <td>White Pine</td> <td>5</td> <td>Pole/Log</td> <td>8</td> <td></td> </tr> <tr> <td>Bigtooth Aspen</td> <td>45</td> <td>Log/Pole</td> <td>10</td> <td>65</td> </tr> </tbody> </table>		Canopy Species	% Cover	Size Class	DBH	Age	Red Oak	5	Log/Pole	10		Red Pine	5	Log/Pole	10		Balsam Fir	5	Pole	6		Red Maple	20	Pole/Log	8		Jack Pine	15	Pole/Log	8		White Pine	5	Pole/Log	8		Bigtooth Aspen	45	Log/Pole	10	65	<table border="1"> <thead> <tr> <th>Sub-Canopy Species</th> <th>Density</th> <th>Avg. Height</th> <th>Size</th> </tr> </thead> <tbody> <tr> <td>Balsam Fir</td> <td>Medium</td> <td>10 - 20 feet</td> <td>Sapling</td> </tr> </tbody> </table>		Sub-Canopy Species	Density	Avg. Height	Size	Balsam Fir	Medium	10 - 20 feet	Sapling							
Canopy Species	% Cover	Size Class	DBH	Age																																																						
Red Oak	5	Log/Pole	10																																																							
Red Pine	5	Log/Pole	10																																																							
Balsam Fir	5	Pole	6																																																							
Red Maple	20	Pole/Log	8																																																							
Jack Pine	15	Pole/Log	8																																																							
White Pine	5	Pole/Log	8																																																							
Bigtooth Aspen	45	Log/Pole	10	65																																																						
Sub-Canopy Species	Density	Avg. Height	Size																																																							
Balsam Fir	Medium	10 - 20 feet	Sapling																																																							
9	3104 - Degraded	Nonstocked	2.1			No	abandoned well site, vegetated w/ grasses/knapweed. Plugged 2005. Updated stand data to not "managed oil/gas". Merit Energy is no longer responsible for an any additional surface restoration.																																																			
10	4112 - Maple, Beech, Cherry Association	Poletimber Well	74.3	82	111-140	N/A	Too low/variable ba to warrant thinning at this time. Some pockets more dense and of higher quality, however overall stand basal area is 115. Low number of crop trees and there is dense undesirable regeneration present.																																																			
<table border="1"> <thead> <tr> <th>Canopy Species</th> <th>% Cover</th> <th>Size Class</th> <th>DBH</th> <th>Age</th> </tr> </thead> <tbody> <tr> <td>Ironwood</td> <td>5</td> <td>Pole/Sapling</td> <td>6</td> <td></td> </tr> <tr> <td>Sugar Maple</td> <td>30</td> <td>Pole/Log</td> <td>8</td> <td></td> </tr> <tr> <td>Red Maple</td> <td>35</td> <td>Pole/Log</td> <td>8</td> <td>82</td> </tr> <tr> <td>White Pine</td> <td>5</td> <td>Log/Pole</td> <td>12</td> <td></td> </tr> <tr> <td>Red Oak</td> <td>10</td> <td>Log/Pole</td> <td>10</td> <td></td> </tr> <tr> <td>Beech</td> <td>15</td> <td>Log/Pole</td> <td>10</td> <td></td> </tr> </tbody> </table>		Canopy Species	% Cover	Size Class	DBH	Age	Ironwood	5	Pole/Sapling	6		Sugar Maple	30	Pole/Log	8		Red Maple	35	Pole/Log	8	82	White Pine	5	Log/Pole	12		Red Oak	10	Log/Pole	10		Beech	15	Log/Pole	10		<table border="1"> <thead> <tr> <th>Sub-Canopy Species</th> <th>Density</th> <th>Avg. Height</th> <th>Size</th> </tr> </thead> <tbody> <tr> <td>White Pine</td> <td>Low</td> <td>5 - 10 feet</td> <td>Sapling</td> </tr> <tr> <td>Beech</td> <td>High</td> <td>5 - 10 feet</td> <td>Sapling</td> </tr> <tr> <td>Ironwood</td> <td>High</td> <td>5 - 10 feet</td> <td>Sapling</td> </tr> </tbody> </table>		Sub-Canopy Species	Density	Avg. Height	Size	White Pine	Low	5 - 10 feet	Sapling	Beech	High	5 - 10 feet	Sapling	Ironwood	High	5 - 10 feet	Sapling				
Canopy Species	% Cover	Size Class	DBH	Age																																																						
Ironwood	5	Pole/Sapling	6																																																							
Sugar Maple	30	Pole/Log	8																																																							
Red Maple	35	Pole/Log	8	82																																																						
White Pine	5	Log/Pole	12																																																							
Red Oak	10	Log/Pole	10																																																							
Beech	15	Log/Pole	10																																																							
Sub-Canopy Species	Density	Avg. Height	Size																																																							
White Pine	Low	5 - 10 feet	Sapling																																																							
Beech	High	5 - 10 feet	Sapling																																																							
Ironwood	High	5 - 10 feet	Sapling																																																							
11	6239 - Mixed Emergent Wetland	Nonstocked	12.1			No	Stand looks to be an old flooding where several small tributaries flow into the Rapid River. Dead staning cedar, white pine and spruce can be found along edges of the stand.																																																			
12	4311 - Pine, Aspen Mix	Sawtimber Well	25.1	86	111-140	N/A	Mixed stand w/ variable composition. Some wet areas throughout stand resulting from seeps leading to adjacent stand to the east.																																																			
<table border="1"> <thead> <tr> <th>Canopy Species</th> <th>% Cover</th> <th>Size Class</th> <th>DBH</th> <th>Age</th> </tr> </thead> <tbody> <tr> <td>Balsam Fir</td> <td>10</td> <td>Pole/Sapling</td> <td>6</td> <td>50</td> </tr> <tr> <td>White Pine</td> <td>15</td> <td>Log/Pole</td> <td>13</td> <td></td> </tr> <tr> <td>Red Pine</td> <td>25</td> <td>Log/Pole</td> <td>12</td> <td>86</td> </tr> <tr> <td>Bigtooth Aspen</td> <td>25</td> <td>Pole/Log</td> <td>8</td> <td></td> </tr> <tr> <td>Jack Pine</td> <td>5</td> <td>Pole</td> <td>8</td> <td></td> </tr> <tr> <td>Red Oak</td> <td>5</td> <td>Log/Pole</td> <td>10</td> <td></td> </tr> <tr> <td>Red Maple</td> <td>15</td> <td>Pole</td> <td>8</td> <td></td> </tr> </tbody> </table>		Canopy Species	% Cover	Size Class	DBH	Age	Balsam Fir	10	Pole/Sapling	6	50	White Pine	15	Log/Pole	13		Red Pine	25	Log/Pole	12	86	Bigtooth Aspen	25	Pole/Log	8		Jack Pine	5	Pole	8		Red Oak	5	Log/Pole	10		Red Maple	15	Pole	8		<table border="1"> <thead> <tr> <th>Sub-Canopy Species</th> <th>Density</th> <th>Avg. Height</th> <th>Size</th> </tr> </thead> <tbody> <tr> <td>Balsam Fir</td> <td>High</td> <td>10 - 20 feet</td> <td>Sapling</td> </tr> <tr> <td>White Pine</td> <td>High</td> <td>5 - 10 feet</td> <td>Sapling</td> </tr> </tbody> </table>		Sub-Canopy Species	Density	Avg. Height	Size	Balsam Fir	High	10 - 20 feet	Sapling	White Pine	High	5 - 10 feet	Sapling			
Canopy Species	% Cover	Size Class	DBH	Age																																																						
Balsam Fir	10	Pole/Sapling	6	50																																																						
White Pine	15	Log/Pole	13																																																							
Red Pine	25	Log/Pole	12	86																																																						
Bigtooth Aspen	25	Pole/Log	8																																																							
Jack Pine	5	Pole	8																																																							
Red Oak	5	Log/Pole	10																																																							
Red Maple	15	Pole	8																																																							
Sub-Canopy Species	Density	Avg. Height	Size																																																							
Balsam Fir	High	10 - 20 feet	Sapling																																																							
White Pine	High	5 - 10 feet	Sapling																																																							



Stand	Level 4 Cover Type	Size Density	Acres	Stand Age	BA Range	Managed Site	General Comments
-------	--------------------	--------------	-------	-----------	----------	--------------	------------------

13 4133 - Aspen, Mixed Pine Sapling Well 18.2 17 Immature N/A A3 stand. Red pine, white pine and oak were left following harvest so there is an R-W-O 7 overstory. Stand was final harvested in 2005

Canopy Species	% Cover	Size Class	DBH	Age
Red Oak	5	Pole/Log	8	
White Pine	5	Log/Pole	10	
Jack Pine	15	Sapling	2	
Red Pine	5	Log	12	
Bigtooth Aspen	50	Sapling/Pole	3	17
Red Maple	20	Sapling/Pole	3	

14 3303 - Mixed Low Density Trees Nonstocked 21.3 No filling in with white pine, jack pine and cherry. Deep depression within stand

15 3303 - Mixed Low Density Trees Nonstocked 14.3 Immature No Low density cherry, white pine, jack pine and oak along with occasional aspen.

16 4139 - Aspen, Mixed Deciduous Poletimber Medium 15.7 55 1-50 N/A

Canopy Species	% Cover	Size Class	DBH	Age	Sub-Canopy Species	Density	Avg. Height	Size
Red Maple	25	Pole/Log	8		Witch Hazel	Low	5 - 10 feet	Tall Shrub
Quaking Aspen	40	Pole	8	55	White Pine	Low	5 - 10 feet	Sapling
Red Oak	5	Log/Pole	10		Red Maple	Low	5 - 10 feet	Sapling
Bigtooth Aspen	10	Log/Pole	12		Balsam Fir	Low	5 - 10 feet	Sapling
White Pine	10	Log/Pole	10					
Sugar Maple	10	Pole	8					

17 4130 - Aspen Poletimber Well 1.6 71 81-110 N/A leave this stand as long term retention

Canopy Species	% Cover	Size Class	DBH	Age	Sub-Canopy Species	Density	Avg. Height	Size
Jack Pine	10	Pole	8		Black Cherry	Low	5 - 10 feet	Sapling
Bigtooth Aspen	75	Pole	8	71	Red Maple	Low	10 - 20 feet	Sapling
Red Maple	15	Pole	8					

18 42290 - Natural Mixed Pine Sawtimber Poor 12.9 65 51-80 N/A Final harvest, spring 2016 to much pine left need to release the regen

Canopy Species	% Cover	Size Class	DBH	Age	Sub-Canopy Species	Density	Avg. Height	Size
Paper Birch	5	Pole	8		Bigtooth Aspen	High	5 - 10 feet	Sapling
White Pine	20	Pole/Log	8					
Balsam Fir	10	Pole	6					
Red Oak	5	Log/Pole	10					
Bigtooth Aspen	5	Pole	8					
Red Pine	55	Log/Pole	10	65				

19 350 - Parks and Golf Courses Nonstocked 11.5 Immature No stand includes rapid river trail camp.



Stand	Level 4 Cover Type	Size Density	Acres	Stand Age	BA Range	Managed Site	General Comments																																																		
20	42290 - Natural Mixed Pine	Poletimber Well	15.8	70	81-110	N/A	Mixed stand, pockets of aspen and hardwood. Some areas of smaller diameter regen and overstory. Pine dominant overall.																																																		
<table border="1"> <thead> <tr> <th>Canopy Species</th> <th>% Cover</th> <th>Size Class</th> <th>DBH</th> <th>Age</th> </tr> </thead> <tbody> <tr> <td>Sugar Maple</td> <td>2</td> <td>Log/Pole</td> <td>10</td> <td></td> </tr> <tr> <td>Red Maple</td> <td>10</td> <td>Pole</td> <td>8</td> <td></td> </tr> <tr> <td>Red Oak</td> <td>2</td> <td>Pole/Log</td> <td>9</td> <td></td> </tr> <tr> <td>Quaking Aspen</td> <td>10</td> <td>Pole/Sapling</td> <td>7</td> <td></td> </tr> <tr> <td>White Pine</td> <td>36</td> <td>Log/Pole</td> <td>10</td> <td></td> </tr> <tr> <td>Red Pine</td> <td>40</td> <td>Pole/Log</td> <td>10</td> <td>70</td> </tr> </tbody> </table>		Canopy Species	% Cover	Size Class	DBH	Age	Sugar Maple	2	Log/Pole	10		Red Maple	10	Pole	8		Red Oak	2	Pole/Log	9		Quaking Aspen	10	Pole/Sapling	7		White Pine	36	Log/Pole	10		Red Pine	40	Pole/Log	10	70	<table border="1"> <thead> <tr> <th>Sub-Canopy Species</th> <th>Density</th> <th>Avg. Height</th> <th>Size</th> </tr> </thead> <tbody> <tr> <td>Balsam Fir</td> <td>Low</td> <td>10 - 20 feet</td> <td>Sapling</td> </tr> <tr> <td>White Pine</td> <td>High</td> <td>10 - 20 feet</td> <td>Sapling</td> </tr> </tbody> </table>		Sub-Canopy Species	Density	Avg. Height	Size	Balsam Fir	Low	10 - 20 feet	Sapling	White Pine	High	10 - 20 feet	Sapling							
Canopy Species	% Cover	Size Class	DBH	Age																																																					
Sugar Maple	2	Log/Pole	10																																																						
Red Maple	10	Pole	8																																																						
Red Oak	2	Pole/Log	9																																																						
Quaking Aspen	10	Pole/Sapling	7																																																						
White Pine	36	Log/Pole	10																																																						
Red Pine	40	Pole/Log	10	70																																																					
Sub-Canopy Species	Density	Avg. Height	Size																																																						
Balsam Fir	Low	10 - 20 feet	Sapling																																																						
White Pine	High	10 - 20 feet	Sapling																																																						
21	4119 - Mixed Northern Hardwoods	Poletimber Well	28.5	66	51-80	N/A	Stand was select cut in Feb-April of 2017 (Log Local 61-129-15-01). Removed the aspen and most of the beech and marked through the areas of maple, pine and oak. There is a red shoulder hawks nest in the southeast corner of the sale that was buffered.																																																		
<table border="1"> <thead> <tr> <th>Canopy Species</th> <th>% Cover</th> <th>Size Class</th> <th>DBH</th> <th>Age</th> </tr> </thead> <tbody> <tr> <td>Sugar Maple</td> <td>15</td> <td>Pole</td> <td>8</td> <td></td> </tr> <tr> <td>Red Maple</td> <td>50</td> <td>Pole/Log</td> <td>8</td> <td>66</td> </tr> <tr> <td>Red Oak</td> <td>20</td> <td>Log/Pole</td> <td>12</td> <td></td> </tr> <tr> <td>White Pine</td> <td>10</td> <td>Log/Pole</td> <td>12</td> <td></td> </tr> <tr> <td>Red Pine</td> <td>5</td> <td>Log/Pole</td> <td>12</td> <td></td> </tr> </tbody> </table>		Canopy Species	% Cover	Size Class	DBH	Age	Sugar Maple	15	Pole	8		Red Maple	50	Pole/Log	8	66	Red Oak	20	Log/Pole	12		White Pine	10	Log/Pole	12		Red Pine	5	Log/Pole	12		<table border="1"> <thead> <tr> <th>Sub-Canopy Species</th> <th>Density</th> <th>Avg. Height</th> <th>Size</th> </tr> </thead> <tbody> <tr> <td>Black Cherry</td> <td>Medium</td> <td>5 - 10 feet</td> <td>Sapling</td> </tr> <tr> <td>Hemlock</td> <td>Low</td> <td>>20 feet</td> <td>Pole</td> </tr> <tr> <td>Beech</td> <td>Full</td> <td>5 - 10 feet</td> <td>Sapling</td> </tr> <tr> <td>Balsam Fir</td> <td>Low</td> <td>10 - 20 feet</td> <td>Sapling</td> </tr> <tr> <td>White Pine</td> <td>Medium</td> <td>10 - 20 feet</td> <td>Sapling</td> </tr> </tbody> </table>		Sub-Canopy Species	Density	Avg. Height	Size	Black Cherry	Medium	5 - 10 feet	Sapling	Hemlock	Low	>20 feet	Pole	Beech	Full	5 - 10 feet	Sapling	Balsam Fir	Low	10 - 20 feet	Sapling	White Pine	Medium	10 - 20 feet	Sapling
Canopy Species	% Cover	Size Class	DBH	Age																																																					
Sugar Maple	15	Pole	8																																																						
Red Maple	50	Pole/Log	8	66																																																					
Red Oak	20	Log/Pole	12																																																						
White Pine	10	Log/Pole	12																																																						
Red Pine	5	Log/Pole	12																																																						
Sub-Canopy Species	Density	Avg. Height	Size																																																						
Black Cherry	Medium	5 - 10 feet	Sapling																																																						
Hemlock	Low	>20 feet	Pole																																																						
Beech	Full	5 - 10 feet	Sapling																																																						
Balsam Fir	Low	10 - 20 feet	Sapling																																																						
White Pine	Medium	10 - 20 feet	Sapling																																																						
22	4130 - Aspen	Poletimber Medium	1.3	54	1-50	N/A	Left as retention on opposite side of recreational trail.																																																		
<table border="1"> <thead> <tr> <th>Canopy Species</th> <th>% Cover</th> <th>Size Class</th> <th>DBH</th> <th>Age</th> </tr> </thead> <tbody> <tr> <td>Jack Pine</td> <td>6</td> <td>Pole</td> <td>7</td> <td></td> </tr> <tr> <td>Bigtooth Aspen</td> <td>89</td> <td>Pole</td> <td>8</td> <td>54</td> </tr> <tr> <td>Red Maple</td> <td>5</td> <td>Pole</td> <td>6</td> <td></td> </tr> </tbody> </table>		Canopy Species	% Cover	Size Class	DBH	Age	Jack Pine	6	Pole	7		Bigtooth Aspen	89	Pole	8	54	Red Maple	5	Pole	6		<table border="1"> <thead> <tr> <th>Sub-Canopy Species</th> <th>Density</th> <th>Avg. Height</th> <th>Size</th> </tr> </thead> <tbody> <tr> <td>Red Maple</td> <td>Low</td> <td>5 - 10 feet</td> <td>Sapling</td> </tr> <tr> <td>Black Cherry</td> <td>Low</td> <td>5 - 10 feet</td> <td>Sapling</td> </tr> <tr> <td>Jack Pine</td> <td>Low</td> <td>5 - 10 feet</td> <td>Sapling</td> </tr> </tbody> </table>		Sub-Canopy Species	Density	Avg. Height	Size	Red Maple	Low	5 - 10 feet	Sapling	Black Cherry	Low	5 - 10 feet	Sapling	Jack Pine	Low	5 - 10 feet	Sapling																		
Canopy Species	% Cover	Size Class	DBH	Age																																																					
Jack Pine	6	Pole	7																																																						
Bigtooth Aspen	89	Pole	8	54																																																					
Red Maple	5	Pole	6																																																						
Sub-Canopy Species	Density	Avg. Height	Size																																																						
Red Maple	Low	5 - 10 feet	Sapling																																																						
Black Cherry	Low	5 - 10 feet	Sapling																																																						
Jack Pine	Low	5 - 10 feet	Sapling																																																						
23	4131 - Aspen, Oak	Poletimber Well	1.4	33	Immature	N/A	looks like a portion of the area clearcut to develop gravel pit and this portion was not utilized and regenerated to current stand.																																																		
<table border="1"> <thead> <tr> <th>Canopy Species</th> <th>% Cover</th> <th>Size Class</th> <th>DBH</th> <th>Age</th> </tr> </thead> <tbody> <tr> <td>Bigtooth Aspen</td> <td>55</td> <td>Pole/Sapling</td> <td>6</td> <td>33</td> </tr> <tr> <td>Red Maple</td> <td>25</td> <td>Pole/Sapling</td> <td>6</td> <td></td> </tr> <tr> <td>Red Oak</td> <td>20</td> <td>Sapling/Pole</td> <td>4</td> <td></td> </tr> </tbody> </table>		Canopy Species	% Cover	Size Class	DBH	Age	Bigtooth Aspen	55	Pole/Sapling	6	33	Red Maple	25	Pole/Sapling	6		Red Oak	20	Sapling/Pole	4																																					
Canopy Species	% Cover	Size Class	DBH	Age																																																					
Bigtooth Aspen	55	Pole/Sapling	6	33																																																					
Red Maple	25	Pole/Sapling	6																																																						
Red Oak	20	Sapling/Pole	4																																																						
25	710 - Sand, Soil	Nonstocked	5.4			No	gravel pit																																																		
26	3104 - Degraded	Nonstocked	1.5				State Kalkaska 1-11. Plugged 2005.																																																		
27	42290 - Natural Mixed Pine	Poletimber Well	11.7	34	51-80	N/A	mixdd pine stand, growing well. thinned in mid 90s, residual responding well. regen is thick in places																																																		
<table border="1"> <thead> <tr> <th>Canopy Species</th> <th>% Cover</th> <th>Size Class</th> <th>DBH</th> <th>Age</th> </tr> </thead> <tbody> <tr> <td>White Pine</td> <td>20</td> <td>Log/Pole</td> <td>10</td> <td></td> </tr> <tr> <td>Red Maple</td> <td>10</td> <td>Pole/Log</td> <td>8</td> <td></td> </tr> <tr> <td>Jack Pine</td> <td>40</td> <td>Pole</td> <td>6</td> <td>34</td> </tr> <tr> <td>Red Pine</td> <td>15</td> <td>Log/Pole</td> <td>12</td> <td>76</td> </tr> <tr> <td>Red Oak</td> <td>15</td> <td>Log/Pole</td> <td>12</td> <td></td> </tr> </tbody> </table>		Canopy Species	% Cover	Size Class	DBH	Age	White Pine	20	Log/Pole	10		Red Maple	10	Pole/Log	8		Jack Pine	40	Pole	6	34	Red Pine	15	Log/Pole	12	76	Red Oak	15	Log/Pole	12																											
Canopy Species	% Cover	Size Class	DBH	Age																																																					
White Pine	20	Log/Pole	10																																																						
Red Maple	10	Pole/Log	8																																																						
Jack Pine	40	Pole	6	34																																																					
Red Pine	15	Log/Pole	12	76																																																					
Red Oak	15	Log/Pole	12																																																						



Stand	Level 4 Cover Type	Size Density	Acres	Stand Age	BA Range	Managed Site	General Comments
-------	--------------------	--------------	-------	-----------	----------	--------------	------------------

28 42260 - Natural Pine, Mixed Deciduous Poletimber Well 5.0 73 111-140 N/A

Canopy Species	% Cover	Size Class	DBH	Age	Sub-Canopy Species	Density	Avg. Height	Size
Red Oak	5	Log/Pole	10		White Pine	Medium	Variable	Sapling
White Pine	55	Pole/Log	8	73				
Jack Pine	10	Pole	8					
Quaking Aspen	20	Pole	8					
Red Maple	10	Pole/Log	8					

29 4191 - Mixed Upland Deciduous with Conifer Poletimber Well 1.8 54 51-80 N/A

Canopy Species	% Cover	Size Class	DBH	Age	Sub-Canopy Species	Density	Avg. Height	Size
Bigtooth Aspen	35	Pole	8	54	White Pine	Medium	10 - 20 feet	Sapling
Red Maple	20	Log/Pole	10		Balsam Fir	Medium	10 - 20 feet	Sapling
Jack Pine	5	Pole	6	54				
White Pine	30	Pole/Log	8	54				
Paper Birch	5	Pole	6					
Balsam Fir	5	Pole	6					

30 4130 - Aspen Poletimber Well 12.9 55 81-110 N/A

Canopy Species	% Cover	Size Class	DBH	Age	Sub-Canopy Species	Density	Avg. Height	Size
Bigtooth Aspen	85	Pole/Log	8	55	Red Maple	Medium	10 - 20 feet	Sapling
Quaking Aspen	5	Pole	8					
Balsam Fir	10	Pole	6					

31 4119 - Mixed Northern Hardwoods Poletimber Well 12.6 76 81-110 N/A

Canopy Species	% Cover	Size Class	DBH	Age	Sub-Canopy Species	Density	Avg. Height	Size
Bigtooth Aspen	10	Pole/Log	8		Balsam Fir	Low	10 - 20 feet	Sapling
White Pine	5	Log	12		White Pine	Medium	10 - 20 feet	Sapling
Red Pine	5	Pole/Log	8	78	Beech	High	5 - 10 feet	Sapling
Sugar Maple	2	Pole/Log	8		Hemlock	Low	>20 feet	Pole
Paper Birch	3	Pole/Log	8					
Red Oak	5	Log/Pole	13					
Beech	25	Log/Pole	10					
Red Maple	45	Pole/Log	8	76				

very few crop trees. There is more pine on the steep slope which is the south part of the stand towards Old M-72.

32 122 - Road/Parking Lot Nonstocked 1.6 Immature No Site of old MSP radio tower. Currently used as storage area for DNR supplies.



Stand	Level 4 Cover Type	Size Density	Acres	Stand Age	BA Range	Managed Site	General Comments																																														
33	42290 - Natural Mixed Pine	Sawtimber Well	21.3	76	141-170	N/A	mixdd pine stand, growing well. thinned in mid 90s, residual responding well. regen is thick in places																																														
<table border="1"> <thead> <tr> <th>Canopy Species</th> <th>% Cover</th> <th>Size Class</th> <th>DBH</th> <th>Age</th> </tr> </thead> <tbody> <tr> <td>White Pine</td> <td>20</td> <td>Log/Pole</td> <td>10</td> <td></td> </tr> <tr> <td>Red Pine</td> <td>55</td> <td>Log/Pole</td> <td>12</td> <td>76</td> </tr> <tr> <td>Red Oak</td> <td>15</td> <td>Log/Pole</td> <td>12</td> <td></td> </tr> <tr> <td>Red Maple</td> <td>10</td> <td>Pole/Log</td> <td>8</td> <td></td> </tr> </tbody> </table>		Canopy Species	% Cover	Size Class	DBH	Age	White Pine	20	Log/Pole	10		Red Pine	55	Log/Pole	12	76	Red Oak	15	Log/Pole	12		Red Maple	10	Pole/Log	8		<table border="1"> <thead> <tr> <th>Sub-Canopy Species</th> <th>Density</th> <th>Avg. Height</th> <th>Size</th> </tr> </thead> <tbody> <tr> <td>Oak (spp.)</td> <td>Medium</td> <td>< 5 feet</td> <td>Sapling</td> </tr> <tr> <td>Red Pine</td> <td>Low</td> <td>10 - 20 feet</td> <td>Sapling</td> </tr> <tr> <td>Jack Pine</td> <td>Medium</td> <td>5 - 10 feet</td> <td>Sapling</td> </tr> <tr> <td>White Pine</td> <td>Medium</td> <td>5 - 10 feet</td> <td>Sapling</td> </tr> </tbody> </table>		Sub-Canopy Species	Density	Avg. Height	Size	Oak (spp.)	Medium	< 5 feet	Sapling	Red Pine	Low	10 - 20 feet	Sapling	Jack Pine	Medium	5 - 10 feet	Sapling	White Pine	Medium	5 - 10 feet	Sapling					
Canopy Species	% Cover	Size Class	DBH	Age																																																	
White Pine	20	Log/Pole	10																																																		
Red Pine	55	Log/Pole	12	76																																																	
Red Oak	15	Log/Pole	12																																																		
Red Maple	10	Pole/Log	8																																																		
Sub-Canopy Species	Density	Avg. Height	Size																																																		
Oak (spp.)	Medium	< 5 feet	Sapling																																																		
Red Pine	Low	10 - 20 feet	Sapling																																																		
Jack Pine	Medium	5 - 10 feet	Sapling																																																		
White Pine	Medium	5 - 10 feet	Sapling																																																		
34	110 - Low Intensity Urban	Nonstocked	4.4			No	Site of Kalkaska DNR field office/Kalkaska MSP office and associated parking areas.																																														
36	42210 - Natural Red Pine	Sawtimber Well	10.6	74	141-170	N/A	Stand was treated in 2005. All red and white pine DBH were left as residual.																																														
<table border="1"> <thead> <tr> <th>Canopy Species</th> <th>% Cover</th> <th>Size Class</th> <th>DBH</th> <th>Age</th> </tr> </thead> <tbody> <tr> <td>Red Pine</td> <td>75</td> <td>Log/Pole</td> <td>12</td> <td>74</td> </tr> <tr> <td>White Pine</td> <td>25</td> <td>Log/Pole</td> <td>12</td> <td></td> </tr> </tbody> </table>		Canopy Species	% Cover	Size Class	DBH	Age	Red Pine	75	Log/Pole	12	74	White Pine	25	Log/Pole	12		<table border="1"> <thead> <tr> <th>Sub-Canopy Species</th> <th>Density</th> <th>Avg. Height</th> <th>Size</th> </tr> </thead> <tbody> <tr> <td>Beech</td> <td>Low</td> <td>5 - 10 feet</td> <td>Sapling</td> </tr> <tr> <td>Bigtooth Aspen</td> <td>Medium</td> <td>5 - 10 feet</td> <td>Sapling</td> </tr> <tr> <td>White Pine</td> <td>Medium</td> <td>5 - 10 feet</td> <td>Sapling</td> </tr> </tbody> </table>		Sub-Canopy Species	Density	Avg. Height	Size	Beech	Low	5 - 10 feet	Sapling	Bigtooth Aspen	Medium	5 - 10 feet	Sapling	White Pine	Medium	5 - 10 feet	Sapling																			
Canopy Species	% Cover	Size Class	DBH	Age																																																	
Red Pine	75	Log/Pole	12	74																																																	
White Pine	25	Log/Pole	12																																																		
Sub-Canopy Species	Density	Avg. Height	Size																																																		
Beech	Low	5 - 10 feet	Sapling																																																		
Bigtooth Aspen	Medium	5 - 10 feet	Sapling																																																		
White Pine	Medium	5 - 10 feet	Sapling																																																		
37	622 - Lowland Shrub	Nonstocked	4.2			No	lowland wetland, seep. cattails throughout along with two distinct areas of phragmites																																														
39	42250 - Pine, Oak	Sawtimber Poor	27.4	74	1-50	N/A	Stand was harvested in 2005, all white pine, hemlock and oak were left.																																														
<table border="1"> <thead> <tr> <th>Canopy Species</th> <th>% Cover</th> <th>Size Class</th> <th>DBH</th> <th>Age</th> </tr> </thead> <tbody> <tr> <td>Red Oak</td> <td>30</td> <td>Log/Pole</td> <td>10</td> <td>74</td> </tr> <tr> <td>White Pine</td> <td>30</td> <td>Log/Pole</td> <td>10</td> <td></td> </tr> <tr> <td>Hemlock</td> <td>5</td> <td>Pole/Log</td> <td>8</td> <td></td> </tr> <tr> <td>Red Pine</td> <td>30</td> <td>Pole/Log</td> <td>8</td> <td>74</td> </tr> <tr> <td>Red Maple</td> <td>5</td> <td>Pole</td> <td>6</td> <td></td> </tr> </tbody> </table>		Canopy Species	% Cover	Size Class	DBH	Age	Red Oak	30	Log/Pole	10	74	White Pine	30	Log/Pole	10		Hemlock	5	Pole/Log	8		Red Pine	30	Pole/Log	8	74	Red Maple	5	Pole	6		<table border="1"> <thead> <tr> <th>Sub-Canopy Species</th> <th>Density</th> <th>Avg. Height</th> <th>Size</th> </tr> </thead> <tbody> <tr> <td>Red Maple</td> <td>High</td> <td>5 - 10 feet</td> <td>Sapling</td> </tr> <tr> <td>Red Pine</td> <td>Low</td> <td>5 - 10 feet</td> <td>Sapling</td> </tr> <tr> <td>White Pine</td> <td>Medium</td> <td>5 - 10 feet</td> <td>Sapling</td> </tr> <tr> <td>Bigtooth Aspen</td> <td>High</td> <td>5 - 10 feet</td> <td>Sapling</td> </tr> </tbody> </table>		Sub-Canopy Species	Density	Avg. Height	Size	Red Maple	High	5 - 10 feet	Sapling	Red Pine	Low	5 - 10 feet	Sapling	White Pine	Medium	5 - 10 feet	Sapling	Bigtooth Aspen	High	5 - 10 feet	Sapling
Canopy Species	% Cover	Size Class	DBH	Age																																																	
Red Oak	30	Log/Pole	10	74																																																	
White Pine	30	Log/Pole	10																																																		
Hemlock	5	Pole/Log	8																																																		
Red Pine	30	Pole/Log	8	74																																																	
Red Maple	5	Pole	6																																																		
Sub-Canopy Species	Density	Avg. Height	Size																																																		
Red Maple	High	5 - 10 feet	Sapling																																																		
Red Pine	Low	5 - 10 feet	Sapling																																																		
White Pine	Medium	5 - 10 feet	Sapling																																																		
Bigtooth Aspen	High	5 - 10 feet	Sapling																																																		
41	122 - Road/Parking Lot	Nonstocked	3.5			No	131 corridor, wide r.o.w.																																														
42	4310 - Pine, Oak Mix	Sawtimber Well	4.6	80	171-200	N/A	mixed pine stand with oak and aspen throughout. stand contains heavy pine regen.																																														
<table border="1"> <thead> <tr> <th>Canopy Species</th> <th>% Cover</th> <th>Size Class</th> <th>DBH</th> <th>Age</th> </tr> </thead> <tbody> <tr> <td>Jack Pine</td> <td>5</td> <td>Pole/Log</td> <td>8</td> <td></td> </tr> <tr> <td>White Pine</td> <td>30</td> <td>Log/Pole</td> <td>12</td> <td>80</td> </tr> <tr> <td>Bigtooth Aspen</td> <td>25</td> <td>Pole/Log</td> <td>8</td> <td></td> </tr> <tr> <td>Red Oak</td> <td>20</td> <td>Log/Pole</td> <td>12</td> <td></td> </tr> <tr> <td>Red Pine</td> <td>20</td> <td>Log/Pole</td> <td>12</td> <td></td> </tr> </tbody> </table>		Canopy Species	% Cover	Size Class	DBH	Age	Jack Pine	5	Pole/Log	8		White Pine	30	Log/Pole	12	80	Bigtooth Aspen	25	Pole/Log	8		Red Oak	20	Log/Pole	12		Red Pine	20	Log/Pole	12		<table border="1"> <thead> <tr> <th>Sub-Canopy Species</th> <th>Density</th> <th>Avg. Height</th> <th>Size</th> </tr> </thead> <tbody> <tr> <td>White Pine</td> <td>High</td> <td>Variable</td> <td>Sapling</td> </tr> </tbody> </table>		Sub-Canopy Species	Density	Avg. Height	Size	White Pine	High	Variable	Sapling												
Canopy Species	% Cover	Size Class	DBH	Age																																																	
Jack Pine	5	Pole/Log	8																																																		
White Pine	30	Log/Pole	12	80																																																	
Bigtooth Aspen	25	Pole/Log	8																																																		
Red Oak	20	Log/Pole	12																																																		
Red Pine	20	Log/Pole	12																																																		
Sub-Canopy Species	Density	Avg. Height	Size																																																		
White Pine	High	Variable	Sapling																																																		



Stand	Level 4 Cover Type	Size Density	Acres	Stand Age	BA Range	Managed Site	General Comments																																							
43	4124 - Red with White Oak	Sawtimber Well	6.2	99	111-140	N/A																																								
<table border="1"> <thead> <tr> <th>Canopy Species</th> <th>% Cover</th> <th>Size Class</th> <th>DBH</th> <th>Age</th> </tr> </thead> <tbody> <tr> <td>White Oak</td> <td>30</td> <td>Pole/Log</td> <td>8</td> <td></td> </tr> <tr> <td>Red Pine</td> <td>20</td> <td>Log/Pole</td> <td>13</td> <td></td> </tr> <tr> <td>Red Oak</td> <td>50</td> <td>Log/Pole</td> <td>12</td> <td>99</td> </tr> </tbody> </table>		Canopy Species	% Cover	Size Class	DBH	Age	White Oak	30	Pole/Log	8		Red Pine	20	Log/Pole	13		Red Oak	50	Log/Pole	12	99	<table border="1"> <thead> <tr> <th>Sub-Canopy Species</th> <th>Density</th> <th>Avg. Height</th> <th>Size</th> </tr> </thead> <tbody> <tr> <td>White Pine</td> <td>High</td> <td>Variable</td> <td>Sapling</td> </tr> <tr> <td>Jack Pine</td> <td>Low</td> <td>5 - 10 feet</td> <td>Sapling</td> </tr> <tr> <td>Oak (spp.)</td> <td>Low</td> <td>5 - 10 feet</td> <td>Sapling</td> </tr> <tr> <td>Red Maple</td> <td>Low</td> <td>5 - 10 feet</td> <td>Sapling</td> </tr> </tbody> </table>		Sub-Canopy Species	Density	Avg. Height	Size	White Pine	High	Variable	Sapling	Jack Pine	Low	5 - 10 feet	Sapling	Oak (spp.)	Low	5 - 10 feet	Sapling	Red Maple	Low	5 - 10 feet	Sapling			
Canopy Species	% Cover	Size Class	DBH	Age																																										
White Oak	30	Pole/Log	8																																											
Red Pine	20	Log/Pole	13																																											
Red Oak	50	Log/Pole	12	99																																										
Sub-Canopy Species	Density	Avg. Height	Size																																											
White Pine	High	Variable	Sapling																																											
Jack Pine	Low	5 - 10 feet	Sapling																																											
Oak (spp.)	Low	5 - 10 feet	Sapling																																											
Red Maple	Low	5 - 10 feet	Sapling																																											
45	42290 - Natural Mixed Pine	Sawtimber Well	27.8	79	111-140	N/A	White pine stand mixed with some red pine and oak. Aspen, jack pine and red maple were removed from stand in 1993.																																							
<table border="1"> <thead> <tr> <th>Canopy Species</th> <th>% Cover</th> <th>Size Class</th> <th>DBH</th> <th>Age</th> </tr> </thead> <tbody> <tr> <td>Red Oak</td> <td>15</td> <td>Log/Pole</td> <td>12</td> <td></td> </tr> <tr> <td>Red Pine</td> <td>30</td> <td>Log/Pole</td> <td>10</td> <td></td> </tr> <tr> <td>White Pine</td> <td>55</td> <td>Log/Pole</td> <td>10</td> <td>79</td> </tr> </tbody> </table>		Canopy Species	% Cover	Size Class	DBH	Age	Red Oak	15	Log/Pole	12		Red Pine	30	Log/Pole	10		White Pine	55	Log/Pole	10	79	<table border="1"> <thead> <tr> <th>Sub-Canopy Species</th> <th>Density</th> <th>Avg. Height</th> <th>Size</th> </tr> </thead> <tbody> <tr> <td>Red Maple</td> <td>Low</td> <td>5 - 10 feet</td> <td>Sapling</td> </tr> <tr> <td>White Pine</td> <td>Medium</td> <td>10 - 20 feet</td> <td>Sapling</td> </tr> <tr> <td>Quaking Aspen</td> <td>Low</td> <td>10 - 20 feet</td> <td>Sapling</td> </tr> <tr> <td>Oak (spp.)</td> <td>Low</td> <td>5 - 10 feet</td> <td>Sapling</td> </tr> </tbody> </table>		Sub-Canopy Species	Density	Avg. Height	Size	Red Maple	Low	5 - 10 feet	Sapling	White Pine	Medium	10 - 20 feet	Sapling	Quaking Aspen	Low	10 - 20 feet	Sapling	Oak (spp.)	Low	5 - 10 feet	Sapling			
Canopy Species	% Cover	Size Class	DBH	Age																																										
Red Oak	15	Log/Pole	12																																											
Red Pine	30	Log/Pole	10																																											
White Pine	55	Log/Pole	10	79																																										
Sub-Canopy Species	Density	Avg. Height	Size																																											
Red Maple	Low	5 - 10 feet	Sapling																																											
White Pine	Medium	10 - 20 feet	Sapling																																											
Quaking Aspen	Low	10 - 20 feet	Sapling																																											
Oak (spp.)	Low	5 - 10 feet	Sapling																																											
46	4191 - Mixed Upland Deciduous with Conifer	Sawtimber Well	9.4	85	81-110	N/A	Stand is a mix of oak, pine and aspen. Overall oak is dominant and is growing well. Stand is small in size and was not treated when adjacent stand to the north/west was. Topography leads to lake and stand is essentially a narrow corridor between lake and adjacent stand. May want to consider leaving stand-not treating.																																							
<table border="1"> <thead> <tr> <th>Canopy Species</th> <th>% Cover</th> <th>Size Class</th> <th>DBH</th> <th>Age</th> </tr> </thead> <tbody> <tr> <td>Red Oak</td> <td>55</td> <td>Log/Pole</td> <td>12</td> <td>85</td> </tr> <tr> <td>White Pine</td> <td>10</td> <td>Log/Pole</td> <td>12</td> <td></td> </tr> <tr> <td>Bigtooth Aspen</td> <td>20</td> <td>Pole</td> <td>8</td> <td></td> </tr> <tr> <td>Red Pine</td> <td>10</td> <td>Log/Pole</td> <td>12</td> <td></td> </tr> </tbody> </table>		Canopy Species	% Cover	Size Class	DBH	Age	Red Oak	55	Log/Pole	12	85	White Pine	10	Log/Pole	12		Bigtooth Aspen	20	Pole	8		Red Pine	10	Log/Pole	12		<table border="1"> <thead> <tr> <th>Sub-Canopy Species</th> <th>Density</th> <th>Avg. Height</th> <th>Size</th> </tr> </thead> <tbody> <tr> <td>White Pine</td> <td>High</td> <td>5 - 10 feet</td> <td>Sapling</td> </tr> </tbody> </table>		Sub-Canopy Species	Density	Avg. Height	Size	White Pine	High	5 - 10 feet	Sapling										
Canopy Species	% Cover	Size Class	DBH	Age																																										
Red Oak	55	Log/Pole	12	85																																										
White Pine	10	Log/Pole	12																																											
Bigtooth Aspen	20	Pole	8																																											
Red Pine	10	Log/Pole	12																																											
Sub-Canopy Species	Density	Avg. Height	Size																																											
White Pine	High	5 - 10 feet	Sapling																																											
47	500 - Water	Nonstocked	19.8			No	Northern portion of Blue Lake.																																							
48	4133 - Aspen, Mixed Pine	Sawtimber Well	17.4	70	81-110	N/A	trace amount of hemlock and cedar within stand																																							
<table border="1"> <thead> <tr> <th>Canopy Species</th> <th>% Cover</th> <th>Size Class</th> <th>DBH</th> <th>Age</th> </tr> </thead> <tbody> <tr> <td>White Pine</td> <td>15</td> <td>Log/Pole</td> <td>12</td> <td></td> </tr> <tr> <td>Bigtooth Aspen</td> <td>40</td> <td>Log/Pole</td> <td>10</td> <td>70</td> </tr> <tr> <td>Red Pine</td> <td>10</td> <td>Log/Pole</td> <td>12</td> <td></td> </tr> <tr> <td>Red Oak</td> <td>25</td> <td>Log/Pole</td> <td>13</td> <td></td> </tr> <tr> <td>Red Maple</td> <td>10</td> <td>Pole/Log</td> <td>8</td> <td></td> </tr> </tbody> </table>		Canopy Species	% Cover	Size Class	DBH	Age	White Pine	15	Log/Pole	12		Bigtooth Aspen	40	Log/Pole	10	70	Red Pine	10	Log/Pole	12		Red Oak	25	Log/Pole	13		Red Maple	10	Pole/Log	8		<table border="1"> <thead> <tr> <th>Sub-Canopy Species</th> <th>Density</th> <th>Avg. Height</th> <th>Size</th> </tr> </thead> <tbody> <tr> <td>White Pine</td> <td>High</td> <td>10 - 20 feet</td> <td>Sapling</td> </tr> </tbody> </table>		Sub-Canopy Species	Density	Avg. Height	Size	White Pine	High	10 - 20 feet	Sapling					
Canopy Species	% Cover	Size Class	DBH	Age																																										
White Pine	15	Log/Pole	12																																											
Bigtooth Aspen	40	Log/Pole	10	70																																										
Red Pine	10	Log/Pole	12																																											
Red Oak	25	Log/Pole	13																																											
Red Maple	10	Pole/Log	8																																											
Sub-Canopy Species	Density	Avg. Height	Size																																											
White Pine	High	10 - 20 feet	Sapling																																											
49	42110 - Planted Red Pine	Poletimber Well	52.1	27	51-80	N/A	Red pine plantation, overall growing well. Some mortality throughout, occasional aspen pockets with white pine red maple and oak scattered throughout																																							
<table border="1"> <thead> <tr> <th>Canopy Species</th> <th>% Cover</th> <th>Size Class</th> <th>DBH</th> <th>Age</th> </tr> </thead> <tbody> <tr> <td>White Pine</td> <td>5</td> <td>Log/Pole</td> <td>10</td> <td></td> </tr> <tr> <td>Red Maple</td> <td>2</td> <td>Log/Pole</td> <td>10</td> <td></td> </tr> <tr> <td>Bigtooth Aspen</td> <td>5</td> <td>Pole/Log</td> <td>8</td> <td></td> </tr> <tr> <td>Red Pine</td> <td>88</td> <td>Pole/Sapling</td> <td>5</td> <td>27</td> </tr> </tbody> </table>		Canopy Species	% Cover	Size Class	DBH	Age	White Pine	5	Log/Pole	10		Red Maple	2	Log/Pole	10		Bigtooth Aspen	5	Pole/Log	8		Red Pine	88	Pole/Sapling	5	27																				
Canopy Species	% Cover	Size Class	DBH	Age																																										
White Pine	5	Log/Pole	10																																											
Red Maple	2	Log/Pole	10																																											
Bigtooth Aspen	5	Pole/Log	8																																											
Red Pine	88	Pole/Sapling	5	27																																										
50	622 - Lowland Shrub	Nonstocked	2.6		Immature	No	Lowland shrub area, tag alder dominant with scattered small aspen and jack pine along edge.																																							



Stand	Level 4 Cover Type	Size Density	Acres	Stand Age	BA Range	Managed Site	General Comments																																			
51	330 - Low-Density Trees	Nonstocked	4.8			No	Grass stand with cherry, red maple and scattered conifers present throughout.																																			
53	4130 - Aspen	Sapling Well	22.4	29	Immature	N/A																																				
<table border="1"> <thead> <tr> <th>Canopy Species</th> <th>% Cover</th> <th>Size Class</th> <th>DBH</th> <th>Age</th> </tr> </thead> <tbody> <tr> <td>Bigtooth Aspen</td> <td>50</td> <td>Sapling/Pole</td> <td>4</td> <td>29</td> </tr> <tr> <td>White Pine</td> <td>5</td> <td>Pole/Sapling</td> <td>6</td> <td></td> </tr> <tr> <td>Black Cherry</td> <td>5</td> <td>Sapling</td> <td>3</td> <td></td> </tr> <tr> <td>Red Maple</td> <td>5</td> <td>Sapling</td> <td>3</td> <td></td> </tr> <tr> <td>Red Oak</td> <td>1</td> <td>Pole/Sapling</td> <td>7</td> <td></td> </tr> <tr> <td>Quaking Aspen</td> <td>34</td> <td>Sapling/Pole</td> <td>4</td> <td></td> </tr> </tbody> </table>								Canopy Species	% Cover	Size Class	DBH	Age	Bigtooth Aspen	50	Sapling/Pole	4	29	White Pine	5	Pole/Sapling	6		Black Cherry	5	Sapling	3		Red Maple	5	Sapling	3		Red Oak	1	Pole/Sapling	7		Quaking Aspen	34	Sapling/Pole	4	
Canopy Species	% Cover	Size Class	DBH	Age																																						
Bigtooth Aspen	50	Sapling/Pole	4	29																																						
White Pine	5	Pole/Sapling	6																																							
Black Cherry	5	Sapling	3																																							
Red Maple	5	Sapling	3																																							
Red Oak	1	Pole/Sapling	7																																							
Quaking Aspen	34	Sapling/Pole	4																																							
54	42110 - Planted Red Pine	Poletimber Well	64.0	27	81-110	N/A	Red pine plantation, growing well.																																			
<table border="1"> <thead> <tr> <th>Canopy Species</th> <th>% Cover</th> <th>Size Class</th> <th>DBH</th> <th>Age</th> </tr> </thead> <tbody> <tr> <td>Red Pine</td> <td>100</td> <td>Pole/Sapling</td> <td>5</td> <td>27</td> </tr> </tbody> </table>								Canopy Species	% Cover	Size Class	DBH	Age	Red Pine	100	Pole/Sapling	5	27																									
Canopy Species	% Cover	Size Class	DBH	Age																																						
Red Pine	100	Pole/Sapling	5	27																																						
55	4130 - Aspen	Sapling Well	31.7	31	Immature	N/A	moderate quality. some areas of patchy stocking. occassional conifers throughout.																																			
<table border="1"> <thead> <tr> <th>Canopy Species</th> <th>% Cover</th> <th>Size Class</th> <th>DBH</th> <th>Age</th> </tr> </thead> <tbody> <tr> <td>Jack Pine</td> <td>6</td> <td>Sapling</td> <td>3</td> <td></td> </tr> <tr> <td>Quaking Aspen</td> <td>40</td> <td>Sapling</td> <td>2</td> <td></td> </tr> <tr> <td>White Pine</td> <td>4</td> <td>Sapling</td> <td>3</td> <td></td> </tr> <tr> <td>Bigtooth Aspen</td> <td>50</td> <td>Sapling</td> <td>4</td> <td>31</td> </tr> </tbody> </table>								Canopy Species	% Cover	Size Class	DBH	Age	Jack Pine	6	Sapling	3		Quaking Aspen	40	Sapling	2		White Pine	4	Sapling	3		Bigtooth Aspen	50	Sapling	4	31										
Canopy Species	% Cover	Size Class	DBH	Age																																						
Jack Pine	6	Sapling	3																																							
Quaking Aspen	40	Sapling	2																																							
White Pine	4	Sapling	3																																							
Bigtooth Aspen	50	Sapling	4	31																																						
57	4130 - Aspen	Sapling Well	41.3	7	Immature	N/A	Cut 2016. Wet along eastern edge.																																			
<table border="1"> <thead> <tr> <th>Canopy Species</th> <th>% Cover</th> <th>Size Class</th> <th>DBH</th> <th>Age</th> </tr> </thead> <tbody> <tr> <td>Red Maple</td> <td>20</td> <td>Pole/Sap/Log</td> <td>8</td> <td></td> </tr> <tr> <td>White Pine</td> <td>5</td> <td>Log/Pole</td> <td>10</td> <td></td> </tr> <tr> <td>Bigtooth Aspen</td> <td>75</td> <td>Sapling</td> <td>3</td> <td>7</td> </tr> </tbody> </table>								Canopy Species	% Cover	Size Class	DBH	Age	Red Maple	20	Pole/Sap/Log	8		White Pine	5	Log/Pole	10		Bigtooth Aspen	75	Sapling	3	7															
Canopy Species	% Cover	Size Class	DBH	Age																																						
Red Maple	20	Pole/Sap/Log	8																																							
White Pine	5	Log/Pole	10																																							
Bigtooth Aspen	75	Sapling	3	7																																						
58	42110 - Planted Red Pine	Poletimber Well	22.0	59	141-170	N/A	thinned in 2005. Thinned again in spring 2016. Also removed all jack pine and aspen.																																			
<table border="1"> <thead> <tr> <th>Canopy Species</th> <th>% Cover</th> <th>Size Class</th> <th>DBH</th> <th>Age</th> </tr> </thead> <tbody> <tr> <td>Red Maple</td> <td>2</td> <td>Pole</td> <td>6</td> <td></td> </tr> <tr> <td>Red Pine</td> <td>98</td> <td>Pole/Log</td> <td>9</td> <td>59</td> </tr> </tbody> </table>								Canopy Species	% Cover	Size Class	DBH	Age	Red Maple	2	Pole	6		Red Pine	98	Pole/Log	9	59																				
Canopy Species	% Cover	Size Class	DBH	Age																																						
Red Maple	2	Pole	6																																							
Red Pine	98	Pole/Log	9	59																																						



Stand	Level 4 Cover Type	Size Density	Acres	Stand Age	BA Range	Managed Site	General Comments																																								
59	4132 - Aspen, Jack Pine	Sapling Well	19.7	6	Immature	N/A	Planted jack pine clearcut spring 2016. Removed all aspen, red maple, and jack pine.																																								
<table border="1"> <thead> <tr> <th>Canopy Species</th> <th>% Cover</th> <th>Size Class</th> <th>DBH</th> <th>Age</th> </tr> </thead> <tbody> <tr> <td>Red Maple</td> <td>5</td> <td>Sapling</td> <td>1</td> <td></td> </tr> <tr> <td>White Pine</td> <td>5</td> <td>Pole/Sapling</td> <td>7</td> <td></td> </tr> <tr> <td>Quaking Aspen</td> <td>5</td> <td>Sapling</td> <td>1</td> <td>6</td> </tr> <tr> <td>Jack Pine</td> <td>30</td> <td>Sapling</td> <td>1</td> <td>6</td> </tr> <tr> <td>Bigtooth Aspen</td> <td>50</td> <td>Sapling</td> <td>2</td> <td>6</td> </tr> <tr> <td>Black Cherry</td> <td>5</td> <td>Sapling</td> <td>1</td> <td></td> </tr> </tbody> </table>								Canopy Species	% Cover	Size Class	DBH	Age	Red Maple	5	Sapling	1		White Pine	5	Pole/Sapling	7		Quaking Aspen	5	Sapling	1	6	Jack Pine	30	Sapling	1	6	Bigtooth Aspen	50	Sapling	2	6	Black Cherry	5	Sapling	1						
Canopy Species	% Cover	Size Class	DBH	Age																																											
Red Maple	5	Sapling	1																																												
White Pine	5	Pole/Sapling	7																																												
Quaking Aspen	5	Sapling	1	6																																											
Jack Pine	30	Sapling	1	6																																											
Bigtooth Aspen	50	Sapling	2	6																																											
Black Cherry	5	Sapling	1																																												
61	622 - Lowland Shrub	Nonstocked	6.0			No	lowland stand with scattered e and p-type species around perimeter.																																								
62	320 - Upland Shrub	Nonstocked	13.7			No	U-type, scattered aspen, cherry and conifer species throughout.																																								
<table border="1"> <thead> <tr> <th>Sub-Canopy Species</th> <th>Density</th> <th>Avg. Height</th> <th>Size</th> </tr> </thead> <tbody> <tr> <td>Black Cherry</td> <td>Low</td> <td></td> <td>Sapling</td> </tr> <tr> <td>Quaking Aspen</td> <td>Medium</td> <td></td> <td>Sapling</td> </tr> <tr> <td>White Pine</td> <td>Low</td> <td></td> <td>Sapling</td> </tr> </tbody> </table>								Sub-Canopy Species	Density	Avg. Height	Size	Black Cherry	Low		Sapling	Quaking Aspen	Medium		Sapling	White Pine	Low		Sapling																								
Sub-Canopy Species	Density	Avg. Height	Size																																												
Black Cherry	Low		Sapling																																												
Quaking Aspen	Medium		Sapling																																												
White Pine	Low		Sapling																																												
63	3105 - Mixed Upland Herbaceous	Nonstocked	12.4			No																																									
64	310 - Herbaceous Openland	Nonstocked	20.9			No	Powerline R.O.W. with road and a gas line																																								
67	4130 - Aspen	Sapling Well	32.7	6	Immature	N/A	Final harvest spring 2016. Original stand was a mix of jack pine (north end) and aspen of variable stocking and quality. Also expect some red maple and cherry.																																								
<table border="1"> <thead> <tr> <th>Canopy Species</th> <th>% Cover</th> <th>Size Class</th> <th>DBH</th> <th>Age</th> </tr> </thead> <tbody> <tr> <td>Red Maple</td> <td>10</td> <td>Sapling</td> <td>1</td> <td></td> </tr> <tr> <td>Paper Birch</td> <td>2</td> <td>Pole</td> <td>6</td> <td></td> </tr> <tr> <td>Jack Pine</td> <td>5</td> <td>Sapling</td> <td>1</td> <td></td> </tr> <tr> <td>Black Cherry</td> <td>10</td> <td>Sapling</td> <td>1</td> <td></td> </tr> <tr> <td>Quaking Aspen</td> <td>18</td> <td>Sapling</td> <td>1</td> <td></td> </tr> <tr> <td>White Pine</td> <td>5</td> <td>Pole/Log</td> <td>8</td> <td></td> </tr> <tr> <td>Bigtooth Aspen</td> <td>50</td> <td>Sapling</td> <td>1</td> <td>6</td> </tr> </tbody> </table>								Canopy Species	% Cover	Size Class	DBH	Age	Red Maple	10	Sapling	1		Paper Birch	2	Pole	6		Jack Pine	5	Sapling	1		Black Cherry	10	Sapling	1		Quaking Aspen	18	Sapling	1		White Pine	5	Pole/Log	8		Bigtooth Aspen	50	Sapling	1	6
Canopy Species	% Cover	Size Class	DBH	Age																																											
Red Maple	10	Sapling	1																																												
Paper Birch	2	Pole	6																																												
Jack Pine	5	Sapling	1																																												
Black Cherry	10	Sapling	1																																												
Quaking Aspen	18	Sapling	1																																												
White Pine	5	Pole/Log	8																																												
Bigtooth Aspen	50	Sapling	1	6																																											



Stand	Level 4 Cover Type	Size Density	Acres	Stand Age	BA Range	Managed Site	General Comments	
69	42200 - Natural White Pine	Sawtimber Well	7.6	98	81-110	N/A	White pine stand next to lake with red maple and aspen present throughout along with occasional cedar and hemlock along lake. Northern portion of stand is more open lowland, Imped together with this stand because of stand size and function of stands buffering lake.	
Canopy Species		% Cover	Size Class	DBH	Age	Sub-Canopy Species		
Quaking Aspen		5	Pole	8		Red Maple		
Bigtooth Aspen		5	Pole	8		Black Cherry		
White Pine		65	Log/Pole	12	98	Tag Alder		
Northern White Cedar		10	Pole/Log	9				
Hemlock		5	Pole/Log	9				
Red Maple		5	Pole	7				
Paper Birch		5	Pole	8				
70	4130 - Aspen	Sapling Well	18.1	26	51-80	N/A	Scattered conifer and hardwood species present.	
Canopy Species		% Cover	Size Class	DBH	Age			
Quaking Aspen		35	Sapling	3				
Bigtooth Aspen		50	Sapling	4	26			
White Pine		5	Pole/Log/Sap	8				
Red Oak		5	Pole/Log	8				
Black Cherry		5	Pole/Sapling	6				
71	6119 - Mixed Lowland Deciduous Forest	Poletimber Well	4.7	65	81-110	N/A	Lowland stand, drainage heading in a northerly direction towards Boardman River, connecting stands 87 and 60 before reaching the river. Red maple and aspen dominant with conifers and other scattered e-type species. Some pockets of stand are quite heavy to aspen, most notably along the border between this stand and stand 77.	
Canopy Species		% Cover	Size Class	DBH	Age	Sub-Canopy Species		
Paper Birch		20	Pole	7		Balsam Fir		
White Pine		2	Log/Pole	12		Tag Alder		
Quaking Aspen		30	Pole/Log	8		Beech		
Balsam Fir		5	Pole/Sapling	5				
Northern White Cedar		5	Pole	8				
Red Maple		38	Pole/Log	8	65			
73	42110 - Planted Red Pine	Sawtimber Well	18.8	66	141-170	N/A	Red pine plantation, wider spacing and planted in spiral pattern. Thinned summer 2016. Also removed aspen pockets.	
Canopy Species		% Cover	Size Class	DBH	Age	Sub-Canopy Species		
Red Maple		5	Log/Pole	10		Quaking Aspen		
Red Pine		90	Log/Pole	10	66	Red Maple		
White Pine		5	Log/Pole	12		Balsam Fir		
75	4133 - Aspen, Mixed Pine	Sapling Well	30.4	6	Immature	N/A	Final harvest spring 2016. Cut aspen, red maple and jack pine. Left white pine, balsam and some paper birch, especially along the creek. Thinned small pocket of red pine in eastern part of stand.	
Canopy Species		% Cover	Size Class	DBH	Age			
Red Oak		5	Pole/Sapling	7				
Red Maple		10	Sapling/Pole	2				
Paper Birch		5	Pole/Log	8				
White Pine		5	Pole/Log/Sap	8				
Bigtooth Aspen		60	Sapling	2	6			
Red Pine		15	Log/Pole	12				



Stand	Level 4 Cover Type	Size Density	Acres	Stand Age	BA Range	Managed Site	General Comments																																
78	4130 - Aspen	Poletimber Medium	7.8	51	51-80	N/A	variable density and size throughtout. some open areas.																																
<table border="1"> <thead> <tr> <th>Canopy Species</th> <th>% Cover</th> <th>Size Class</th> <th>DBH</th> <th>Age</th> </tr> </thead> <tbody> <tr> <td>Bigtooth Aspen</td> <td>94</td> <td>Pole</td> <td>8</td> <td>51</td> </tr> <tr> <td>Jack Pine</td> <td>4</td> <td>Pole</td> <td>6</td> <td></td> </tr> <tr> <td>Black Cherry</td> <td>2</td> <td>Pole/Sapling</td> <td>5</td> <td></td> </tr> </tbody> </table>		Canopy Species	% Cover	Size Class	DBH	Age	Bigtooth Aspen	94	Pole	8	51	Jack Pine	4	Pole	6		Black Cherry	2	Pole/Sapling	5		<table border="1"> <thead> <tr> <th>Sub-Canopy Species</th> <th>Density</th> <th>Avg. Height</th> <th>Size</th> </tr> </thead> <tbody> <tr> <td>Quaking Aspen</td> <td>Medium</td> <td>5 - 10 feet</td> <td>Sapling</td> </tr> <tr> <td>Black Cherry</td> <td>Low</td> <td>5 - 10 feet</td> <td>Sapling</td> </tr> </tbody> </table>		Sub-Canopy Species	Density	Avg. Height	Size	Quaking Aspen	Medium	5 - 10 feet	Sapling	Black Cherry	Low	5 - 10 feet	Sapling				
Canopy Species	% Cover	Size Class	DBH	Age																																			
Bigtooth Aspen	94	Pole	8	51																																			
Jack Pine	4	Pole	6																																				
Black Cherry	2	Pole/Sapling	5																																				
Sub-Canopy Species	Density	Avg. Height	Size																																				
Quaking Aspen	Medium	5 - 10 feet	Sapling																																				
Black Cherry	Low	5 - 10 feet	Sapling																																				
79	320 - Upland Shrub	Nonstocked	4.5			No	Open area adjacent to compression station, includes access road/intersection for oil well roads.																																
80	4133 - Aspen, Mixed Pine	Sapling Well	25.4	17	Immature	N/A	A3 stand with white pine and oak throughtou. White pine more prevalent along western edge. Stand was final harvested in 2005ish, conifers and oak were left as residual.																																
<table border="1"> <thead> <tr> <th>Canopy Species</th> <th>% Cover</th> <th>Size Class</th> <th>DBH</th> <th>Age</th> </tr> </thead> <tbody> <tr> <td>Bigtooth Aspen</td> <td>70</td> <td>Sapling</td> <td>2</td> <td>17</td> </tr> <tr> <td>Red Oak</td> <td>5</td> <td>Log/Pole</td> <td>9</td> <td></td> </tr> <tr> <td>White Pine</td> <td>25</td> <td>Pole/Log/Sap</td> <td>8</td> <td></td> </tr> </tbody> </table>		Canopy Species	% Cover	Size Class	DBH	Age	Bigtooth Aspen	70	Sapling	2	17	Red Oak	5	Log/Pole	9		White Pine	25	Pole/Log/Sap	8																			
Canopy Species	% Cover	Size Class	DBH	Age																																			
Bigtooth Aspen	70	Sapling	2	17																																			
Red Oak	5	Log/Pole	9																																				
White Pine	25	Pole/Log/Sap	8																																				
81	4130 - Aspen	Sapling Well	40.9	17	Immature	N/A	A3 stand with white pine and oak scattered throughtout. Some areas more dense than others. Stand was final harvested in 2005ish, all conifer species and oak were left as residual. A strip along the western edge of the stand was left adjacent to stand 81, most likely as retention and a type of buffer between harvest and wetter areas to the west.																																
<table border="1"> <thead> <tr> <th>Canopy Species</th> <th>% Cover</th> <th>Size Class</th> <th>DBH</th> <th>Age</th> </tr> </thead> <tbody> <tr> <td>Red Maple</td> <td>10</td> <td>Sapling</td> <td>2</td> <td></td> </tr> <tr> <td>White Pine</td> <td>15</td> <td>Pole/Log/Sap</td> <td>7</td> <td></td> </tr> <tr> <td>Red Oak</td> <td>5</td> <td>Log/Pole</td> <td>10</td> <td></td> </tr> <tr> <td>Bigtooth Aspen</td> <td>70</td> <td>Sapling</td> <td>3</td> <td>17</td> </tr> </tbody> </table>		Canopy Species	% Cover	Size Class	DBH	Age	Red Maple	10	Sapling	2		White Pine	15	Pole/Log/Sap	7		Red Oak	5	Log/Pole	10		Bigtooth Aspen	70	Sapling	3	17													
Canopy Species	% Cover	Size Class	DBH	Age																																			
Red Maple	10	Sapling	2																																				
White Pine	15	Pole/Log/Sap	7																																				
Red Oak	5	Log/Pole	10																																				
Bigtooth Aspen	70	Sapling	3	17																																			
82	622 - Lowland Shrub	Nonstocked	5.0			No	L-type stand with conifers at northern edge, mainly consisting of white pine and scattered balsam fir.																																
83	310 - Herbaceous Openland	Nonstocked	2.8			No	Old well site, monitoring wells at edges of stand. One well plugged 2015.																																
85	3105 - Mixed Upland Herbaceous	Nonstocked	2.1			Managed Opening	Looks to be an old well site. Open with some bare ground.																																
86	6229 - Mixed lowland shrub	Nonstocked	36.2			No	Lowland alder stand, very dense. Scattered swamp conifers.																																
		<table border="1"> <thead> <tr> <th>Sub-Canopy Species</th> <th>Density</th> <th>Avg. Height</th> <th>Size</th> </tr> </thead> <tbody> <tr> <td>Tag Alder</td> <td>Full</td> <td></td> <td>Tall Shrub</td> </tr> </tbody> </table>		Sub-Canopy Species	Density	Avg. Height	Size	Tag Alder	Full		Tall Shrub																												
Sub-Canopy Species	Density	Avg. Height	Size																																				
Tag Alder	Full		Tall Shrub																																				



Stand	Level 4 Cover Type	Size Density	Acres	Stand Age	BA Range	Managed Site	General Comments																																						
89	6117 - Lowland Deciduous, Mixed Coniferous	Poletimber Poor	22.5	57	1-50	N/A	Lowland stand, could be considered non-forested but looks to have approximately 25-30% canopy coverage. Balsam fir and aspen around perimeter with e-type species dominant in interior along with dense thickets of alder throughout.																																						
<table border="1"> <thead> <tr> <th>Canopy Species</th> <th>% Cover</th> <th>Size Class</th> <th>DBH</th> <th>Age</th> </tr> </thead> <tbody> <tr> <td>Quaking Aspen</td> <td>25</td> <td>Pole/Log</td> <td>8</td> <td></td> </tr> <tr> <td>Balsam Fir</td> <td>20</td> <td>Sapling/Pole</td> <td>4</td> <td></td> </tr> <tr> <td>Northern White Cedar</td> <td>5</td> <td>Pole</td> <td>6</td> <td></td> </tr> <tr> <td>Paper Birch</td> <td>10</td> <td>Sapling/Pole</td> <td>4</td> <td></td> </tr> <tr> <td>Red Maple</td> <td>35</td> <td>Pole/Sapling</td> <td>6</td> <td>57</td> </tr> </tbody> </table>		Canopy Species	% Cover	Size Class	DBH	Age	Quaking Aspen	25	Pole/Log	8		Balsam Fir	20	Sapling/Pole	4		Northern White Cedar	5	Pole	6		Paper Birch	10	Sapling/Pole	4		Red Maple	35	Pole/Sapling	6	57	<table border="1"> <thead> <tr> <th>Sub-Canopy Species</th> <th>Density</th> <th>Avg. Height</th> <th>Size</th> </tr> </thead> <tbody> <tr> <td>Tag Alder</td> <td>High</td> <td>5 - 10 feet</td> <td>Tall Shrub</td> </tr> </tbody> </table>		Sub-Canopy Species	Density	Avg. Height	Size	Tag Alder	High	5 - 10 feet	Tall Shrub				
Canopy Species	% Cover	Size Class	DBH	Age																																									
Quaking Aspen	25	Pole/Log	8																																										
Balsam Fir	20	Sapling/Pole	4																																										
Northern White Cedar	5	Pole	6																																										
Paper Birch	10	Sapling/Pole	4																																										
Red Maple	35	Pole/Sapling	6	57																																									
Sub-Canopy Species	Density	Avg. Height	Size																																										
Tag Alder	High	5 - 10 feet	Tall Shrub																																										
90	122 - Road/Parking Lot	Nonstocked	2.5			No	Parking lot for Leetsville tr.																																						
91	3303 - Mixed Low Density Trees	Nonstocked	31.6			No	some large oak and white pine really starting to fill in Seedling/saplings consist mainly of aspen, cherry and red maple.																																						
92	4130 - Aspen	Poletimber Well	18.8	40	51-80	N/A																																							
<table border="1"> <thead> <tr> <th>Canopy Species</th> <th>% Cover</th> <th>Size Class</th> <th>DBH</th> <th>Age</th> </tr> </thead> <tbody> <tr> <td>Bigtooth Aspen</td> <td>45</td> <td>Pole</td> <td>6</td> <td></td> </tr> <tr> <td>White Pine</td> <td>2</td> <td>Sapling/Pole</td> <td>4</td> <td></td> </tr> <tr> <td>Balsam Fir</td> <td>3</td> <td>Sapling/Pole</td> <td>4</td> <td></td> </tr> <tr> <td>Quaking Aspen</td> <td>50</td> <td>Pole</td> <td>6</td> <td>40</td> </tr> </tbody> </table>		Canopy Species	% Cover	Size Class	DBH	Age	Bigtooth Aspen	45	Pole	6		White Pine	2	Sapling/Pole	4		Balsam Fir	3	Sapling/Pole	4		Quaking Aspen	50	Pole	6	40	<table border="1"> <thead> <tr> <th>Sub-Canopy Species</th> <th>Density</th> <th>Avg. Height</th> <th>Size</th> </tr> </thead> <tbody> <tr> <td>Balsam Fir</td> <td>Medium</td> <td>10 - 20 feet</td> <td>Sapling</td> </tr> <tr> <td>Black Cherry</td> <td>Low</td> <td>5 - 10 feet</td> <td>Sapling</td> </tr> </tbody> </table>		Sub-Canopy Species	Density	Avg. Height	Size	Balsam Fir	Medium	10 - 20 feet	Sapling	Black Cherry	Low	5 - 10 feet	Sapling					
Canopy Species	% Cover	Size Class	DBH	Age																																									
Bigtooth Aspen	45	Pole	6																																										
White Pine	2	Sapling/Pole	4																																										
Balsam Fir	3	Sapling/Pole	4																																										
Quaking Aspen	50	Pole	6	40																																									
Sub-Canopy Species	Density	Avg. Height	Size																																										
Balsam Fir	Medium	10 - 20 feet	Sapling																																										
Black Cherry	Low	5 - 10 feet	Sapling																																										
94	123 - Other High Intensity Urban	Nonstocked	7.4		Immature		not plowed out in winter of 2022																																						
95	310 - Herbaceous Openland	Nonstocked	2.5		Immature		Old well site. Plugged 2015.																																						
96	3303 - Mixed Low Density Trees	Nonstocked	2.5		Unspecified	No	Small opening with white pine, red maple, cherry and aspen present in low numbers throughout.																																						
97	622 - Lowland Shrub	Nonstocked	9.9			No	lowland stand w/ some e-type species around edges and scattered in interior along w/ bf and cedar. heavy alder																																						
98	310 - Herbaceous Openland	Nonstocked	9.4			No	Opening, aspen clones scattered. Some cherry, pine and red maple as well, mainly in the sapling size class.																																						



Stand	Level 4 Cover Type	Size Density	Acres	Stand Age	BA Range	Managed Site	General Comments
-------	--------------------	--------------	-------	-----------	----------	--------------	------------------

99 6128 - Lowland Coniferous, Mixed Deciduous Poletimber Well 3.0 60 51-80 N/A

Canopy Species	% Cover	Size Class	DBH	Age	Sub-Canopy Species	Density	Avg. Height	Size
Balsam Fir	45	Pole	7	60	Tag Alder	Medium	5 - 10 feet	Tall Shrub
Northern White Cedar	25	Pole/Log	8		Balsam Fir	High	10 - 20 feet	Sapling
Hemlock	3	Pole	8					
Red Maple	12	Pole	9					
Quaking Aspen	15	Pole/Sapling	6					

101 4199 - Other Mixed Upland Deciduous Poletimber Well 9.9 60 51-80 N/A

Canopy Species	% Cover	Size Class	DBH	Age	Sub-Canopy Species	Density	Avg. Height	Size
White Pine	2	Log/Pole	10		Balsam Fir	High	10 - 20 feet	Sapling
Bigtooth Aspen	23	Pole/Log	8					
Paper Birch	20	Pole/Log	8					
Quaking Aspen	15	Pole/Log	8	55				
Balsam Fir	15	Pole/Sapling	6					
Red Maple	25	Pole/Log	8	60				

102 122 - Road/Parking Lot Nonstocked 16.6 No Stand consists of CR 612 corridor.

103 110 - Low Intensity Urban Nonstocked 1.6 Immature No powerline right-of-way.

105 6128 - Lowland Coniferous, Mixed Deciduous Poletimber Poor 12.3 55 1-50 N/A

Canopy Species	% Cover	Size Class	DBH	Age	Sub-Canopy Species	Density	Avg. Height	Size
Quaking Aspen	10	Pole	6		Tag Alder	High	5 - 10 feet	Tall Shrub
Northern White Cedar	25	Pole	8					
Red Maple	25	Pole	8					

Lowland stand, low density in places-overall about 40% canopy coverage. Heavy alder throughout, especially in more open areas. Quite a bit of mortality in black ash. Pockets of stand dominated by cedar and balsam fir.

106 4130 - Aspen Poletimber Well 73.5 55 81-110 N/A

Canopy Species	% Cover	Size Class	DBH	Age	Sub-Canopy Species	Density	Avg. Height	Size
Red Maple	5	Pole/Sapling	6		Red Maple	Medium	5 - 10 feet	Sapling
Quaking Aspen	50	Pole	8	55				
Balsam Fir	5	Pole/Sapling	6					
Red Pine	5	Log/Pole	10					
White Pine	3	Pole/Sap/Log	8					
Black Cherry	2	Pole/Sapling	5					
Bigtooth Aspen	30	Pole/Log	8	55				

Aspen stand (mixture of quaking and big-tooth clones) with balsam fir and white pine scattered throughout along with red maple and cherry. Conifer species most numerous in south and western portions of stand as well as areas adjacent to stand.



Stand	Level 4 Cover Type	Size Density	Acres	Stand Age	BA Range	Managed Site	General Comments
-------	--------------------	--------------	-------	-----------	----------	--------------	------------------

107 6128 - Lowland Coniferous, Mixed Deciduous Poletimber Well 39.8 91 51-80 N/A

Canopy Species	% Cover	Size Class	DBH	Age	Sub-Canopy Species	Density	Avg. Height	Size
Red Maple	5	Pole	6		Red Maple	Low	10 - 20 feet	Sapling
White Pine	10	Log/Pole	10		Tag Alder	Medium	5 - 10 feet	Tall Shrub
Paper Birch	15	Pole/Sapling	6					
Northern White Cedar	35	Pole	8	91				
Quaking Aspen	15	Pole	8					
Balsam Fir	20	Pole	6					

108 310 - Herbaceous Openland Nonstocked 2.1 Well site-permit #32488.

109 500 - Water Nonstocked 0.9 No Small corner of South Selkirk Lake

110 122 - Road/Parking Lot Nonstocked 8.0 Road/pipeline accessing compression station and well site throughout section.

111 4130 - Aspen Poletimber Well 66.2 51 51-80 N/A aspen stand, mix of quaking and big tooth. variable in terms of density, dbh and overall quality. some open pockets throughout stand. Rec trail runs through the stand

Canopy Species	% Cover	Size Class	DBH	Age	Sub-Canopy Species	Density	Avg. Height	Size
Black Cherry	5	Pole	6		Quaking Aspen	Low	5 - 10 feet	Sapling
Quaking Aspen	70	Pole	8	51	White Pine	Medium	10 - 20 feet	Sapling
White Pine	5	Pole/Sapling	6					
Bigtooth Aspen	20	Pole	8					

112 310 - Herbaceous Openland Nonstocked 1.9 No

113 3104 - Degraded Nonstocked 2.1 Small opening, most likely old well site. Some seedlings scattered throughout.

114 622 - Lowland Shrub Nonstocked 2.9 No tag alder

Sub-Canopy Species	Density	Avg. Height	Size
Alder	Full		Tall Shrub



Stand	Level 4 Cover Type	Size Density	Acres	Stand Age	BA Range	Managed Site	General Comments																																																															
116	42350 - Upland Hemlock	Poletimber Well	5.1	93	111-140	N/A	Small transition stand at western edge of 111. Hemlock dominated with red maple, paper birch, white pine and aspen present.																																																															
<table border="1"> <thead> <tr> <th>Canopy Species</th> <th>% Cover</th> <th>Size Class</th> <th>DBH</th> <th>Age</th> </tr> </thead> <tbody> <tr> <td>Hemlock</td> <td>75</td> <td>Pole/Log</td> <td>8</td> <td>93</td> </tr> <tr> <td>Red Maple</td> <td>10</td> <td>Pole/Log</td> <td>8</td> <td></td> </tr> <tr> <td>Paper Birch</td> <td>5</td> <td>Pole</td> <td>8</td> <td></td> </tr> <tr> <td>Bigtooth Aspen</td> <td>3</td> <td>Pole</td> <td>8</td> <td></td> </tr> <tr> <td>Northern White Cedar</td> <td>2</td> <td>Pole</td> <td>7</td> <td></td> </tr> <tr> <td>White Pine</td> <td>5</td> <td>Log/XLog</td> <td>20</td> <td></td> </tr> </tbody> </table>								Canopy Species	% Cover	Size Class	DBH	Age	Hemlock	75	Pole/Log	8	93	Red Maple	10	Pole/Log	8		Paper Birch	5	Pole	8		Bigtooth Aspen	3	Pole	8		Northern White Cedar	2	Pole	7		White Pine	5	Log/XLog	20																													
Canopy Species	% Cover	Size Class	DBH	Age																																																																		
Hemlock	75	Pole/Log	8	93																																																																		
Red Maple	10	Pole/Log	8																																																																			
Paper Birch	5	Pole	8																																																																			
Bigtooth Aspen	3	Pole	8																																																																			
Northern White Cedar	2	Pole	7																																																																			
White Pine	5	Log/XLog	20																																																																			
117	42110 - Planted Red Pine	Poletimber Well	12.0	27	81-110	N/A	Small red pine plantation, growing well.																																																															
<table border="1"> <thead> <tr> <th>Canopy Species</th> <th>% Cover</th> <th>Size Class</th> <th>DBH</th> <th>Age</th> </tr> </thead> <tbody> <tr> <td>Red Pine</td> <td>100</td> <td>Pole</td> <td>6</td> <td>27</td> </tr> </tbody> </table>								Canopy Species	% Cover	Size Class	DBH	Age	Red Pine	100	Pole	6	27																																																					
Canopy Species	% Cover	Size Class	DBH	Age																																																																		
Red Pine	100	Pole	6	27																																																																		
118	622 - Lowland Shrub	Nonstocked	7.7			No	Lowland shrub stand																																																															
119	622 - Lowland Shrub	Nonstocked	47.0			No	Lowland stand, dominated by tag alder. Some small aspen throughout along with some red maple white pine and cedar common in southern portion of stand along river corridor.																																																															
120	310 - Herbaceous Openland	Nonstocked	1.7		Immature		Well site, adjacent to pipeline. permit#39143.																																																															
121	4319 - Mixed Upland Forest	Poletimber Well	15.8	73	81-110	N/A	Wet in places, difficult access because of boardman river, swamp land and private property.																																																															
<table border="1"> <thead> <tr> <th>Canopy Species</th> <th>% Cover</th> <th>Size Class</th> <th>DBH</th> <th>Age</th> </tr> </thead> <tbody> <tr> <td>Balsam Fir</td> <td>5</td> <td>Pole/Sapling</td> <td>6</td> <td></td> </tr> <tr> <td>Northern White Cedar</td> <td>10</td> <td>Pole/Log</td> <td>9</td> <td></td> </tr> <tr> <td>White Pine</td> <td>30</td> <td>Log/Pole</td> <td>12</td> <td></td> </tr> <tr> <td>Hemlock</td> <td>10</td> <td>Log/Pole</td> <td>10</td> <td></td> </tr> <tr> <td>Red Maple</td> <td>10</td> <td>Pole</td> <td>8</td> <td></td> </tr> <tr> <td>Quaking Aspen</td> <td>35</td> <td>Pole/Log</td> <td>8</td> <td>73</td> </tr> </tbody> </table>								Canopy Species	% Cover	Size Class	DBH	Age	Balsam Fir	5	Pole/Sapling	6		Northern White Cedar	10	Pole/Log	9		White Pine	30	Log/Pole	12		Hemlock	10	Log/Pole	10		Red Maple	10	Pole	8		Quaking Aspen	35	Pole/Log	8	73																												
Canopy Species	% Cover	Size Class	DBH	Age																																																																		
Balsam Fir	5	Pole/Sapling	6																																																																			
Northern White Cedar	10	Pole/Log	9																																																																			
White Pine	30	Log/Pole	12																																																																			
Hemlock	10	Log/Pole	10																																																																			
Red Maple	10	Pole	8																																																																			
Quaking Aspen	35	Pole/Log	8	73																																																																		
122	6128 - Lowland Coniferous, Mixed Deciduous	Poletimber Medium	29.0	61	51-80	N/A	Mixed lowland stand, some variability along edges. Areas where more aspen are present, difficult type line to map. Quite a few pockets of lowland brush throughout stand as well. Density of these pockets along with areas of wet ground made access to internal areas of stand tricky... Some areas of very dense balsam fir understory. drain running through senter of stand towards 11, in a sw direction. Cedar more prevalent along western edge and north. Aspen more common in eastern portions of stand near wheeler lake rd. Old pipeline rd runs through stand, very wet.																																																															
<table border="1"> <thead> <tr> <th>Canopy Species</th> <th>% Cover</th> <th>Size Class</th> <th>DBH</th> <th>Age</th> <th>Sub-Canopy Species</th> <th>Density</th> <th>Avg. Height</th> <th>Size</th> </tr> </thead> <tbody> <tr> <td>White Pine</td> <td>5</td> <td>Log/Pole/Sap</td> <td>12</td> <td></td> <td>White Pine</td> <td>Medium</td> <td>5 - 10 feet</td> <td>Sapling</td> </tr> <tr> <td>Northern White Cedar</td> <td>25</td> <td>Pole/Log</td> <td>8</td> <td></td> <td>Tag Alder</td> <td>Medium</td> <td>< 5 feet</td> <td>Tall Shrub</td> </tr> <tr> <td>Hemlock</td> <td>5</td> <td>Log/Pole</td> <td>10</td> <td></td> <td>Balsam Fir</td> <td>Medium</td> <td>5 - 10 feet</td> <td>Sapling</td> </tr> <tr> <td>Paper Birch</td> <td>5</td> <td>Pole/Sapling</td> <td>6</td> <td></td> <td></td> <td></td> <td></td> <td></td> </tr> <tr> <td>Quaking Aspen</td> <td>20</td> <td>Pole</td> <td>7</td> <td></td> <td></td> <td></td> <td></td> <td></td> </tr> <tr> <td>Bigtooth Aspen</td> <td>5</td> <td>Pole</td> <td>8</td> <td></td> <td></td> <td></td> <td></td> <td></td> </tr> </tbody> </table>								Canopy Species	% Cover	Size Class	DBH	Age	Sub-Canopy Species	Density	Avg. Height	Size	White Pine	5	Log/Pole/Sap	12		White Pine	Medium	5 - 10 feet	Sapling	Northern White Cedar	25	Pole/Log	8		Tag Alder	Medium	< 5 feet	Tall Shrub	Hemlock	5	Log/Pole	10		Balsam Fir	Medium	5 - 10 feet	Sapling	Paper Birch	5	Pole/Sapling	6						Quaking Aspen	20	Pole	7						Bigtooth Aspen	5	Pole	8					
Canopy Species	% Cover	Size Class	DBH	Age	Sub-Canopy Species	Density	Avg. Height	Size																																																														
White Pine	5	Log/Pole/Sap	12		White Pine	Medium	5 - 10 feet	Sapling																																																														
Northern White Cedar	25	Pole/Log	8		Tag Alder	Medium	< 5 feet	Tall Shrub																																																														
Hemlock	5	Log/Pole	10		Balsam Fir	Medium	5 - 10 feet	Sapling																																																														
Paper Birch	5	Pole/Sapling	6																																																																			
Quaking Aspen	20	Pole	7																																																																			
Bigtooth Aspen	5	Pole	8																																																																			



Stand	Level 4 Cover Type	Size Density	Acres	Stand Age	BA Range	Managed Site	General Comments
-------	--------------------	--------------	-------	-----------	----------	--------------	------------------

123 4130 - Aspen Sapling Well 15.9 6 Immature N/A Final harvest spring 2016. Left oak, balsam fir, white pine and a few maples. Wet along southern edge.

Canopy Species	% Cover	Size Class	DBH	Age
Quaking Aspen	15	Sapling	1	6
Balsam Fir	5	Pole	6	
Red Maple	15	Sapling/Pole	1	
Red Oak	5	Pole	8	
White Pine	5	Log/Pole	10	
Bigtooth Aspen	55	Sapling	2	6

124 6128 - Lowland Coniferous, Mixed Deciduous Sawtimber Well 7.6 92 81-110 N/A Mixed stand of hemlock, white pine, paper birch and scattered cedar (pockets) adjacent to boardman river. Mix of lowland/upland. Occasional pockets of e-type hardwoods. Some wet areas where stand blends into river corridor stand to the north.

Canopy Species	% Cover	Size Class	DBH	Age	Sub-Canopy Species	Density	Avg. Height	Size
White Pine	2	Log/Pole	13		Balsam Fir	Medium	10 - 20 feet	Sapling
Hemlock	45	Log/Pole	10	92	Red Maple	Low	5 - 10 feet	Sapling
Northern White Cedar	3	Pole/Log	8		Tag Alder	Low	5 - 10 feet	Tall Shrub
Paper Birch	10	Pole	6					
Balsam Fir	20	Pole/Sapling	6					

125 4136 - Aspen, Mixed Conifer Poletimber Well 23.0 43 N/A small firewood sale happened at the intersection of 612 and wheeler lake rd in

Canopy Species	% Cover	Size Class	DBH	Age	Sub-Canopy Species	Density	Avg. Height	Size
Balsam Fir	10	Pole	6		Balsam Fir	High	10 - 20 feet	Sapling
White Pine	10	Pole/Log	8		White Pine	Medium	10 - 20 feet	Sapling
Black Cherry	5	Pole	7					
Red Maple	3	Pole/Sap/Log	8					
Basswood	5	Pole/Log	8					
Bigtooth Aspen	67	Pole	8	43				

126 4130 - Aspen Poletimber Well 29.3 45 81-110 N/A

Canopy Species	% Cover	Size Class	DBH	Age	Sub-Canopy Species	Density	Avg. Height	Size
Quaking Aspen	55	Pole	8	45	Red Maple	Low	5 - 10 feet	Sapling
Balsam Fir	2	Pole	6		Balsam Fir	Medium	10 - 20 feet	Sapling
Bigtooth Aspen	35	Pole/Log	8	45	White Pine	Low	10 - 20 feet	Sapling
White Pine	3	Pole/Log	8					
Red Maple	5	Pole/Sapling	6					