

Draft Management Areas for the Western Upper Peninsula Ecoregion

The map below shows Management Areas (MAs) for the Western Upper Peninsula Ecoregion. The current boundaries are based on input received from both internal and external stakeholders. The various attributes listed below were considered in determining MA boundaries. These MAs will provide a framework for providing management direction in a Western Upper Peninsula Regional State Forest Management Plan for the next ten year period.

As the Western Upper Peninsula Regional State Forest Plan is developed, there will be several opportunities for public input: during the current early stage of plan development; after a first draft of a plan is completed; and when a final draft of the plan is completed. Comments from stakeholder organizations and the public are an important part of this planning process. Please see the web document [A stakeholders Guide to Regional State Forest Management Planning](#) for more information about the regional planning process and specific public input opportunities.

Public input is currently needed to develop of concepts of management for forest cover types within the 35 Management Areas in the ecoregion. Links are provided below to briefs for each MA. Each of these briefs contain maps of the MA, a discussion of the attributes that are associated with the MA, a discussion of the current condition of the major cover types in the MA, and a discussion of preliminary concepts of management for these cover types.

Public input regarding the preliminary concepts of management for each MA can be sent by email to DNR-WUP-Eco-Team@michigan.gov or by postal mail to: WUP Ecoteam, DNR Marquette OSC, US-41 South, Marquette, MI 49855. The period for public comment is open until October 10, 2008.

We thank you for taking the time to help the DNR in this planning effort, and we look forward to hearing from you.

ATTRIBUTES THAT WERE USED IN FORMING MANAGEMENT AREAS IN THE WESTERN UPPER PENINSULA ECOREGION

Ownership Attributes:

1. Adjacency to other public (including DNR parks and wildlife areas) or private ownerships, and also considering their varying intensity of stewardship and protection.
2. Percentage of the landscape in different public and private ownerships.
3. Consideration of ownership size and connectivity.
4. Areas with existing DNR management plans.

Social/Economic Attributes:

1. Proximity to wood product markets.
2. Proximity to population areas and major transportation arteries.
3. Trends in population growth and recreation demands.
4. Proximity to known historical/cultural sites.

5. Degree of access.

Ecological Attributes:

1. Similar site potential as expressed by habitat type.
 2. Historic vegetative composition.
 3. Current vegetative composition and structural characteristics.
 4. Wildlife species distribution patterns for select species (including threatened and endangered species and those defined by the DNR Wildlife Action Plan (WAP)).
 5. Proximity to known ecologically sensitive sites.
 6. Existing forest connectivity or fragmentation.
 7. Analyses of watersheds and the climate, bedrock geology, glacial landform and soils in Ecological Classification Systems.
-

[General Western Upper Peninsula Management Concepts](#)

[WUP MA 1 – Amasa Plains](#)

[WUP MA 2 – Baraga Plains](#)

[WUP MA 3 – Brampton Lake Plain](#)

[WUP MA 4 – Brule/Iron River](#)

[WUP MA 5 – Cassidy Creek](#)

[WUP MA 6 – Central Houghton](#)

[WUP MA 7 – Central Keweenaw](#)

[WUP MA 8 – Chain Lakes Moraines](#)

[WUP MA 9 – Chatham/Autrain Moraines](#)

[WUP MA 10 – Covington/Ned Lake](#)

[WUP MA 11 – Cyr Swamp](#)

[WUP MA 12 – Dead Horse Moraines](#)

[WUP MA 13 – Floodwood Plains](#)

[WUP MA 14 – Fourteen Mile Point Lake Plain](#)

[WUP MA 15 – Green Bay Lake Plain](#)

[WUP MA 16 – Groveland](#)

[WUP MA 17 – Huron Mountains](#)

[WUP MA 18 – Keweenaw Tip](#)

[WUP MA 19 – Menge Creek](#)

[WUP MA 20 – Menominee End Moraine](#)

[WUP MA 21 – Michigamme Reservoir](#)

[WUP MA 22 – Nathan/Banat Moraines](#)

[WUP MA 23 – Net River](#)

[WUP MA 24 – North Menominee](#)

[WUP MA 25 – Norwich](#)

[WUP MA 26 – Palmer Moraines](#)

[WUP MA 27 – Panola Plains](#)

[WUP MA 28 – Peavy End Moraine](#)

[WUP MA 29 – Peshekee Highlands](#)

[WUP MA 30 – Ralph Ground Moraine](#)

[WUP MA 31 – Sand River Lake Plain](#)

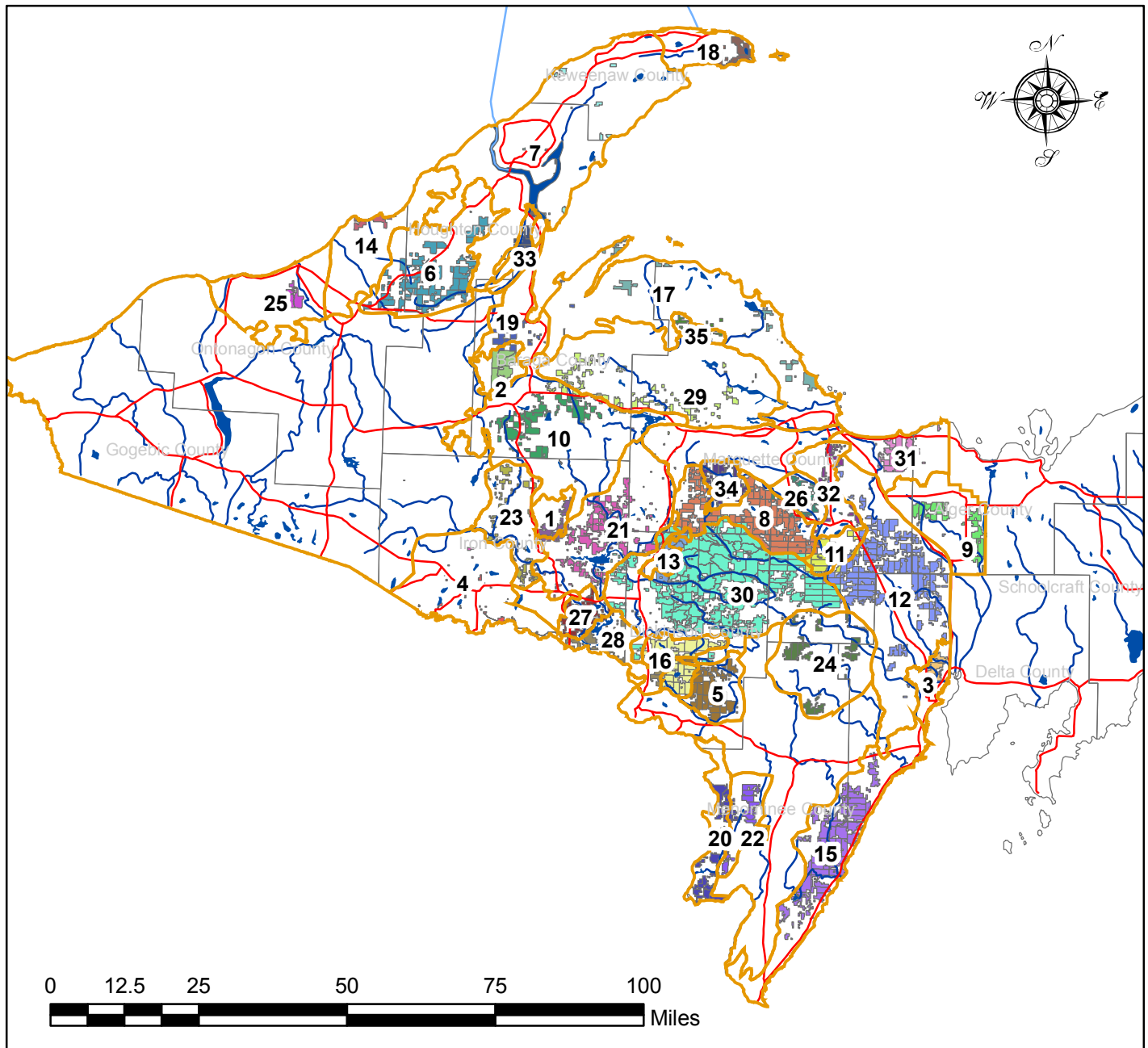
[WUP MA 32 – Sand Plains](#)

[WUP MA 33 – Sturgeon Sloughs](#)

[WUP MA 34 – Voelker Plains](#)

[WUP MA 35 – Yellow Dog Plains](#)

WUP State Forest Management Areas



Legend

1 Amasa Plains	10 Covington/Ned Lake	19 Menge Creek	28 Peavy Moraine
2 Baraga Plains	11 Cyr Swamp	20 Menominee End Moraine	29 Peshekee Highlands
3 Brampton Lake Plain	12 Dead Horse Moraines	21 Michigamme Reservoir	30 Ralph Ground Moraine
4 Brule-Iron River Tracts	13 Floodwood Plains	22 Nathan/Banat Moraines	31 Sand River Lake Plain
5 Cassidy Creek	14 Fourteen Mile Point Lake Plain	23 Net River	32 Sands Plains
6 Central Houghton	15 Green Bay Lake Plain	24 North Menominee Moraines	33 Sturgeon Sloughs
7 Central Keweenaw	16 Groveland	25 Norwich Plain	34 Voelker Plains
8 Chain Lakes Moraine	17 Huron Mountains	26 Palmer Moraine	35 Yellowdog Plains
9 Chatham/Autrain Moraines	18 Keweenaw Tip	27 Panola Plains	