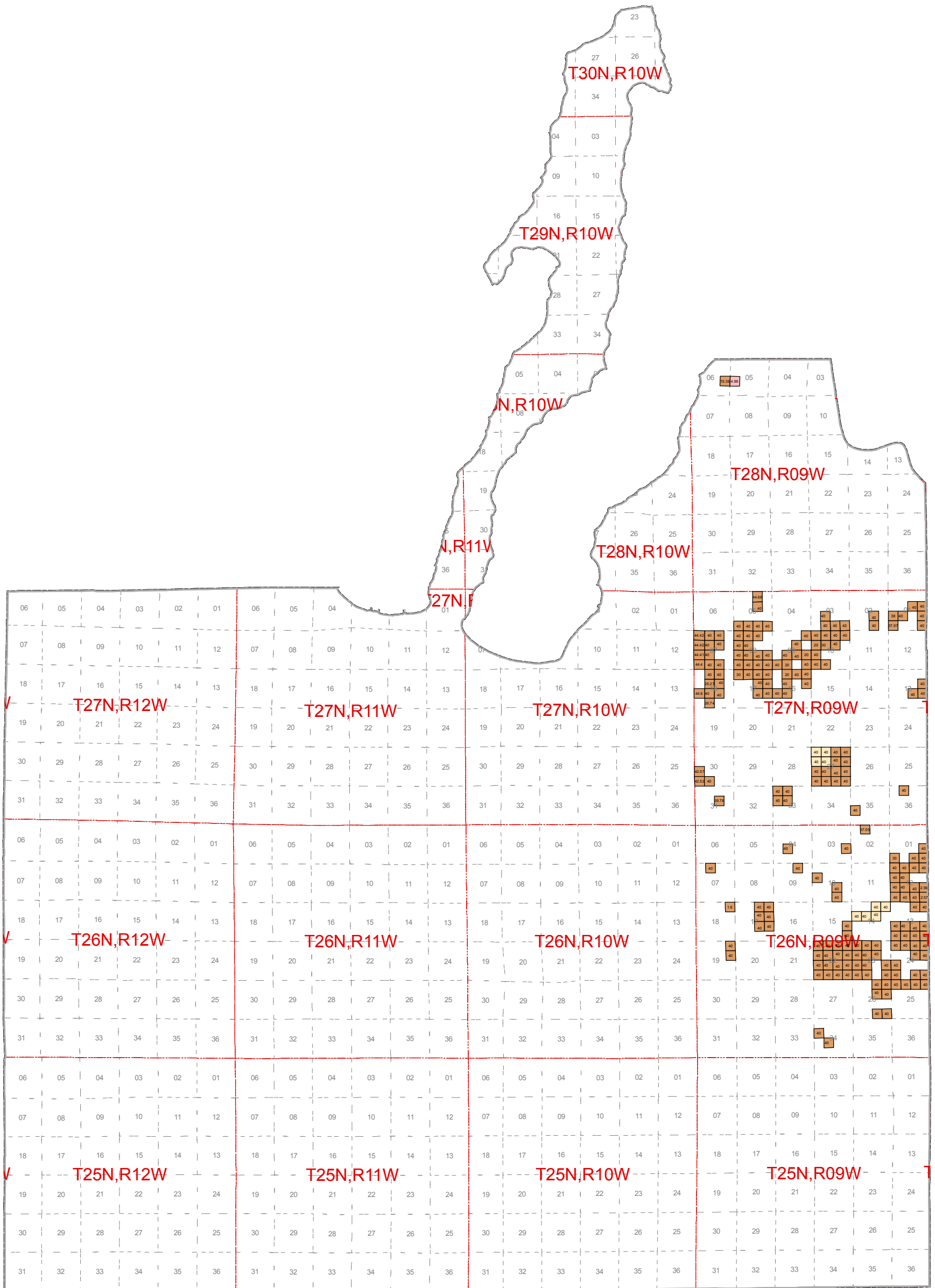




October 2010 Mineral Lease Auction Grand Traverse County

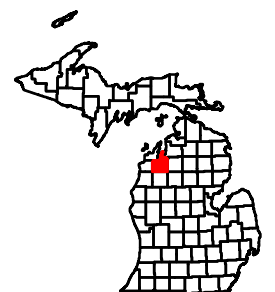


Legend

- Atlas Gas & Oil Company, LLC
- Bayside Energy LLC
- Borders Exploration L.L.C.
- BreitBurn Operating Limited Partnership
- Coughlin Land Services, LLC
- Crystal Lake Resources L.L.C.
- DTE Gas Storage Company
- Dennis R. Schumde, d/b/a
- Encana Oil & Gas (USA) Inc.

- Harvey M. Langworthy
- Jordan Development Company, L.L.C.
- Kosco Energy Group, LLC
- Larks Properties, LLC
- Meridian Energy Corporation
- Monitor Energy Partners, L.P.
- Muskegon Development Company
- New Horizon Energy Company L.L.C.
- Northcentral Exploration, LLC

- Presidium Antrim West, LC
- Ranch Production, L.L.C.
- SRW, Inc.
- Savoy Energy, L.P.
- Strickler Resources Limited Partnership
- Trendwell Energy Corporation
- Western Land Services, Inc.
- Whiting Oil and Gas Corporation
- Counties



= Lease Acres

Note: Some Leased blocks may contain more than one lessee. See Spreadsheet for more detailed information.