

How to Cruise on Paper

You've headed to the field, ready to cruise and your battery just died on your mobile device. Or you forgot your device at the office. Or you don't have a device that can use MobileMap. What do you do?

- Return to the office?
- Find something else to do?
- Continue with your planned cruise on paper?

Follow the steps below if you have chosen "c", to continue with your cruise on paper.

First, you take out your emergency cruise kit. If you don't have one, you need to make sure there is one in your vest and/or vehicle. This kit should include maps of your work/treatment areas, tally cards, limiting distance tables, pencil, alternate way of GPSing and a snickers bar (just in case).

Hopefully you have some sort of map with you of the cruise unit. (See the emergency cruise kit above). This could be using Collector, an Avenza map, or just a paper copy of a treatment map. You can lay out your cruise grid, starting from a known point, and compass and pace to your cruise points. If you don't have a good map of your sale boundary, you may have to keep on your compass line until you reach the red line. You need to be sure that all points within the sale area are collected, even on the edge. Keep a map of your point locations (Figure 1), or if you do have a way to GPS the coordinates with another mobile device (Collector, Avenza, Garmin, etc), you can do that (Figure 2).

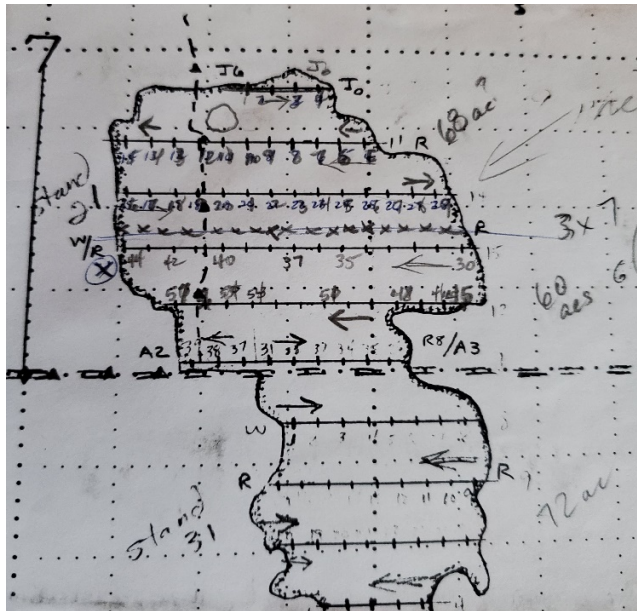


Figure 1 - Map of plot layout without using GPS

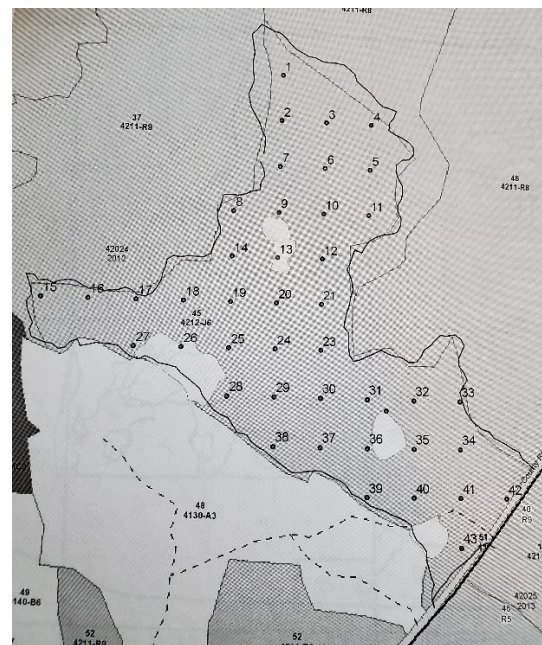


Figure 2 - Map of plot layout using GPS

Next, you will have to determine what is the best cruise sample type to use. For paper cruising the easiest to use is First Tree North (FTN), Big BAF (BB), or Measure/Count Plots (PCM). Sample Tree Ratio (STR) could be used if you can keep good track of tally ratios on species/products.

Using the tally card (Figure 3), record your plot measure trees and tally trees (Figures 4, 5 & 6).

Sale Name: _____ VDU: _____												
Cruiser: _____					Date: _____							
FCS Key: _____					BAF: _____ Big BAF: _____							
Sample Type: STR BB PCM FTN Tally PCM Ratio:												
Plot	Sp	Pr	DBH	H4	HP	HS	Br	DP	DS	LP	SH	TM

Figure 3 - Tally card

Sale Name: April Fools VDU: _____												
Cruiser: Big Tim					Date: 04/01/2020							
FCS Key: 42200200					BAF: 20 Big BAF: _____							
Sample Type: STR BB PCM FTN Tally PCM Ratio:												
Plot	Sp	Pr	DBH	H4	HP	HS	Br	DP	DS	LP	SH	TM
1	3	2	8	34			0				0.5	M
	3	2										T
	1	2	6	18			0				0.5	M
	3	1	12	45			0				0.5	M
	1	2										T
2	10	2	8	40			2				0.5	M
	3	2	9	38			0				0.5	M
	3	2										T
	3	2										T
	3	2										T
	10	2										T

Figure 4 – FTN Tally card example

Sale Name: April Fools VDU: _____												
Cruiser: Big Tim					Date: 04/01/2020							
FCS Key: 42200200					BAF: 20 Big BAF: _____							
Sample Type: STR BB PCM FTN Tally PCM Ratio: 1:3												
Plot	Sp	Pr	DBH	H4	HP	HS	Br	DP	DS	LP	SH	TM
1	31	3	12	56			0				0.5	M
	31	3	10	49			0				0.5	M
	31	3	13	55			0				0.5	M
	31	3	8	38			0				0.5	M
	32	2	8	42			0				0.5	M
2	31	3										T
	31	3										T
	32	2										T
	31	3										T
	32	2										T
3	32	2										T
	32	2										T
	31	3										T
4	31	3	14	56			2				0.5	M
	31	3	12	60			0				0.5	M
	32	2	8	46			0				0.5	M
	32	2	6	18			0				0.5	M
5												T

Figure 5 – PCM Tally card example

Sale Name: April Fools VDU: _____												
Cruiser: Big Tim					Date: 04/01/2020							
FCS Key: 42200200					BAF: 20 Big BAF: 40							
Sample Type: STR BB PCM FTN Tally PCM Ratio:												
Plot	Sp	Pr	DBH	H4	HP	HS	Br	DP	DS	LP	SH	TM
1	31	3										T
	31	3										T
	31	3										T
	32	2										T
	31	3										T
	31	3										T
	32	2										T
	31	3	14	68			0				0.5	M
	31	3	12	55			0				0.5	M

Figure 6 – BB Tally card example

Yay! You've saved the day and cruised a stand on paper! But now what? The data is not in MobileMap! Back to your old data entry skills. You will now have to enter your collected data into MobileMap. Plot locations may have to be manually entered also, but depending on how these were captured will determine how they are entered. See how to enter all data below.

You will need a device that has MobileMap on it (android phone or tablet). You may find it easier to download "DeX for PC" which when your device is plugged into your computer will make MobileMap look like a desktop application, and you can use your mouse and keyboard to navigate through the program instead of using a smaller screen.

Cruise Units:

1. Cruise Unit Features are determined when a Cruise Unit is set up. These attributes are carried over to Plots features. The Sample Type is determined at the Cruise Unit level.

Plot locations:

1. If GPS plots were created in MobileMap and exported to another program (Collector, Avenza, Garmin, etc) and used when cruising, then you would go ahead with data entry in MobileMap as you would in the field.
 - Click on the plot
 - Choose the Tree icon
 - Enter data
 - Save
 - Switch Status from Planned to Cruised
2. If no plots were created prior to field data collection and a GPS is used to capture those plot locations, then you would import the GPS locations as a shapefile in MobileMap and copy/paste into Plots, or heads-up digitize each Plot using the shapefile as a guide. The Create new Plot feature will open.
 - Edit the Plot ID (plot number) and Sample Type (if using PCM)
 - Choose the Tree icon
 - Enter data
 - Save
 - Switch Status from Planned to Cruised
3. If no plots were created prior to field data collection and you are compassing and pacing between plots, then you would heads-up digitize each Plot in MobileMap as best as you can. The Create new Plot feature will open. Note: The locations may not be accurate, but they should be in the general location of where they were taken.
 - Edit the Plot ID (plot number) and Sample Type (if using PCM)
 - Choose the Tree icon
 - Enter data
 - Save
 - Switch Status from Planned to Cruised