

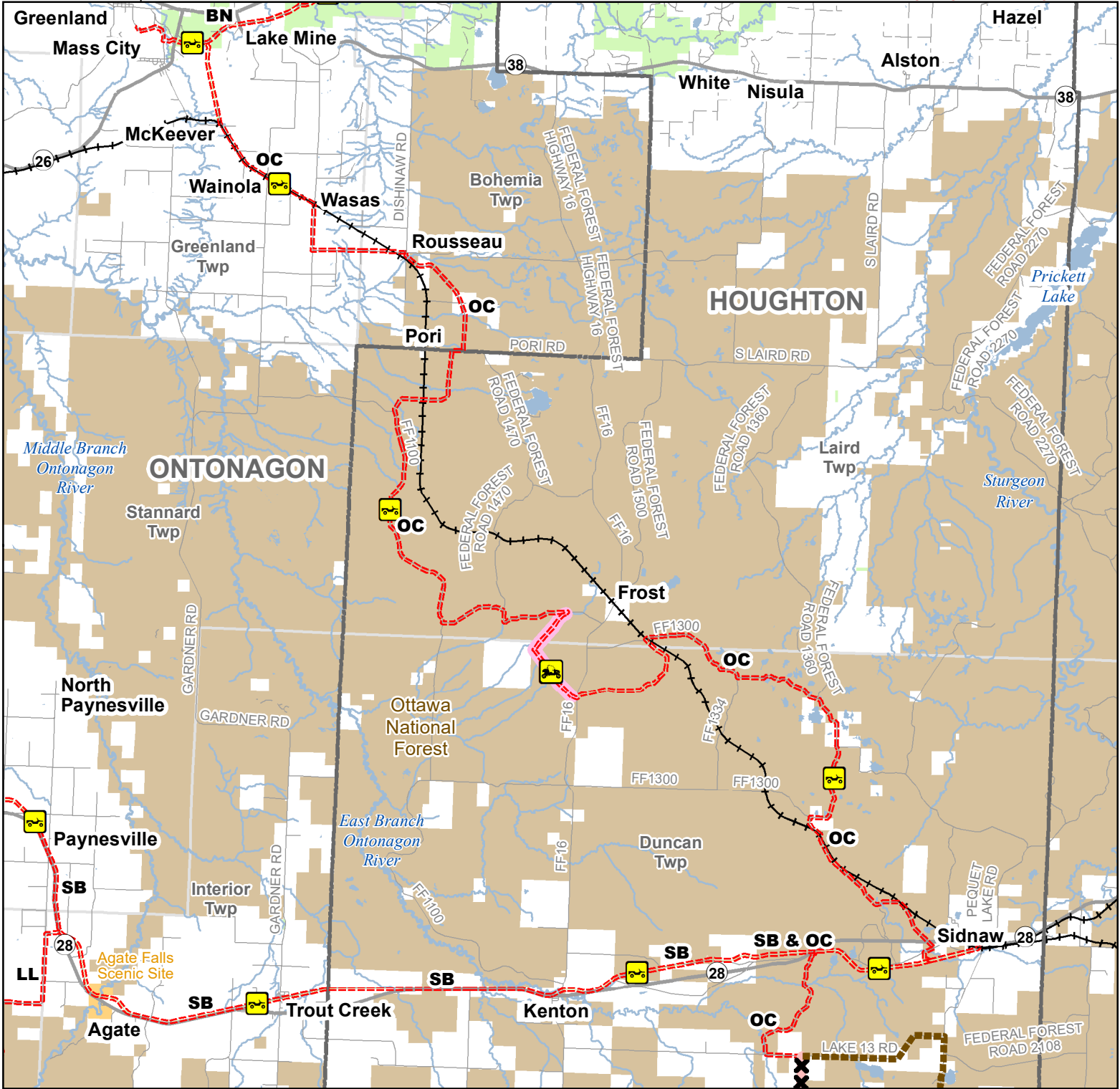


OC Route North -- Lake Mine, Wainola, Rousseau, Sidnaw

Ontonagon & Houghton Counties, Michigan

Description: 79 Miles

ADVISORY: Trails and Routes have two-way traffic.
DISCLAIMER: Trails shown on this map are an approximate representation of the trail system at the time of publication and may not reflect current ground conditions. STAY ON SIGNED TRAILS ONLY!



- 65" Restricted ORV Route
- ORV Routes
- Temporarily closed
- Temporarily open reroute

Restricted ORV Route - ORV's Less than 65" in width including off-road motorcycles only between the dates of May 16th and March 14th. ORV license and trail permit required.

ORV Route - ORVs of all sizes including off-road motorcycles. ORV license and trail permit required unless licensed by the Secretary of State.

- Highway
- Paved Road
- Gravel or Dirt Road
- Railroad
- Lake and River

- State Park Boundary
- State Forest Land
- Federal Land
- Township
- County

0 0.5 1 Miles

Updated: 6/18/2021

N

Michigan.gov/ORVInfo