

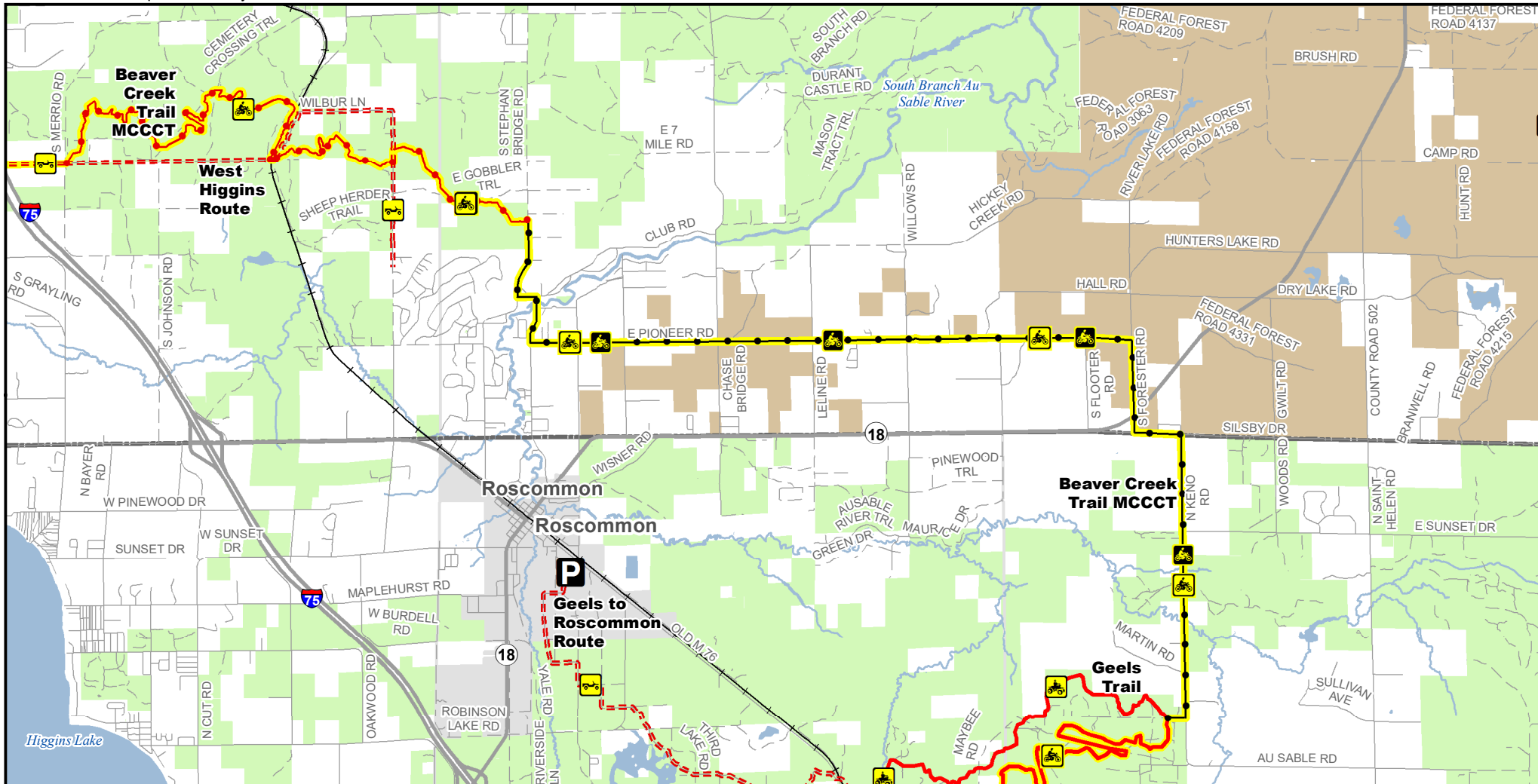


# Beaver Creek Trail MCCCT East

## Crawford and Roscommon Counties, Michigan

Description: Motorcycle trail 30 miles.

**ADVISORY:** Trails and Routes have two-way traffic.  
**DISCLAIMER:** Trails shown on this map are an approximate representation of the trail system at the time of publication and may not reflect current ground conditions.  
**STAY ON SIGNED TRAILS ONLY!**



Parking lot



Motorcycle trail (SOS license)



Motorcycle trail (DNR license)



MCCCT Trails



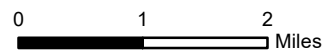
ORV trail



ORV route

- - - ORV Route – ORVs of all sizes including off-road motorcycles. ORV license and trail permit required unless licensed by the Secretary of State.
- ORV Trail – ORVs 50 inches in width or less including off-road motorcycles. ORV license and trail permit required.
- Motorcycle Trail - Secretary of State license required.
- Motorcycle Trail – Motorcycles Only. ORV license and trail permit required.
- Michigan Cross Country Cycle Trail (MCCCT)

- Highway
- Paved Road
- - - Gravel or Dirt Road
- Lakes and rivers
- State forest land
- Federal land
- Township
- County boundary



Michigan.gov/ORVInfo