

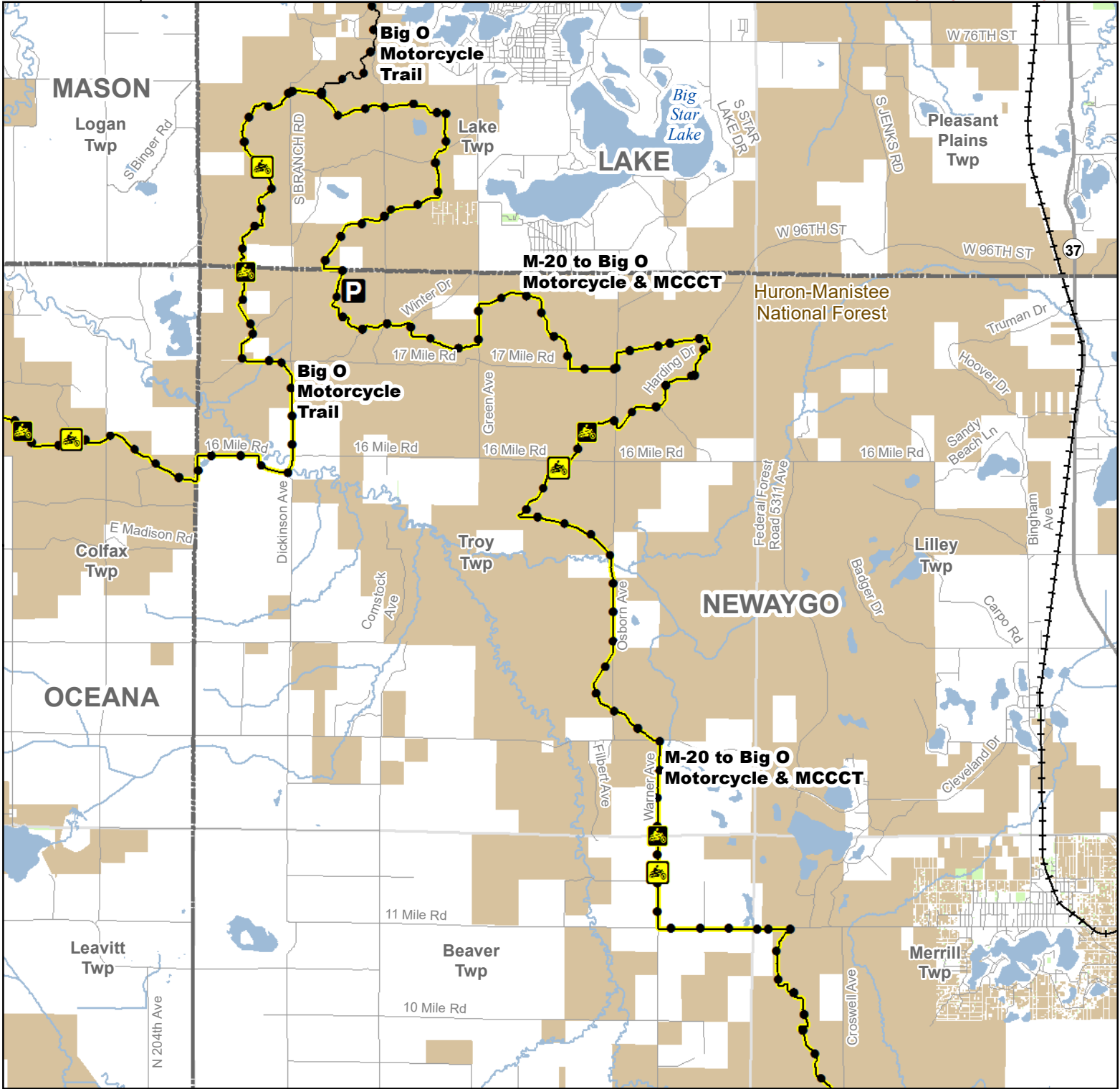


# M-20 to Big O Motorcycle MCCCT North

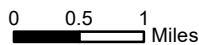
## Lake & Newaygo Counties, Michigan

Description: 28 Miles

**ADVISORY:** Trails and Routes have two-way traffic.  
**DISCLAIMER:** Trails shown on this map are an approximate representation of the trail system at the time of publication and may not reflect current ground conditions.  
**STAY ON SIGNED TRAILS ONLY!**



- Parking Lot
- Motorcycle Trails (SOS License)
- MCCCT Trails
- Motorcycle Trail - Secretary of State license required.
- Michigan Cross Country Cycle Trail (MCCCT)
- Highway
- Paved Road
- Gravel or Dirt Road
- Railroad
- Lake and River
- State Forest Land
- Federal Land
- Township
- County



Michigan.gov/ORVInfo