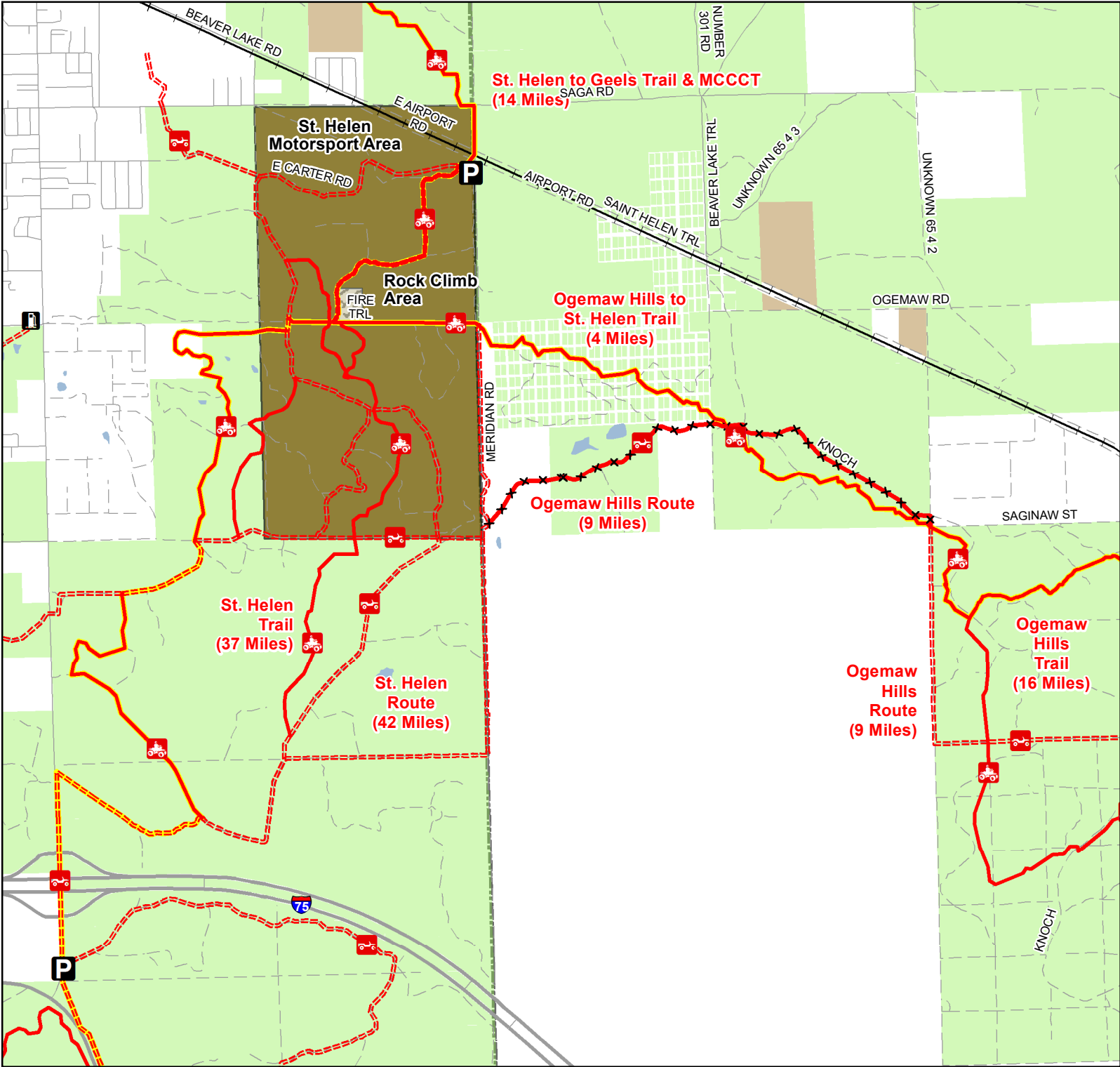




Ogemaw Hills to St. Helen Trail

Ogemaw & Roscommon Counties, Michigan

ADVISORY: Trails and Routes have two-way traffic.
 DISCLAIMER: Trails shown on this map are an approximate representation of the trail system at the time of publication and may not reflect current ground conditions.
STAY ON SIGNED TRAILS ONLY!



- P** Parking Lot
- G** Gas Station
- ORV Route
- ORV Trail
- ORV Route Closed
- ORV Route – ORVs of all sizes including off-road motorcycles. ORV license and trail permit required unless licensed by the Secretary of State.
- ORV Trail – ORVs 50 inches in width or less including off-road motorcycles. ORV license and trail permit required.
- Michigan Cross Country Cycle Trail (MCCCT)
- Highway
- Paved Road
- Gravel or Dirt Road
- Railroad
- Lake and River
- Rock Climb Area
- Scramble Area
- State Forest Land
- Federal Land
- County



Michigan.gov/ORVInfo
 DNR Open Data Portal
gis-midnr.opendata.arcgis.com

