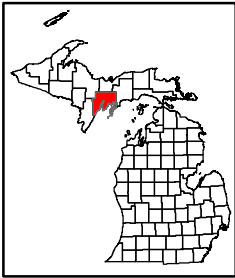


# Michigan Department of Natural Resources Designated Snowmobile Trails

Delta County  
December 18, 2019



0 1 2 Miles

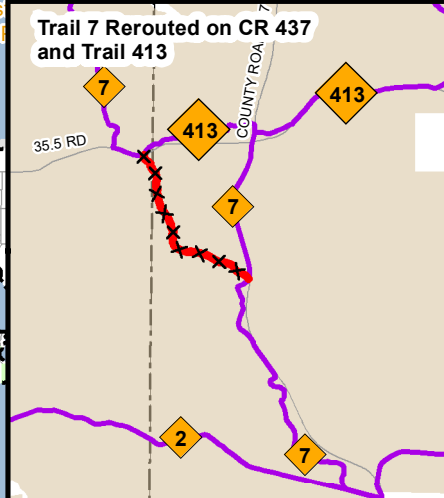
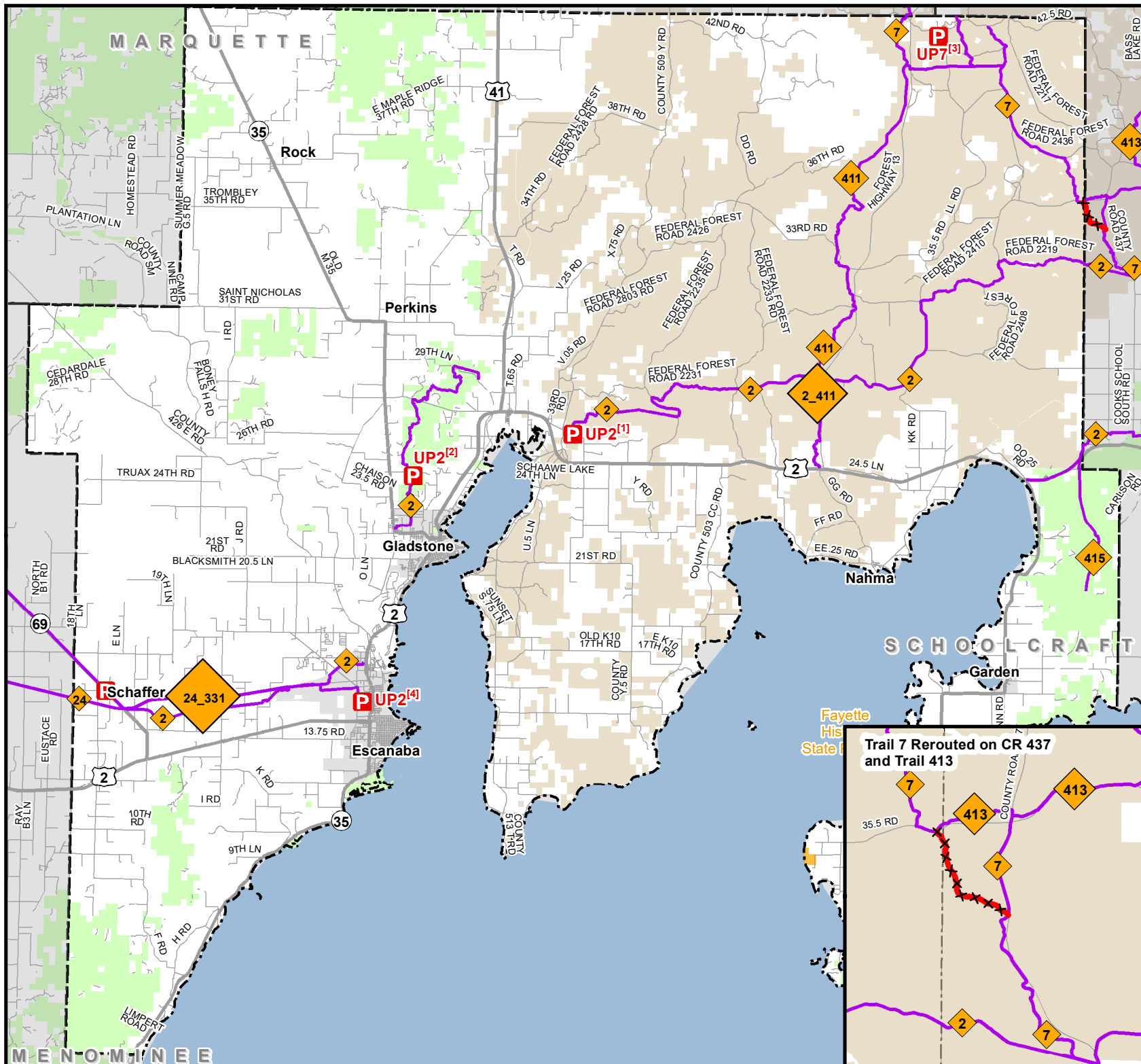
- Parking Lot
- State Forest Campground
- Closed Snowmobile Trail
- Designated Snowmobile Trails
- Highway
- Paved Road
- Gravel or Dirt Road
- State Park Boundary
- State Forest Land
- Federal Land
- City or Village
- County Boundary Outline

**UP2<sup>[1]</sup>** Northside of 26.6 Rd and SE of Int with 33rd Rd

**UP2<sup>[2]</sup>** Southside of Days River 24.5 Rd, East of M-35

**UP7<sup>[3]</sup>** Eastside of LL Rd and South of Int with 42.5 Rd

**UP2<sup>[4]</sup>** UP2 Delta County Fairgrounds Parking; Northside of 9th Ave



**RIDE RIGHT**  
Michigan.gov/snowmobiling