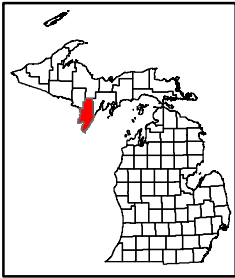


Michigan Department of Natural Resources Designated Snowmobile Trails

Menominee County
Updated: 10/23/2020



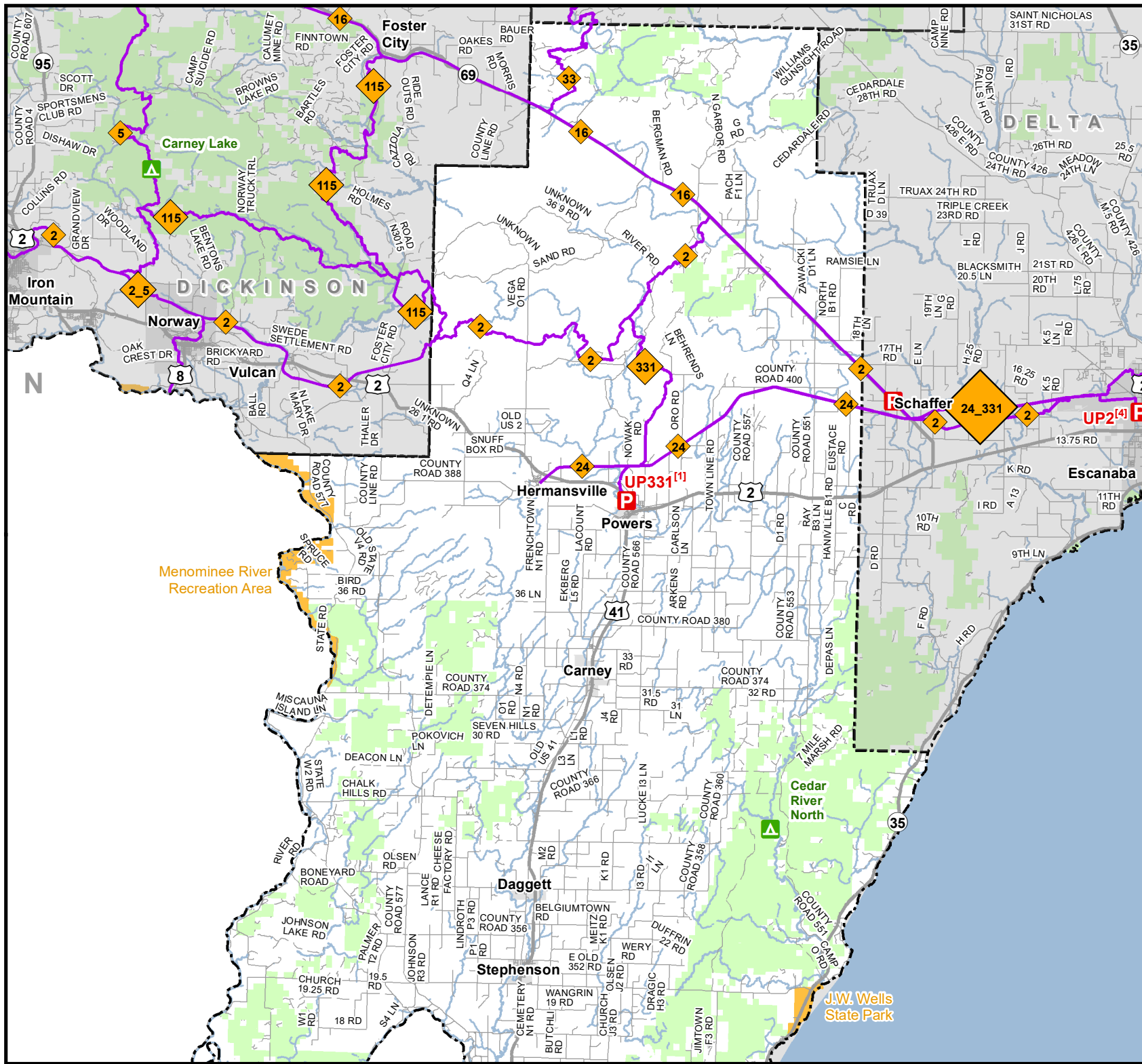
0 1 2 Miles

- Parking Lot
- State Forest Campground
- Designated Snowmobile Trails
- Highway
- Paved Road
- Gravel or Dirt Road
- State Park Boundary
- State Forest Land
- City or Village
- County Boundary Outline

UP331^[1] NW of Int of River Rd and US 2



Michigan.gov/Snowmobiling



J.W. Wells State Park