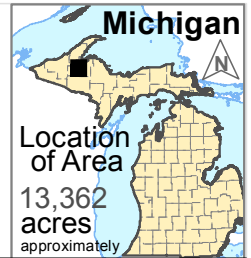


STATE OF MICHIGAN - DEPARTMENT OF NATURAL RESOURCES  
**BARAGA PLAINS STATE WATERFOWL  
(WILDLIFE) MANAGEMENT AREA**

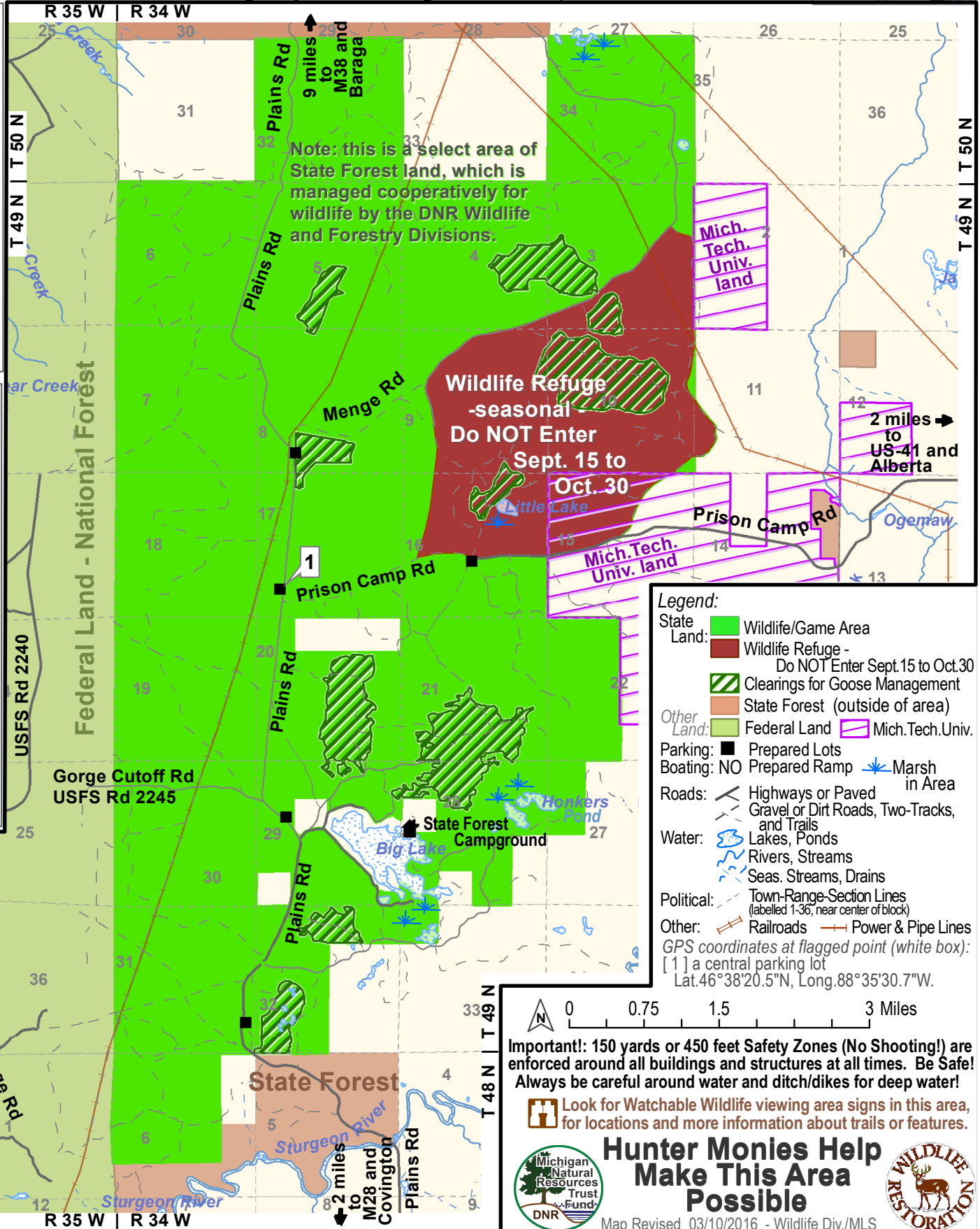
- General Map -  
**Baraga County**

Area headquarters: Wildlife Office in the Baraga DNR Service Center  
427 North Highway US-41, Baraga, MI 49908 ; phone 906- 353-6651



For more information on this or other areas, contact DNR offices, visit the DNR online at [www.michigan.gov/dnr](http://www.michigan.gov/dnr) or scan this QR-block.

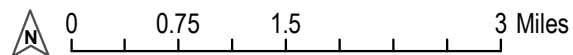
**MI-HUNT**  
Try MI-HUNT, the DNR's online interactive mapping tool that helps you plan your hunting, trapping, or outdoor recreation adventures! [www.michigan.gov/mihunt](http://www.michigan.gov/mihunt)



**Legend:**

- State Land:
  - Wildlife/Game Area
  - Wildlife Refuge - Do NOT Enter Sept.15 to Oct.30
  - Clearings for Goose Management
  - State Forest (outside of area)
- Other Land:
  - Federal Land
  - Mich. Tech. Univ.
- Parking:
  - Prepared Lots
  - Boating: NO
  - Prepared Ramp
  - Marsh in Area
- Roads:
  - Highways or Paved
  - Gravel or Dirt Roads, Two-Tracks, and Trails
- Water:
  - Lakes, Ponds
  - Rivers, Streams
  - Seas. Streams, Drains
- Political:
  - Town-Range-Section Lines (labelled 1-36, near center of block)
- Other:
  - Railroads
  - Power & Pipe Lines

GPS coordinates at flagged point (white box):  
[ 1 ] a central parking lot  
Lat.46°38'20.5"N, Long.88°35'30.7"W.



**Important!: 150 yards or 450 feet Safety Zones (No Shooting!) are enforced around all buildings and structures at all times. Be Safe! Always be careful around water and ditch/dikes for deep water!**

Look for Watchable Wildlife viewing area signs in this area, for locations and more information about trails or features.



**Hunter Monies Help  
Make This Area  
Possible**

