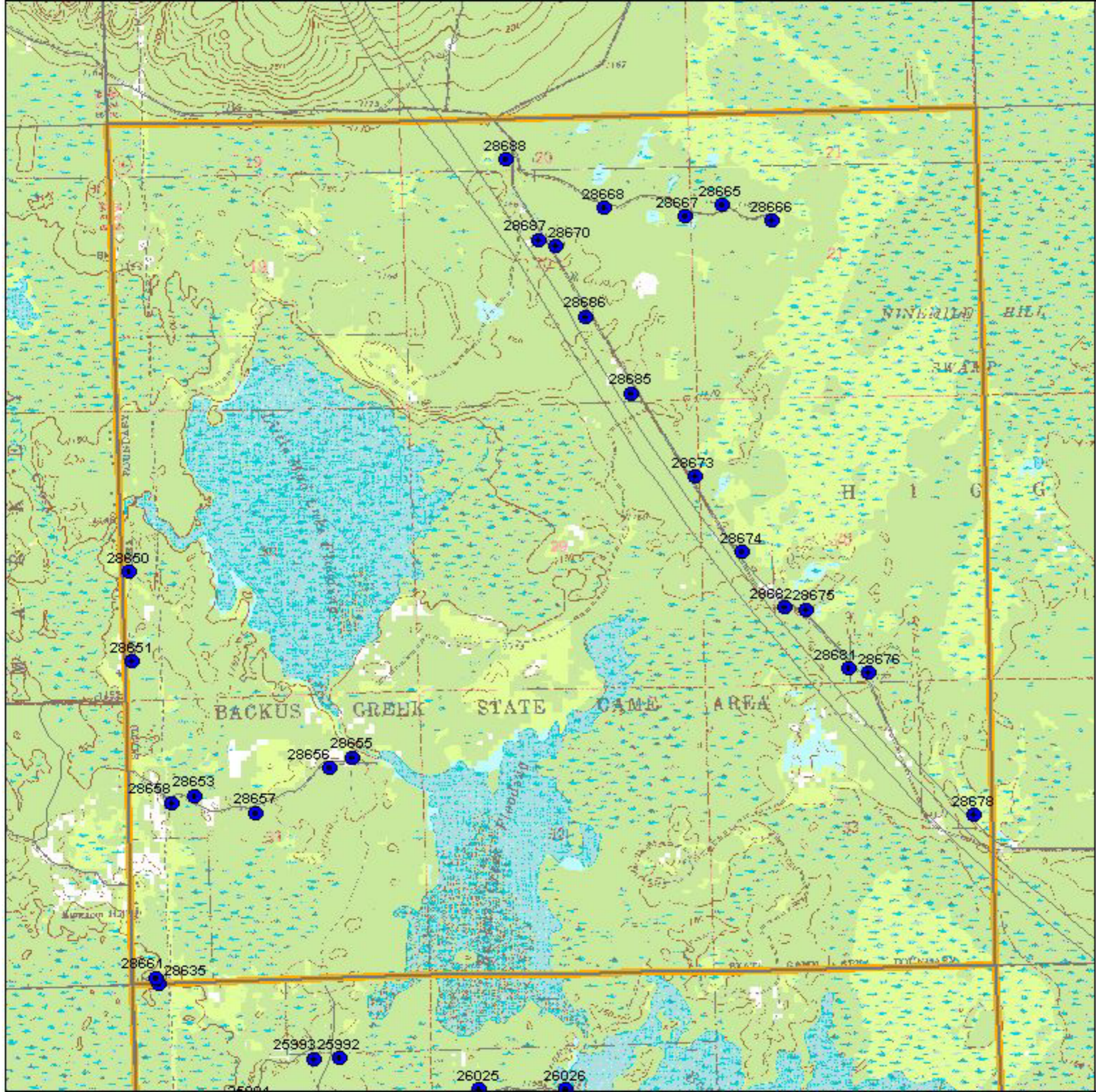


Roscommon County T23N R02W Higgins Township Block 3

LEGEND

-  BBA Point Sampling Locations (each numbered)
-  Priority Block (1/4 twp)
-  Other Blocks
- USGS Topographic Information:
 -  Major and County Roads
 -  Trails and Two-tracks
 -  Topographic Lnes
- Landuse / Landcover Backdrop
 -  City Blocks
 -  Open Land, Residential, etc. incl. agriculture lands
 -  Mixed/ Deciduous / Evergreen Forest
 -  Woody Wetlands, Emergent / Herbaceous Wetlands
 -  Open Water



(rev. 2005 may 18)